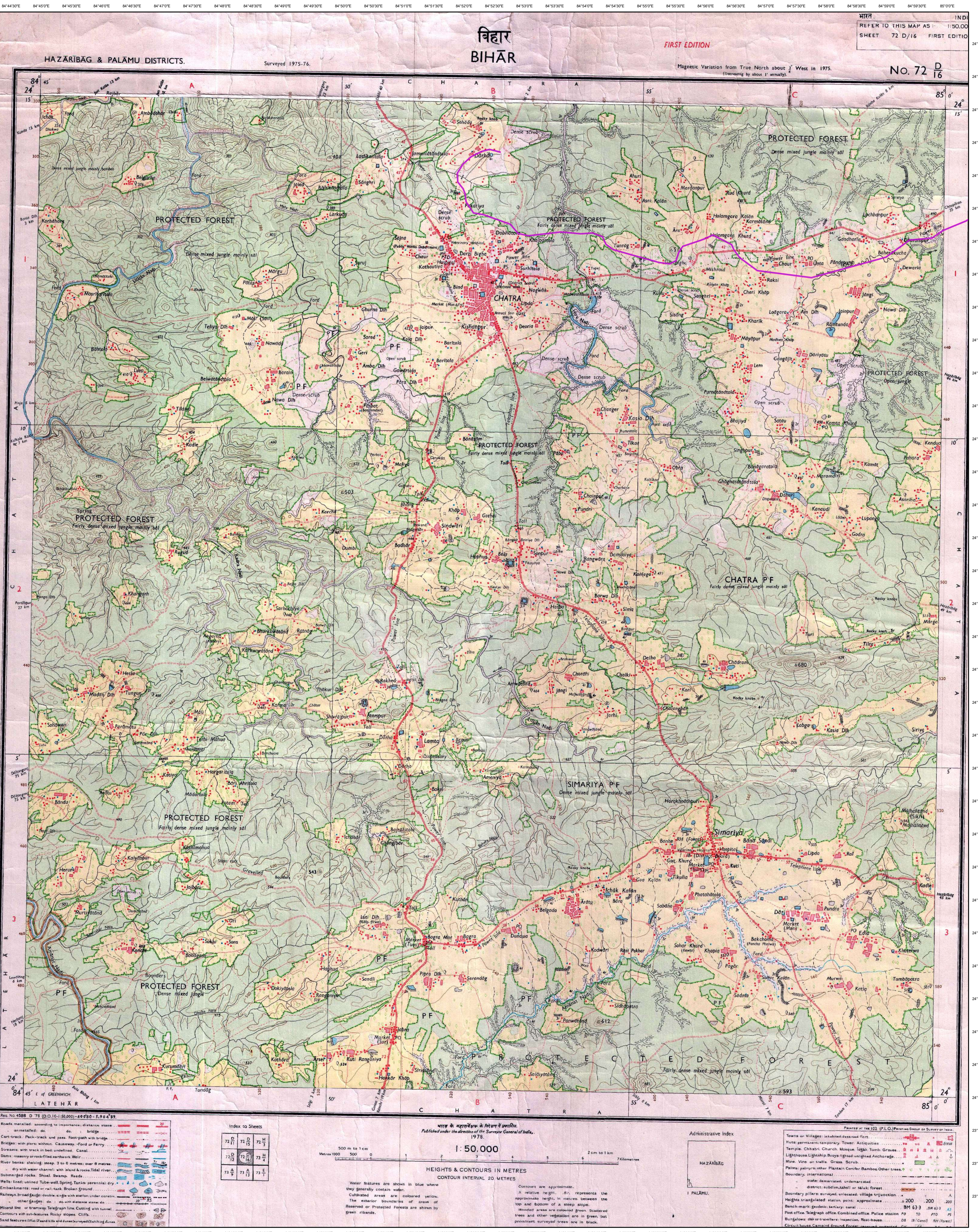


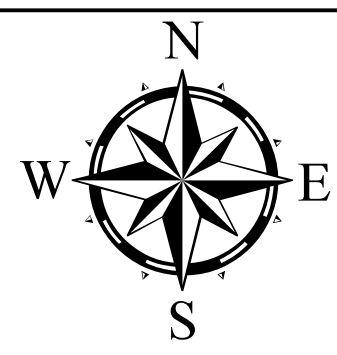
132 KV D/C ITKHORI TO CHATRA TRANSMISSION LINE

1:50,000



Legend

- TRANSMISSION_LINE
- ROW_132KV_ITKHORI_TO_CHATRA



1:50,000



OPEN SERIES MAP

No. G45T4

Scale 1:50,000

G45S15 (72D/15)	G45T3 (72H/3)	G45T7 (72H/7)
G45S16 (72D/16)	G45T4 (72H/4)	G45T8 (72H/8)
F45A13 (73A/13)	F45B1 (73E/1)	F45B5 (73E/5)

भारतीय सर्वेक्षण विभाग SURVEY OF INDIA

1st Edition 2009.

Price : Rs. 50 / -

CONVENTIONAL SYMBOLS

Express Highway: with toll; with bridge; with distance above		20
Roads, metalled: according to importance		
Roads, double cartway: according to importance		
Unmetalled road: Cart-track; Pack-track with pass; Foot-path		
Streams: with track in bed; unfilled; Canal		
Dams: masonry or rock-filled; earthwork; Weir		
River: dry with water channel; with island & rocks; Tidal river		
Submerged rocks; Shoal; Swamp; Reeds		
Wells: lined; unlined; Tube-well; Spring; Tanks: perennial; dry		
Embankments: road or rail; sink; Broken ground		
Railways: broad gauge; double; single with station; under constr.		
Railways: other gauge; double; single with distance above; do		
Mineral: fire or tramway; Kin. Cutting with tunnel		
Contours with sub-features: Rocky slopes; Cliffs		
Sand features: Riffle; (Shoal-ridges) spurs; Chikara; (shoal)		
Towns or Villages: inhabited; reserved; Fort		
Hills: permanent; temporary; Topped; Antiquities		
Temples; Chhatra; Church; Mosque; Jagan; Tomb; Graves		
Lighthouses; Lightships; Buoys; lighted; unlighted; Anchorage		
Mine: Vind on hillside; Goss; Struck		
Palms; palm-tree; other; Parasol; Conifer; Bamboo; Other trees		
Areas: cultivated; wooded; Surveyed tree		
Boundary: international		
state; demarcated; undemarcated		
district; subdivision; taluk or taluk; forest		
Boundary pillars: surveyed; uncoloured		
Height: triangulation station; police; approximate		
Bench-mark: geodetic; tertiary; canal		
Post office; Telegraph office; Overhead tank		
Rest house or inspection bungalow; Circuit house; Police station		
Camping ground; Forest: reserved; protected		
Speed names: administrative; locality or tribal		
Hospital; Dispensary; Veterinary; Hospital / Dispensary		
Aerodrome; Helipad; Tourist site		
Power line: with poles surveyed; with poles unsurveyed		

REFERENCE

NH 100 National Highway No. 100.

NOTES

Heights are in metres and above Indian mean sea level.
Contours are approximate.
A relative height, *h*, represents the approximate height in metres, between the top and bottom of a steep slope.
Tanks shown dry, in this area usually contain water from July to February.
Wells are numerous throughout the sheet; only the important ones have been shown.
The exterior boundaries of areas of Reserved or Protected Forests are shown by green ribands.
The kilometre scale numbers along roads are shown in sans type, e.g., '5' whereas milestone numbers are shown in upright type, e.g., '5'.
The district boundary between Chhota and Hazaribagh Districts has been surveyed as pointed out by the local officials on the ground but has not been verified by the District authorities.

COMPILATION INDEX

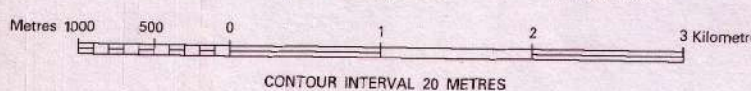
A. Surveyed during 1977-78. Updated for major details during 2004-05.



Projection - UTM Datum - WGS 84

Magnetic Variation from True North about 1/4° West in 2005.
(Decreasing by about 1' annually).

1:50,000



CONTOUR INTERVAL 20 METRES

For further details about this map, please contact

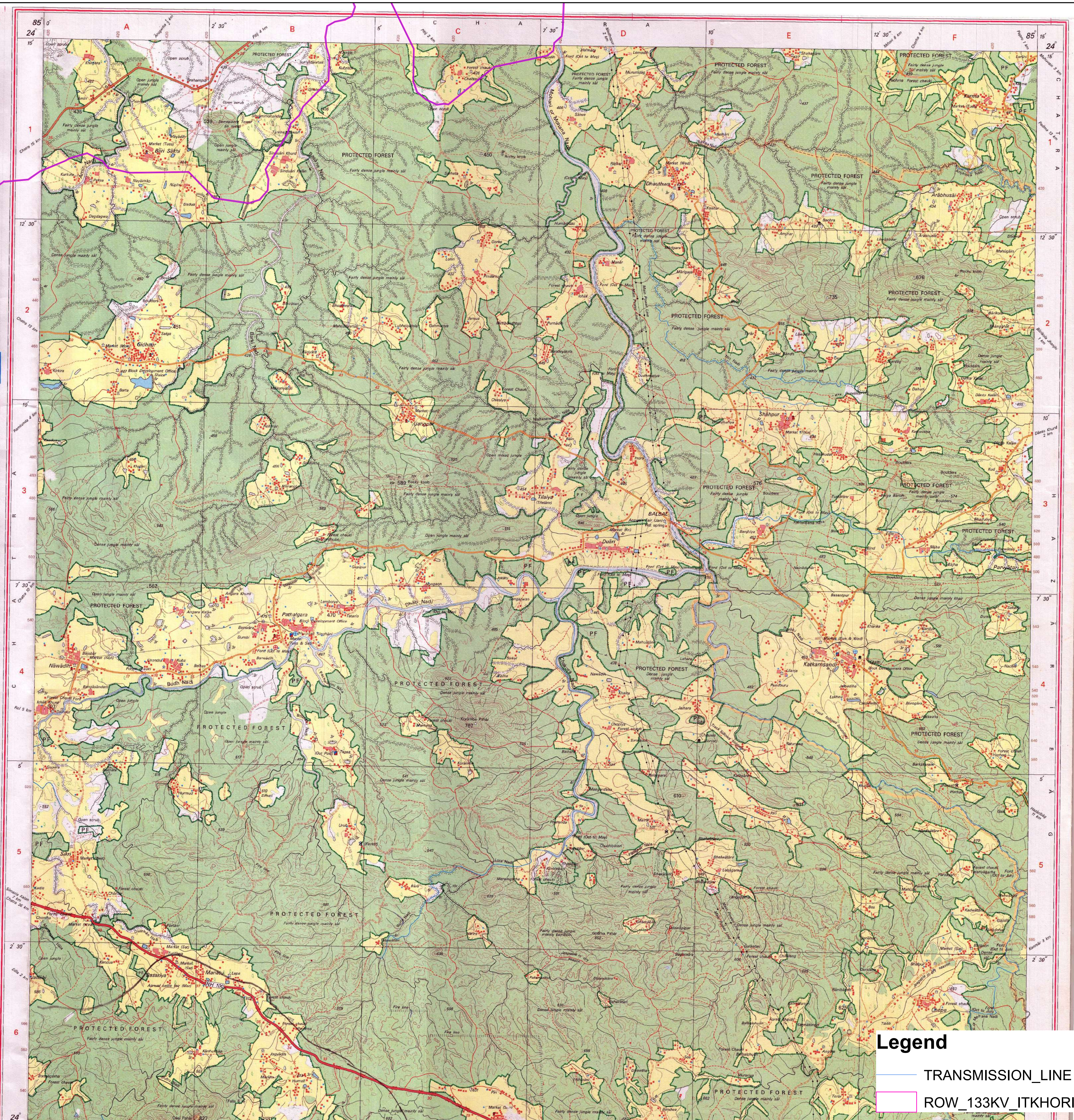
Director

Jharkhand Geo-Spatial Data Centre

Survey of India, Doranda

Ranchi-834002

Fax : 0651 - 2482789



Legend

TRANSMISSION_LINE

ROW_133KV_ITKHORI_TO_CHATRA

Gaya BIHAR G45S14 (72D/14)	G45T2 (72H/2)	Nawāda BIHAR G45T6 (72H/6)
G45S15 (72D/15)	G45T3 (72H/3)	Kodama JHARKHAND G45T7 (72H/7)
Chatra JHARKHAND G45S16 (72D/16)	G45T4 (72H/4)	Hazribāg JHARKHAND G45T8 (72H/8)

132 KV D/C ITKHORI TO CHATRA TRANSMISSION LINE

भारतीय सर्वेक्षण विभाग SURVEY OF INDIA

1st Edition 2010. Revised 2010-11-94. Price : Rs. 70/-

CONVENTIONAL SYMBOLS

Express Highway: with toll, with bridge, with distance stone	
Roads: metalled, according to importance	
Unmetalled road, Cart-track, Pack-track with pass, Foot-path	
Stream with track in bed, undrained, Canal	
Dam; masonry or rock-filled; earthwork, Weir	
River: dry with water channel, with island & rocks, Tidal river, Submerged rocks, Shoal, Swamp, Reeds	
Wells: lined, unlined, Tube-well, Spring, Tanks: perennial, dry	
Embankment, road or rail, tank, Broken ground	
Railways, broad gauge: double, single with station, under constr.	
Mineral line of Railway, Kits, Cutting with tunnel	
Contours with sub-features, Rocky slopes, Cliffs	
Sand features: (1) (2) (and) (intermittent) (3) (Dunes) (shifting)	
Towns or Villages: Infirmary, deserted, Fort	
Huts, permanent, temporary, Tower, Antiquities	
Temples, Chhatra, Church, Mosque, Ghat, Tomb, Graves	
Lighthouse, Lightship, Buoy: lighted, unlighted, Anchorage	
Mine: Vein on hillside, Grass, Bone, Other trees	
Palms: cultivated, other, Plantain, Coconut, Bamboo, Other trees	
Asses: cultivated, wooded, Surveyed tree	
Boundary: International	
state: demarcated, undemarcated	
district: subdivided, label or label, forest	
Boundary pillars: surveyed, unvisited	
Height: triangulated, station, point, approximate	
Bench-mark: geodetic, tertiary, canal	
Post office, Telegraph office, Overhead tank	
Rest house or inspection bungalow, Circuit house, Police station	
Camping ground, Forest: reserved, protected	
Special names: administrative, locality or tribal	
Hospital, Dispensary, Veterinary: hospital / Dispensary	
Aerodrome, Helipad, Tourist site	
Power line: with pylons surveyed, with poles unsurveyed	

REFERENCE
 NH 2 National Highway No. 2

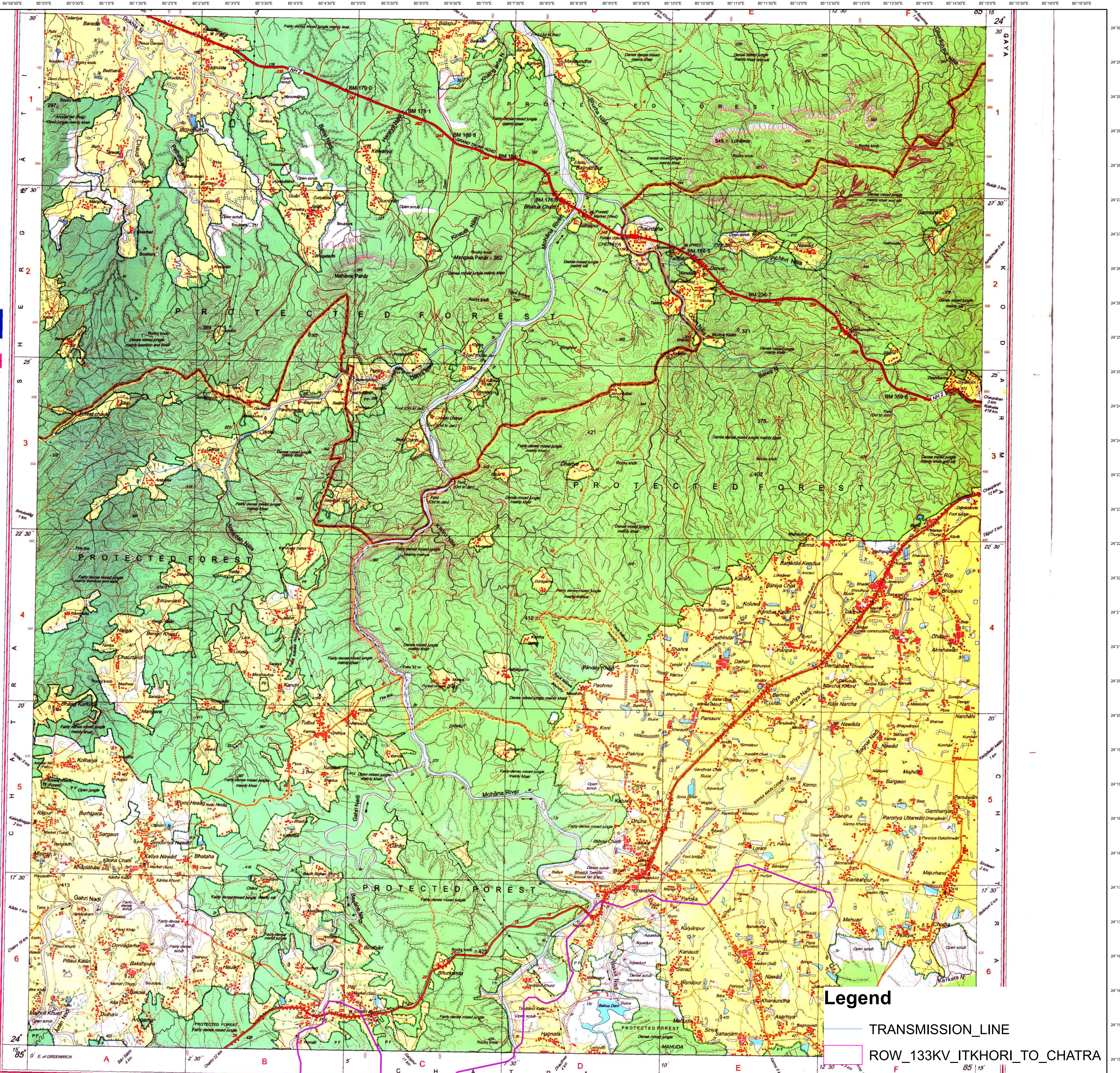
NOTES
 Contours are approximate.
 Heights are in metres and above Indian mean sea level.
 A relative height, *h*, represents the approximate height, in metres between the top and bottom of a steep slope.
 The triangulated heights and contours in this sheet have not been adjusted to the height of the spirit-levelled bench-marks and may not be strictly in accordance with them.
 The kilometre stone numbers along roads are shown in slant type, e.g., '5' whereas milestone numbers are shown in upright type, e.g., '15'.
 Cart-tracks along canals are feasible in dry season. Permission to use these is required from the irrigation authorities.
 Numerous unlined wells exist throughout the cultivated portions of this sheet; only the important ones have been shown.
 Cultivation is periodic and dependent on rainfall.

COMPILATION INDEX
 A. Surveyed during 1977-78. Updated for major details during 2005-06.

Projection - UTM Datum - WGS 84
 Magnetic Variation from True North about 1° West in 2005.
 (Decreasing by about 1" annually).
 1:50,000
 500 m to 1 cm
 2 cm to 1 km
 3 Kilometres
 CONTOUR INTERVAL 20 METRES

For further details about the map, please contact:
 Director
 Bihar Geo-Spatial Data Centre
 Survey of India, 164, Sheikhpura House, Sheikhpura
 Patna - 800014.
 Fax : 0612 - 2280285

WEBSITE - www.surveyofindia.gov.in
 Reproduction in whole or part by any means is prohibited



Legend

- TRANSMISSION LINE
- ROW_133KV_ITKHORI_TO_CHATRA