



Reg. No 5447 HD 75 (D.O. 7 1 33 333)-968'70-7100'85

Roads, metalled: importance: distance: station: 20
 Unmetalled: do. bridge:
 Cart-track, pack-track and pass: Foot-path with bridge:
 bridge: with pier: without. Causeway: Road or Ferry:
 River, with track and boat: land-rail: Canal:
 Water-course: road: and boat:
 River banks: sloping: steep. 3 to 6 metres. over 6 metres:
 dry with water-channel: with stone & Reeds Tidal river:
 Submerged rocks: Shoal. Swamp: Reeds:
 Wells: lined: unlined. Tube wells: Spring: Tanks: perennial: dry:
 Embankment: road: rail: tank: Broken ground:
 Phallus: broad: narrow: ridge: with drainage:
 other: gullies: do. with cutting: stone:
 Mineral line: Railway: Telegraph line: Distance with fount:
 Contours with sub-levels: Rocks: Steeps: Cliffs:
 Sand Barren: Unshaded hills: Double-storied: Shading: dunes:

1st Edition 1975.
(Previous Editions on 1-inch scale: 1st 1910 - 2nd 1942).

REFER TO THIS MAP AS : 1:50,000
SHEET 64 A/9 FIRST EDITION

INDIA

Published under the direction of Dr. Hari Narain, M.Sc., D. Phil, Ph. D., Surveyor General of India.
1975.

1:50.000

HEIGHTS & CONTOURS IN METRES
CONTOUR INTERVAL: 20 METRES

*Water features are shown in blue where they generally contain water.
 †Cultivated areas are coloured yellow.
 ‡The exterior boundaries of areas of Reserved or Protected forests are shown by green ribbons.

* Not available

Administrative Index

51

[illegible]

© GOVERNMENT OF INDIA COPYRIGHT 1975.
Price Five Rupees.

Price Twenty Rupees

मध्य प्रदेश
MADHYA PRADESH

FIRST EDITION

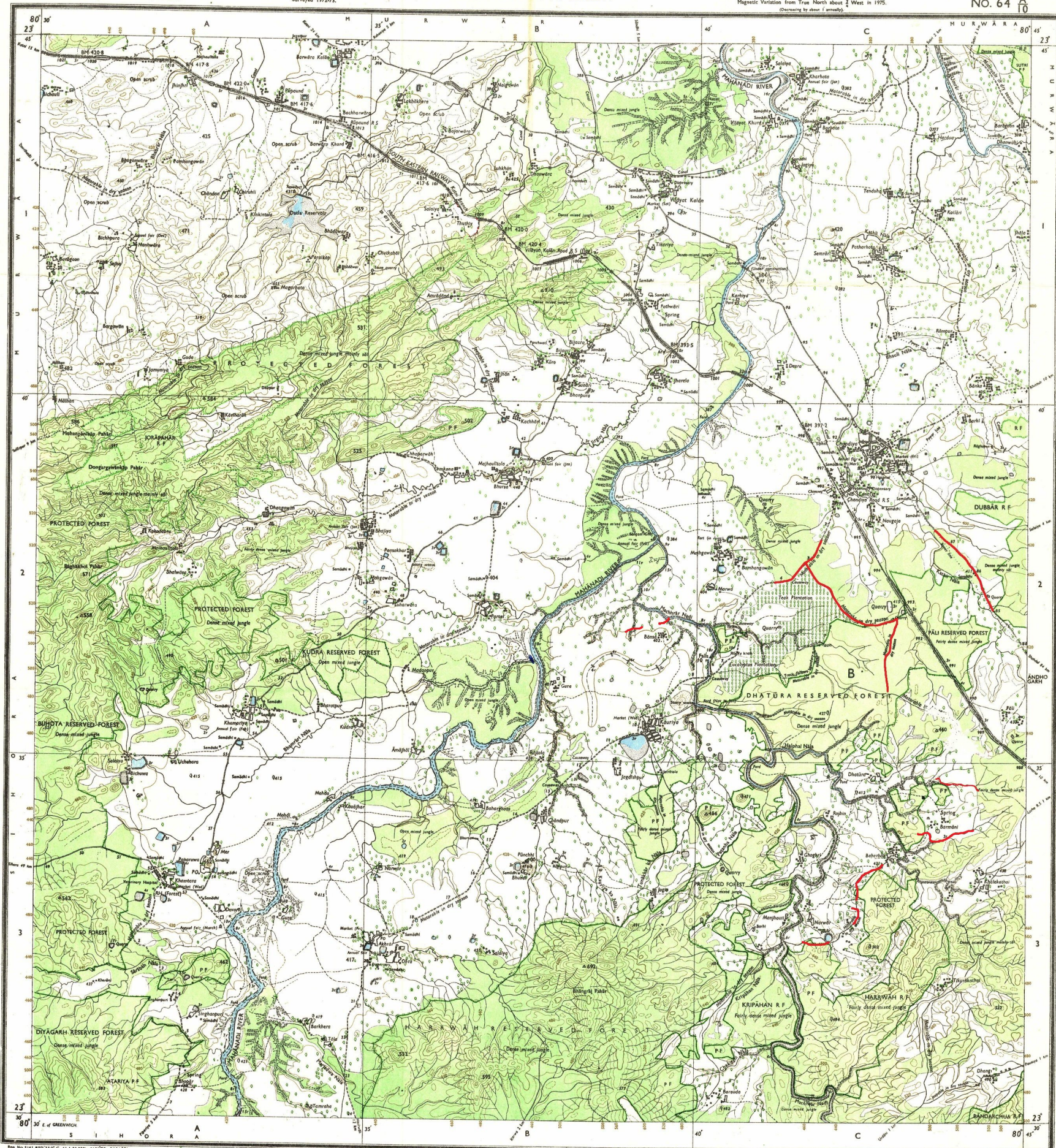
INDIA
REFER TO THIS MAP AS:-
SHEET 64 A/10 FIRST EDITION

JABALPUR & SHAHDOL DISTRICTS.

Surveyed 1972-73.

Magnetic Variation from True North about 4° West in 1975.
(Decreasing by about 1° annually)

No. 64 A



Ref. No. 5181 PZD 77 (C.C. 61-13133)-206 VB-8003/91.

- Roads: metalled, according to importance; distance scale:
unmetalled, do.
Cable track, Pack-track and pass. Foot-path with bridge.
Bridges: with pier without. Causeway. Ford or Ferry.
Streams: with track in bed-unforded. Canal.
Dams: masonry or rock-filled earthwork. Weir.
River banks: shaling, steep, 3 to 6 metres, over 6 metres.
Dry with water channel, with island & rock. Tidal river.
Shoal/merged rocks. Shoal. Swamp. Bungle.
Wells: hand, unlined, tube-well, Spring, Tanks, perennial, dry.
Embankments: and or rail tank. Broken ground.
Railways: broad gauge double single with station, under construction.
other gauges: do. do. with station, stone, do.
Mineral line or tramway. Telegraph line. Cutting with tunnel.
Contours with sub-features. Rocky slopes. Cliffs.
Sand features: dunes, dunes with vegetation, dunes with forest.

Index to Sheets

64 A	64 B	64 C
64 D	64 E	64 F
64 G	64 H	64 I

500 m to 1 cm
1:50,000
2 cm to 1 km
Kilometres

HEIGHTS & CONTOURS IN METRES
CONTOUR INTERVAL 20 METRES

*Water features are shown in blue where they generally contain water.
*Coloured areas are coloured yellow.
The interior boundaries of areas of Reserved or Protected Forests are shown by green ribbons.
Colours are approximate.
A relative height, e.g., 30, represents the approximate height, in metres, between the top and bottom of a steep slope.
Wooded areas are coloured green. Scattered trees and other vegetation are in green, but prominent surveyed trees are in black.
*Not applicable

The spot heights and contours in this sheet have not been adjusted to the height of the spirit-levelled bench-marks and may not be strictly in accordance with them.
A relative height, e.g., 30, marked along a road, indicates the height of the top of the road embankment above the adjacent country.
Forest boundaries have been surveyed and pointed out by the local officials on the ground, but have not been verified by the forest authorities concerned.
The district boundary between Jabalpur and Shahdol Districts has been surveyed and pointed out by the local officials on the ground but has not been verified by the Collector of Shahdol District.

Administrative Index



- Temples or Villages: inhabited, deserted.
Hills: permanent, temporary. Tower. Antiquities.
Temple. Chhatra. Church. Mosque. Jagga. Tomb. Grave.
Lighthouse. Lightship. Buoy. Signal. Unsignal. Anchor.
Mine. Vind. on. vial. Grass. Scrub.
Palms: palmyra, other. Plantain. Coffee. Bamboo. Other trees.
Boundary: international.
State: as marked, undemarcated.
District: subdivision, taluk or taluka, forest.
Boundary pillars: surveyed, unlocated. Village: triangulation.
Pillars: triangulated, station, pylon, approximate.
Bench-mark: Indian, survey, approximate.
Post office. Telegraph office. Combined office. Police station.
Bungalows: dka or travelling. Inspection. Rest-house.
Circuit house. Camping ground. Forest: reserved, protected.
Spotted names: semi-inscriptive. Locally or tribal.
NAGA

REFER TO THIS MAP AS:-
SHEET 64 A/10 FIRST EDITION

INDIA

GOVERNMENT OF INDIA COPYRIGHT, 1977.
Price Ten Rupees

JABALPUR & SHAHDOL DISTRICTS.

Surveyed 1972-73



Rev. No. 5999 HD'76 (C.C. 61-1333)-6658 76-7104'88.

Published under the direction of Major-General K.L.Khosla, B.Sc., B.E. (Civil), F.I.S., F.I.E., F.I.G.U., MASCE. (U.S.A.), Surveyor-General of India

Sheds metalled: according to importance: distance stone
unmetalled: do; do bridge
Car-track: Pack-track and pass: Foot-path with bridge
Bridges: with piers: without: Causeway: Ford or Ferry
Streams: with track: but not well understood: Can
Sheds: metalled: unmetalled: distance stone
River banks: shewing steep: 3 to 6 metres: over 6 metres
dry with water channel: with island: rocks: Tidal river:
Submerged rocks: Shoal: Swamp: Reeds
Wells: Under: cut: vertical: Tube: Spring: Trench: perennial: dry:
Boulder: on reef: tall: Broken: Ground
Rivers: broad: for: deeper: dry: on: origin:
Other: gorges: do: do: do: distance: more: do
Mined line or tramway: Telegraph line: Cutting: with tunnel:
Contours with sub-features: Rocky: Spikes: Cliffs
Saw: Features: (1) Used line and distance: (2) Shading: dunes

Index to Sheets

$64\frac{A}{9}$	$64\frac{A}{13}$	$64\frac{A}{17}$
$64\frac{A}{10}$	$64\frac{A}{14}$	$64\frac{A}{18}$
$64\frac{A}{11}$	$64\frac{A}{15}$	$64\frac{A}{19}$

1st Edition 1976.
(Previous Edition on 1-inch scale: 1st 1911.)

REFER TO THIS MAP AS :- 1:50,000
SHEET 64 A/14 FIRST EDITION

INDIA

1:50.000

HEIGHTS & CONTOURS IN METRES
CONTOUR INTERVAL 20 METRES

* Cultivated areas are coloured yellow.
The exterior boundaries of areas of Reserved or Protected Forests are shown by green ribbons.

A relative height, Δh , represents the approximate height, in metres, between the top and bottom of a steep slope. Scattered trees and other vegetation are in green, but prominent surveyed trees are in black.

*Not applicable.

The triangulated heights and contours in this sheet have not been adjusted to the heights of the spirit-levelled bench-marks and may not be strictly in accordance with them.

Forest boundaries in this sheet have been surveyed as pointed out by the local forest officials on the ground, but have not yet been verified by the Divisional Forest Officer, Jabalpur Forest Division.

Administrative Index

SHANDOL

[illegible]

© GOVERNMENT OF INDIA COPYRIGHT, 1974