

No. G45U5

Scale 1:50,000

Latitude BISHAR G45O4 (72O4)	G45O8 (72O8)	Longitude BISHAR G45O12 (72O12)
G45U1 (72U1)	G45U5 (72U5) BISHAR	G45U9 (72U9) BISHAR
G45U2 (72U2) JHARSHAND	G45U6 (72U6)	G45U10 (72U10) JHARSHAND

1 Nainiwa, BISHAR
2 Begunia, BISHAR

भारतीय सर्वेक्षण विभाग SURVEY OF INDIA

1st Edition 2010

Price Rs. 70/-

Revised price
Rs. 110/-

CONVENTIONAL SYMBOLS

Express Highway with toll with bridge with distance area	
Express Highway with toll with bridge	
Express Highway with toll	
Express Highway	
Express Highway with bridge	
Express Highway with bridge and toll	
Express Highway with bridge and toll and distance area	
Express Highway with bridge and toll and distance area and distance area	
Express Highway with bridge and toll and distance area and distance area and distance area	
Express Highway with bridge and toll and distance area and distance area and distance area and distance area	
Express Highway with bridge and toll and distance area and distance area and distance area and distance area and distance area	

PROPOSED ROAD - (f) B

Adar
of
Survey
Road
Division,
Jhansi

SYMBOL	A-B
पूर्व के प्रस्तावित पथ लिटि	
विभाग का पथ आरेखण	
पुल निर्माण स्थल	

NOTES

Contours are shown and marked with spot heights in metres, between the top and bottom of a mass when
A contour height in metres
The spot heights and contours in this sheet have not been adjusted to the heights of the earth-surface benchmarks and may not be strictly in accordance with them.
The bearings shown are magnetic bearings and the bearings are shown in degrees, minutes and seconds as shown in example, e.g. 123° 45' 30".

COMPLETION INDEX

A. Surveyed during 1975-79 (updated for major roads during 2005-08)

Projection - UTM Datum - WGS 84

Magnetic Variation from True North about West in 2005.

Corrected for local magnetic variation.

1:50,000

Scale 1:50,000

CONTOUR INTERVAL: 20 METRES

For further details about this map, please contact

Director

State Geospatial Data Centre

Survey of India, 15A, Shastri Park, Shastri Park

Patna-800 014.

Fax: 0612-288255

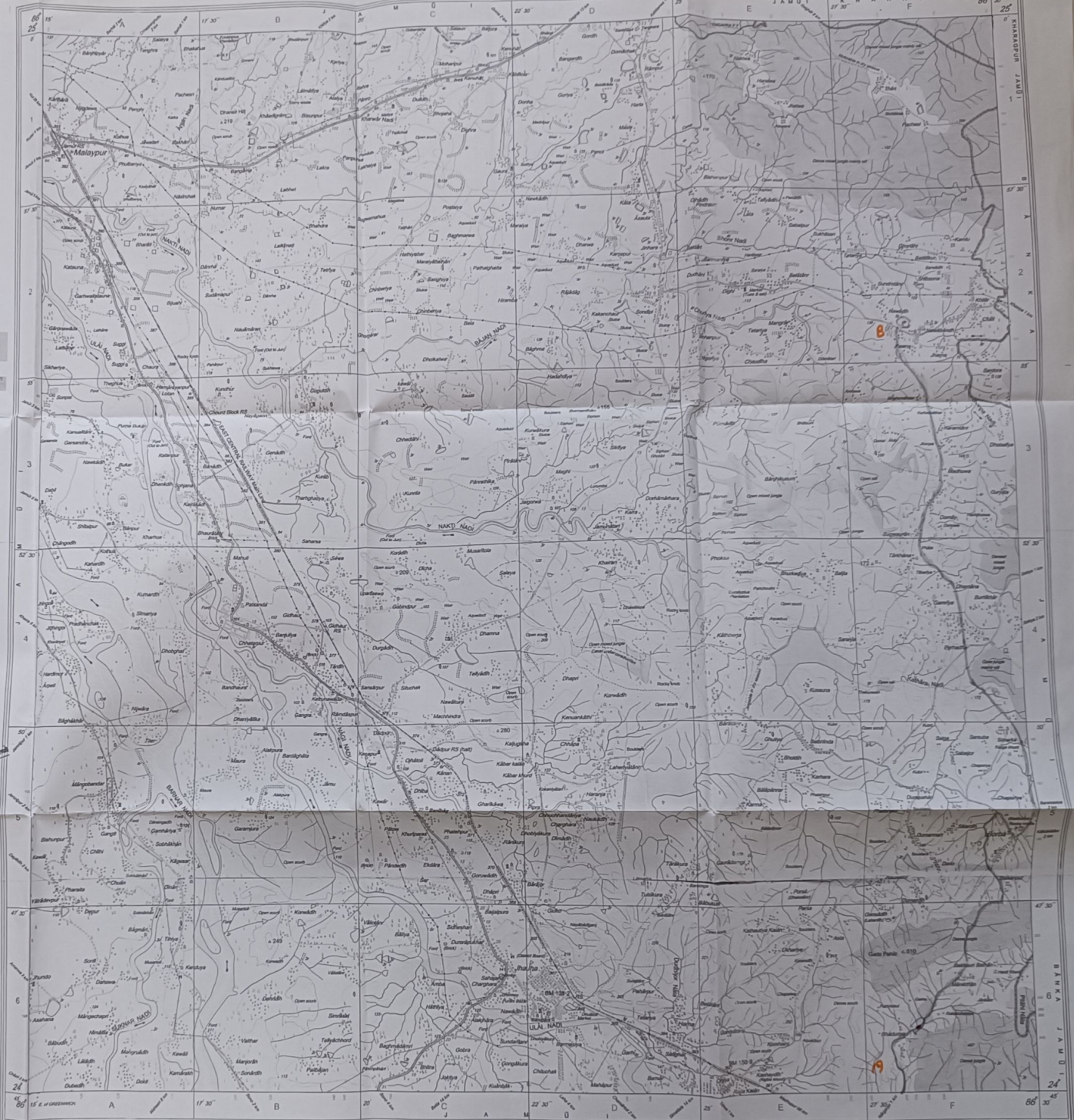
WEBSITE - www.surveyofindia.gov.in

Reproduction in whole or part by any means is prohibited

without the written permission of Survey of India, the

National Mapping Agency.

© GOVERNMENT OF INDIA (COPYRIGHT) 2010



Signature
Deputy Survey General
Jhansi Forest Division
Jhansi-211308