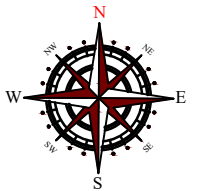
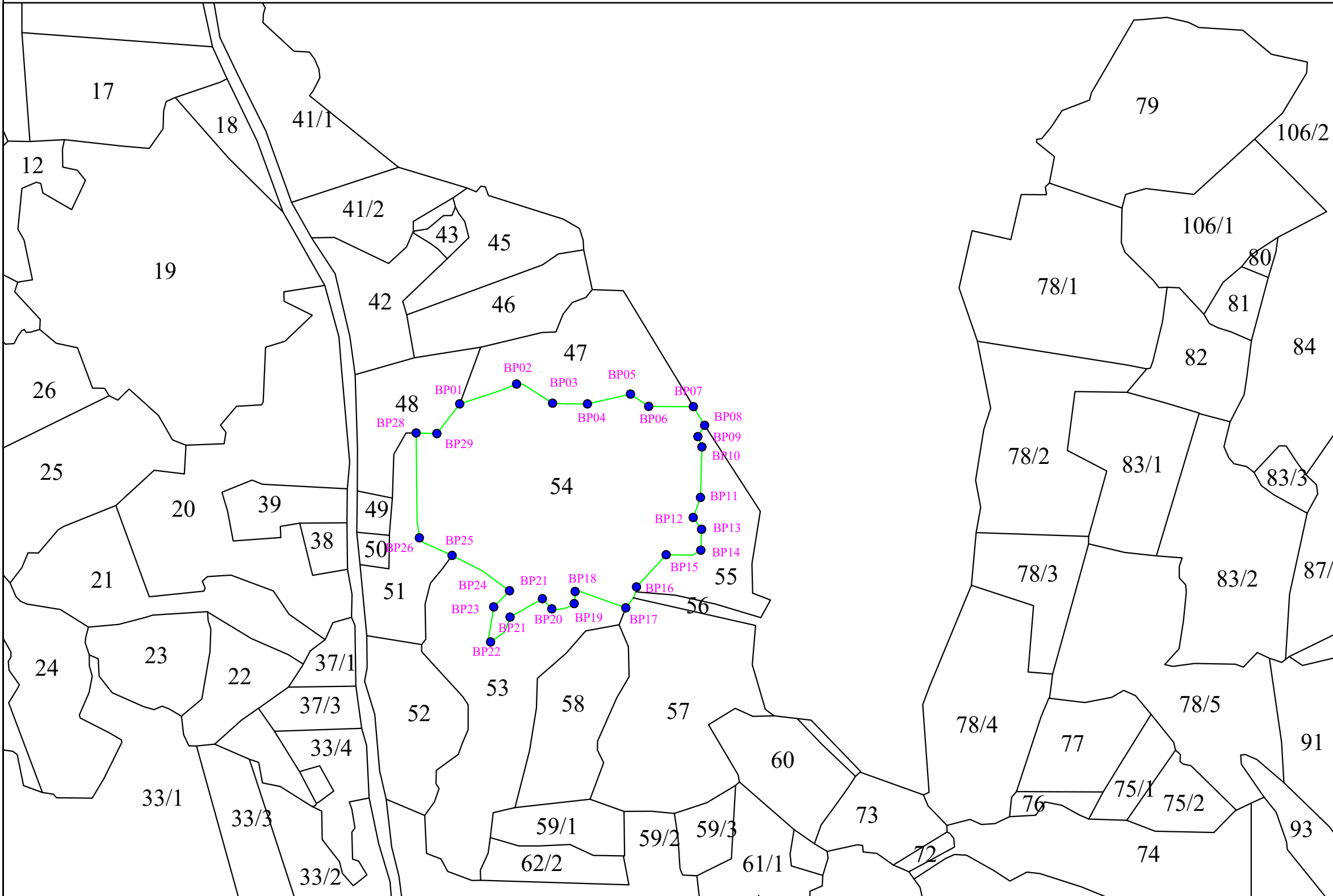
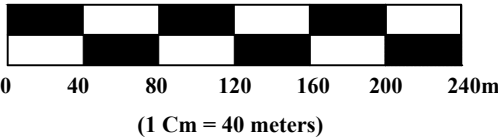


GEOREFRENCED CADASTRAL MAP OF THE DGPS SURVEYED AREA FOR DIVERSION PROPOSAL OF NEW EKLAVYA MODERN RESIDENTIAL SCHOOL,
AT VILLAGE BHANDARDIGI , TEHSIL-DURGKONDAL, DISTRICT- NORTH BASTAR KANKER, (C.G.)



Scale 1:4,000


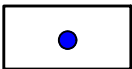
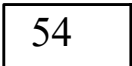


BOUNDARY COORDINATES OF THE DGPS SURVEYED
AREA OF NEW EMRS SCHOOLE, VILLAGE- BHANDARDIGI

S.N.	LATITUDE	LONGITUDE
BASE POINT	20° 14' 43.68479" N	80° 56' 19.85640" E
BP01	20° 14' 42.93240" N	80° 56' 23.28000" E
BP02	20° 14' 43.58040" N	80° 56' 25.34640" E
BP03	20° 14' 43.13759" N	80° 56' 26.48760" E
BP04	20° 14' 43.13040" N	80° 56' 27.74400" E
BP05	20° 14' 43.38599" N	80° 56' 29.07239" E
BP06	20° 14' 43.06559" N	80° 56' 29.78520" E
BP07	20° 14' 42.89640" N	80° 56' 31.18560" E
BP08	20° 14' 42.33840" N	80° 56' 31.60680" E
BP09	20° 14' 41.90639" N	80° 56' 31.33319" E
BP10	20° 14' 41.57880" N	80° 56' 31.55639" E
BP11	20° 14' 40.30079" N	80° 56' 31.54920" E
BP12	20° 14' 39.56639" N	80° 56' 31.39439" E
BP13	20° 14' 39.14880" N	80° 56' 31.50239" E
BP14	20° 14' 38.47560" N	80° 56' 31.46279" E
BP15	20° 14' 38.16239" N	80° 56' 30.33600" E
BP16	20° 14' 37.25880" N	80° 56' 29.25960" E
BP17	20° 14' 36.78360" N	80° 56' 28.92119" E
BP18	20° 14' 37.24440" N	80° 56' 27.21840" E
BP19	20° 14' 36.87360" N	80° 56' 27.21480" E
BP20	20° 14' 36.60719" N	80° 56' 26.46959" E
BP21	20° 14' 37.00679" N	80° 56' 26.09520" E
BP22	20° 14' 36.39840" N	80° 56' 24.99359" E
BP23	20° 14' 35.75400" N	80° 56' 24.37079" E
BP24	20° 14' 36.83400" N	80° 56' 24.50040" E
BP25	20° 14' 37.21559" N	80° 56' 24.93599" E
BP26	20° 14' 38.37119" N	80° 56' 23.20440" E
BP27	20° 14' 38.88600" N	80° 56' 21.81479" E
BP28	20° 14' 41.98920" N	80° 56' 21.75359" E
BP29	20° 14' 42.09359" N	80° 56' 22.50960" E
GCP1	20° 14' 57.83279" N	80° 56' 14.67959" E
GCP2	20° 15' 01.14119" N	80° 55' 40.27799" E

MAP NO. - 1

MAP LEGEND

-  PROPOSED DIVERSION LAND
-  BOUNDARY POINT
-  KHASRA NO.

[Signature]
Divisional Forest Officer
East Bhanupratappur Division

LAND DETAIL

District/Forest Division	Tehsil / Range	Village	Type of Land	Khasra Number	Surveyed Area (In Hect.)
NORTH BASTAR KANKER/EAST BHANUPRAPPUR	DURGKONDAL	BHANDARDIGI	REVENUE FOREST	54	4.83
TOTAL					4.83

APPLICANT

[Signature]
Assistant Commissioner
Tribal Development
U. B. Kanker (C.G.)

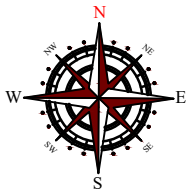
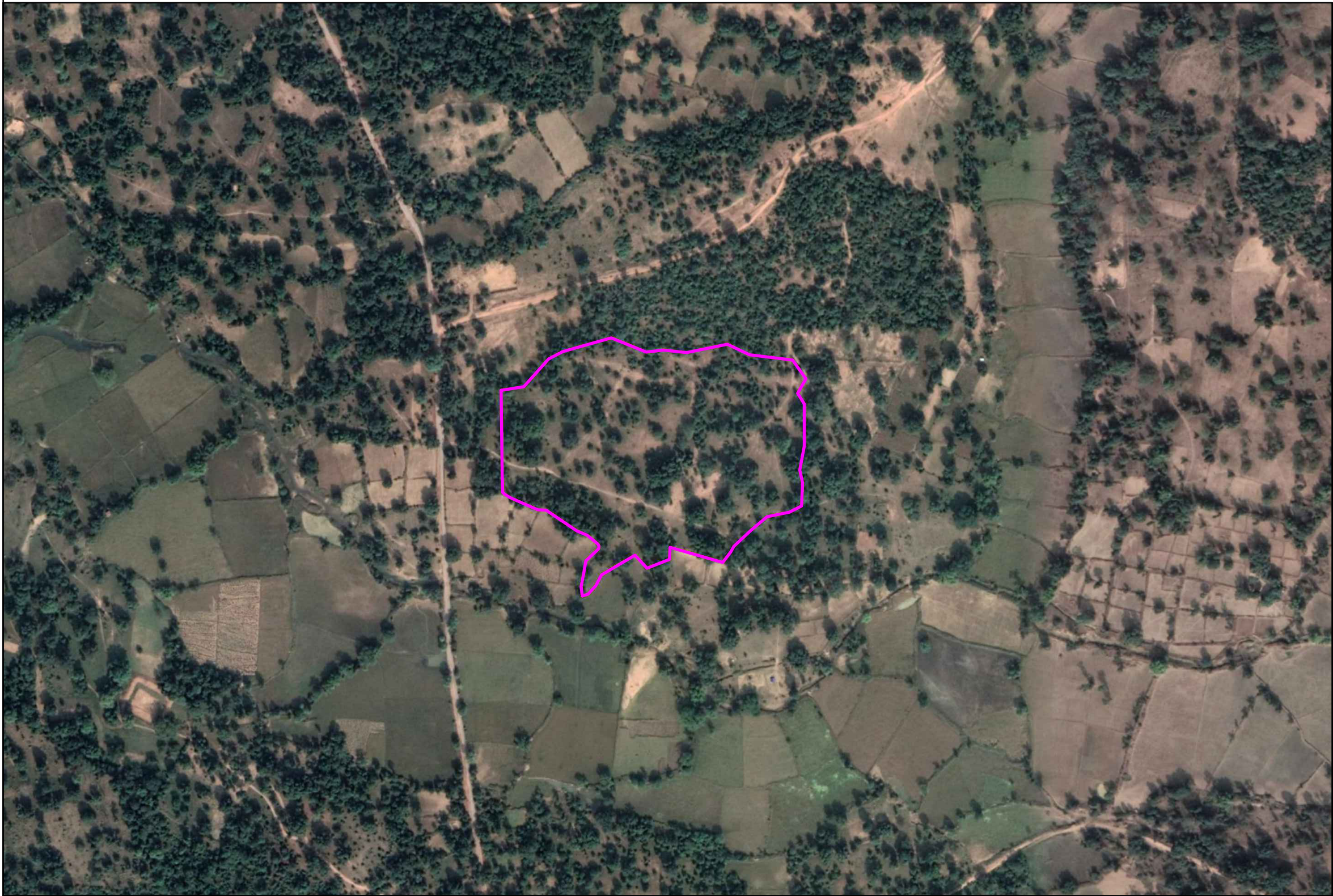
ASSISTANT COMMISSIONER
TRIBAL WELFARE DEPARTMENT
DIST. - NORTH BASTAR KANKER, (C.G.)



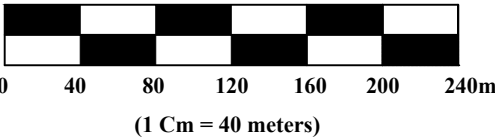
AVI CONSULTANCY SERVICES
34/945, Dr. RAJENDRA NAGAR, NEAR GOVARDHAN CHOWK,
RAIPUR - 492001 (C.G.)
Email - avi_csrpr@rediffmail.com

PREPARED BY,

GOOGLE MAP OF THE DGPS SURVEYED AREA FOR DIVERSION PROPOSAL OF NEW EKLAVYA MODERN RESIDENTIAL SCHOOL,
AT VILLAGE BHANDARDIGI , TEHSIL-DURGKONDAL, DISTRICT- NORTH BASTAR KANKER, (C.G.)



Scale 1:4,000



BOUNDARY COORDINATES OF THE DGPS SURVEYED
AREA OF NEW EMRS SCHOOLE, VILLAGE- BHANDARDIGI

S.N.	LATITUDE	LONGITUDE
BASE POINT	20° 14' 43.68479" N	80° 56' 19.85640" E
BP01	20° 14' 42.93240" N	80° 56' 23.28000" E
BP02	20° 14' 43.58040" N	80° 56' 25.34640" E
BP03	20° 14' 43.13759" N	80° 56' 26.48760" E
BP04	20° 14' 43.13040" N	80° 56' 27.74400" E
BP05	20° 14' 43.38599" N	80° 56' 29.07239" E
BP06	20° 14' 43.06559" N	80° 56' 29.78520" E
BP07	20° 14' 42.89640" N	80° 56' 31.18560" E
BP08	20° 14' 42.33840" N	80° 56' 31.60680" E
BP09	20° 14' 41.90639" N	80° 56' 31.33319" E
BP10	20° 14' 41.57880" N	80° 56' 31.55639" E
BP11	20° 14' 40.30079" N	80° 56' 31.54920" E
BP12	20° 14' 39.56639" N	80° 56' 31.39439" E
BP13	20° 14' 39.14880" N	80° 56' 31.50239" E
BP14	20° 14' 38.47560" N	80° 56' 31.46279" E
BP15	20° 14' 38.16239" N	80° 56' 30.33600" E
BP16	20° 14' 37.25880" N	80° 56' 29.25960" E
BP17	20° 14' 36.78360" N	80° 56' 28.92119" E
BP18	20° 14' 37.24440" N	80° 56' 27.21840" E
BP19	20° 14' 36.87360" N	80° 56' 27.21480" E
BP20	20° 14' 36.60719" N	80° 56' 26.46959" E
BP21	20° 14' 37.00679" N	80° 56' 26.09520" E
BP22	20° 14' 36.39840" N	80° 56' 24.99359" E
BP23	20° 14' 35.75400" N	80° 56' 24.37079" E
BP24	20° 14' 36.83400" N	80° 56' 24.50040" E
BP25	20° 14' 37.21559" N	80° 56' 24.93599" E
BP26	20° 14' 38.37119" N	80° 56' 23.20440" E
BP27	20° 14' 38.88600" N	80° 56' 21.81479" E
BP28	20° 14' 41.98920" N	80° 56' 21.75359" E
BP29	20° 14' 42.09359" N	80° 56' 22.50960" E
GCP1	20° 14' 57.83279" N	80° 56' 14.67959" E
GCP2	20° 15' 01.14119" N	80° 55' 40.27799" E

MAP NO. - 2

MAP LEGEND




PROPOSED DIVERSION LAND


Divisional Forest Officer
East Bhanupratappur Division

LAND DETAIL

District/ Forest Division	Tehsil / Range	Village	Type of Land	Khasra Number	Surveyed Area (In Hect.)
NORTH BASTAR KANKER/EAST BHANUPRAPPUR	DURGKONDAL	BHANDARDIGI	REVENUE FOREST	54	4.83
TOTAL					4.83

APPLICANT


Assistant Commissioner
Tribal Development
U. B. Kanker (C.G.)

ASSISTANT COMMISSIONER
TRIBAL WELFARE DEPARTMENT
DIST. - NORTH BASTAR KANKER, (C.G.)

PREPARED BY,



AVI CONSULTANCY SERVICES
34/945, Dr. RAJENDRA NAGAR, NEAR GOVARDHAN CHOWK,
RAIPUR - 492001 (C.G.)
Email - avi_csrpr@rediffmail.com