

Proposed Forest Land For Lease Renewal for 400 KV, Anpara-Varanasi Transmission Line on Forest Division: Mirzapur, District: Mirzapur (Uttar Pradesh)

निर्जन के लिए नहीं NOT FOR EXPORT

OPEN SERIES MAP

No. G44R4

Scale 1:50,000

Sheet No. G44Q15 (83415) G44R3 (83416) G44R7 (83417) G44Q16 (83418) G44R4 (83419) G44R8 (83420) G44W13 (83421) G44X1 (83422) G44X5 (83423)

सर्वेक्षण विभाग SURVEY OF INDIA

Price Rs. 10/-

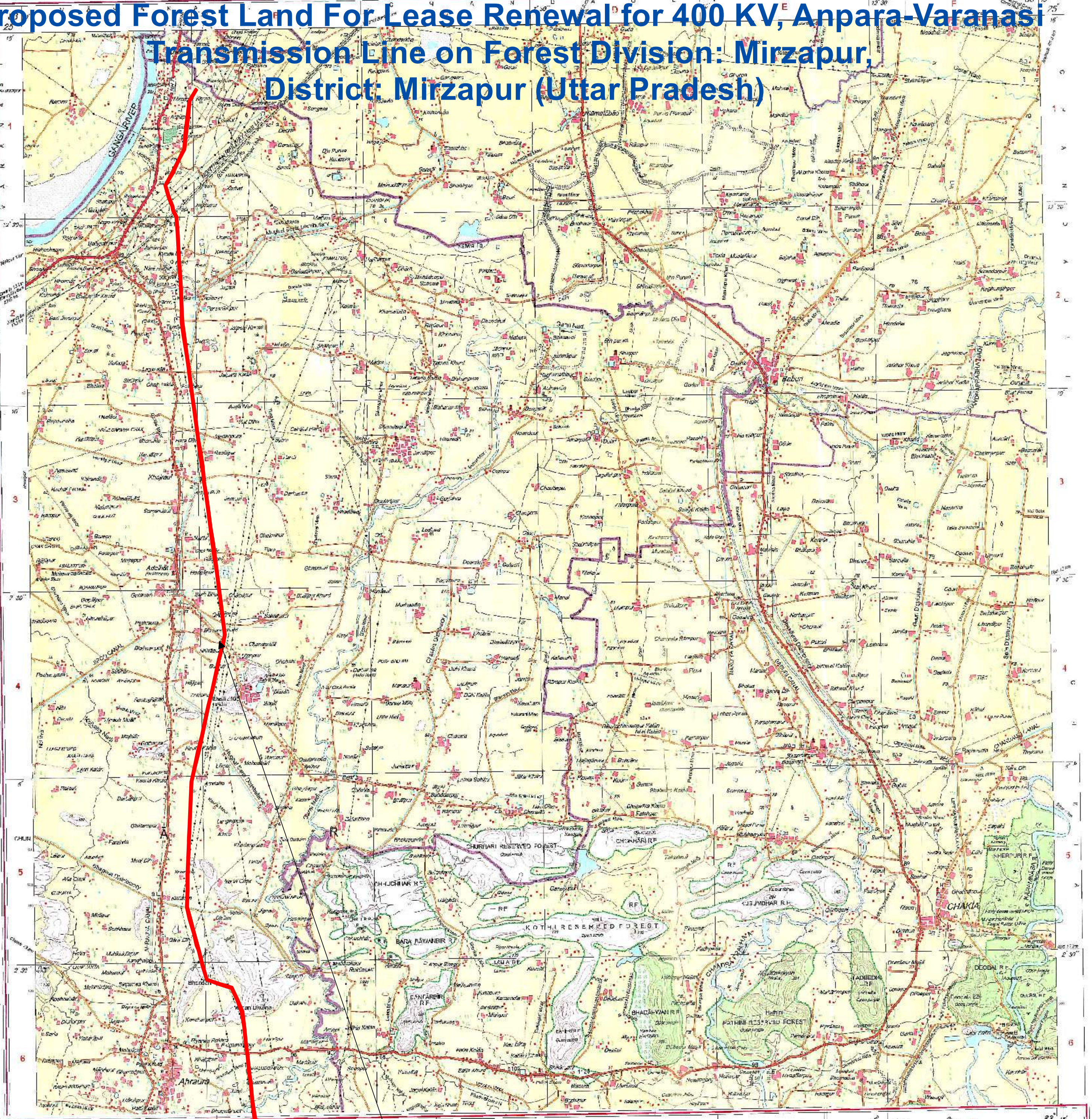
CONVENTIONAL SYMBOLS

REFERENCES

NOTES

Projection - UTM Datum - WGS 84

Scale 1:50,000



निर्जन के लिए नहीं NOT FOR EXPORT

OPEN SERIES MAP

No. G44X1

Scale 1:50,000

Sheet No. G44Q16 (83416) G44R4 (83419) G44R8 (83420) G44W13 (83421) G44X1 (83422) G44X5 (83423) G44W14 (83424) G44X2 (83425) G44X6 (83426)

सर्वेक्षण विभाग SURVEY OF INDIA

Price Rs. 10/-

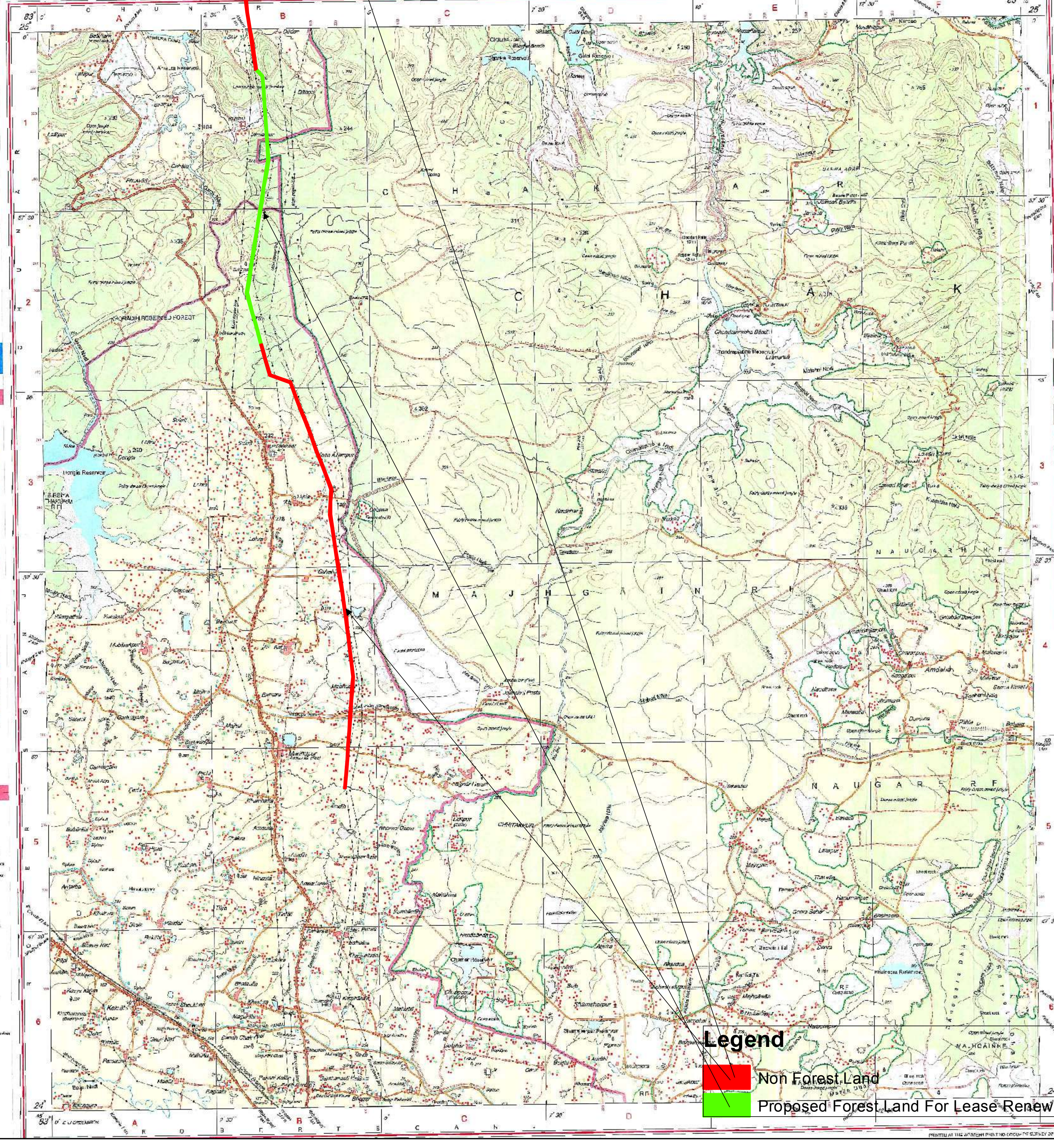
CONVENTIONAL SYMBOLS

REFERENCES

NOTES

Projection - UTM Datum - WGS 84

Scale 1:50,000



Legend

- Non Forest Land
- Proposed Forest Land For Lease Renewal

Signature
Date 15/01/2018
Executive Engineer
Electricity Transmission Division-II
U.P. Power Transmission Corporation Ltd.