

No. G44U2

Scale 1:50,000

Chhatarpur MADHYA PRADESH G44T13 (54P/13)	G44U1 (63D/1)	G44U5 (63D/5)
G44T14 (54P/14)	G44U2 (63D/2) Panna MADHYA PRADESH	G44U6 (63D/6)
G44T15 (54P/15)	G44U3 (63D/3)	G44U7 (63D/7)

1 Bānda, UTTAR PRADESH.
2 Damoh, MADHYA PRADESH.
3 Satna, MADHYA PRADESH.

भारतीय सर्वेक्षण विभाग

SURVEY OF INDIA

1st Edition 2010.

Price : Rs. 50/-

CONVENTIONAL SYMBOLS

Express highway: with toll; with bridges: with distance stone	
Roads, metalled: according to importance	
Roads, double carriageway: according to importance	
Unmetalled road: Cart-track: Pack-track with pass: Foot-path	
Streams: with track in bed: undefined: Canal	
Dams: masonry or rock-filled: earthwork: Weir	
River: dry with water channel; with island & rocks: Tidal river	
Submerged rocks: Shoal: Swamp: Reeds	
Wells: lined; unlined: Tube-well: Spring: Tanks: perennial; dry	
Embankments: road or rail; tank: Broken ground	
Railways, broad gauge: double; single with station; under constrm.	
Railways, other gauges: double; single with distance stone; do.	
Mineral line or tramway: Kin. Cutting with tunnel	
Contours with sub-features: Rocky slopes: Cliffs	
Sand features: (1)flat: (2)sand-hills(permanent): (3)dunes(shifting)	
Towns or Villages: inhabited; deserted: Fort	
Huts: permanent; temporary: Tower: Antiquities	
Temple: Chhatri: Church: Mosque: Idgah: Tomb: Graves	
Lighthouse: Lightship: Buoys: lighted: unlighted: Anchorage	
Mine: Vine on trellis: Grass: Scrub	
Palms: palmyra; other: Plantain: Conifer: Bamboo: Other trees	
Areas: cultivated; wooded: Surveyed tree	
Boundary: international	
state: demarcated; undemarcated	
district: subdivision; tahsil or taluk; forest	
Boundary pillars: surveyed; unlocated	
Heights, triangulated: station; point; approximate	
Bench-mark: geodetic; tertiary: canal	
Post office: Telegraph office: Overhead tank	
Rest house or inspection bungalow: Circuit house: Police station	
Camping ground: Forest: reserved; protected	
Spaced names: administrative: locality or tribal	
Hospital: Dispensary: Veterinary: Hospital / Dispensary	
Aerodrome: Halpadd: Tourist site	
Power line: with pylons surveyed; with poles unsurveyed	
Degraded Forest land identified for compensatory afforestation	

REFERENCE

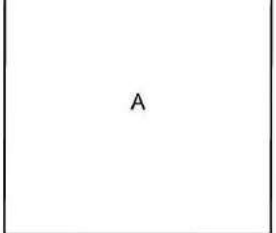
NH 75 National Highway No. 75.

NOTES :-

Heights are in metres and above Indian mean sea level.
Contours are approximate.
A relative height, e.g., 3, represents the approximate height, in metres, between the top and bottom of a steep slope.
The kilometre stone numbers along roads and canals are shown in slant type, e.g. '3' whereas milestone numbers are shown in upright type, e.g. '5'.
A relative height, e.g., 3, against a well, indicates its total depth in metres.
The triangulated heights and contours in this sheet have not been adjusted to the heights of the spirit-levelled bench marks and may not be strictly in accordance with them.

COMPILATION INDEX

A. Surveyed during 1968-69. Updated for major details during 2005-06.



Projection - UTM Datum - WGS 84

Magnetic Variation from True North about $\frac{1}{4}^{\circ}$ West in 2005.
(Decreasing by about 1' annually).

1:50,000

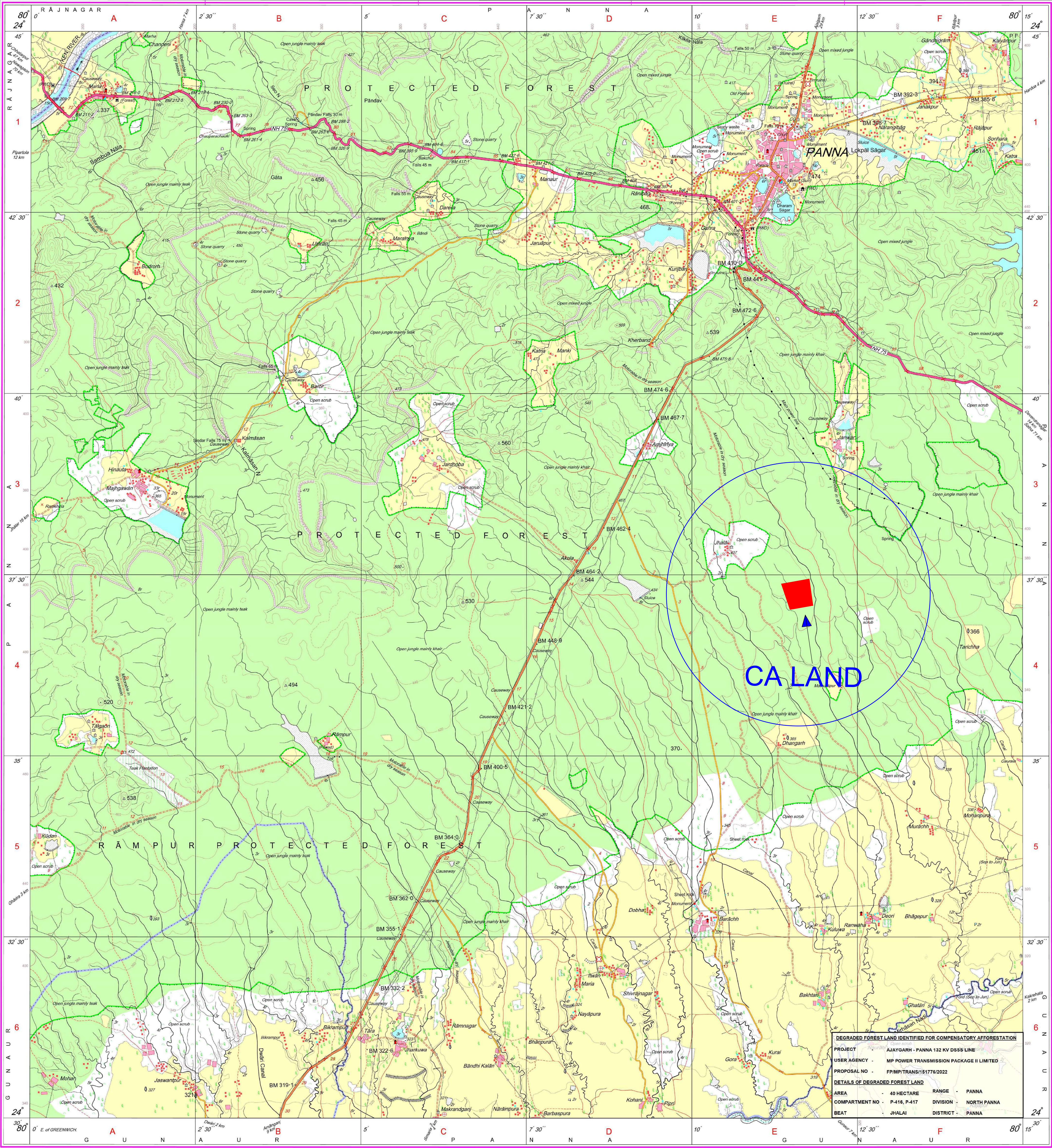
500 m to 1 cm 2 cm to 1 km

CONTOUR INTERVAL 20 METRES

For further details about this map, please contact
Director
Madhya Pradesh Geo-Spatial Data Centre
Survey of India
Survey Colony, Vijaynagar
Jabalpur.

WEBSITE - www.surveyofindia.gov.in

Reproduction in whole or part by any means is prohibited
without the written permission of Survey of India, the
National Mapping Agency.



REG. No. -SPG D'10 (Madhya Pradesh GDC-150,000) -

भारत के महसर्वेक्षक के निदेशन में प्रकाशित,
Published under the direction of Surveyor General of India,
Survey of India, Hattibarkala Estate, Post Box No.37, Dehra Dun-248001 (Uttarakhand)
Department of Science & Technology, Government of India.

PRINTED AT THE SOUTHERN PRINTING GROUP OF SURVEY OF INDIA.