



1

Bulandshahr
UTTAR PRADESH

H43X16
(33° 0', 76° 0')

H44S4
(29° 0', 78° 0')

H44S8
(32° 0', 81° 0')

Aligarh
UTTAR PRADESH

G43F13
(34° 0', 73° 0')

G44A1
(34° 0', 71° 0')

G44A5
(34° 0', 75° 0')

Mathura
UTTAR PRADESH

G43F14
(28° 0', 77° 0')

G44A2
(34° 0', 72° 0')

G44A6
(34° 0', 74° 0')

Mathura Nagar
UTTAR PRADESH

2

1 Bulandshahr, UTTAR PRADESH.
2 Mathura, UTTAR PRADESH.
3 Kanpur Nagar, UTTAR PRADESH.

UTTAR PRADESH

CONVENTIONAL SYMBOLS

REFERENCES

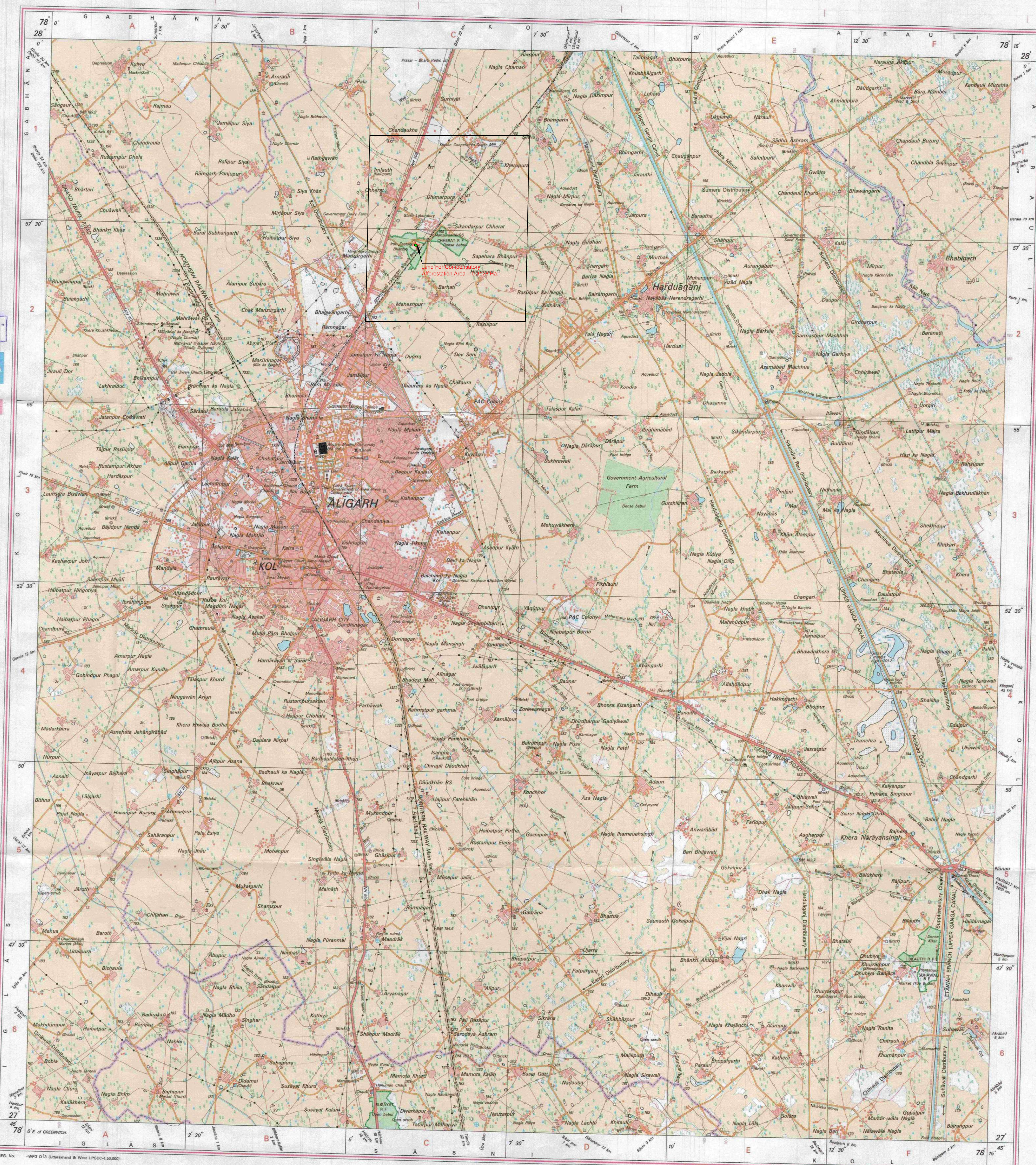
NH 520 National Highway No. 505.	NH 31 National Highway No. 31.
SH 71 State Highway No. 71.	PAC Colony Provincial Animal Contagious Colony.

NOTES

1. All heights are in metres and above Indian mean sea level.
2. Notes are approximate.
3. relative height, *or*, represents the approximate height. In metres, between the top and bottom of a
4. note.
5. notes, shown in this area, usually contain water from July to December.
6. *low-lands* are numerous throughout the valley; only the important ones have been shown.
7. In following notes numbers along road, railway and canals are shown in *slant type*, e.g. '5' whereas
8. relative numbers are shown in *upright type* e.g. '50'.
9. *metal* roads and cart - tracks in this area are generally *immaculate* in dry season. Permission to use
10. *metal* roads is required from the *Indigine* authorities.
11. *portable* buildings are shown in *slant type*.

WEBSITE - www.surveyofindia.gov.in

Reproduction in whole or part by any means is prohibited without the written permission of Survey of India, the National Mapping Agency.



Land Identified for Compensatory Afforestation

Title :

GURGAON PALWAL TRANSMISSION LIMITED

