

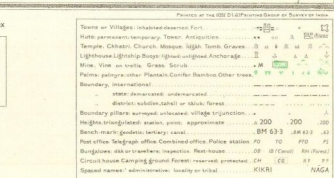
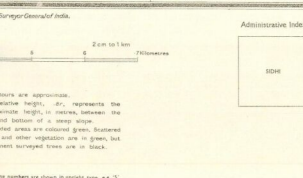
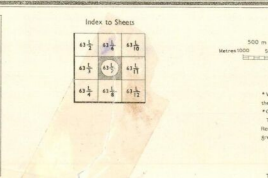
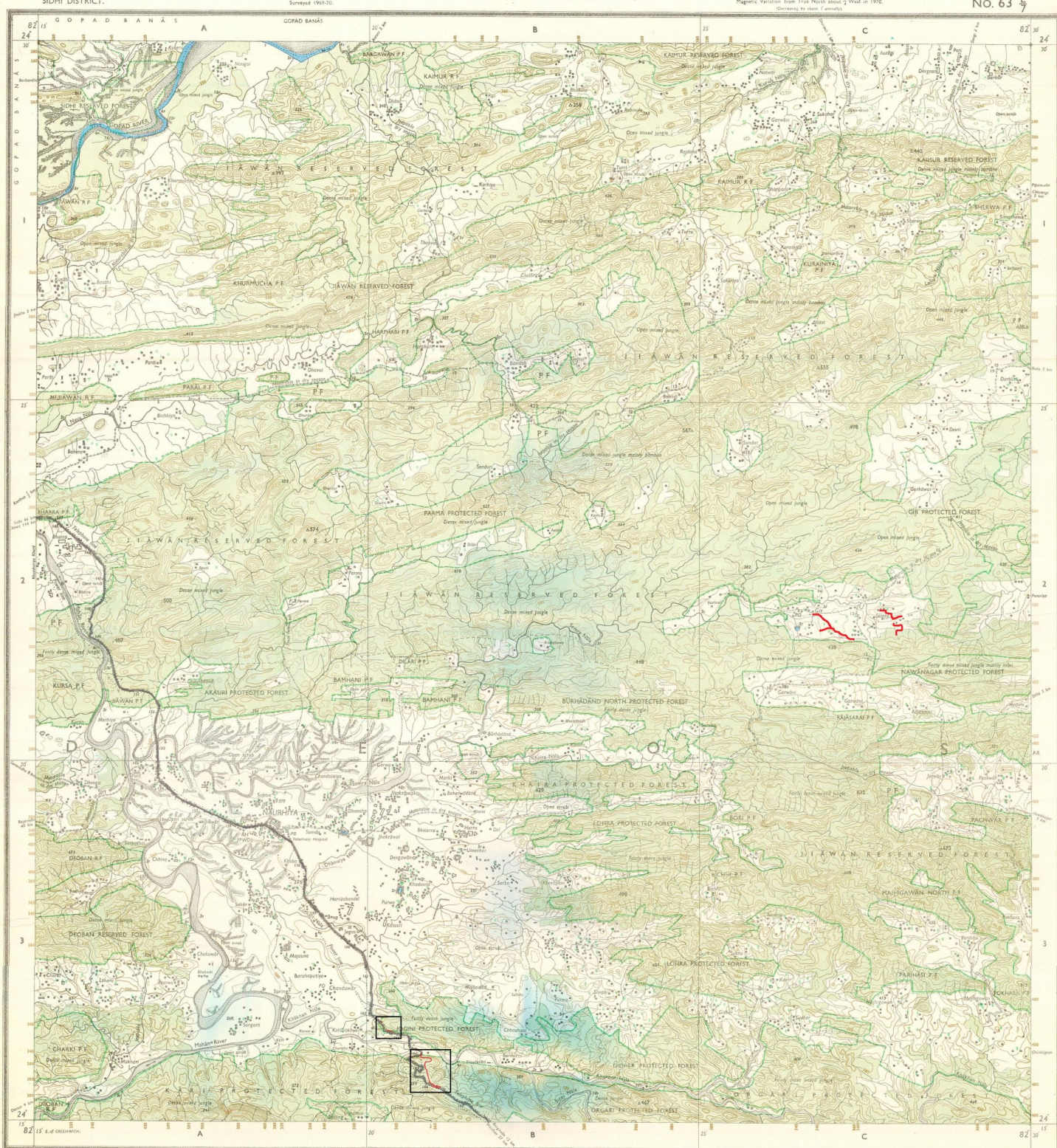
Sheet No-3

INDIA
REFER TO THIS MAP AS - 1:50,000
SHEET 63L/7 FIRST EDITION

MADHYA PRADESH

FIRST EDITION

No. 63 L



REFER TO THIS MAP AS - 1:50,000
SHEET 63 L/7 FIRST EDITION
INDIA

GOVERNMENT OF INDIA COPYRIGHT, 1975.
Price: Five Rupees.

SIDHI DISTRICT.

Surveyed 1969-70



2025 RELEASE UNDER E.O. 14176

Published under the direction of Major-General K.L. Khosla, B.Sc., B.E. (Civil), F.I.S., F.I.E., F.I.G.U., M.A.S.C.E. (U.S.A.), Surveyor General of India.

1976.
52,000

Administrative Index

PRINTED AT THE 104 (MID) PRINTING GROUP OF SURVEY OF INDIA

[illegible]

GOVERNMENT OF INDIA COPYRIGHT, 1976.

REFER TO THIS MAP AS :- 1:50,000
SHEET 63 L/8 FIRST EDITION

INDIA

MADHYA PRADESH
UTTAR PRADESH

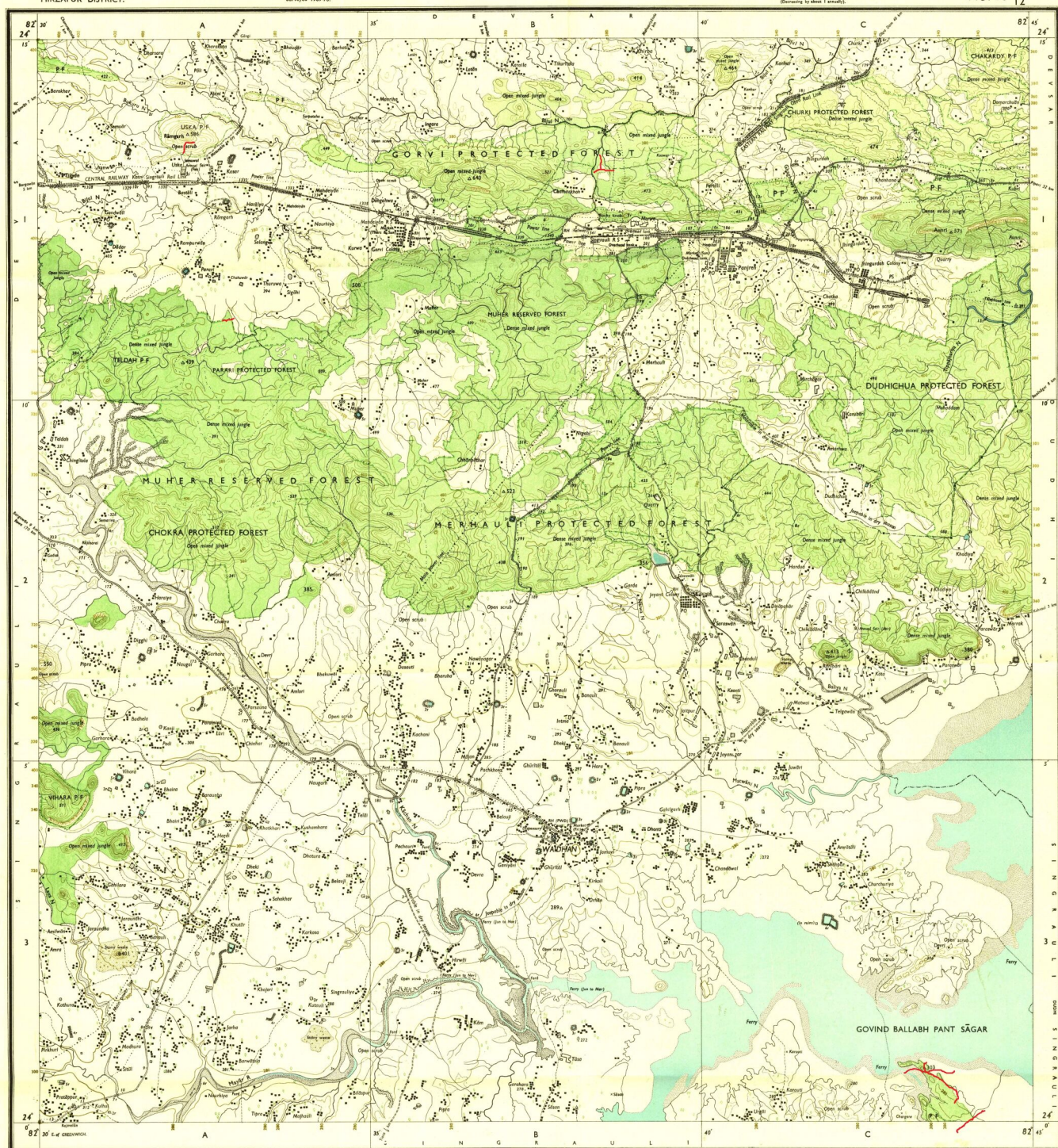
FIRST EDITION

Magnetic Variation from True North about $\frac{1}{4}^{\circ}$ West in 1970.
(Decreasing by about $1'$ annually).

No. 63 $\frac{L}{12}$

SIDHI DISTRICT.
MIRZĀPUR DISTRICT.

Surveyed 1969-70

[illegible]

$63\frac{L}{7}$	$63\frac{L}{11}$	$63\frac{L}{15}$
$63\frac{L}{8}$	$63\frac{L}{12}$	$63\frac{L}{14}$
$64\frac{1}{5}$	$64\frac{1}{9}$	$64\frac{1}{13}$

Published under the direction of Major-General K. L. Khosla, BSc, BE (Civil), FIS, FIE, FIGU, MASCE (U.S.A.), Surveyor General of India.

500 m to 1 cm

1:50,000

2 cm to 1 km

HEIGHTS & CONTOURS IN METRES
CONTOUR INTERVAL 20 METRES

*Water features are shown in blue where they generally contain water.

The exterior boundaries of areas of Reserved or Protected Forests are shown by

green ribbons. trees and other vegetation are in green, but prehistoric surveyed trees are in black.

Some roads, distance stones, power and telephone lines, shops, ferries, and cars/trucks and one canal have been entered from the verification

The state boundary between Madhya Pradesh and Uttar Pradesh States has been surveyed as pointed out by the local officials on the ground but has not been verified by the Government concerned.

For the first time, reports by the appropriate agencies:

Administrative Index

[illegible]

© GOVERNMENT OF INDIA. COPYRIGHT, 1976

REFER TO THIS MAP AS :- 1:50,000
SHEET 63 L/12 FIRST EDITION
INDIA

निर्यात के लिए नहीं NOT FOR EXPORT

MADHYA PRADESH
UTTAR PRADESH

FIRST EDITION

INDIA
REFER TO THIS MAP AS - 1:50,000
SHEET 63 L/16 FIRST EDITION

No. 63 L/16

SIDHI DISTRICT
MIRZAPUR DISTRICT.

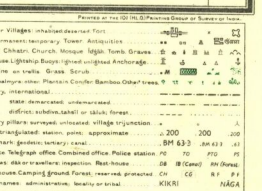
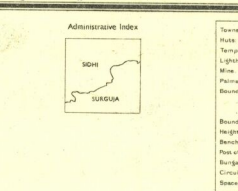
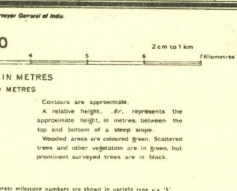
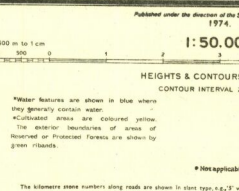
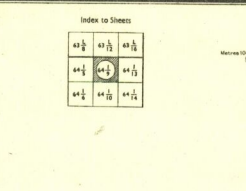
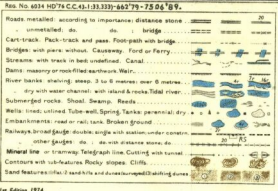
Surveyed 1966-67

Magnetic Variation from True North about 1° West in 1970.
(Decreasing by about 1° annually)



Index to Sheets

63/1	63/2	63/3
63/4	63/5	63/6
63/7	63/8	63/9
63/10	63/11	63/12
63/13	63/14	63/15
63/16	63/17	63/18
63/19	63/20	63/21
63/22	63/23	63/24
63/25	63/26	63/27
63/28	63/29	63/30
63/31	63/32	63/33
63/34	63/35	63/36
63/37	63/38	63/39
63/40	63/41	63/42
63/43	63/44	63/45
63/46	63/47	63/48
63/49	63/50	63/51
63/52	63/53	63/54
63/55	63/56	63/57
63/58	63/59	63/60
63/61	63/62	63/63
63/64	63/65	63/66
63/67	63/68	63/69
63/70	63/71	63/72
63/73	63/74	63/75
63/76	63/77	63/78
63/79	63/80	63/81
63/82	63/83	63/84
63/85	63/86	63/87
63/88	63/89	63/90
63/91	63/92	63/93
63/94	63/95	63/96
63/97	63/98	63/99
63/100	63/101	63/102
63/103	63/104	63/105
63/106	63/107	63/108
63/109	63/110	63/111
63/112	63/113	63/114
63/115	63/116	63/117
63/118	63/119	63/120
63/121	63/122	63/123
63/124	63/125	63/126
63/127	63/128	63/129
63/130	63/131	63/132
63/133	63/134	63/135
63/136	63/137	63/138
63/139	63/140	63/141
63/142	63/143	63/144
63/145	63/146	63/147
63/148	63/149	63/150
63/151	63/152	63/153
63/154	63/155	63/156
63/157	63/158	63/159
63/160	63/161	63/162
63/163	63/164	63/165
63/166	63/167	63/168
63/169	63/170	63/171
63/172	63/173	63/174
63/175	63/176	63/177
63/178	63/179	63/180
63/181	63/182	63/183
63/184	63/185	63/186
63/187	63/188	63/189
63/190	63/191	63/192
63/193	63/194	63/195
63/196	63/197	63/198
63/199	63/200	63/201
63/202	63/203	63/204
63/205	63/206	63/207
63/208	63/209	63/210
63/211	63/212	63/213
63/214	63/215	63/216
63/217	63/218	63/219
63/220	63/221	63/222
63/223	63/224	63/225
63/226	63/227	63/228
63/229	63/230	63/231
63/232	63/233	63/234
63/235	63/236	63/237
63/238	63/239	63/240
63/241	63/242	63/243
63/244	63/245	63/246
63/247	63/248	63/249
63/250	63/251	63/252
63/253	63/254	63/255
63/256	63/257	63/258
63/259	63/260	63/261
63/262	63/263	63/264
63/265	63/266	63/267
63/268	63/269	63/270
63/271	63/272	63/273
63/274	63/275	63/276
63/277	63/278	63/279
63/280	63/281	63/282
63/283	63/284	63/285
63/286	63/287	63/288
63/289	63/290	63/291
63/292	63/293	63/294
63/295	63/296	63/297
63/298	63/299	63/300
63/301	63/302	63/303
63/304	63/305	63/306
63/307	63/308	63/309
63/310	63/311	63/312
63/313	63/314	63/315
63/316	63/317	63/318
63/319	63/320	63/321
63/322	63/323	63/324
63/325	63/326	63/327
63/328	63/329	63/330
63/331	63/332	63/333
63/334	63/335	63/336
63/337	63/338	63/339
63/340	63/341	63/342
63/343	63/344	63/345
63/346	63/347	63/348
63/349	63/350	63/351
63/352	63/353	63/354
63/355	63/356	63/357
63/358	63/359	63/360
63/361	63/362	63/363
63/364	63/365	63/366
63/367	63/368	63/369
63/370	63/371	63/372
63/373	63/374	63/375
63/376	63/377	63/378
63/379	63/380	63/381
63/382	63/383	63/384
63/385	63/386	63/387
63/388	63/389	63/390
63/391	63/392	63/393
63/394	63/395	63/396
63/397	63/398	63/399
63/400	63/401	63/402
63/403	63/404	63/405
63/406	63/407	63/408
63/409	63/410	63/411
63/412	63/413	63/414
63/415	63/416	63/417
63/418	63/419	63/420
63/421	63/422	63/423
63/424	63/425	63/426
63/427	63/428	63/429
63/430	63/431	63/432
63/433	63/434	63/435
63/436	63/437	63/438
63/439	63/440	63/441
63/442	63/443	63/444
63/445	63/446	63/447
63/448	63/449	63/450
63/451	63/452	63/453
63/454	63/455	63/456
63/457	63/458	63/459
63/460	63/461	63/462
63/463	63/464	63/465
63/466	63/467	63/468
63/469	63/470	63/471
63/472	63/473	63/474
63/475	63/476	63/477
63/478	63/479	63/480
63/481	63/482	63/483
63/484	63/485	63/486
63/487	63/488	63/489
63/490	63/491	63/492
63/493	63/494	63/495
63/496	63/497	63/498
63/499	63/500	63/501
63/502	63/503	63/504
63/505	63/506	63/507
63/508	63/509	63/510
63/511	63/512	63/513
63/514	63/515	63/516
63/517	63/518	63/519
63/520	63/521	63/522
63/523	63/524	63/525
63/526	63/527	63/528
63/529	63/530	63/531
63/532	63/533	63/534
63/535	63/536	63/537
63/538	63/539	63/540
63/541	63/542	63/543
63/544	63/545	63/546
63/547	63/548	63/549
63/550	63/551	63/552
63/553	63/554	63/555
63/556	63/557	63/558
63/559	63/560	63/561
63/562	63/563	63/564
63/565	63/566	63/567
63/568	63/569	63/570
63/571	63/572	63/573
63/574	63/575	63/576
63/577	63/578	63/579
63/580	63/581	63/582
63/583	63/584	63/585
63/586	63/587	63/588
63/589	63/590	63/591
63/592	63/593	63/594
63/595	63/596	63/597
63/598	63/599	63/600
63/601	63/602	63/603
63/604	63/605	63/606
63/607	63/608	63/609
63/610	63/611	63/612
63/613	63/614	63/615
63/616	63/617	63/618
63/619	63/620	63/621
63/622	63/623	63/624
63/625	63/626	63/627
63/628	63/629	63/630
63/631	63/632	63/633
63/634	63/635	63/636
63/637	63/638	63/639
63/640	63/641	63/642
63/643	63/644	63/645
63/646	63/647	63/648
63/649	63/650	63/651
63/652	63/653	63/654
63/655	63/656	63/657
63/658	63/659	63/660
63/661	63/662	63/663
63/664	63/665	63/666
63/667	63/668	63/669
63/670	63/671	63/672
63/673	63/674	63/675
63/676	63/677	63/678
63/679	63/680	63/681
63/682	63/683	63/684
63/685	63/686	63/687
63/688	63/689	63/690
63/691	63/692	63/693
63/694	63/695	63/696
63/697	63/698	63/699
63/700	63/701	63/702
63/703	63/704	63/705
63/706	63/707	63/708
63/709	63/710	63/711
63/712	63/713	63/714
63/715	63/716	63/717
63/718	63/719	63/720
63/721	63/722	63/723
63/724	63/725	63/726
63/727	63/728	63/729
63/730	63/731	63/732
63/733	63/734	63/735
63/736	63/737	63/738
63/739	63/740	63/741
63/742	63/743	63/744
63/745	63/746	63/747
63/748	63/749	63/750
63/751	63/752	63/753
63/754	63/755	63/756
63/757	63/758	63/759
63/760	63/761	63/762
63/763	63/764	63/765
63/766	63/767	63/768
63/769	63/770	63/771
63/772	63/773	63/774
63/775	63/776	63/777
63/778	63/779	63/780
63/781	63/782	63/783
63/784	63/785	63/786
63/787	63/788	63/789
63/790	63/791	63/792
63/793	63/794	63/795
63/796	63/797	63/798
63/799	63/800	63/801
63/802	63/803	63/804
63/805	63/806	63/807
63/808	63/809	63/810
63/811	63/812	63/813
63/814	63/815	63/816
63/817	63/818	63/819
63/820	63/821	63/822
63/823	63/824	63/825
63/826	63/827	63/828
63/829	63/830	63/831
63/832	63/833	63/834
63/835	63/836	63/837
63/838	63/839	63/840
63/841	63/842	63/843
63/844	63/845	63/846
63/847	63/848	63/849
63/850	63/851	63/852
63/853	63/854	63/855
63/856	63/857	63/858
63/859	63/860	63/861
63/862	63/863	63/864
63/865	63/866	63/867
63/868	63/869	63/870
63/871	63/872	63/873
63/874	63/875	63/876
63/877	63/878	63/879
63/880	63/881	63/882
63/883	63/884	63/885
63/886	63/887	63/888
63/889	63/890	63/891
63/892	63/893	63/894
63/895	63/896	63/897
63/898	63/899	63/900
63/901	63/902	63/903
63/904	63/905	63/906
63/907	63/908	63/909
63/910	63/911	63/912
63/913	63/914	63/915
63/916	63/917	63/918
63/919	63/920	63/921
63/922	63/923	63/924
63/925	63/926	63/927
63/928	63/929	63/930
63/931	63/932	63/933
63/934	63/935	63/936
63/937	63/938	63/939
63/940	63/941	63/942
63/943	63/944	63/945
63/946	63/947	63/948
63/949	63/950	63/951
63/952	63/953	63/954
63/955	63/956	63/957
63/958	63/959	63/960
63/961	63/962	63/963
63/964	63/965	63/966
63/967	63/968	63/969
63/970	63/971	63/972
63/973	63/974	63/975
63/976	63/977	63/978
63/979	63/980	63/981
63/982	63/983	63/984
63/985	63/986	63/987
63/988	63/989	63/990
63/991	63/992	63/993
63/994	63/995	63/996
63/997	63/998	63/999
63/1000	63/1001	63/1002



MADHYA PRADESH
UTTAR PRADESH

FIRST EDITION

Magnetic Variation from True North about 4° West in 1975.
(Changing at about 1° annually)

No. 64 1/13

SIDHI & SURGUJA DISTRICTS.
MIRZAPUR DISTRICT.

Surveyed 1967-68.



Scale 1:50,000
500 m to 1 cm
1 inch to 1.25 miles

HEIGHTS & CONTOURS IN METRES
CONTOUR INTERVAL 20 METRES

Water features are shown in blue where they generally contain water. Cultivated areas are coloured yellow. The exterior boundaries of areas of Reserved or Protected Forests are shown by green lines.

* Not applicable

Index to Sheets

64 1/13	64 1/14	64 1/15
64 1/16	64 1/17	64 1/18
64 1/19	64 1/20	64 1/21

Administrative Index

State boundaries are shown by thick black lines. District boundaries are shown by thin black lines. Village boundaries are shown by dotted lines. The names of villages are given in Devanagari script.

State boundaries are shown by thick black lines. District boundaries are shown by thin black lines. Village boundaries are shown by dotted lines. The names of villages are given in Devanagari script.

State boundaries are shown by thick black lines. District boundaries are shown by thin black lines. Village boundaries are shown by dotted lines. The names of villages are given in Devanagari script.

State boundaries are shown by thick black lines. District boundaries are shown by thin black lines. Village boundaries are shown by dotted lines. The names of villages are given in Devanagari script.

State boundaries are shown by thick black lines. District boundaries are shown by thin black lines. Village boundaries are shown by dotted lines. The names of villages are given in Devanagari script.

State boundaries are shown by thick black lines. District boundaries are shown by thin black lines. Village boundaries are shown by dotted lines. The names of villages are given in Devanagari script.

State boundaries are shown by thick black lines. District boundaries are shown by thin black lines. Village boundaries are shown by dotted lines. The names of villages are given in Devanagari script.