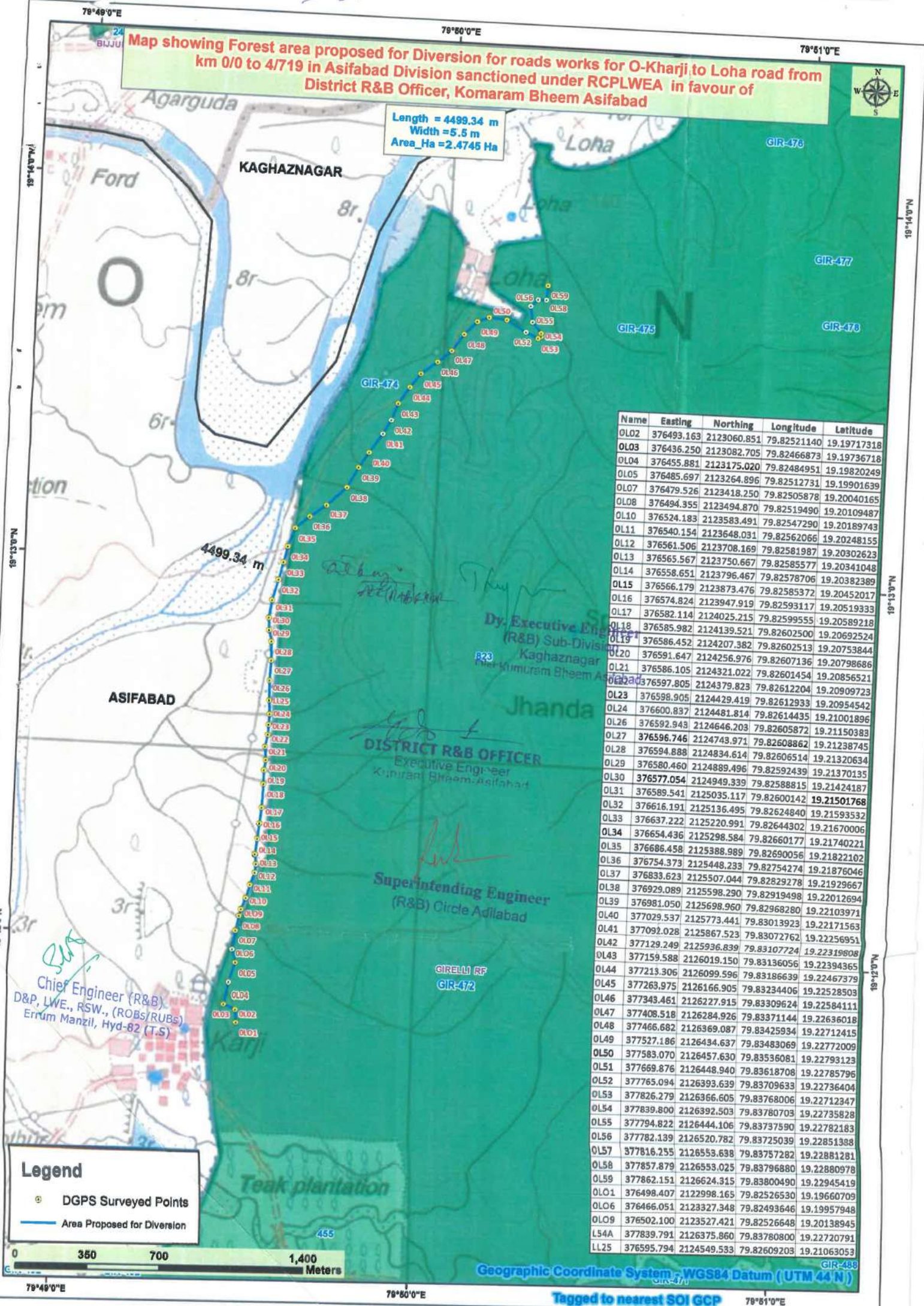


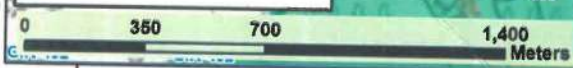
Map showing Forest area proposed for Diversion for roads works for O-Kharji to Loha road from km 0/0 to 4/719 in Asifabad Division sanctioned under RCPLWEA in favour of District R&B Officer, Komaram Bheem Asifabad

Length = 4499.34 m
Width = 5.5 m
Area_Ha = 2.4745 Ha



Name	Easting	Northing	Longitude	Latitude
OL02	376493.163	2123060.851	79.82521140	19.19717318
OL03	376436.250	2123082.705	79.82466873	19.19736718
OL04	376455.881	2123175.020	79.82484951	19.19820249
OL05	376485.697	2123264.896	79.82512731	19.19901639
OL07	376479.526	2123418.250	79.82505878	19.20040165
OL08	376494.355	2123494.870	79.82519490	19.20109487
OL10	376524.183	2123583.491	79.82547290	19.20189743
OL11	376540.154	2123648.031	79.82562066	19.20248155
OL12	376561.506	2123708.169	79.82581987	19.20302623
OL13	376565.567	2123750.667	79.82585577	19.20341048
OL14	376558.651	2123796.467	79.82578706	19.20382389
OL15	376566.179	2123873.476	79.82585372	19.20452017
OL16	376574.824	2123947.919	79.82593117	19.20519333
OL17	376582.114	2124025.215	79.82599555	19.20589218
OL18	376585.982	2124139.521	79.82602500	19.20692524
OL19	376586.452	2124207.382	79.82602513	19.20753844
OL20	376591.647	2124256.976	79.82607136	19.20798686
OL21	376586.105	2124321.022	79.82601454	19.20856521
OL22	376597.805	2124379.823	79.82612204	19.20909723
OL23	376598.905	2124429.419	79.82612933	19.20954542
OL24	376600.837	2124481.814	79.82614435	19.21001896
OL26	376592.943	2124646.203	79.82605872	19.21150383
OL27	376596.746	2124743.971	79.82608862	19.21238745
OL28	376594.888	2124834.614	79.82606514	19.21320634
OL29	376580.460	2124889.496	79.82592439	19.21370135
OL30	376577.054	2124949.339	79.82588815	19.21424187
OL31	376589.541	2125035.117	79.82600142	19.21501768
OL32	376616.191	2125136.495	79.82624840	19.21593532
OL33	376637.222	2125220.991	79.82644302	19.21670006
OL34	376654.436	2125298.584	79.82660177	19.21740221
OL35	376686.458	2125388.989	79.82690056	19.21822102
OL36	376754.373	2125448.233	79.82754274	19.21876046
OL37	376833.623	2125507.044	79.82829278	19.21929667
OL38	376929.089	2125598.290	79.82919498	19.22012694
OL39	376981.050	2125698.960	79.82968280	19.22103971
OL40	377029.537	2125773.441	79.83013923	19.22171563
OL41	377092.028	2125867.523	79.83072762	19.22256951
OL42	377129.249	2125936.839	79.83107724	19.22319808
OL43	377159.588	2126019.150	79.83136056	19.22394365
OL44	377213.306	2126099.596	79.83186639	19.22467379
OL45	377263.975	2126166.905	79.83234406	19.22528503
OL46	377343.461	212627.915	79.83309624	19.22584111
OL47	377408.518	2126284.926	79.83371144	19.22636018
OL48	377466.682	2126369.087	79.83425934	19.22712415
OL49	377527.186	2126434.637	79.83483069	19.22772009
OL50	377583.070	2126457.630	79.83536081	19.22793123
OL51	377669.876	2126448.940	79.83618708	19.22785796
OL52	377765.094	2126393.639	79.83709633	19.22736404
OL53	377826.279	2126366.605	79.83768006	19.22712347
OL54	377839.800	2126392.503	79.83780703	19.22782183
OL55	377794.822	2126444.106	79.83737590	19.22851388
OL56	377782.139	2126520.782	79.83725039	19.22851388
OL57	377816.255	2126553.638	79.83757282	19.22881281
OL58	377857.879	2126553.025	79.83796880	19.22880978
OL59	377862.151	2126624.315	79.83800490	19.22945419
OL01	376498.407	2122998.165	79.82526530	19.19660709
OL06	376466.051	2123327.348	79.82493646	19.19957948
OL09	376502.100	2123527.421	79.82526648	19.20138945
L54A	377839.791	2126375.860	79.83780800	19.22720791
LL25	376595.794	2124549.533	79.82609203	19.21063053

Legend
 ● DGPS Surveyed Points
 — Area Proposed for Diversion



Geographic Coordinate System - WGS84 Datum (UTM 44 N)
 Tagged to nearest SOI GCP