



निर्गत के लिए नहीं NOT FOR EXPORT

OPEN SERIES
MAP

No. F42K6

Scale 1:50,000

F42K1 (41J/1)	F42K5 (41J/5)	F42K9 (41J/9)
F42K2 (41J/2)	F42K6 (41J/6) Jāmnagar GUJARAT	F42K10 (41J/10)
F42K3 (41J/3)	F42K7 (41J/7)	F42K11 (41J/11)

भारतीय सर्वेक्षण विभाग

SURVEY OF INDIA

1st Edition 2011.

Price : Rs. 77/-

CONVENTIONAL SYMBOLS

Express highway, with toll; with bridge, with distance stone		20
Roads, metalled, according to importance		
Roads, double cartway, according to importance		
Unmetalled road, Cart-track, Pack-track with pass, Foot-path		
Streams, with track in bed, underfed, Canal		
Dams, masonry or rock-filled, earthwork, Weir		
River, dry with water channel, with island & rocks, Tidal river		
Submerged rocks, Shoal, Swamp, Floods		
Wells, lined, unlined, Tube-well, Spring, Tanks, perennial, dry		
Embankments, road or rail, tank, Broken ground		
Railways, broad gauge, double, single with station, under constn.		
Railways, other gauges, double, single with distance stone, do.		
Mineral line or tramway, Kds, Cutting with tunnel		
Contours with sub-features, Rocky slopes, Cliffs		
Sand features (1)Flat, (2)Sand-hill(permanent), (3)Sand-shifting		
Towns or Villages, inhabited, deserted, Fort		
Huts, permanent, temporary, Tower, Anticities		
Temple, Chhatra, Church, Mosque, Jagah, Tomb, Graves		
Lighthouse, Lightship, Buoy, lighted, unlighted, Anchorage		
Mine, Vise on trails, Grass, Scrub		
Palms, palms, other, Plantain, Conifer, Bamboo, Other trees		
Areas, cultivated, wooded, Surveyed tree		
Boundary, international		
state demarcated, undemarcated		
district, subdivision, tahsil or taluk, forest		
Boundary pillars, surveyed, unlocated		
Heights, trigonometric station, point, approximate		
Bench-mark, geodetic, survey, canal		
Post office, Telegraph Office, Overhead tank		
Rail house or inspection bungalow, Circuit house, Police station		
Camping ground, Forest, reserved, protected		
Spaced names, administrative, locality or tribal		
Hospital, Dispensary, Veterinary, Hospital / Dispensary		
Aerodrome, Helipad, Tourist site		
Power line, with pylons surveyed, with poles unsurveyed		

NOTES :-

Heights and Contours have not been shown.
Tanks shown dry. In this area usually contain water from July to February.
A relative height, e.g., 5r, represents the approximate height, in metres, between the top and bottom of a steep slope.
International boundary in the adjoining sheet in Administrative Index has not been shown.
Cultivation is periodic and dependent on rainfall.

COMPILATION INDEX

A. Compiled from 1:25,000. Surveyed during 1986-87.
Updated for major details during 2003-04



Projection - UTM Datum - WGS 84

Magnetic Variation from True North about 1° West in 2005.
(Decreasing by about 1" annually)

1:50,000

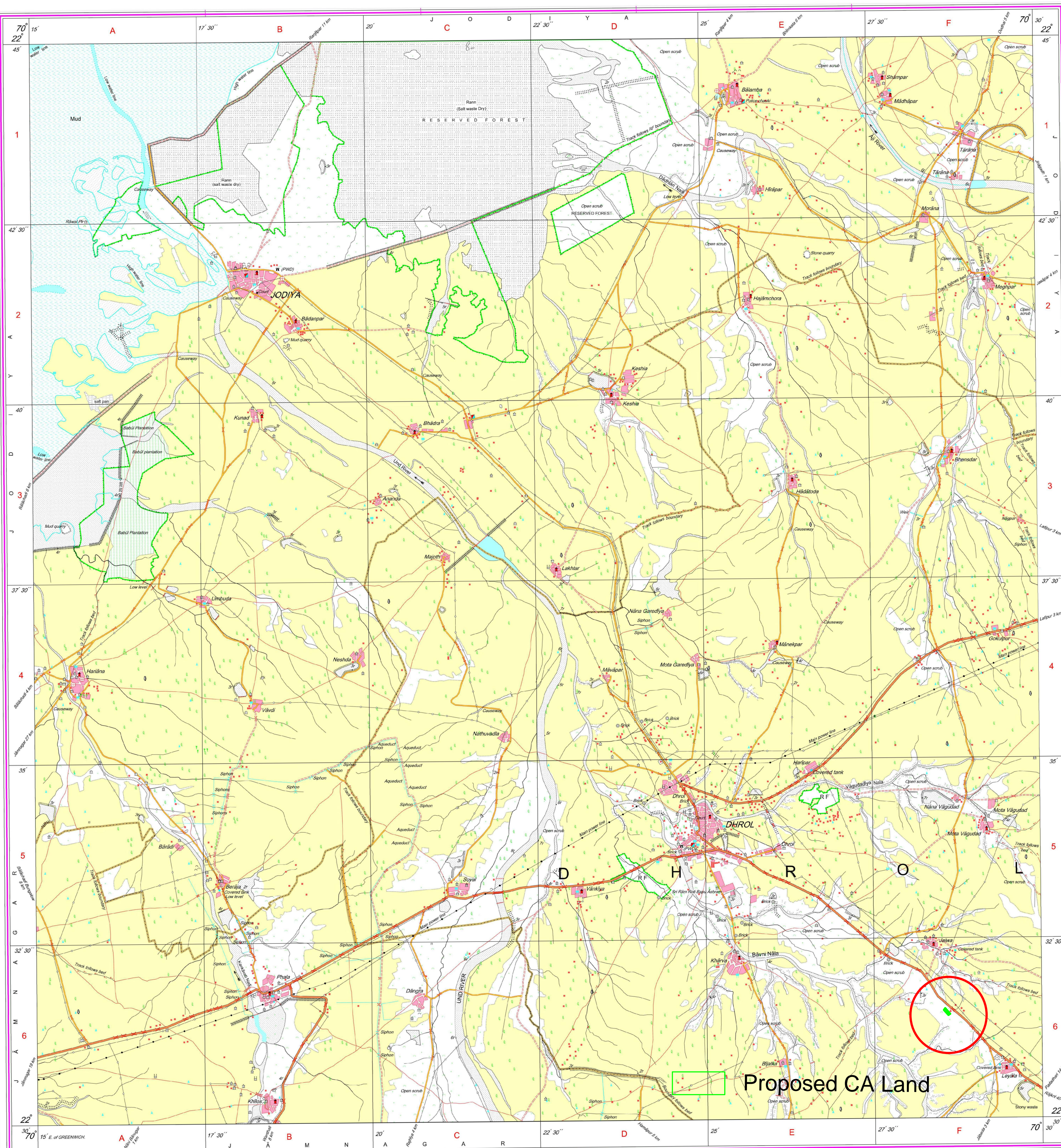
500 m to 1 cm 2 cm to 1 km

For further details about this map, please contact

Director
Gujarat, Damán & Diu Geo-Spatial Data Centre
Survey of India, sector-10(A)
Gandhinagar.

WEBSITE - www.surveyofindia.gov.in

Reproduction in whole or part by any means is prohibited
without the written permission of Survey of India, the
National Mapping Agency.



REG. No. -SPD D/11 (GDAD GDC-150,000)

भारत के महामहोदय, सर्वेक्षण विभाग, नई दिल्ली, के निर्देशन में प्रकाशित,
Published under the direction of Swami Subba Rao, B.E., Surveyor General of India,
Survey of India, Hāmbarakā Estate, Post Box No. 57, Dehra Dun-248001 (Uttarakhand)
Department of Science & Technology, Government of India.

PRINTED AT THE SOUTHERN PRINTING GROUP OF SURVEY OF INDIA