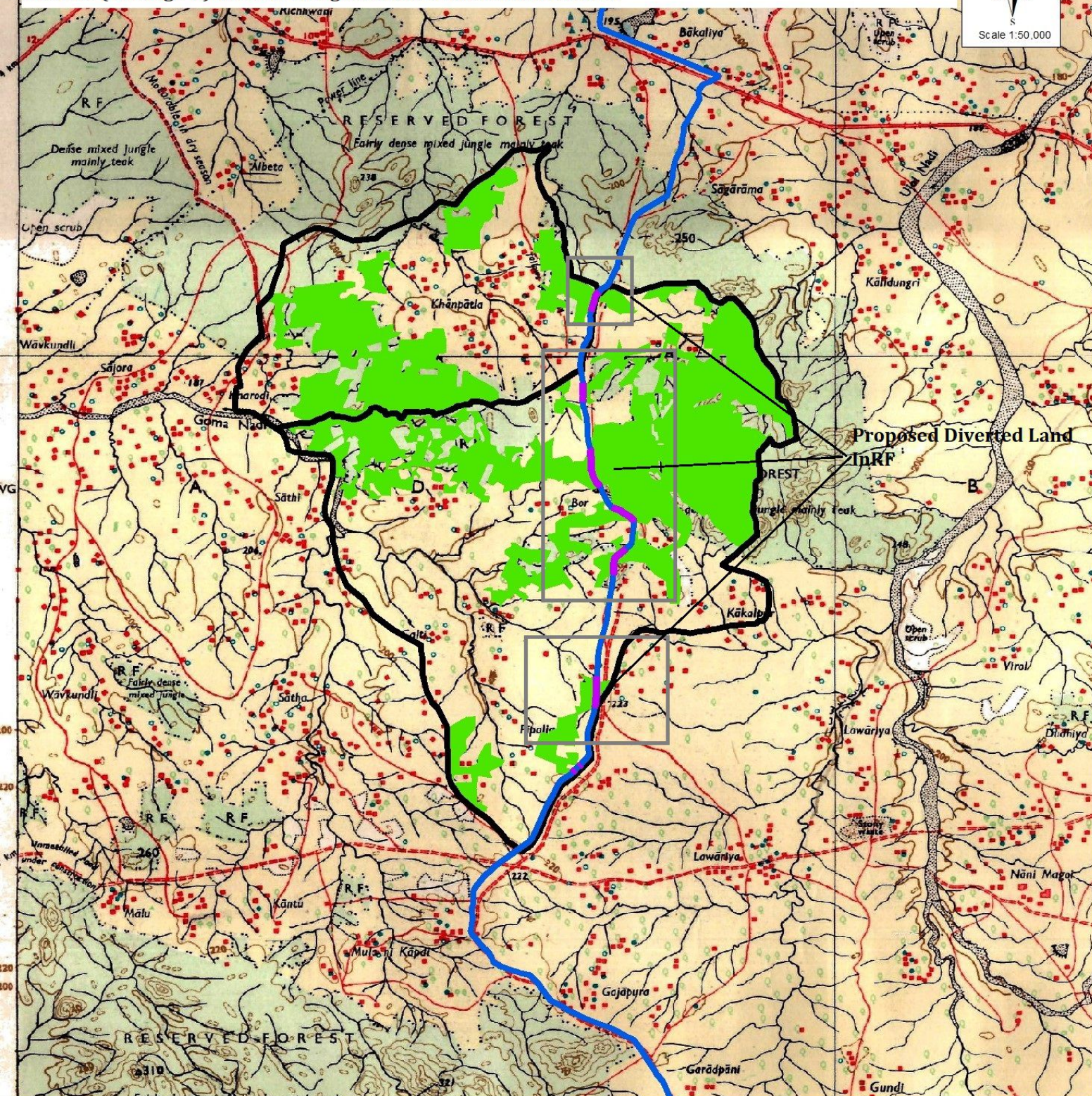
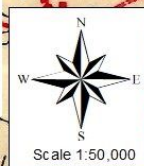


Diversion of 0.2215 Ha. Reserved forest land for the laying of 500mm/600 mm/700 mm Dia. Underground Pipeline under the project on Chhotaudepur District Bulk Pipeline water supply scheme (Package-3) Taluka: Ghoghamba in Panchmahal District.



REFERENCE

Proposed Diverted Land Location

Dy.Executive Engineer
Public Health Sanitary Sub Division
Gujarat W/S.& Sewage Board
Chhotaudepur

Executive Engineer
Public Health Works Division
Chhotaudepur