

No. E43V16

Scale 1:50,000

E43V11 (47P/11)	E43V15 (47P/15)	Bijapur KARNATAKA E43W3 (56D/3)
E43V12 (47P/12)	E43V16 (47P/16) Bagalkot KARNATAKA	E43W4 (56D/4)
D43D9 (48M/9)	D43D13 (48M/13) Gadag KARNATAKA	D43E1 (57A/1) Koppal KARNATAKA

1 Raichur, KARNATAKA.

भारतीय सर्वेक्षण विभाग

SURVEY OF INDIA

1st Edition 2010.

Price : Rs. 70/-

CONVENTIONAL SYMBOLS

Express highway, with toll, with bridge, with distance stone	...	27
Roads, metalled, according to importance	...	
Roads, double cartway, according to importance	...	
Unmetalled road, Cart-track, Pack-track with pass, Foot-path	...	
Streams, with track in bed, undefined, Canal	...	
Dams, masonry or rock-filled, earthwork, Weir	...	
River, dry with water channel, with island & rocks, Tidal river	...	
Submerged rocks, Shoal, Swamp, Reeds	...	
Wells, lined, unlined, Tube-well, Spring, Tanks, perennial, dry	...	
Embankments, road or rail, tank, Broken ground	...	
Railways, broad gauge, double, single with station, under constr	...	
Railways, other gauges, double, single with distance stone, do	...	
Mineral line or tramway, Kln. Cutting with tunnel	...	
Contours with sub-features, Rocky slopes, Cliffs	...	
Sand features: (1) flat (2) sand-hills (permanent) (2) dunes (shifting)	...	
Towns or Villages, inhabited, deserted, Fort	...	
Huts, permanent, temporary, Tower, Antiquities	...	
Temple, Chhatra, Church, Mosque, Idgah, Tomb, Graves	...	
Lighthouse, Lightship, Buoys, lighted, unlighted, Anchorage	...	
Mine, Vitr on trellis, Grass, Scrub	...	
Palms, palmyra, other Plantain, Conifer, Bamboo, Other trees	...	
Areas, cultivated, wooded, Surveyed tree	...	
Boundary, International	...	
state, demarcated, undemarcated	...	
district, subdivision, tahsil or thuk, forest	...	
Boundary pillars: surveyed, unlocated, village trijunction	...	
Heights, triangulated, station, point, approximate	...	
Bench-mark: geodetic, tertiary, canal	...	
Post office, Telegraph office, Overhead tank	...	
Rest house or Inspection bungalow, Circuit house, Police station	...	
Camping ground, Forest, reserved, protected	...	
Spaced nomenclature: administrative, locality or tribal	...	
Hospital, Dispensary, Veterinary, Hospital / Dispensary	...	
Aerodrome, Helpad, Tourist site	...	
Power line, with pylons surveyed, with poles unsurveyed	...	

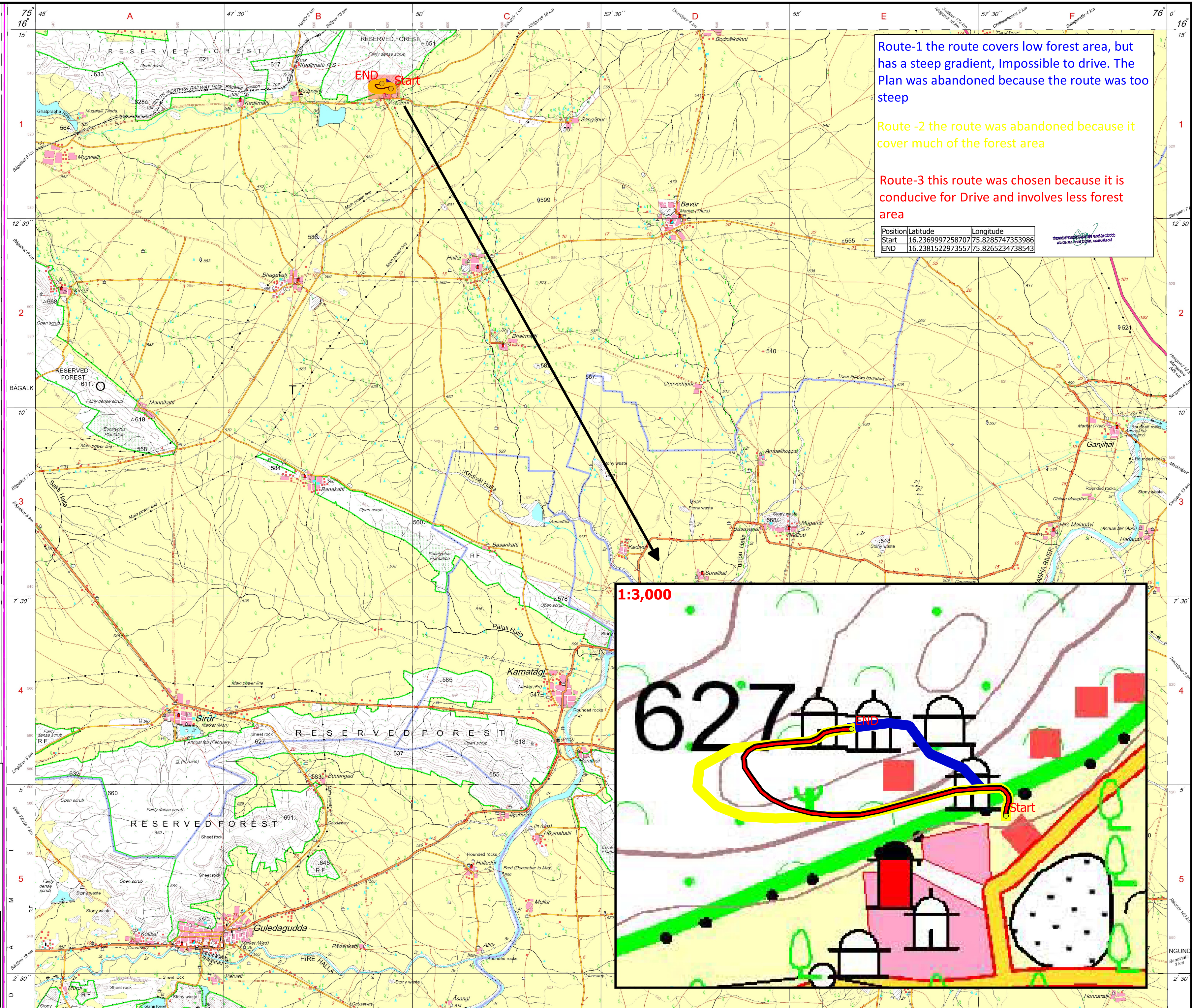
Map showing location of alternative examined in Diversion of Forest area of Forest Sy. No.145 of Achanuru village Bagalkot Taluk and District

Paper Size-A2



Legend

- Start and End Points
- Route-1 abandoned
- Route-2 abandoned
- Route-3 Selected



Route-1 the route covers low forest area, but has a steep gradient, Impossible to drive. The Plan was abandoned because the route was too steep

Route -2 the route was abandoned because it cover much of the forest area

Route-3 this route was chosen because it is conducive for Drive and involves less forest area

Position	Latitude	Longitude
Start	16.2369997258707	75.8285747353986
END	16.2381522973557	75.8265234738543