



No. G43S15
Scale 1:50,000

G43S10 (45D/10)	G43S14 (45D/14) Sirahi RAJASTHAN	G43T2 (45H/2) Udaipur RAJASTHAN
G43S11 (45D/11)	G43S15 (45D/15)	G43T3 (45H/3)
Banās Kāntha GUJARAT	G43S16 (45D/16)	G43T4 (45H/4) Sābar Kāntha GUJARAT

1 Mehāsna, GUJARAT.
2 Disputed, GUJARAT, RAJASTHAN.

भारतीय सर्वेक्षण विभाग

SURVEY OF INDIA

1st Edition 2011.

Price : Rs. 70/-

CONVENTIONAL SYMBOLS

Express highway with toll; with bridge; with distance stone	
Roads, metalled, according to importance	
Roads, double carriageway, according to importance	
Unmetalled road; Cart-track; Pack-track with pass; Foot-path	
Streams; with track in bed; underfed; Canal	
Dams; masonry or rock-filled; earthwork; Weir	
River; dry with water channel; with island & rocks; Tidal river	
Submerged rocks; Shoal; Swamp; Reeds	
Wells; lined; unlined; Tube-well; Spring; Tanks; perennial; dry	
Embankments; road or rail; bank; Broken ground	
Railways; broad gauge; double; single with distance stone; do	
Mineral line or tramway; Kin; Cutting with tunnel	
Contours with sub-features; Rocky slopes; Cliff	
Sand features (1 ft. (2 yards) high) (permanent) (shifting)	
Towns or Villages; inhabited; deserted; Fort	
Huts; permanent; temporary; Tower; Antiquities	
Temples; Chhatra; Church; Mosque; Idgah; Tomb; Graves	
Lighthouse; Lightship; Buoy; lighted; unlighted; Anchorage	
Mine; Vine on trellis; Grass; Scrub	
Palms; papyrus; other; Plantain; Conifer; Bamboo; Other trees	
Areas; cultivated; wooded; Surveyed trees	
Boundary; international	
state; demarcated; undemarcated	
district; subdivision; taluk or block; forest	
Boundary pillars; surveyed; unlocated	
Height; triangulated; station; point; approximate	
Benchmark; geodetic; tertiary; serial	
Post office; Telegraph office; Overhead tank	
Rest house or inspection bungalow; Circuit house; Police station	
Camping ground; Forest; reserved; protected	
Spaced names; administrative; locality or tribal	
Aerodrome; Helipad; Tourist site	
Power line; with pylons surveyed; with poles unsurveyed	

REFERENCE

NH 14 National Highway No. 14

NOTES :-

Heights are in metres and above mean sea level.
Contours are approximate.
A relative height, e.g., 8', represents the approximate height, in metres, between the top and bottom of a steep slope.
A relative height, e.g., 50', against a well, indicates its total depth in metres.

COMPILATION INDEX

A. Surveyed during 1959-60. Updated for major details during 2005-06.



Projection - UTM Datum - WGS 84

Magnetic Variation from True North about 0° in 2005.
(increasing by about 1° East annually)

1:50,000

Scale 1:50,000
500 m to 1 cm
2 cm to 1 km

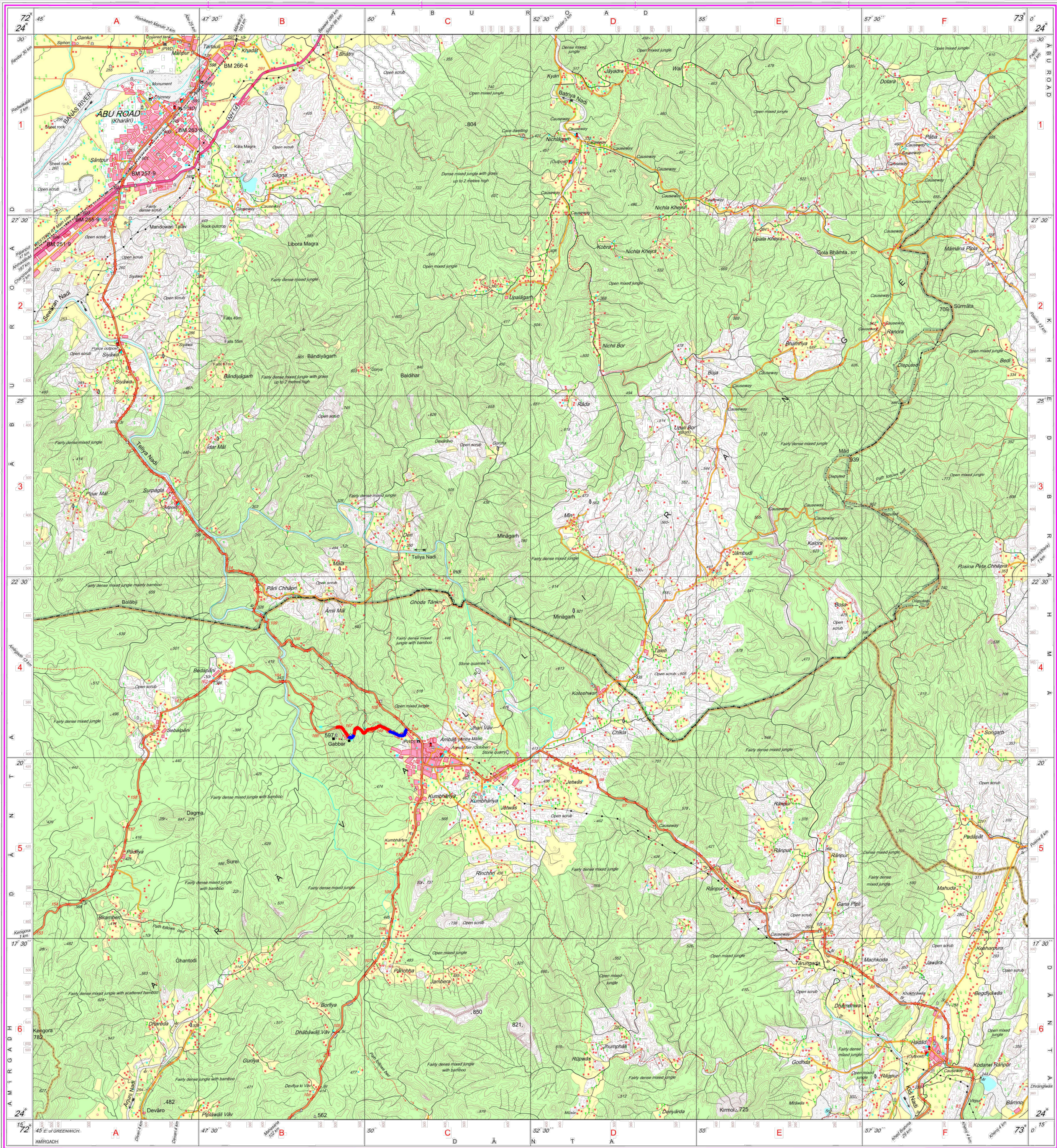
CONTOUR INTERVAL 20 METRES

For further details about this map, please contact
Director
Gujarat, Damán & Diu Geo-Spatial Data Centre
Survey of India, Sector -10 (A)
Gandhinagar.

WEBSITE - www.surveyofindia.gov.in

Reproduction in whole or part by any means is prohibited
without the written permission of Survey of India, the
National Mapping Agency.

GOVERNMENT OF INDIA COPYRIGHT, 2011.



REG. No. : SPO D11 (SDAC GDC-150,000)

	RESERVE FOREST
	PROTECTED FOREST

DEPUTY EXECUTIVE ENGINEER
R & S. SUB DIV. (STATE)
AMBALI

EXECUTIVE ENGINEER
R & S. SUB DIV. (STATE)
PALANPUR

भारत के सर्वेक्षण, सर्वेक्षण, सर्वेक्षण, सर्वेक्षण
Published under the direction of Swarna Subba Rao, B.E., Surveyor General of India,
Survey of India, Hāthbarkala Estate, Post Box No.37, Dehra Dun-248001 (Uttarakhand)
Department of Science & Technology, Government of India.

PRINTED AT THE SOUTHERN PRINTING GROUP OF SURVEY OF INDIA.