

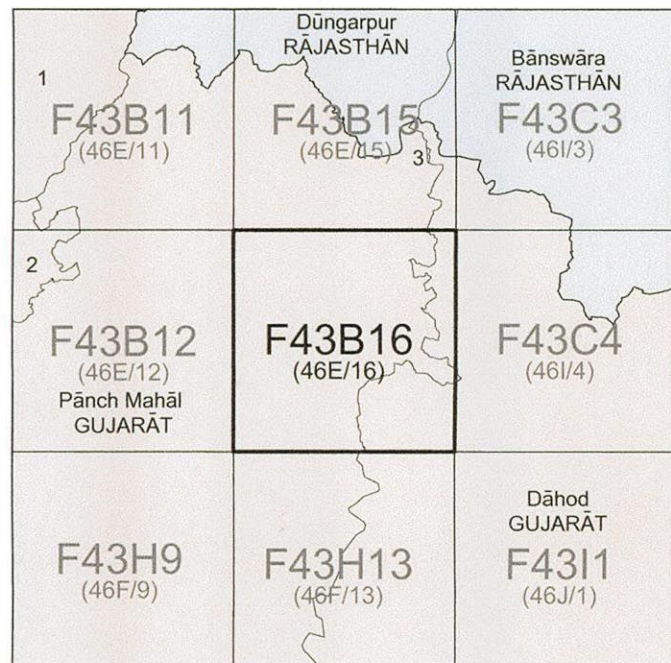


सर्वेक्षण के लिए नहीं NOT FOR EXPORT

OPEN SERIES  
MAP

No. F43B16

Scale 1:50,000



भारतीय सर्वेक्षण विभाग

SURVEY OF INDIA

1st Edition 2011.

Price : Rs. 70/-

CONVENTIONAL SYMBOLS



Proposed OFC Route

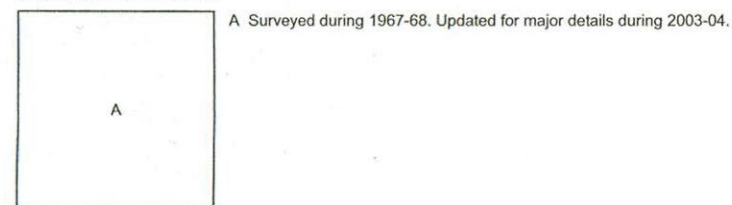
REFERENCE

SW Story waste.

NOTES :-

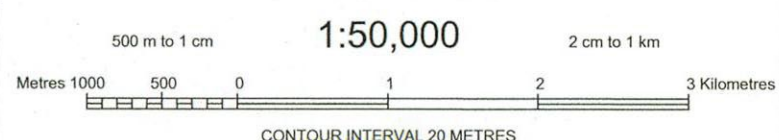
Heights are in metres and above Indian mean sea level.  
Contours are approximate.  
A relative height, e.g., 50', represents the approximate height, in metres, between the top and bottom of a steep slope.  
The triangulated heights and contours in this sheet have not been adjusted to the heights of the spirit-levelled bench-marks and may not be strictly in accordance with them.  
Unmetalled roads and cart-tracks in this sheet are generally motorable in dry season.  
Tanks, shown dry, in this area usually contain water from July to April.  
Cultivation is periodic and dependent on rainfall.

COMPILATION INDEX



Projection - UTM Datum - WGS 84

Magnetic Variation from True North about 1° West in 2005.  
(Decreasing by about 1' annually).



For further details about this map, please contact  
Director  
Gujarat, Daman & Diu Geo-Spatial Data Centre  
Survey of India, Sector-10(A)  
Gandhinagar.

WEBSITE - www.surveyofindia.gov.in

Reproduction in whole or part by any means is prohibited  
without the written permission of Survey of India, the  
National Mapping Agency.

GOVERNMENT OF INDIA COPYRIGHT, 2011.



REG. No. SPG D11 (GD&D GDC-1:50,000).

भारत के सर्वेक्षक, सर्वेक्षण विभाग, भारत, के दिशेन से प्रकाशित।  
Published under the direction of Swarna Subba Rao, B.E. Surveyor General of India,  
Survey of India, Hathi Bakala Estate, Post Box No.37, Dehra Dun-248001 (Uttarakhand)  
Department of Science & Technology, Government of India.

PRINTED AT THE SOUTHERN PRINTING GROUP OF SURVEY OF INDIA.



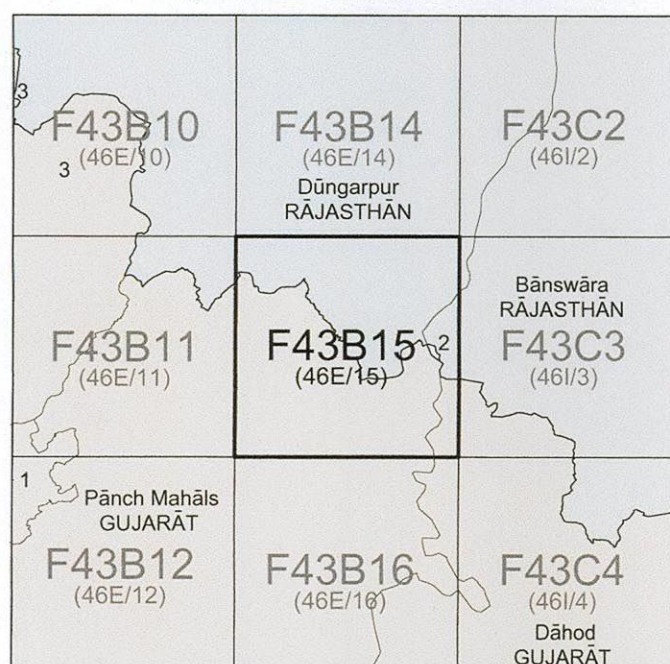


नियंत्रित के लिए नहीं NOT FOR EXPORT

OPEN SERIES  
MAP

No. F43B15

Scale 1:50,000



1 Kheda, GUJARAT. 2 DISPUTED. 3 Sabar Kantha, GUJARAT.

भारतीय सर्वेक्षण विभाग

SURVEY OF INDIA

1st Edition 2011.

Price : Rs. 70/-

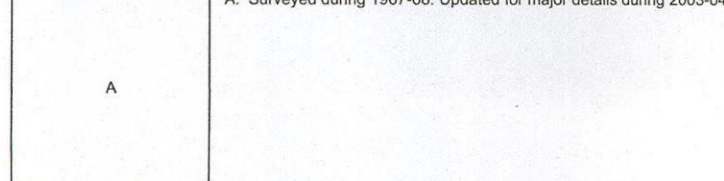
### CONVENTIONAL SYMBOLS



### NOTES :-

Heights are in metres and above Indian mean sea level.  
Contours are approximate.  
A relative height,  $\Delta$ , represents the approximate height, in metres, between the top and bottom of a steep slope.  
The triangulated heights and contours in this sheet have not been adjusted to the heights of the spot-levelled bench-marks and may not be strictly in accordance with them.  
The kilometre stone numbers along the roads are shown in slant type, e.g., '5' whereas milestone numbers are shown in upright type, e.g., '5'.  
Tanks, shown dry, in this area usually contain water from July to March.  
Mahi River is generally fordable from October to June.  
The state boundary between Gujarat and Rajasthan states has been surveyed as pointed out by the local officials on the ground, but has not been verified by the Government of Rajasthan.

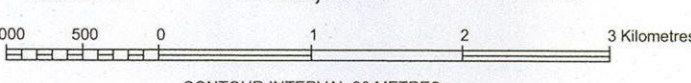
### COMPILATION INDEX



Projection - UTM Datum - WGS 84

Magnetic Variation from True North about 1° West in 2005.  
(Decreasing by about 1" annually)

1:50,000



CONTOUR INTERVAL 20 METRES

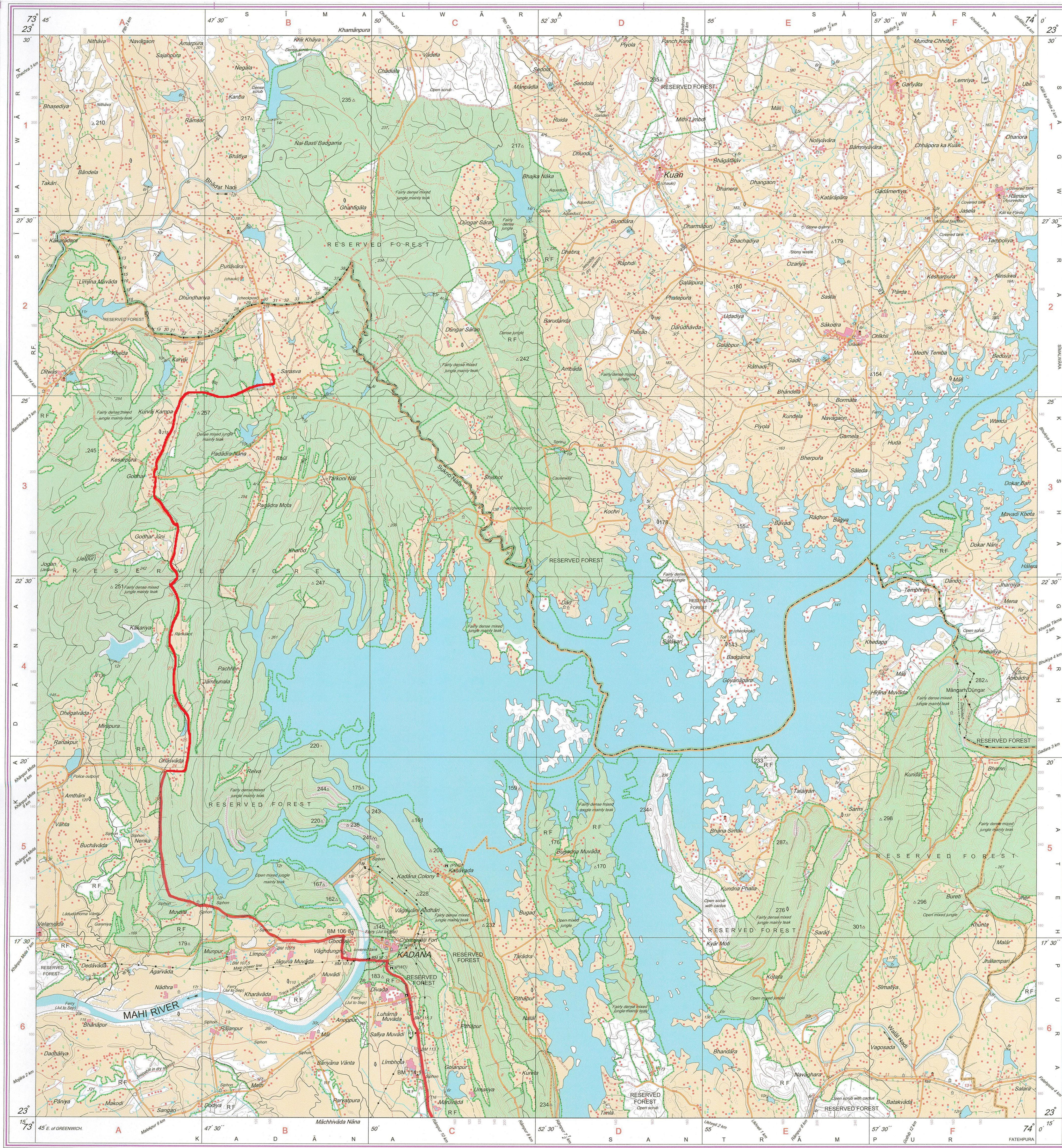
For further details about this map, please contact

Director  
Gujarat, Damam & Diu Geo-Spatial Data Centre  
Survey of India, Sector-10 (A)  
Gandhinagar.

WEBSITE - [www.surveyofindia.gov.in](http://www.surveyofindia.gov.in)

Reproduction in whole or part by any means is prohibited  
without the written permission of Survey of India, the  
National Mapping Agency.

GOVERNMENT OF INDIA COPYRIGHT, 2011.



REG. No.

-SPG D11 (GD40, GDC-150,000)-

भारत के नालसर्वेक्षण, सर्वेक्षण एवं, बी.टी.डी. के नियंत्रण में प्रकाशित,  
Published under the direction of Swarna Subba Rao, B.E., Surveyor General of India,  
Survey of India, Hattibarkala Estate, Post Box No. 37, Dehra Dun-248001 (Uttarakhand)  
Department of Science & Technology, Government of India.

PRINTED AT THE SOUTHERN PRINTING GROUP OF SURVEY OF INDIA.