



Scale 1:50,000

2 Bhavnagar, GUJARĀT.
3 Ahmadābād, GUJARĀT.



Price - Rs. 201-292

Spines lightly; with small teeth; with distance stone
Pipes, melted; according to importance
Rivers, double cartilaginous; according to importance
Unmistaken road. Cut back. Pick-back with pass. Foot-path
Shrubs; with trunk in bed, undressed. Canal
Dance; masonry or rock-faced; according to West
Rivers, or with water channel; with island & mole. Tidal river
Submerged mole. Shoal. Swamp. Reeds.
Will; lined; unfired. Tube-will. Spring. Tanka; pavilion; dyke
Embarcadero road or rail; tank. Breken ground
Riftways, broad gorges; double; depths with struts; under covers
Mineral, or gorges; double; depth with struts; stone; do
Rivers, free of travertine. Kiu. Gelling with barrel
Canals with sub-passes. Rocky shoals. Cuts
Sand features (1) Hot. (Ground-hummock) (2) Sand (3) Hot
Towns of Villages inhabited; devoted. Fort
Hill; permanent; temporary. Tower. Aqueducts
Temple. Chihai. Chuan. Moze. Jishi. Tien. Gorge
Lighthouse. Lighthouse. Lighted, upright. Anchorage
Mine. Vine on traffic. Grass. Shore
Palm; palms; other. Plantain. Cassia. Bamboo. Other trees
Arms; cultivated; wooded. Surveyed trees
Boundary. International
... state; demarcated; undemarcated
... sub-division; half; or thick; forest
Boundary; partly; surveyed; embanked
Highways; straightened; station; post; approximate
Benchmark; geodesic; literary; canal
Post office. Overland track
Resting house or inspection barracks. Canal. House. Police station
Camp ground. Forest; reserved; protected
Spoon nests; administrative; locality or hotel
Hospital. Dispensary. Veterinary Hospital / Dispensary
Amdurmo. Heligod. Tourist site
Peace line with peaks surveyed; with points ascertained

Proposed OFC

NH 84 National Highway No. 84

Heights are in metres and above Indian mean sea level.
Contours are approximate.
A relative height, e.g., 5, represents the approximate height, in metres, between the top and bottom of a steep slope.
Tanks, shown dry, in this area usually contain water from July to September.
A relative height, e.g., 8, marked along a canal, indicates the height of the top of the canal embankment above the adjacent country.

A. Surveyed during 1986-87. Updated for major details during 2001-02 and 2005-06.

Magnetic Variation from True North about 1° West in 2005.
(Decreases by about $1'$ annually)

1:50,000

CONTOUR INTERVAL 20 METRES

For further details about this map, please contact

Gujarāt, Darnān & Dīu Geo-Spatial Data Centre
Survey of India, Sector-10(A)
Gāndhīnagar.

WEBSITE - www.surveyofindia.gov.in

Reproduction in whole or part by any means is prohibited without the written permission of Survey of India, the National Mapping Agency.

© GOVERNMENT OF INDIA COPYRIGHT, 2011.

REG. No. -SPG 0'11 (GN&O GDC-1-50,000)

गुजरात, दमन व दीव / Gujarat, Daman & Diu
भूस्थानिक आंकड़ा केंद्र / Geo Spatial Data Centre
भारतीय सर्वेक्षण विभाग / Survey of India

भारत के महाराज्यशासक, लार्ज सुब्बा राव, बीएड, के निदेशन में प्रकाशित,
Published under the direction of Swarna Subba Rao, B.E., Surveyor General of India,
Survey of India, Hathi Bakula Estate, Post Box No. 37, Dehra Dun-248001 (Uttarākhānd)
Department of Science & Technology, Government of India.

PRINTED AT THE SOUTHERN PRINTING GROUP OF SURVEY



निर्यात के लिए नहीं NOT FOR EXPORT

OPEN SERIES
MAP

No. F42L7

Scale 1:50,000

Map of Gujarat showing 12 constituencies for the 2019 Lok Sabha elections. The map is divided into 12 numbered regions, each with a name and a number. The regions are:

- 1. Rajkot GUJARAT (F42L2, 41N/2)
- 2. F42L6 (41N/6)
- 3. F42L10 (41N/10)
- 4. Surendranagar GUJARAT (F42L7, 41N/7)
- 5. F42L11 (41N/11)
- 6. Amdadabad GUJARAT (41N/11)
- 7. F42L4 (41N/4)
- 8. Rajkot GUJARAT (41N/4)
- 9. F42L8 (41N/8)
- 10. F42L12 (41N/12)
- 11. Bhavnagar GUJARAT (41N/12)
- 12. F42L3 (41N/3)

1 Amreli, GUJARĀT

भारतीय सर्वेक्षण विभाग

SURVEY OF INDIA

1st Edition 2011.

Price: Rs. 118/—

CONVENTIONAL SYMBOLS

Spurs, highway; with toll; with bridge; with distance stone		20
Roads, railway; according to importance		750
Roads, double carriageway; according to importance		
Unmetalled road; Car-track; back track with pass. Foot-path		
Streams; with track in bed; unbedded. Canal		
Dams; masonry or rock-filled; earwork. Weir		
River; dry with water channel; with island & rocks. Tidal river		
Submerged rocks. Shoal. Swamp. Reeds		
Wells; lined; unlined. Tube-well. Spring. Tanks; perennial; dry		
Embankments; road or rail; tank. Broken ground		
Railways, broad gauge; double; single with station; under constr		750
Railways, other gauge; double; single with distance stone; do.		
Mineral line or tramway. Kilm. Cutting with tunnel		
Contours with sub-features. Rocky slopes. Cliffs		
Sand features (1)flat, (2)sand-hills(permanent), (3)dunes(shifting)		
Towns or Villages: inhabited; deserted. Fort.		
Huts; permanent; temporary. Tower. Antiquities		Clear
Kiln; permanent. Church. Mosque. Gighn. Tomb. Graves		
Lighthouse. Lightship. Buoys; lighted; unlighted. Anchorage		
Mine. Vine on trellis. Grass. Scrub.		
Palms; palmyra; other. Plantation. Conifer. Bamboo. Other trees		
Areas: cultivated; wooded. Surveyed tree		
Boundary, international		
state; demarcated; undemarcated		
district; subdivision; taluk or iluk; forest		
Boundary parcels; surveyed; unlocated		
Heights, triangulated; station; point approximate		△200 △200 △200
Bench-mark; geodetic; tertiary; canal		BM 63.3 BM 63.3 BM 63.3
Post office. Overhead tank		
Camping house or Inspection Bungalow; Civil house. Police station		
Rest house. Forest: reserved; protected		R F P F
Spaced names: administrative; locality or tribal		KIKRI NAGA
Hospital. Dispensary. Veterinary; Hospital / Dispensary		
Aerodrome. Helipad. Tourist site		
Power line: with pylons surveyed; with poles unsurveyed		

REFERENCE

NH 8 A. National Highway No. 8 A

NOTES :-

Heights are in metres as above Indian mean sea level.
Contours are approximate.
The triangulated heights and contours in this sheet have not been adjusted to the heights of the spirit-levelled bench-marks and may not be strictly in accordance with them.
A relative height, \pm δ represents the approximate height, in metres, between the top and bottom of a steep slope.
Tanks, shown dry in this area usually contain water from July to November.
Cultivation is periodic and dependent on rainfall.

COMPILATION INDEX

A. Surveyed during 1966-67. Updated for major details during 2005-06

Projection - UTM Datum - WGS 84

Magnetic Variation from True North about $\frac{1}{4}^{\circ}$ West in 2005.
(Decreasing by about $1'$ annually)

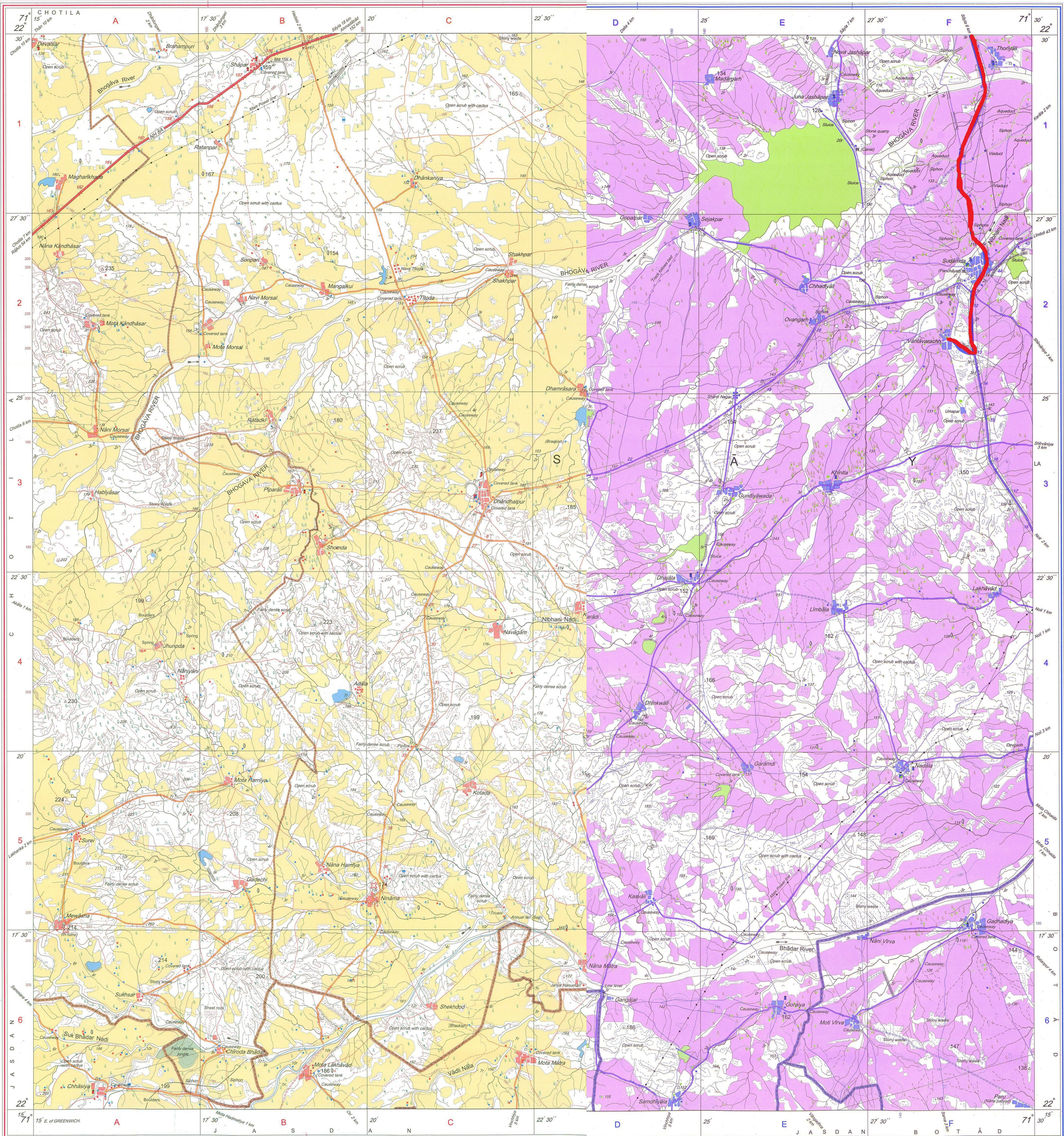
1:50,000

0 1
CONTOUR INTERVAL 20 METRES

For further details about this map, please contact
Director
Arārāt, Damān & Diu Geo-Spatial Data Centre
Survey of India, Sector-10(A)
Gāndhīnagar.

WEBSITE - www.surveyofindia.gov.in

Reproduction in whole or part by any means is prohibited without the written permission of Survey of India, the National Mapping Agency.



REG. No. 904-SPG D '12 (G D & D GDC-1:50,000)-1508 '15

भारत के महासर्वेयक राजेन्द्र मणि त्रिपाठी, एम.एस.सी. (फिजिक्स), पी.जी.डिप्लोमा (कार्टो) (आई.टी.सी. नीदरलैण्ड्स) के निदेशन में प्रकाशित.
Published under the direction of Rajendra Mani Tripathi, M.Sc. (Physics), P.G. Diploma (Carto) (I.T.C., The Netherlands) Surveyor General of India
Survey of India, Hāthibarkala Estate, Post Box No. 37, Dehra Dūr - 248001 (Uttārākhānd),
Department of Science & Technology, Government of India.

PRINTED AT THE SOUTHERN PRINTING GROUP OF SURVEY OF INDIA