

EAST NIMAR & WEST NIMAR DISTRICTS.

Surveyed 1977-78.

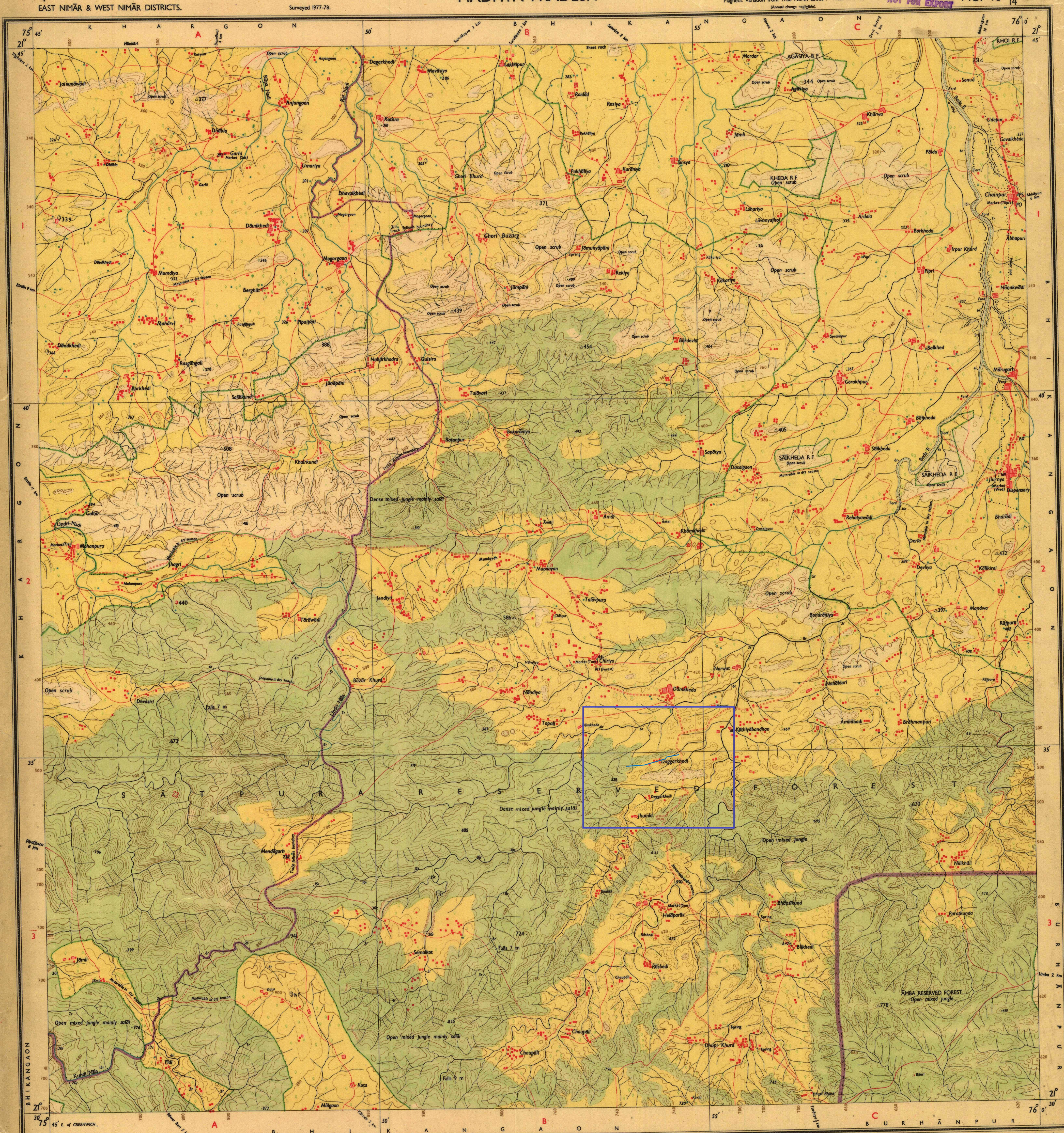
मध्य प्रदेश MADHYA PRADESH

FIRST EDITION

Magnetic Variation from True North about 1° West in 1975.
(Annual change negligible)

भारत के लिए नहीं
NOT FOR EXPORT

No. 46
O
14



Res. No. 4725 D/81 (D.O. 10-1-50/000) 6.200.82

Roads, metalled: according to importance: distance stone	20
unmetalled: do. do. bridge	20
Cart-track: Pack-track and pass: Foot-path with bridge	20
Bridges: with piers: without: Causeway: Ford or Ferry	20
Streams: with track in bed: undefined: Canal	20
Dams: masonry or rock-filled earthwork: Weir	20
River banks: shelving: steep: 3 to 6 metres: over 6 metres	20
dry with water channel: with island & rocks: Tidal river	20
Submerged rocks: Shoal: Swamp: Reeds	20
Wells: lined: unlined: Tube-well: Spring: Tanks: perennial: dry	20
Embankments: road or rail: tank: Broken ground	20
Railways: broad gauge: double: single with station under station	20
other gauges: do. do. with distance stone: do.	20
Mineral line or tramway: Telegraph line: Casing with tunnel	20
Contours: with sub-features: Rocky slopes: Cliffs	20
Sand features: flat: dunes: hills and dunes: steeply sloping dunes	20

Index to Sheets
46 0 46 1 46 2
46 3 46 4 46 5
46 6 46 7 46 8

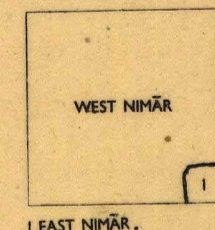
500 m to 1 cm
Metres 1000 500 0 1 2 3 4 5 6 7 Kilometres

1: 50,000
HEIGHTS & CONTOURS IN METRES
CONTOUR INTERVAL 20 METRES

Water features are shown in blue where they generally contain water.
Cultivated areas are coloured yellow.
The exterior boundaries of areas of Reserved or Protected Forests are shown by green ribbons.

Contours are approximate.
A. means height, B. represents the approximate height, in metres, between the top and bottom of a steep slope.
Wooded areas are coloured green. Scattered trees and other vegetation are in green, but prominent surveyed trees are in black.

Administrative Index



Towns or Villages: inhabited: deserted: Fort	20
Huts: permanent: temporary: Tower: Antiquities	20
Temples: Chhatra: Church: Mosque: Ishan: Tomb: Graves	20
Lighthouse: Lightship: Boys: lighted: unlighted: Anchorage	20
Mine: Vine on trellis: Grass: Scrub	20
Palms: palmyra: other: Plantain: Conifer: Bamboo: Other trees	20
Boundary: international	20
state: demarcated: undemarcated	20
district: subdivided: sub-division: village: trijunction	20
Boundary pillars: surveyed: unsurveyed: village: trijunction	20
Height: triangulated: station: point: approximate	200 200 200
Bench-mark: Geodetic: tertiary: point	BM 633 BM 633 BM 633
Post office: Telegraph office: Combined office: Police station	PO 70 PTO 70
Bungalows: dak or traveller: inspection: Rest-house	OB 18 (Canal) RH Forest
Circuit house: Camping ground: Forest: reserved: protected	CH 85 RF 85
Spaced names: administrative: locality or tribal	KIKRI KIKRI

In Edition 1981.
(Previous Edition on 1-inch scale: 1970).

REFER TO THIS MAP AS : 1:50,000
SHEET 46 O/14 FIRST EDITION

INDIA भारत

GOVERNMENT OF INDIA COPYRIGHT, 1981
BHARAT
EDUCATIONAL STORES
CHHIPA TANK MEERUT PH. : 543218, 23912