

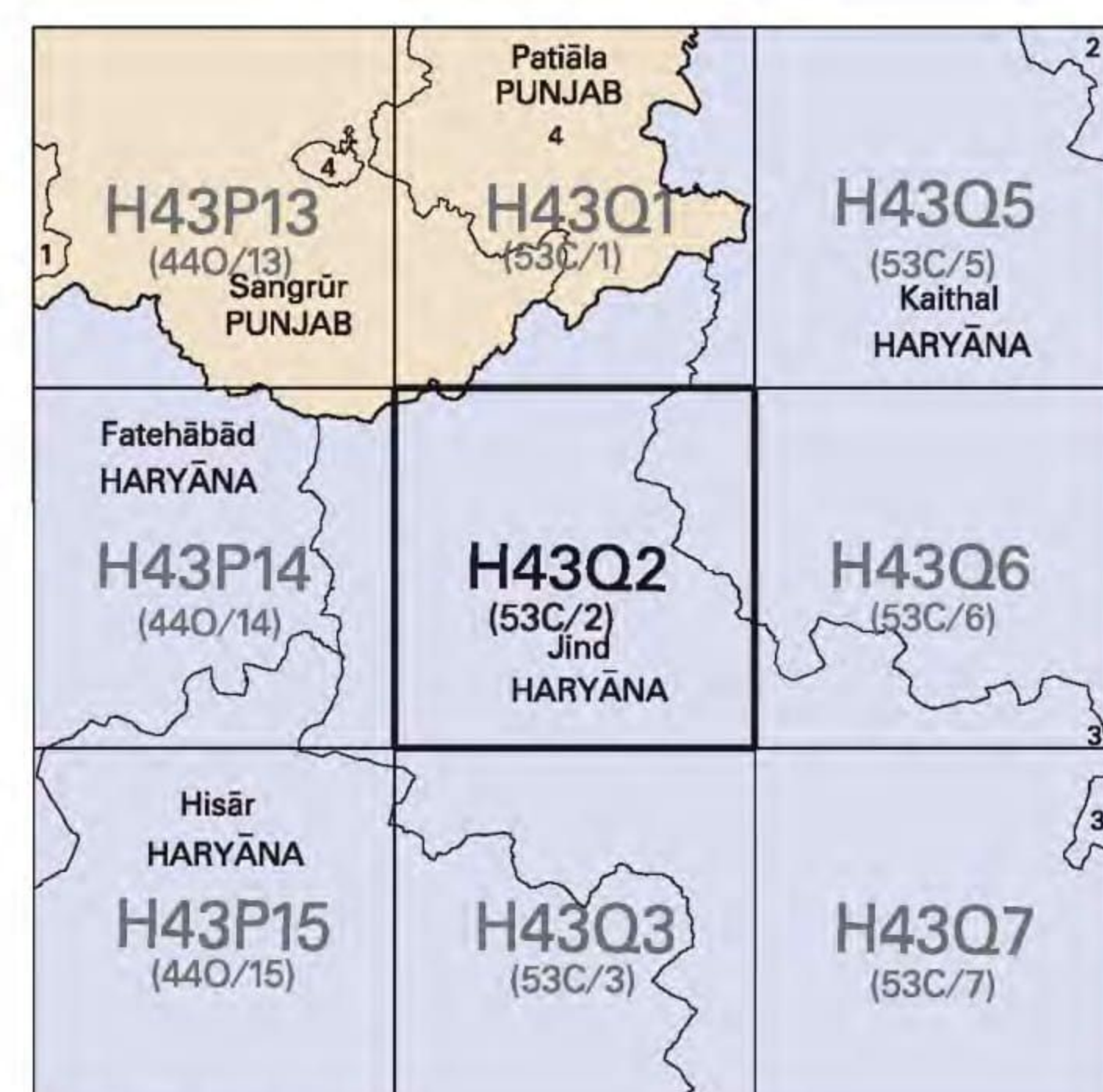


निर्मात के लिए नहीं NOT FOR EXPORT

OPEN SERIES MAP

No. H43Q2

Scale 1:50,000



1. Miana, PUNJAB.
2. Kurukshetra, HARYANA.
3. Karnal, HARYANA.

भारतीय सर्वेक्षण विभाग SURVEY OF INDIA

1st Edition 2009. Price : Rs. 50/-

CONVENTIONAL SYMBOLS

- Express Highway: with toll; with bridge; with distance stone
- Roads, metalled: according to importance
- Roads, double cartway: according to importance
- Unmetalled road, Cart-track, Pack-track with pass, Foot-path
- Streams: with track in bed; undefined Canal
- Dam: masonry or rock-filled; earthwork; Wall
- River: dry with water channel; with island & rocks; Tidal river
- Submerged rocks, Shoal, Swamp, Reeds
- Wells: lined; unfixed; Tube-well; Spring; Tanks: permanent; dry
- Embankments: road or rail; tank; Broken ground
- Railways, broad gauge: double; single with station under constr.
- Railways, other gauges: double; single with distance stone; do.
- Mineral line or tramway, Kin, Cutting with tunnel
- Contours with sub-features, Rocky slopes, Cliffs
- Sand features: (Fixed, Dunes, Hills (permanent), (Seasonal))
- Towns or Villages: inhabited; deserted; Fort
- Huts: permanent; temporary; Tower, Antiquities
- Temples, Chhatris, Churches, Mosques, Igahs, Tombs, Graves
- Lighthouses, Lightships, Buoys: lighted; unlighted; Anchorage
- Mines, Vins on trellis, Grass, Scrub
- Palms; palmry; other, Plantain, Conifer, Bamboo, Other trees
- Areas: cultivated; wooded; Surveyed tree
- Boundary, International: state; demarcated; undemarcated
- Boundary, International: district; subdivision; tahsil or taluk; forest
- Boundary pillars: surveyed; unlocated; village trijunction
- Height, triangulated; station; point; approximate
- Bench-mark: geodetic; tertiary; canal
- Post office, Telegraph office, Overhead tank
- Rest house or inspection bungalow, Circuit house, Police station
- Camping ground, Forest: reserved; protected
- Spaced names: administrative; locality or tribal
- Hospital, Dispensary, Veterinary; Hospital / Dispensary
- Aerodrome, Helipad, Tourist site
- Power line: with pylons surveyed; with poles unsurveyed

REFERENCE

NV 65 National Highway No. 65

NOTES

- Contours are approximate. Heights are in metres and above Indian mean sea level.
- A relative height, e.g. 3m marked along a canal, indicates the height of the top of the canal embankment above the adjacent country.
- Tube-wells are numerous throughout the sheet, only the important ones have been shown.
- Tanks shown dry, in this area usually contain water from March to December.
- A relative height, e.g. 3m, marked against a well, indicates its depth in metres.
- Distance stones along canal are 1000 feet apart and every existing firm stone is shown.
- All cart-tracks and unmetalled roads along canals are motorable throughout the year. Permission to use these is required from the irrigation authorities. Other cart-tracks are generally motorable in dry season.
- The triangulated heights and contours in this sheet have not been adjusted to the heights of spirit-levelled bench-marks and may not be strictly in accordance with them.
- The state boundary between Haryana and Punjab states has been surveyed as pointed out by the local officials on the ground, but has not been verified by the Governments concerned.
- 3,000-acre re-vegetation zones of Bharu Dam Project Survey based on Origin 20° 00' N, 75° 15' E with their numbers are shown as tertiary bench-marks thus: N 12 1/2, BM 224.1.

COMPILATION INDEX

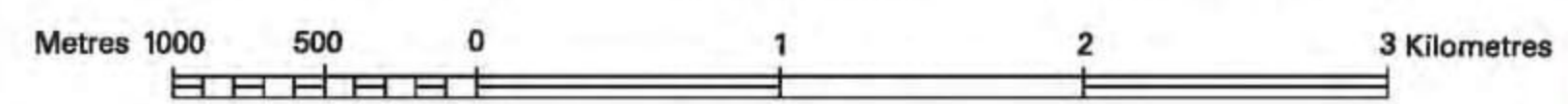
- A. Compiled from 1:25,000 survey, 1987-88.
- Updated for major details during 2005-06.

Projection - UTM Datum - WGS 84

Magnetic Variation from True North about 3° East in 2005.

(Increasing by about 1' annually).

Scale 1:50,000



CONTOUR INTERVAL 10 METRES

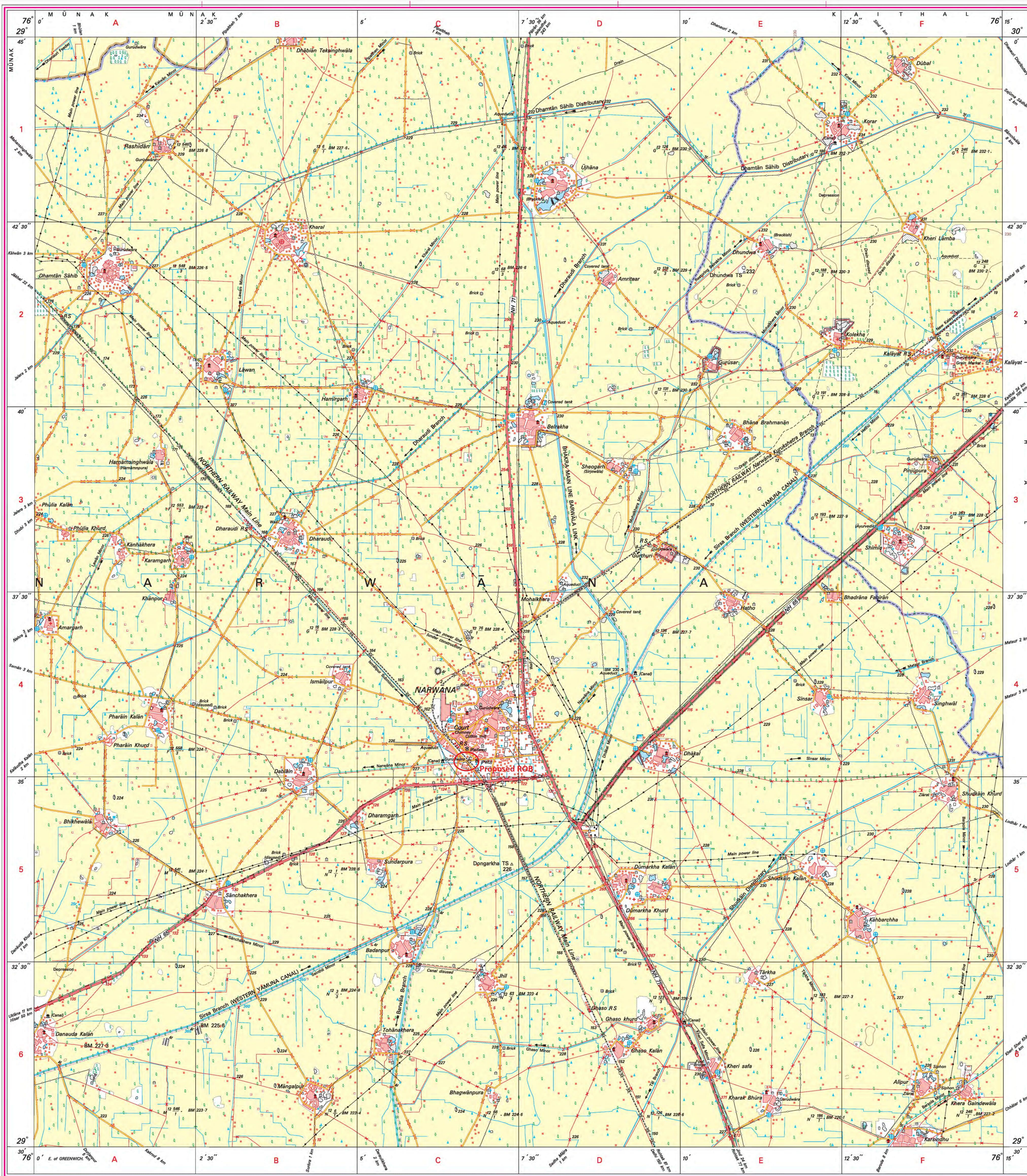
For further details about this map, please contact

Director, Punjab and Chandigarh Geo-Spatial Data Centre, Survey of India, Sector 32 A, Chandigarh, Fax : 0172 - 2606916

WEBSITE - www.surveyofindia.gov.in

Reproduction in whole or part by any means is prohibited without the written permission of Survey of India, the National Mapping Agency.

GOVERNMENT OF INDIA COPYRIGHT, 2009.



REG. No. - WPI D 6 (P & C GDC-150,000)

भारत के सर्वेक्षक के नियंत्रण में प्रकाशित, Published under the direction of Surveyor General of India, Hishibarkala Estate, Post Box No. 37, Dehra Dun - 248001 (Uttarakhand), Department of Science & Technology, Government of India.

PRINTED AT THE WESTERN PRINTING GROUP OF SURVEY OF INDIA.