

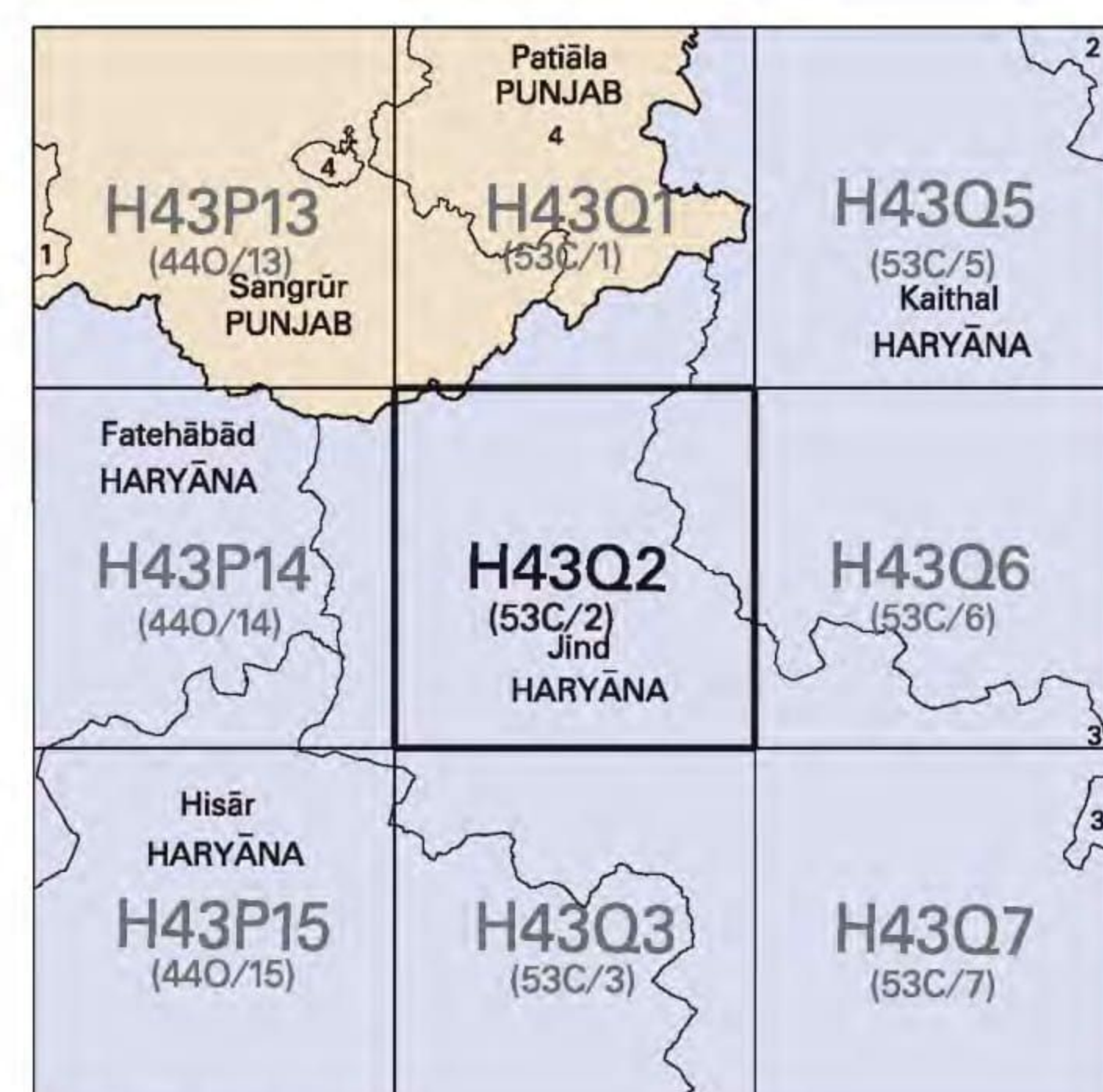


निर्गत के लिए नहीं NOT FOR EXPORT

OPEN SERIES MAP

No. H43Q2

Scale 1:50,000



1. Miana, PUNJAB.
2. Kurukshetra, HARYANA.
3. Karnal, HARYANA.

भारतीय सर्वेक्षण विभाग SURVEY OF INDIA

1st Edition 2009. Price : Rs. 50/-

CONVENTIONAL SYMBOLS

Express Highway: with toll; with bridge; with distance stone	
Roads, metalled: according to importance	
Roads, double cartway: according to importance	
Unmetalled road, Cart-track, Pack-track with pass, Foot-path	
Streams: with track in bed; undefined Canal	
Dam: masonry or rock-filled; earthwork; Wall	
River: dry with water channel; with island & rocks; Tidal river	
Submerged rocks, Shoal, Swamp, Reeds	
Wells: lined; unfired; Tube-well; Spring; Tanks: permanent; dry	
Embankments: road or rail; tank; Broken ground	
Railways, broad gauge: double; single with station under constr.	
Railways, other gauges: double; single with distance stone; do.	
Mineral line or tramway, Kin. Cutting with tunnel	
Contours with sub-features, Rocky slopes, Cliffs	
Sand features: (Fixed, Dunes, Hills (permanent), (Disappearing))	
Towns or Villages: inhabited; deserted; Fort	
Huts: permanent; temporary; Tower, Antiquities	
Temples, Chhatris, Churches, Mosques, Igahs, Tombs, Graves	
Lighthouses, Lightships, Buoys: lighted; unlighted; Anchorage	
Mines, Vins on trellis, Grass, Scrub	
Palms; palm-trees; other, Plantain, Conifer, Bamboo, Other trees	
Areas: cultivated; wooded; Surveyed tree	
Boundary, International	
Boundary, International: state; demarcated; undemarcated	
Boundary, International: district; subdivision; tahsil or taluk; forest	
Boundary pillars: surveyed; unlocated; village trijunction	
Height, triangulated; station; point; approximate	
Bench-mark: geodetic; tertiary; canal	
Post office, Telegraph office, Overhead tank	
Rest house or inspection bungalow, Circuit house, Police station	
Camping ground, Forest: reserved; protected	
Spaced names: administrative; locality or tribal	
Hospital, Dispensary, Veterinary; Hospital/Dispensary	
Aerodrome, Helipad, Tourist site	
Power line: with pylons surveyed; with poles unsurveyed	

REFERENCE

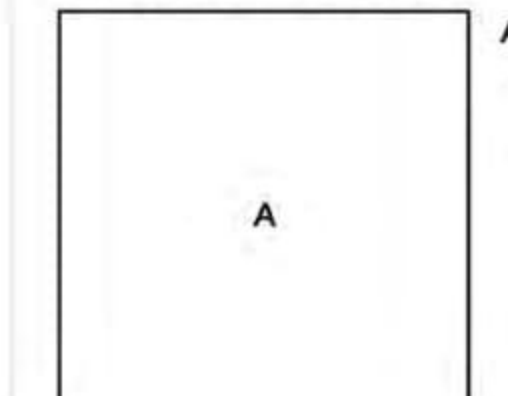
NV 65 National Highway No. 65

NOTES

Contours are approximate. Heights are in metres and above Indian mean sea level. A relative height, e.g. 3m marked along a canal, indicates the height of the top of the canal embankment above the adjacent country. Tube-wells are numerous throughout the sheet, only the important ones have been shown. Tanks shown dry, in this area usually contain water from March to December. A relative height, e.g. 3m, marked against a well, indicates its depth in metres. Distance stones along canal are 1000 feet apart and every existing firm stone is shown. All cart-tracks and unmetalled roads along canals are motorable throughout the year. Permission to use these is required from the irrigation authorities. Other cart-tracks are generally motorable in dry season. The triangulated heights and contours in this sheet have not been adjusted to the heights of spirit-levelled bench-marks and may not be strictly in accordance with them. The state boundary between Haryana and Punjab states has been surveyed as pointed out by the local officials on the ground, but has not been verified by the Governments concerned. 3,000-acre re-creation stones of Bharu Dam Project Survey based on Origin 20° 00' N, 75° 15' E with their numbers are shown as tertiary bench-marks thus: N 12 1/2, BM 224.1.

COMPILATION INDEX

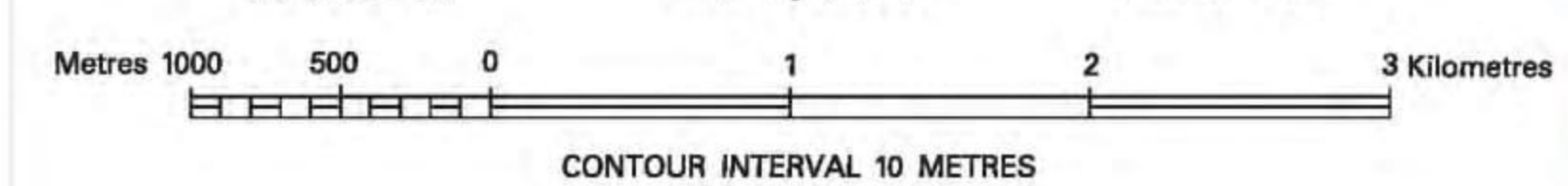
A. Compiled from 1:25,000 survey, 1987-88. Updated for major details during 2005-06.



Projection - UTM Datum - WGS 84

Magnetic Variation from True North about 3° East in 2005. (Increasing by about 1' annually).

1:50,000



CONTOUR INTERVAL 10 METRES

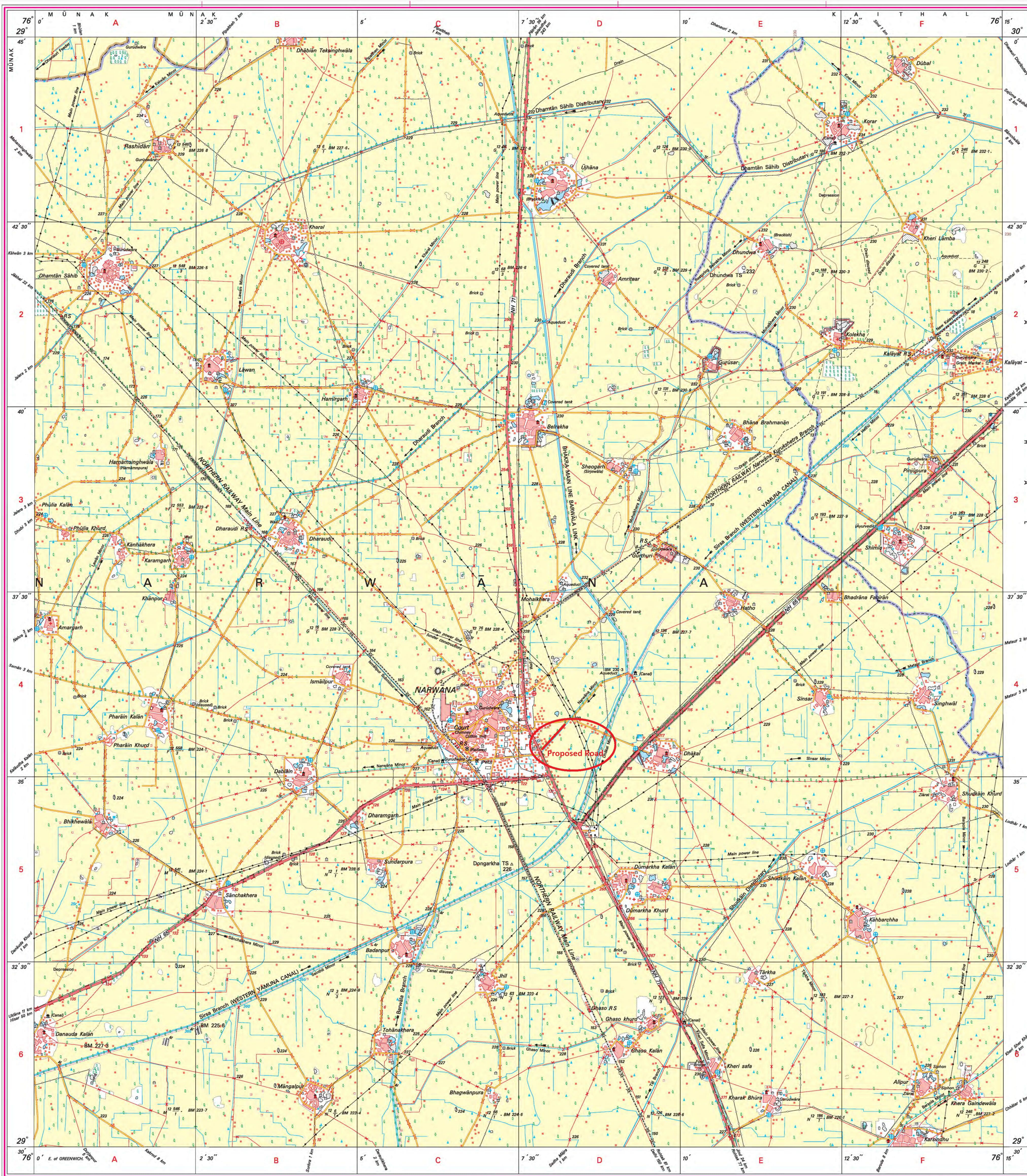
For further details about this map, please contact

Director  
Punjab and Chandigarh Geo-Spatial Data Centre  
Survey of India, Sector 32 A  
Chandigarh,  
Fax : 0172 - 2606916

WEBSITE - www.surveyofindia.gov.in

Reproduction in whole or part by any means is prohibited without the written permission of Survey of India, the National Mapping Agency.

GOVERNMENT OF INDIA COPYRIGHT, 2009.



REG. No. - WPI D/b (P & C GDC-150,000)

भारत के सर्वेक्षक के नियंत्रण में प्रकाशित,  
Published under the direction of Surveyor General of India,  
Survey of India, Hishibarkala Estate, Post Box No. 37, Dehra Dun - 248001 (Uttarakhand),  
Department of Science & Technology, Government of India.

PRINTED AT THE WESTERN PRINTING GROUP OF SURVEY OF INDIA.