



Scale 1:50,000

F42K2 (41J/2)	F42K6 (41J/6)	F42K10 (41J/10)
F42K3 (41J/3)	F42K7 (41J/7) 2 Jhinnagar GUJARAT	F42K11 (41J/11) 1 Rajkot GUJARAT
F42K4 (41J/4)	F42K8 (41J/8)	F42K12 (41J/12)

भारतीय सर्वेक्षण विभाग

SURVEY OF INDIA

1st Edition 2011.

Price : Rs. 70/-

CONVENTIONAL SYMBOLS

Roads, metalled; with toll; with bridge; with distance stone
 Roads, metalled; according to importance
 Roads, double carriageway; according to importance
 Unmetalled road. Car-track. Pack-track with pass. Foot-path
 Streams; with track in bed; undefined Canal
 Dams; masonry or rock-filled; earthwork. Weir
 River; dry with water channel; with island or rocks. Tidal river
 Submerged rocks. Shoal. Swamp. Reeds
 Wells; lined; unlined. Tube-well. Spring. Tunnels; perennial; dry
 Embankments road or of rail; track. Broken ground
 Railways, broad gauge; double; single with station; under construction
 Mineral line or tramway; kiln. Cutting with tunnel
 Contours with sub-features. Rocky slopes. Cliffs
 Sand features (1) flat. (2) sand-hills (permanant). (3) dunes (shifting)
 Towns or villages; inhabited; deserted. Fort
 Huts of permanent; temporary. Tower. Antiquities
 Temple. Chhatrai. Church. Mosque. Iglaah. Tomb. Graves
 Lighthouse. Lightship. Buoy; lighted; unlighted. Anchorage
 Mine. Vine on trellis. Grass. Scrub
 Palms; palmyra; other. Plantain. Coconut. Bamboo. Other trees
 Areas; cultivated; wooded. Surveyed tree
 Boundary, international
 state; demarcated; undemarcated
 district; subdivision; tahsil or taluk; forest
 Boundary pillars; surveyed; unlocated
 Heights, triangulated station; point approximate
 Bench-mark; geodetic; tertiary; canal
 Post office. Overhead tank
 Rest house or inspection bungalow. Circuit house. Police station
 Camping ground. Forest; reserved; protected
 Spaced names: administrative; locally or tribal
 Hospital. Dispensary. Veterinary Hospital / Dispensary
 Aerodrome. Helipad. Tourist site
 Power line; with pylons surveyed; with poles unsurveyed

NOTES :-

A relative height, e.g., .8, represents the approximate height, in metres, between the top and bottom of a steep slope.

COMPILATION INDEX

A. Compiled from 1:25,000, Surveyed during 1986-87. Updated for major details during 2005-06.

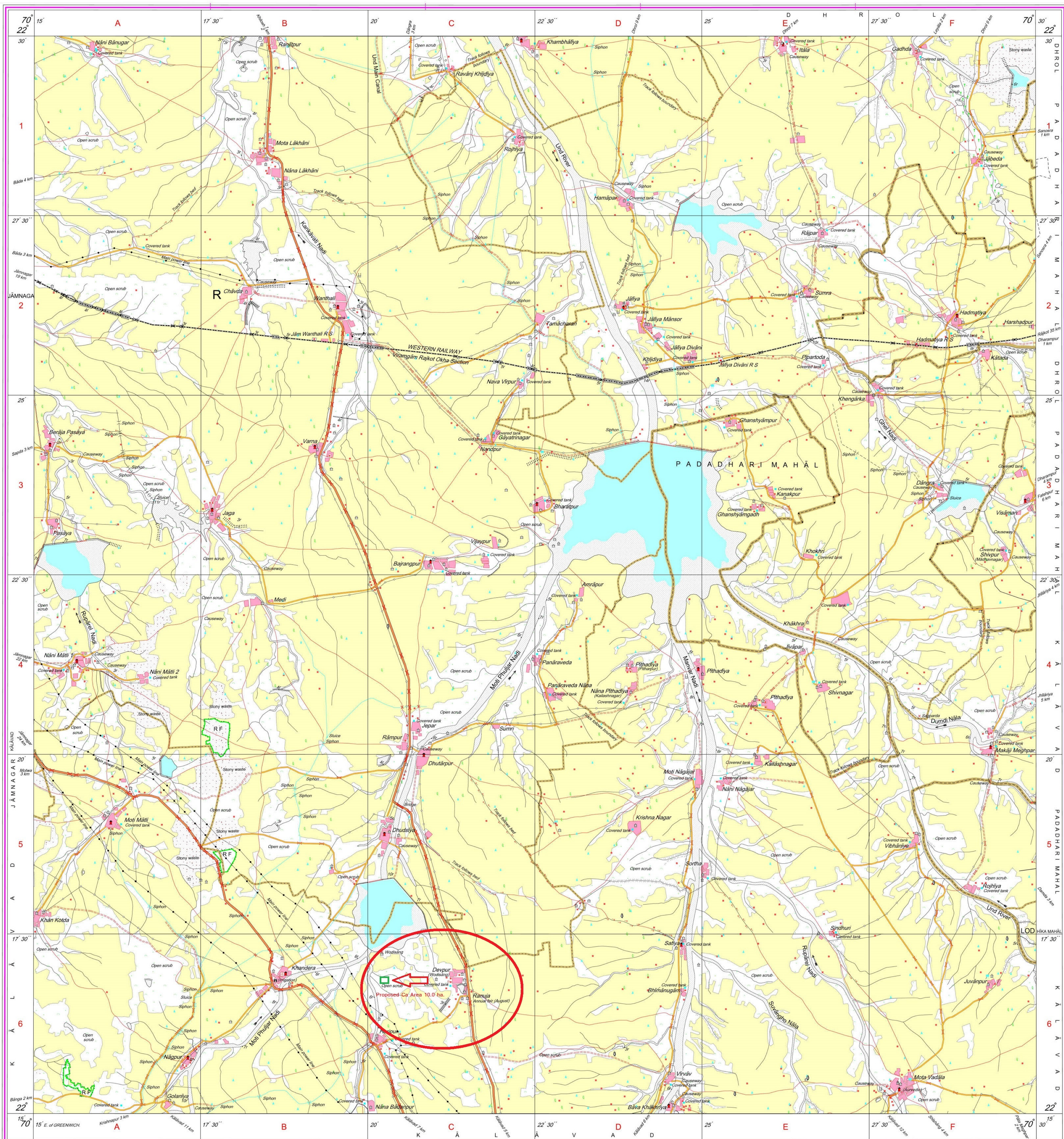
Projection - UTM Datum - WGS 84

Magnetic Variation from True North about $1\frac{1}{4}^{\circ}$ West in 2005.
(Decreasing by about $1'$ annually).

1:50.000

For further details about this map, please contact
Director
Varanasi, Varanasi & District Geo-Spatial Data Centre
Survey of India, Sector-10 (A)
Gandhinagar.

WEBSITE - www.surveyofindia.gov.in



REG. No. -SPG D'11 (GD & D GDC-1:50,000)

भारत के महासर्वेक्षक, स्वर्ण सुब्बा राव, बी०ई०, के निदेशन में प्रकाशित,
Published under the direction of Swarna Subba Rao, B.E., Surveyor General of India,
Survey of India, Hāthibarkala Estate, Post Box No.37, Dehra Dūn-248001 (Uttarākhānd)
Department of Science & Technology, Government of India.

PRINTED AT THE SOUTHERN PRINTING GROUP OF SURVEY OF INDIA