

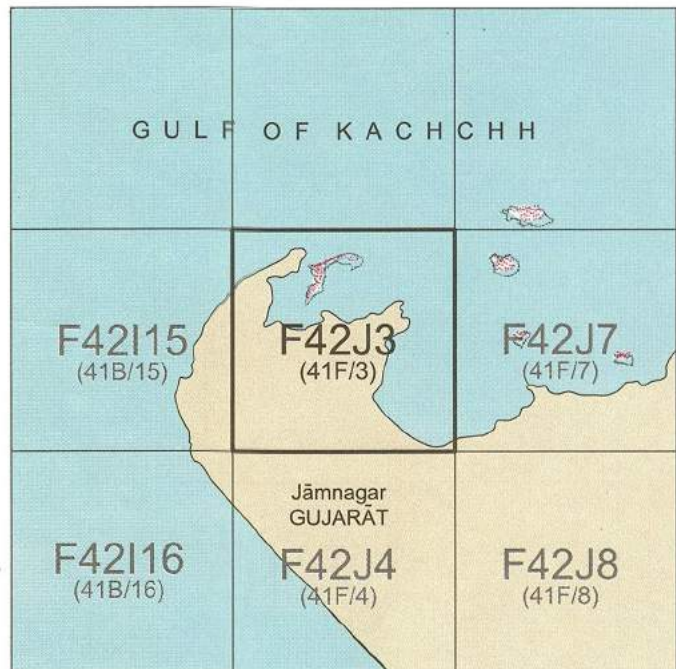


निर्गल के लिए नहीं NOT FOR EXPORT

OPEN SERIES
MAP

No. F42J3

Scale 1:50,000



भारतीय सर्वेक्षण विभाग

SURVEY OF INDIA

1st Edition 2011.

Price: Rs. 118/-

CONVENTIONAL SYMBOLS

- Express highway with toll with bridge with distance stone
- Roads, metalled according to importance
- Unmetalled road, Cart track, Push track with pass, Foot path
- Streams with track in bed, underfoot, Canal
- Dams, masonry or rock-filled, earthwork, Wall
- River dry with water channel, with island & rocks, Tidal river
- Submerged rocks, Shoal, Swamp, Reeds
- Wells, lined, unlined, Tube well, Spring, Tanks, perennial, dry
- Embankments, road or rail tank, broken ground
- Railways, broad gauge, double, single with station, under station
- Railways, other gauges, double, single with distance stone, 60
- Mineral line or tramway, Rtn. Cutting with tunnel
- Contours with sub-features, Rocky slopes, Cliffs
- Sand features (T.M., Dunes, hillocks, dunes) (Shifting)
- Towns or Villages, inhabited, deserted, Fort
- Hill, permanent, temporary, Tower, Antenna, etc.
- Temples, Chhatra, Church, Mosque, Light, Tomb, Graves
- Lighthouse, Lightship, Buoy, lighted, unlighted, Anchorage
- Mini. Vine on hills, Grass, Scrub
- Palms, palmira, other, Plantain, Coconut, Bamboo, Other trees
- Areas cultivated, wooded, surveyed line
- Boundary, international
- state, demarcated, undemarcated
- district, subdivision, tahsil or taluk, forest
- Boundary pillars surveyed, unlocated
- Heights, triangulated station, point, approximate
- Bench mark, geodetic, levelling, aneroid, BM 43-3, BM 43-4
- Post office, Overhead tank
- Rest house or inspection bungalow, Circuit house, Police station
- Camping ground, Forest, reserved, protected
- Spaced names, administrative, locality or tribal
- Hospital, Dispensary, Veterinary, Hospital / Dispensary
- Aerodrome, heliport, Tourist site
- Power line, with pylons surveyed, with poles unsurveyed

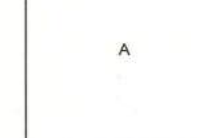
CA Area

NOTES -

Heights and Contours have not been shown.
A relative height, e.g., 20, represents the approximate height, in metres, between the top and bottom of a steep slope.
Tanks, shown dry, in this area usually contain water from July to December.
Collection is periodic and dependent on rainfall.

COMPILATION INDEX

A. Compiled from 1:25,000. Surveyed 1985-86. Updated for major details during 2005-06.



Projection - UTM Datum - WGS 84

Magnetic Variation from True North about 1° West in 2005.
(Decreasing by about 1° annually).

1:50,000

Metres 1000 500 250 0 250 500 1000 Kilometres

For further details about this map, please contact

Director

Gujarat, Damán & Diu Geo-Spatial Data Centre

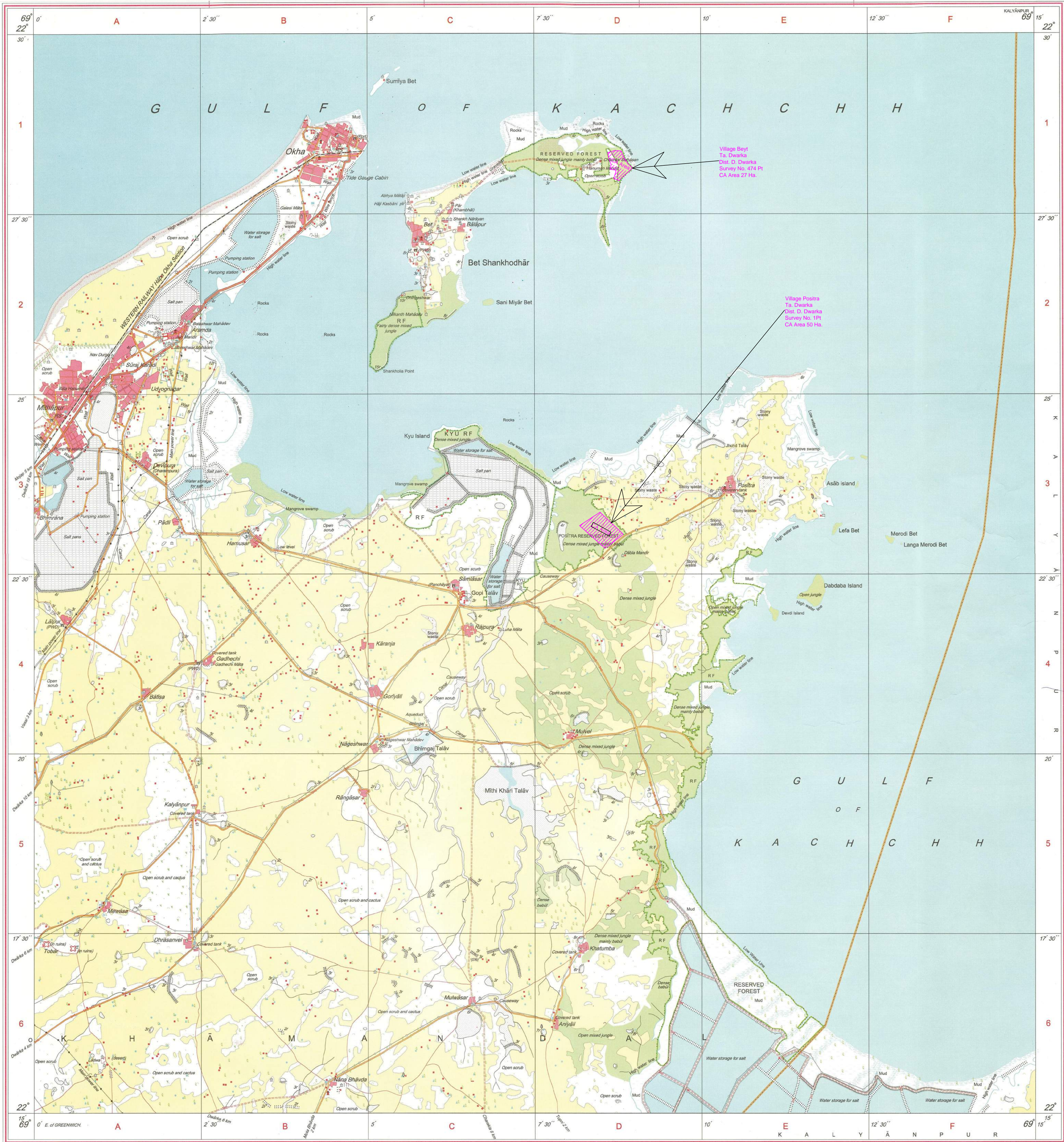
Survey of India, Sector-10 (A)

Gandhinagar.

WEBSITE - www.surveyofindia.gov.in

Reproduction in whole or part by any means is prohibited without the written permission of Survey of India, the National Mapping Agency.

GOVERNMENT OF INDIA COPYRIGHT, 2011.



REG. No. 9648-SPS D 11 (GD & D GDC-1:50,000)-1508/15

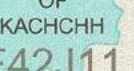








यह नक्शा भारतीय सर्वेक्षण विभाग, लखनऊ (विशेष), केजीएल (एनटी) (एनटीसी-वेस्ट) के दिशाने में प्रकाशित है।
Published under the direction of Rajendra Mani Tripathi, M.Sc. (Physics), P.G. Diploma (Carto) (ITC, The Netherlands) Surveyor General of India.
Survey of India, Haldibagh East, Post Box No. 37, Dehra Dun - 248001 (Uttarakhand),
Department of Science & Technology, Government of India.

PRINTED AT THE SOUTHERN PRINTING GROUP OF SURVEY OF INDIA.



No. F42J16

Scale 1:50,000

 <p>F42J11 (41F11)</p>	 <p>F42J15 (41F15)</p>	 <p>F42K3 (41U3)</p>
 <p>F42J12 (41F12)</p>	 <p>F42J16 (41F16) Uttamgar GUJARAT</p>	 <p>F42K4 (41J4)</p>
 <p>F42P9 (41G3) Port Blair</p>	 <p>F42P13 (41G13)</p>	 <p>F42Q1 (41K1) Rajkot GUJARAT</p>

भारतीय सर्वेक्षण विभाग

SURVEY OF INDIA

1st Edition 2011

Price : Rs. 77/-

CONVENTIONAL SYMBOLS

Rivers highway with toll, with bridge, with distance data
 Roads, including according to topology
 Roads, double carriageway according to topology
 Unimproved road. Cart-track. Pack-track with post. Foot-path.
 Stream, with track in bed, unimproved canal
 Dam, masonry or rock-filled, weir
 Dam, dry water channel with bridge
 Submerged rock. Shoal. Sanding. Reeds
 Wells, lined, unlined. Well. Spring. Tanks, perennial, dry
 Embankments, road or rail, track, broken ground
 Railways, broad gauge, double, single with station, under cover
 Railways, other gauges; double, single with distance data, do
 Mineral line or railway, K.K. Cutting with tunnel
 Tunnel with access roads
 Salt features (Ulf. (Z)anah) (Z)anah, (Z)anah (Z)anah
 Town or Village; inhabited, deserted, Fort
 Hut, permanent; temporary, Tower, Angles
 Temple, Obelisk, Church, Monks, Monks, Town, Grown
 Lighthouse, Lighthouse, Bays, lighted, unlighted, lighthouse
 Palm, palm, other, Plantain, Corn, Barban, Other trees
 Areas, cultivated, wood, Swampy tree
 Boundary, international
 state, demarcated, undemarcated
 district, subdivision, rural or tribal, forest
 Boundary points, surveyed, uncalculated
 Height, demarcated, surveyed, uncalculated
 Bench-mark; geodetic; survey; canal
 Post office. Overhead tank
 Rest house or inspection building. Grass house. Police station
 Camping ground. Forest reserved, protected
 Special zones administrative, political or tribal
 Headquarters, District, Village, Village, Dispensary
 Airplane, Helipad, Tourist site
 Power line, with pylons surveyed, with poles unsurveyed

REFERENCE

REFERENCE

NOTES :-

Heights and Contours have not been shown.
A relative height, e.g. 8r, represents the approximate height, in metres, between the top and bottom of a steep slope.
Tanks, shown dry, in this area usually contain water from July to December.
Cultivation is periodic and dependent on rainfall.

COMPILATION INDEX

A Compiled from 1:25,000 survey, 1986-87, Updated for major details during 2005-06.

Projection - UTM Datum - WGS 84

Magnetic Variation from True North about $\frac{1}{4}^{\circ}$ West in 2005

1:50,000

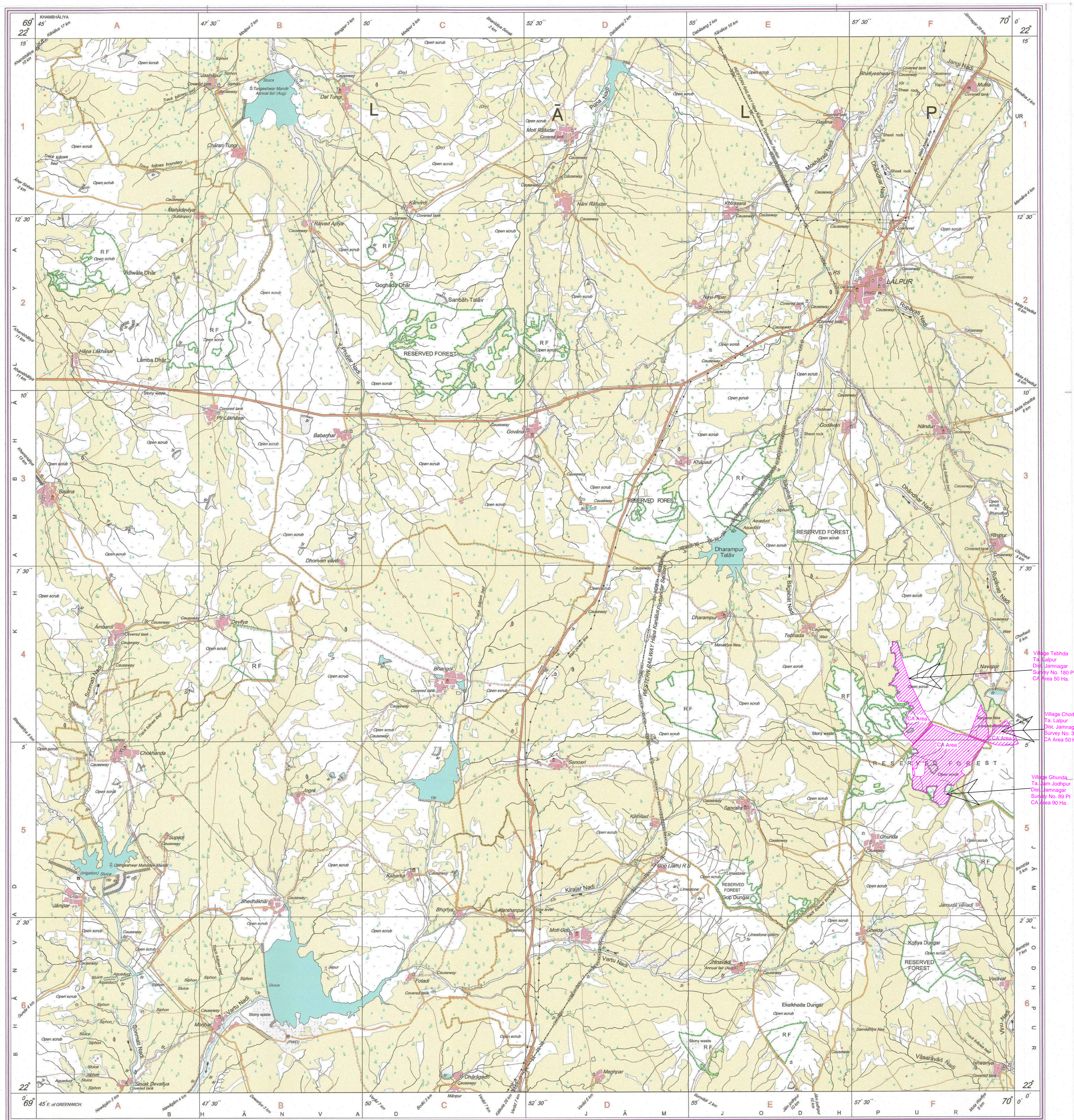
For further details about this map, please contact

Director
Gujarāt, Damān & Diu Geo-Spatial Data Centre
Survey of India, Sector-10 (A)
Gāndhīnagar.

WEBSITE - www.surveyofindia.gov.in

Reproduction in whole or part by any means is prohibited without the written permission of Survey of India, the National Mapping Agency.

GOVERNMENT OF INDIA COPYRIGHT, 2011



REG. No. -SPG D11 (GD&D GDC-1:50,000)

भारत के महसूलसूचक, एवं सुब्बा राव, बी०ई०, के निदेशन में प्रकाशित,
Published under the direction of Swarna Subba Rao, B.E., Surveyor General of India,
Survey of India, Hathibarkala Estate, Post Box No.37, Dehra Dun-248001 (Uttarakhand)
Department of Science & Technology, Government of India.

PRINTED AT THE SOUTHERN PRINTING GROUP OF SURVEY OF INDIA.

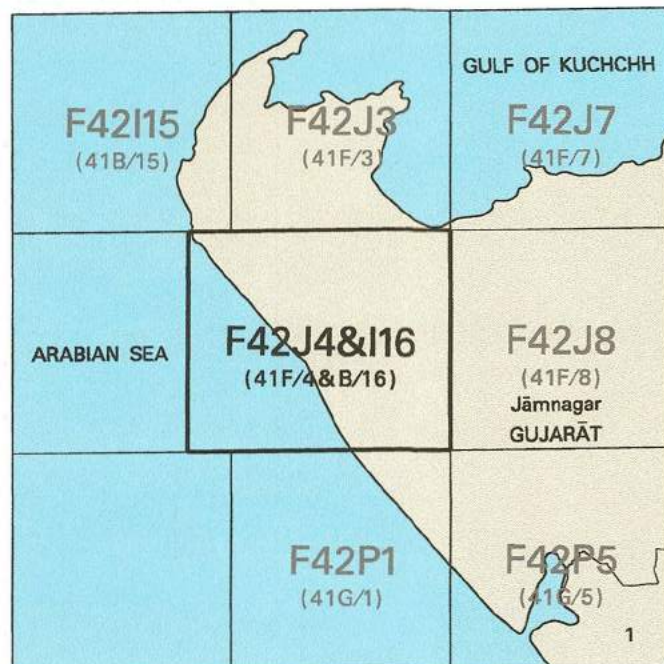


निर्गत के लिए नहीं NOT FOR EXPORT

OPEN SERIES
MAP

No. F42J4&I16

Scale 1:50,000



भारतीय सर्वेक्षण विभाग

SURVEY OF INDIA

1st Edition 2011.

Price : ₹ 77/-

CONVENTIONAL SYMBOLS

- Express Highway: with toll with bridge, with distance signs
- Roads, metalled: according to importance
- Double carriageway: according to importance
- Unmetalled Road: Cart-track, Pack-track and path, Foot-path
- Stream: with track in bed, unflooded, Canal
- Dam: masonry or rock-filled, earthenwork, Weir
- River: dry with water channel, with island & rocks, Tidal river
- Submerged rocks, Shoal, Swamp, Reeds
- Wells: lined, unfired, Tube-well, Spring, Tank, perennial, dry
- Embankment: road or rail, bank, broken ground
- Railways: broad gauge, double, single with station, under construction
- Railway: other gauge: double, single with station, do.
- Mineral line or tramway, Kib: Cutting with tunnel
- Contours with sub-features: Rocky slopes, Cliff
- Sand features: (Brid. Chaud-hills (permanent), (Discontinued)
- Towns or Villages: inhabited, deserted, Fort
- Huts: permanent, temporary, Tower, Antiquities
- Temples, Chhat, Church, Mosque, Igloo, Tomb, Graves
- Lighthouse, Lightship, Buoy, lighted, unlighted, Anchorage
- Islet, Vex or rock, Open, Sand
- Palms, palm, other, Plantain, Coffer, Bamboo, Other trees
- Areas: cultivated, wooded, Surveyed tree
- Boundary: international
- state: demarcated, undemarcated
- district: subdivided, label or label, forest
- Boundary Pillars: surveyed, uncoloured
- Height, triangulation: station: metric, approximate
- Bench-mark: geodetic, levelling, sand
- Post office: District, Sub-Post Office
- Rail House or Inspector Bungalow, Circuit House, Police Station
- Camping ground, Forest: reserved, protected
- Speed reserve: administrative, locality or tribal
- Hospital, Dispensary, Veterinary: Hospital / Dispensary
- Aerodrome, Helipad, Tourist site
- Power line: with pylons surveyed, with poles unsurveyed

REFERENCE

NOTES :-

Heights and Contours have not been shown.
A relative height, or, represents the approximate height, in metres, between the top and bottom of a steep slope.
Tanks, shown dry in this area usually contain water from July to October.
n areas, where no tube-wells exist, cultivation is periodic and dependent on rainfall.

COMPILED INDEX

A Compiled from 1:50,000 surveyed during 1955-56 and collection has been accepted from the edition map of 1:50,000 scale.

Projection - UTM Datum - WGS 84

Magnetic Variation from True North about 1° West in 2005.

1:50,000
0 500 1000 2000 3000 4000 5000 6000 7000 8000 9000 10000
0 1 2 3 4 5 6 7 8 9 10
Kilometres

For further details about this map, please contact
Director
Gujarat, Daman & Diu Geo-Spatial Data Centre
Survey of India, Sector-10(A)
Gandhinagar.

WEBSITE - www.surveyofindia.gov.in

Reproduction in whole or part by any means is prohibited
without the written permission of Survey of India, the
National Mapping Agency.

GOVERNMENT OF INDIA COPYRIGHT, 2011.



REG. No. -SPG 1/1105 & G 100-1/50,000-

भारत के सर्वेक्षण सर्वेक्षण विभाग, भारत, के द्वारा जारी,
Published under the direction of Swarna Subba Rao, G.E., Surveyor General of India,
Survey of India, Hathi Bakshi Estate, Post Box No. 37, Dehra Dun - 248001 (Uttarakhand),
Department of Science & Technology, Government of India.

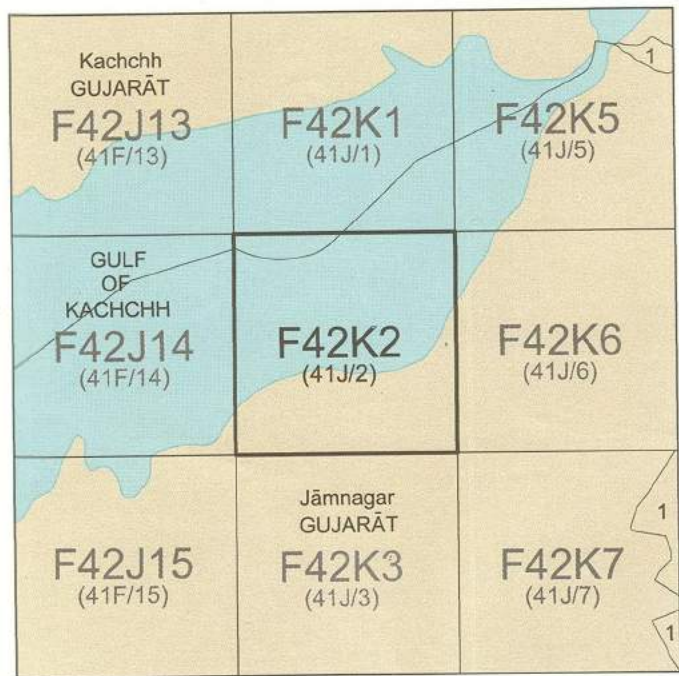
PRINTED AT THE SOUTHERN PRINTING GROUP OF SURVEY OF INDIA.



OPEN SERIES
MAP

No. F42K2

Scale 1:50,000



1 Rajkot, GUJARAT.

भारतीय सर्वेक्षण विभाग SURVEY OF INDIA

1st Edition 2011.

Price: Rs. 119/-

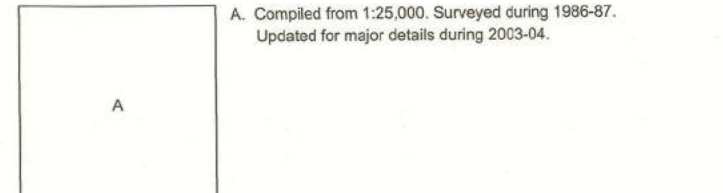
CONVENTIONAL SYMBOLS

- Express highway with toll; with bridge with distance stone
- Roads, installed according to importance
- Roads, double carriageway according to importance
- Unimproved road, Cart-track, Paved road with drains, Footpath
- Sewerage with brick in bed, unimproved, Canal
- Dams, masonry or rock-filled, earthwork, Weir
- River, dry with water channel, with island & rocks, Tidal river
- Submerged rocks, Shoal, Swamp, Reeds
- Wells, hand, unroofed, Tube-well, Spring, Tanks, perennial, dry
- Embankments, road or rail, level, Broken ground
- Railways, broad gauge, double, single with station, under construction
- Railways, other gauges, double, single with station, under construction
- Mineral line or tramway, Kin, Cutting with tunnel
- Contours with sub-features, Rocky slopes, Cliff
- Sand features (flat, dune, hillock, permanent), (temporary)
- Towns or villages, established, deserted, Fort
- Huts, permanent, temporary, Tower, Antenna, etc.
- Temples, Chhatri, Church, Mosque, Idgah, Tomb, Graves
- Lighthouse, Lightship, Buoy, lighted, unlighted, Anchorage
- Mine, Vess on trails, Grass, Scrub
- Prison, penitentiary, other, Prison, Cellular, Barracks, Other, etc.
- Airfield, cultivated, wooded, Surveyed tree
- Boundary, international
- State, demarcated, undemarcated
- District, subdivision, taluk or block, forest
- Boundary pillars, surveyed, uncoloured
- Height, triangulation station, approximate
- Bench-mark, geodetic, tertiary, canal
- Post office, Overhead tank
- Rest house or inspection bungalow, Cinch house, Police station
- Camping ground, Forest, reserved, protected
- Special names, administrative, locally or tribal
- Hospital, Dispensary, Veterinary, Hospital, Dispensary
- Aerodrome, heliport, Tourist site
- Power line, with pylons surveyed, with poles unsurveyed

NOTES

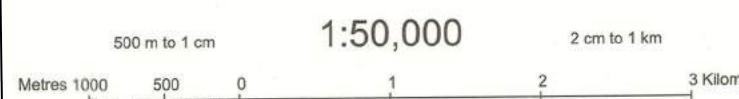
- Heights and Contours have not been shown.
- A relative height, e.g., 100, denotes the approximate height, in metres, between the top and bottom of a steep slope.
- Tanks, shown dry, in this area usually contain water from July to October.

COMPILED INDEX



Projection - UTM Datum - WGS 84

Magnetic Variation from True North about 1° West in 2005.



For further details about this map, please contact

Gujarat, Daman & Diu Geo-Spatial Data Centre
Survey of India, Sector-10 (A)
Gandhinagar.

WEBSITE - www.surveyofindia.gov.in

Reproduction in whole or part by any means is prohibited
without the written permission of Survey of India,
National Mapping Agency.

GOVERNMENT OF INDIA COPYRIGHT, 2011.



REG. No. 7475-SPG D 11 (G & D) C.D.C. (15/02/08)-1308/15.

Printed under the direction of Rajendra Mani Tripathi, M.Sc. (Physics), P.G. Diploma (Carto) (ITC, The Netherlands) Surveyor General of India,
Survey of India, Hithibarkala Estate, Post Box No. 37, Dabra Din - 248001 (Uttarakhand),
Department of Science & Technology, Government of India.

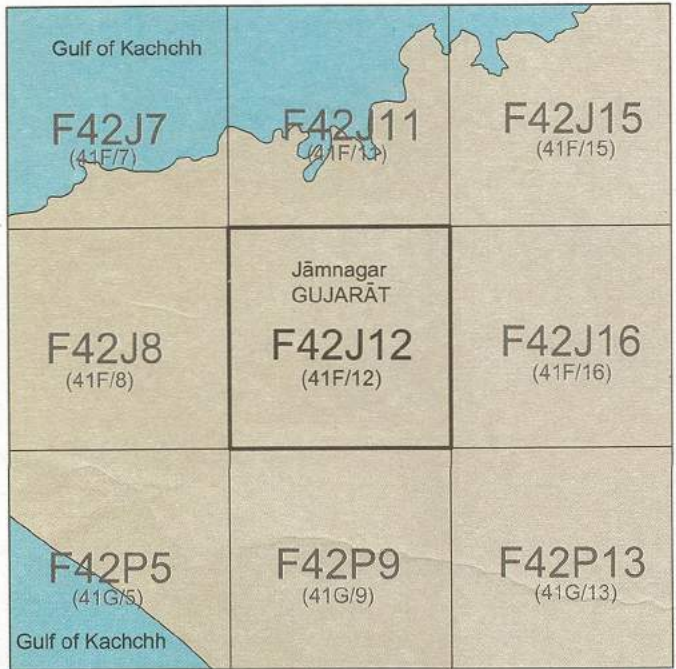
PRINTED AT THE SOUTHERN PRINTING GROUP OF SURVEY OF INDIA.



नियमित के लिए नहीं NOT FOR EXPORT

OPEN SERIES MAP

No. F42J12
Scale 1:50,000



भारतीय सर्वेक्षण विभाग SURVEY OF INDIA

1st Edition 2011.

Price: Rs. 70/-

CONVENTIONAL SYMBOLS

- Express highway with toll, with bridge, with distance stone
- Roads, metalled according to importance
- Unmetalled road, Cart-track, Paved road with pass, Foot-path
- Stream, with track in bed, underfed, Canal
- Dam, masonry or rock-filled, earthwork, Wall
- River, dry with water channel, with island & rocks, Tidal river
- Submerged rocks, Shoal, Slender, Reef
- Wells, lined, unlined, Tube-well, Spring, Tarn, Perennial, dry
- Embankment, road or rail, broken ground
- Railways, broad gauge, double, single with station, under construction
- Mineral line or tramway, Rail, Clung with tunnel
- Contour with sub-levels, Rocky slopes, Cliff
- Sand features (Cliff, Open, Hills, Mountains), (Dunes, Spitting)
- Towns or Villages, inhabited, deserted, Fort
- Huts, permanent, temporary, Tower, Antiquities
- Temple, Chhatra, Church, Mosque, Igloo, Tomb, Graves
- Lighthouse, Uplight, Beacon, Signal, Airstorage
- Mine, Vine on trellis, Grass, Scrub
- Palms, papyrus, other, Plantain, Conifer, Bamboo, Other trees
- Areas, cultivated, wooded, Surveyed tree
- Boundary, international
- State demarcated, undermarked
- Electric, substation, aerial or cable, line
- Boundary pillars, surveyed, uncoloured
- Height, triangulation station, point, approximate
- Bench-mark, geodetic, tertiary, canal
- Post office, Overhead tank
- Rest house or inspection bungalow, Club house, Police station
- Camping ground, Forest, reserved, protected
- Special names, administrative, locality or tribal
- Hospital, Dispensary, Veterinary, Hospital / Dispensary
- Airport, Helicopter, Tourist site
- Power line, with pylons surveyed, with poles unsurveyed

NOTES

- Heights and Contours have not been shown
- A relative height, Δ , represents the approximate height, in metres, between the top and bottom of a steep slope
- Tanks, shown dry in the area usually contain water from July to October
- In areas, where no tube-wells exist, cultivation is periodic and dependent on rainfall

COMPILED INDEX

A. Compiled from 1:25,000 surveyed 1986-87 Updated for major details during 2005-06.

Projection - UTM Datum - WGS 84

Magnetic Variation from True North about $\frac{1}{2}^\circ$ West in 2005.

(Decreasing by about 1' annually)

1:50,000

500 m to 1 cm

Metres 1000 500 0 1 2 3 Kilometres

For further details about this map, please contact

Director

Gujarat, Daman & Diu Geo-Spatial Data Centre

Survey of India, Sector-10 (A)

Gandhinagar.

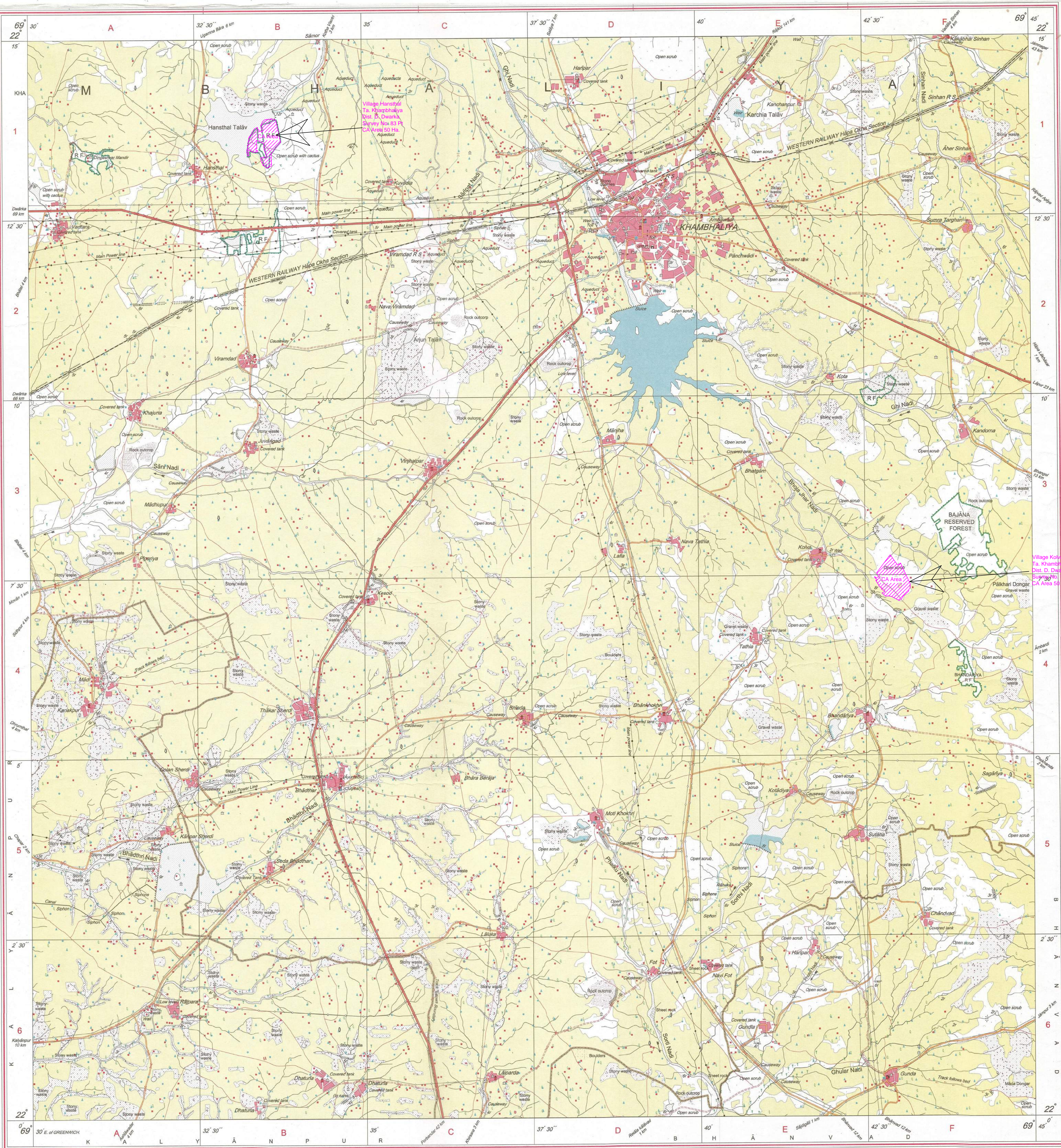
WEBSITE - www.surveyofindia.gov.in

Reproduction in whole or part by any means is prohibited

without the written permission of Survey of India, the

National Mapping Agency.

GOVERNMENT OF INDIA COPYRIGHT, 2011.



Map No. 9228-19C D-18 (Gujarat, Daman & Diu GDC-1 50,000-1:50,000)

Published under the direction of Swarna Subba Rao, B.E., Surveyor General of India, Hattibarkata Estate, Post Box No. 37, Dabra Dun - 245001 (Uttaranchal).

Department of Science & Technology, Government of India.

PRINTED AT THE SOUTHERN PRINTING GROUP OF SURVEY OF INDIA.



Scale 1:50,000

1st Edition 2011. Price : Rs. 77/-

[illegible]

Tanks, shown dry, in this area usually contain water from July to February.
A relative height, e.g., 8r, represents the approximate height, in metres, between the top and bottom of a step slope.
International boundary in the adjoining sheet in Administrative Index has not been shown.
Cultivation is periodic and dependent on rainfall.

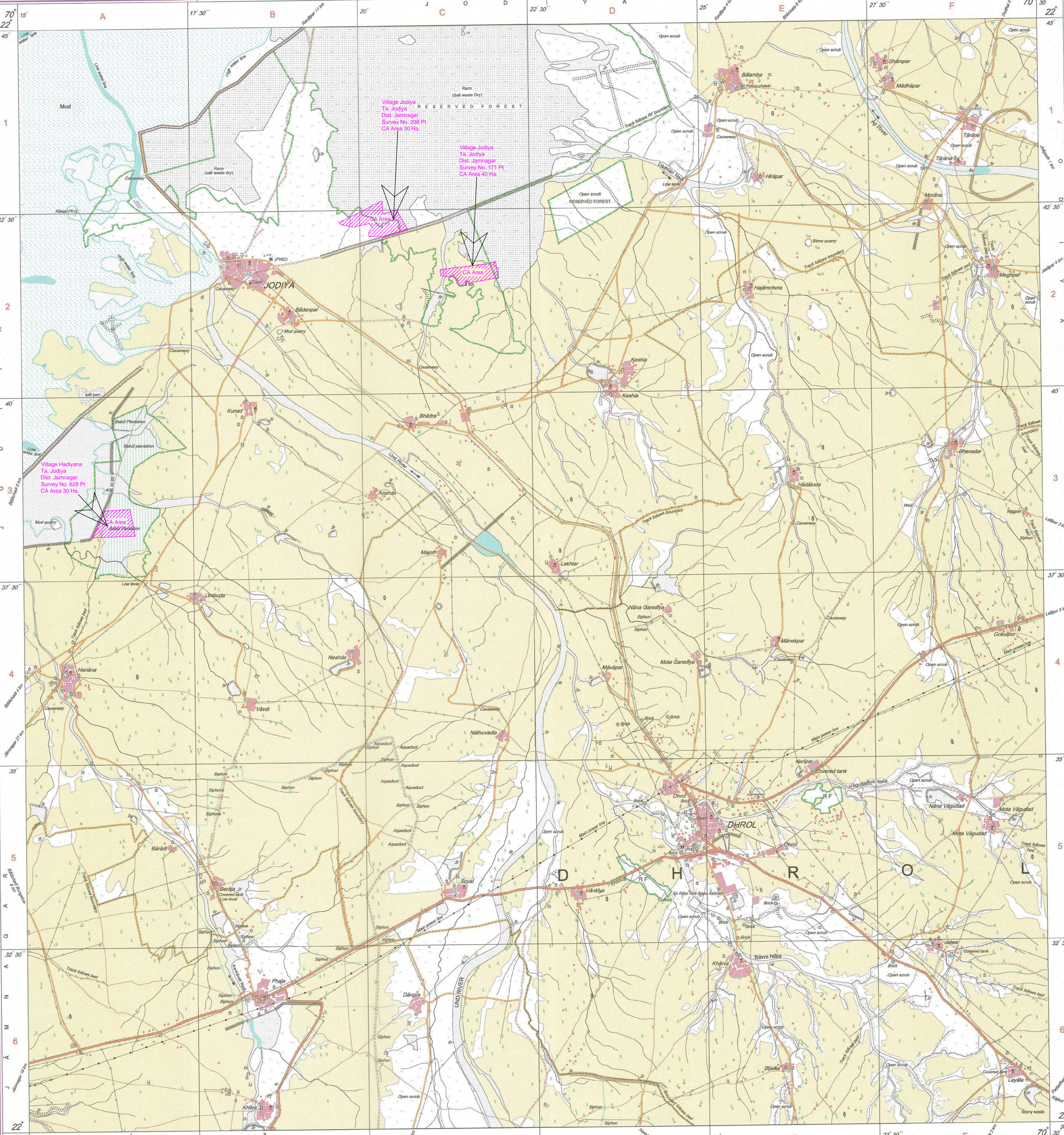
A. Compiled from 1:25,000, Surveyed during 1989-91.
Updated for major details during 2003-04.

Magnetic Variation from True North about $\frac{1}{4}$ West in 2005
(Decreasing by about 1' annually).

Director
Gujarat, Damam & Diu Geo-Spatial Data Centre
Survey of India, sector-10(A)
Gandhinagar.

Reproduction in whole or part by any means is prohibited without the written permission of Survey of India, the National Mapping Agency.

GOVERNMENT OF INDIA COPYRIGHT, 2011.



भारत के महासर्वेक्षक, स्वर्ण सुब्बा राव, बी०ई०, के निदेशन में प्रकाशित,
Published under the direction of Swarna Subba Rao, B.E., Surveyor General of India,
Survey of India, Hāthibarkala Estate, Post Box No.37, Dehra Dūn-248001 (Uttarākhānd,
Department of Science & Technology, Government of India.

PRINTED AT THE SOUTHERN PRINTING GROUP OF SURVEY OF INDIA



OPEN SERIES
MAP

No. **F42Q1**
Scale 1:50,000

F42J16 (41F16)	F42K4 (41J14) Jamnagar GUJARAT	F42K8 (41J18)
F42P13 (41G13)	F42Q1 (41K11)	F42Q5 (41K15) Rajkot GUJARAT
F42P14 (41G14) Porbandar GUJARAT	F42Q2 (41K12) Junagadh GUJARAT	F42Q6 (41K16)

भारतीय सर्वेक्षण विभाग

SURVEY OF INDIA

1st Edition 2011.

Price Rs.118/-

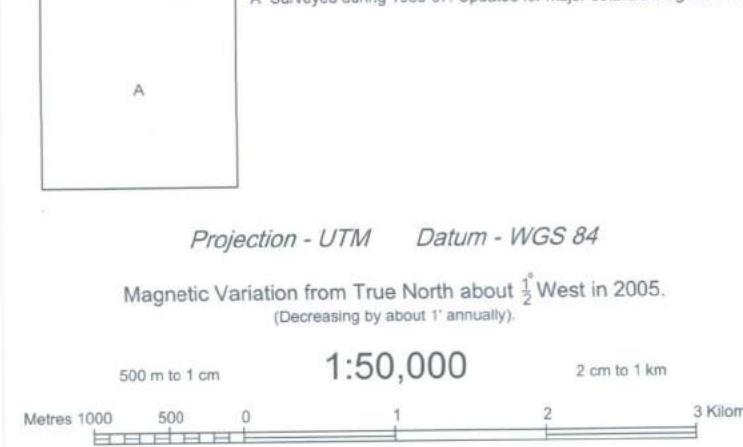
CONVENTIONAL SYMBOLS

Express highway with toll, with bridge, with distance stone	
Roads, metalled, according to importance	
Roads, double carriageway according to importance	
Unmetalled road, Cart track, Pack-track with pass, Foot-path	
Streams, with track in bed, underlined, Canal	
Dams, masonry or rock-filled, earthwork, Well	
River dry with water channel, with island & rocks, Tidal river	
Submerged rocks, Shoal, Swamp, Reefs	
Wells, lined, unlined, Tube-well, Spring, Tanka, perennial, dry	
Embankments, road or rail, trestle, Broken ground	
Railways, broad gauge, double, single, with station, under cover	
Railways, other gauges, double, single with distance stone, do.	
Mineral line or tramway, Kin, Cutting with tunnel	
Contours with sub-fatures, Rocky slopes, Cliffs	
Sand heaves (1:50,000), (1:25,000), (1:10,000), (1:5,000)	
Towns or Villages, inhabited, deserted, Fort	
Hills, permanent, temporary, Tower, Antiquities	
Temples, Chhatris, Church, Mosque, Igloo, Tomb, Graves	
Lighthouses, Lightships, Buoys, lighted, unlighted, Anchorage	
Mine, Veta on trellis, Grass, Scrub	
Palms, palmets, other, Papyrus, Conifer, Bamboo, Other trees	
Areas, cultivated, wooded, Surveyed tree	
Boundary, international	
state, demarcated, undemarcated	
district, subdivision, taluk or block, forest	
Boundary pillars, surveyed, uncoloured	
Height, triangulated station, point, approximate	
Bench-mark, geodetic, tertiary, canal	
Post office, Overhead tank	
Rest house or inspection bungalow, Circuit house, Police station	
Camping ground, Forest, reserved, protected	
Spatial names, administrative, locality or place	
Hospital, Dispensary, Veterinary hospital, Dispensary	
Airport, Helipad, Tourist site	
Power line, with pylons surveyed, with poles unsurveyed	

NOTES :-

Heights and Contours have not been shown.
A relative height, Δ , represents the approximate height, in metres, between the top and bottom of a steep slope.
Tanks, shown dry, in this area usually contain water from July to November.

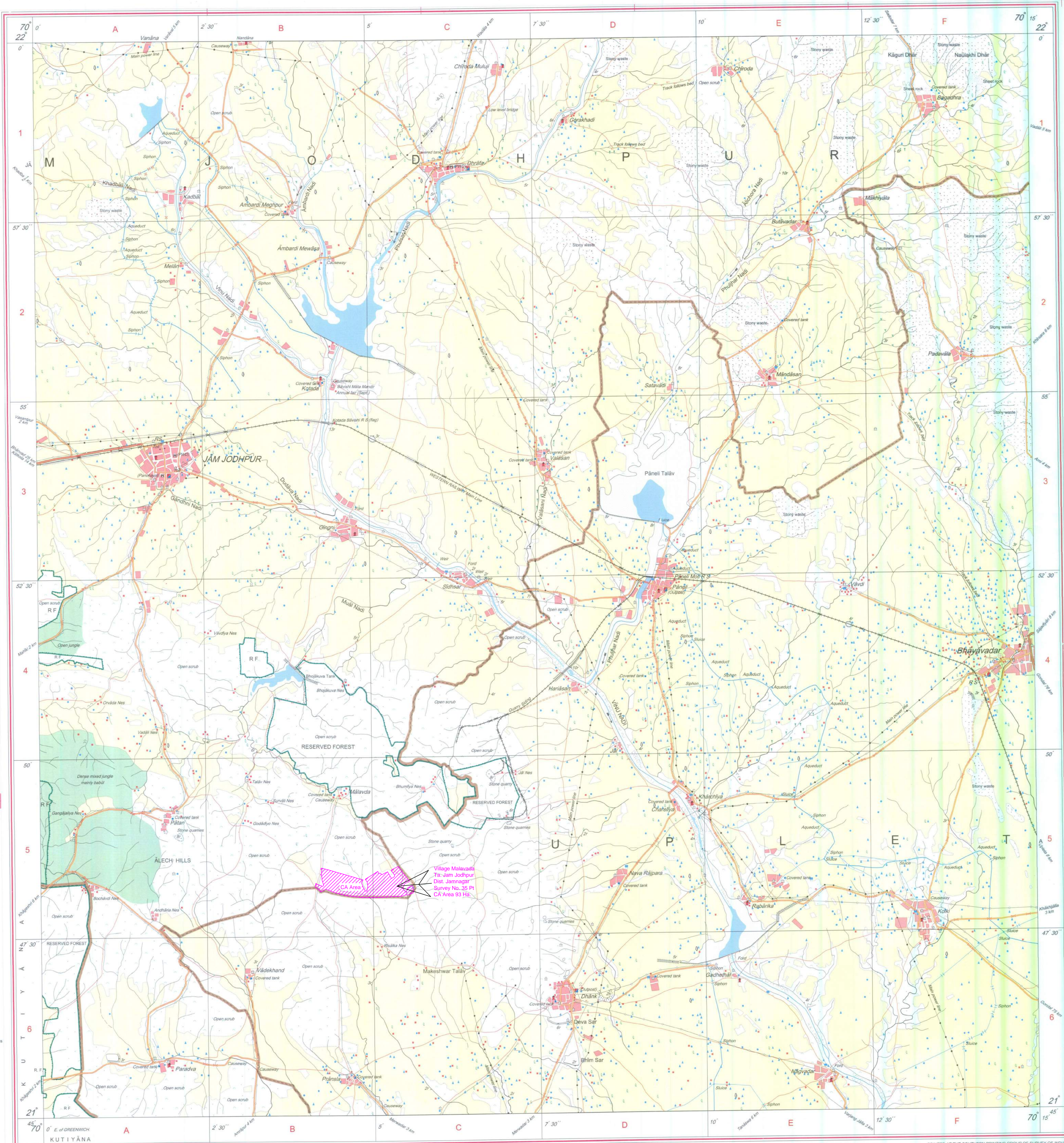
COMPILED INDEX



For further details about this map, please contact
Director
Gujarat, Daman & Diu Geo-Spatial Data Centre
Survey of India, Sector 10 (A)
Gandhinagar.

WEBSITE - www.surveyofindia.gov.in

Reproduction in whole or part by any means is prohibited
without the written permission of Survey of India, the
National Mapping Agency.



REG. No. 919-SPG D 12 (G D & D CDC-150,000-1508 15)

Printed under the direction of Rajendra Mani Tripathi, M.Sc. (Physics), P.G. Diploma (Carto) (ITC, The Netherlands) Surveyor General of India.
Survey of India, Harnibarkata Estate, Post Box No. 37, Dehra Dun - 248001 (Uttarakhand),
Department of Science & Technology, Government of India.

PRINTED AT THE SOUTHERN PRINTING GROUP OF SURVEY OF INDIA