

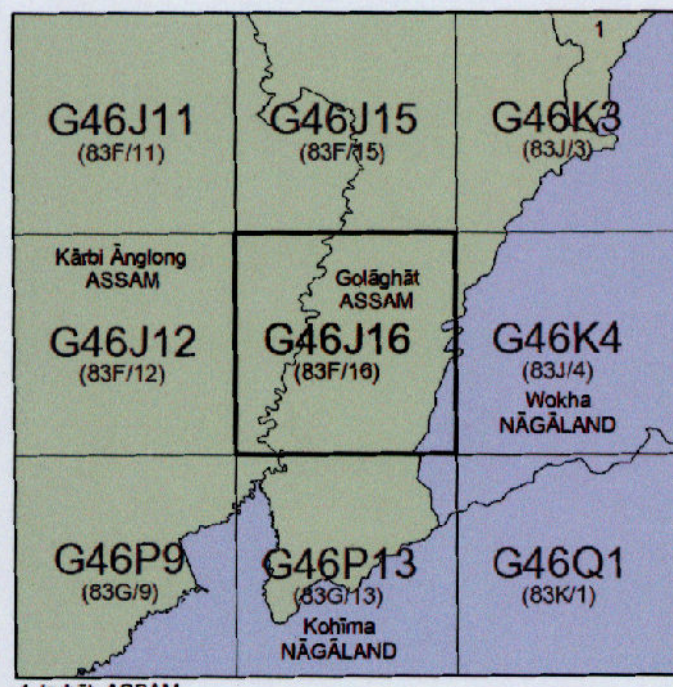
MAP SHOWING THE PROPOSED 0.0225 HECTARE TOWER LOCATION AREA AT DHONPUR NO.1 (UASQ08)

RENGMA RESERVE FOREST UNDER GOLAGHAT DIVISION

SCALE:- 1:50,000



OPEN SERIES MAP
No. G46J16
Scale 1:50,000



भारतीय सर्वेक्षण विभाग SURVEY OF INDIA
1st Edition 2011. Price: Rs. 77/-

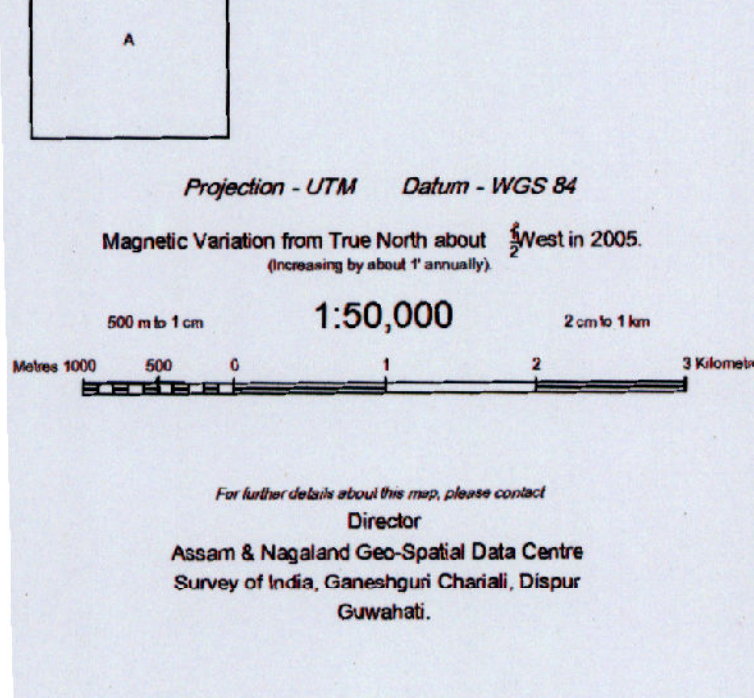
CONVENTIONAL SYMBOLS

Express highway with toll, with bridge, with distance stone	[Symbol]
Roads, metalled according to importance	[Symbol]
Roads, double cartage-way according to importance	[Symbol]
Unmetalled road Cart-track Pack-track with pass Foot-path	[Symbol]
Steamers with track in bed, underlined Canal	[Symbol]
Dams masonry or rock-filled, overflow Weir	[Symbol]
Flow-ay with water channel, with island & corks Total over	[Symbol]
Submerged rock Shoal Stream, floods	[Symbol]
Walls, lined, unlined Tube well Spring Tanks perennial, dry	[Symbol]
Embankments road or rail, bank Broken ground	[Symbol]
Railways broad gauge double single with station, under control	[Symbol]
Railways, other gauge double single with station, under control	[Symbol]
Metalled line or temporary Sid. Cutting with tunnel	[Symbol]
Contours with subdivisions Rocky slopes Cliff	[Symbol]
Band features (1) (2) (3) (4) (5) (6) (7) (8) (9) (10) (11) (12)	[Symbol]
Towns or villages situated, deserted, fort.	[Symbol]
Huts, permanent, temporary, Tents, Antiquities	[Symbol]
Temples Chhatra Chhatra Mosque Light Tower Obelisk	[Symbol]
Lighthouses Lightships Buoys lighted, unlighted, Anchorage	[Symbol]
Mine Vines on hills, Caves, Sunk	[Symbol]
Palms palm-trees other Plants Conifer Bamboo Other trees	[Symbol]
Areas cultivated, wooded, Surveyed line	[Symbol]
Boundary, international	[Symbol]
state demarcated, undemarcated	[Symbol]
Boundary pillars, surveyed, un-surveyed	[Symbol]
Height, triangulated station, point, approximate	[Symbol]
Bench-mark, general, tertiary, canal	[Symbol]
Post office Telegraph office, Overhead tank	[Symbol]
Rest house or inspection bungalow Circuit house, Police station	[Symbol]
Camping ground Forest reserved, protected	[Symbol]
Speed names, administrative, locally or tribal	[Symbol]
Hospital, Dispensary, Veterinary Hospital/Dispensary	[Symbol]
Aerodrome, Helipad, Tourist site	[Symbol]
Power line with pylons surveyed, with poles un-surveyed	[Symbol]

REFERENCES
M 39 National Highway No. 39

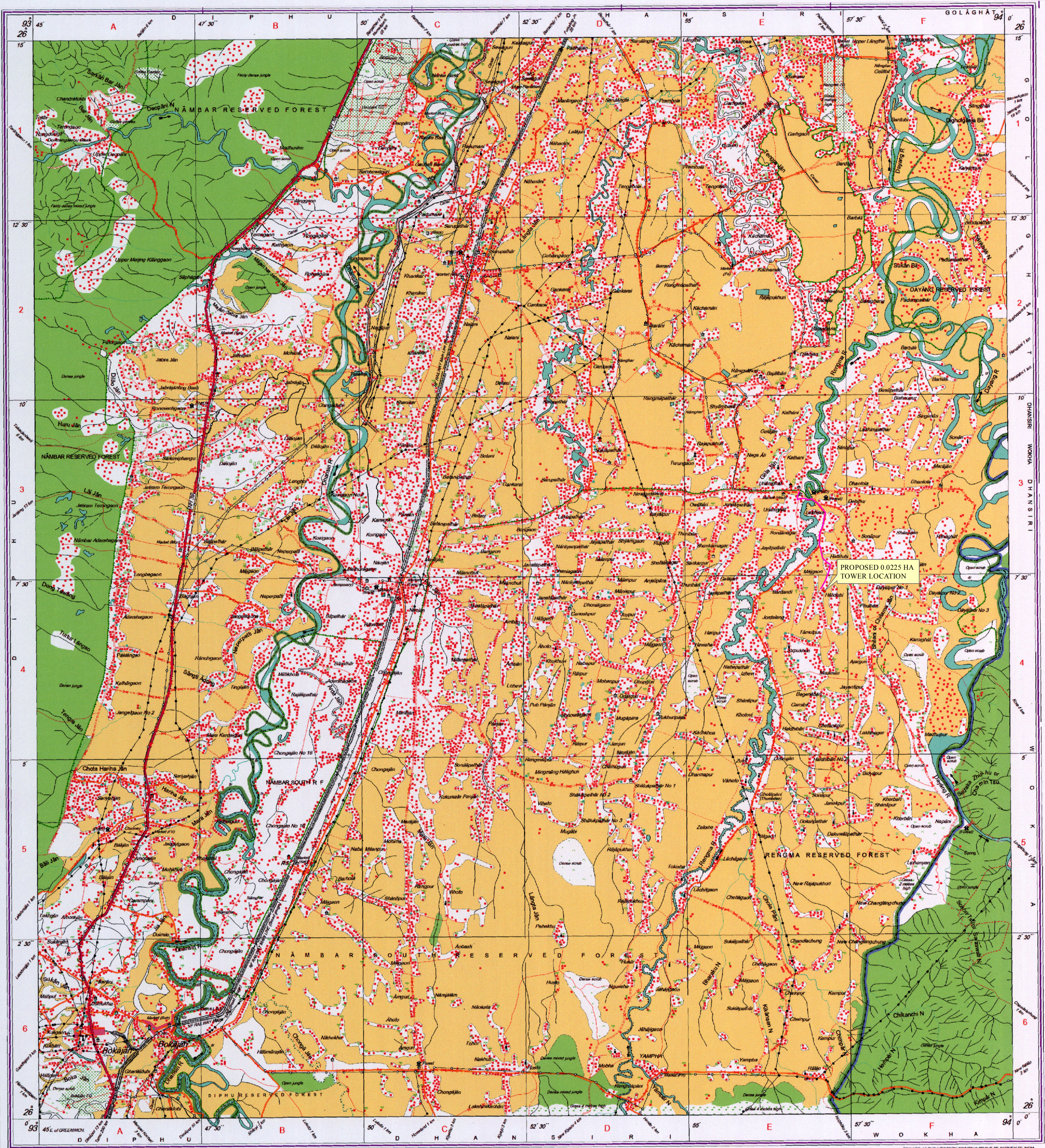
NOTES
Height and Contour have not been shown
A relative height, e.g., 20, represents the approximate height, in metres, between top and bottom of a slope
The inter-state boundary between Assam and Nagaland shown on this map is as interpreted from North-Eastern Areas (Re-organisation) Act, 1951 but yet to be verified.
Boundary of Sub-division of Golaghat District in Assam has been shown in the sheet but has yet to be verified.
The maps Protective embankments in this sheet, on which road have not been shown, can also take limited vehicle traffic. Permission to take vehicles along these embankments is required from the Embankment & Drainage Branch of W.D. authorities.
Boundaries of sub-division of Wokha District in Nagaland have not been shown for want of reliable information.
Markings shown in the sheet are commonly used symbols.
Setback lines are shown thus

COMPILED INDEX
A. Compiled from 1:25000 survey 1989-90. Updated for major details during 2005-06.



Projection - UTM Datum - WGS 84
Magnetic Variation from True North about 1° West in 2005 (increasing by about 1° annually)
For further details about the map, please contact
Director
Assam & Nagaland Geo-Spatial Data Centre
Survey of India, Gauhati
Gauhati, Assam

WEBSITE - www.surveyofindia.gov.in
Reproduction in whole or part by any means is prohibited without the written permission of Survey of India, the National Mapping Agency.



Legend

- TOTAL STATION POINTS OF THE PROPOSED TOWER LOCATION AREA
- PROPOSED TOWER LOCATION AREA
- EXISTING ROAD

TOTAL STATION COORDINATE READINGS

TOTAL STATION POINTS	LONGITUDE	LATITUDE	AREA (HA)	NAME OF LOCATION	NAME OF RESERVE FOREST	NAME OF DIVISION
1	93° 57' 9.409" E	26° 7' 16.820" N	0.0225	DHONPUR NO.1 (UASQ08)	RENGMA RESERVE FOREST	GOLAGHAT DIVISION
2	93° 57' 9.222" E	26° 7' 16.363" N				
3	93° 57' 9.729" E	26° 7' 16.194" N				
4	93° 57' 9.916" E	26° 7' 16.652" N				

भारत के सर्वेक्षण, सर्वेक्षण विभाग, भारत, के अधिकार में प्रकाशित।
Published under the direction of Swarna Subba Rao, B.E., Surveyor General of India.
Survey of India, Wadia Institute Estate, Post Box No. 37, Dehra Dun-248001 (Uttarakhand)
Department of Science & Technology, Government of India.
PRINTED AT THE WESTERN PRINTING GROUP OF SURVEY OF INDIA.