


**Name of Project:** Diversion of 10.19 ha. R.F. Land for construction of Barrage and approach road on Sabarmati River in Village: Hirpura, Ta. Vijapur, Dist. Mehsana.

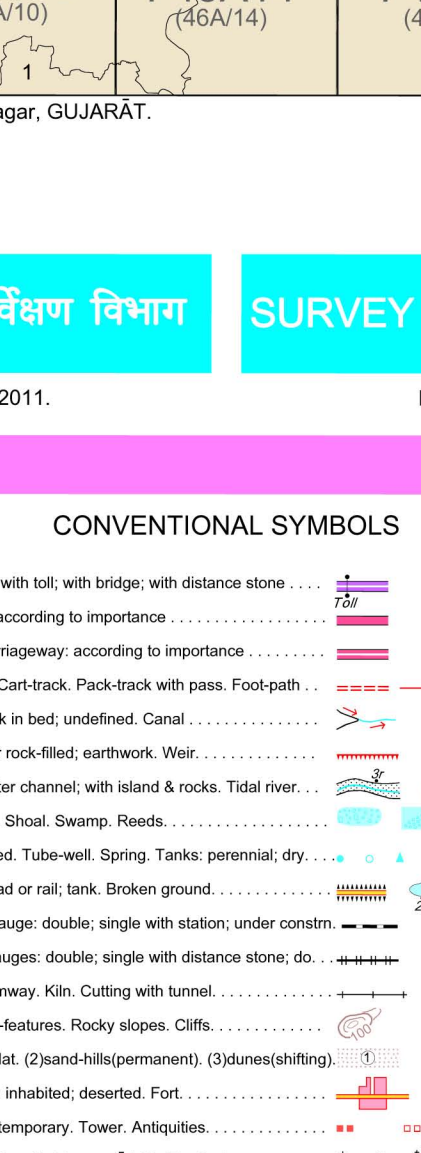
**निर्वात के लिए नहीं NOT FOR EXPORT**



# OPEN SERIES MAP

## No. F43A13

Scale 1:50,000



भारतीय सर्वेक्षण विभाग
SURVEY OF INDIA

1st Edition 2011.
Price : Rs. 77/-

### CONVENTIONAL SYMBOLS

Express highway, with toll; with bridge, with distance stone .....				
Roads, metalled according to importance .....				
Roads, double carriageway according to importance .....				
Unmetalled road, Cart-track, Pack-track with pass, Foot-path .....				
Streams, with track in bed, undefined, Canal .....				
Dams, masonry or rock-filled, earthen, Weir .....				
River, with rock-filled, with island & rocks, Tidal river .....				
Submerged rocks, Shoal, Swamp, Reeds .....				
Wells, Ined, unlined, Tube-well, Spring, Tanks: perennial, dry .....				
Embankments, road or rail, track, Broken ground .....				
Railways, broad gauge, double, single with station, under construction .....				
Canals, other gauges, double single with distance stone, do .....				
Minors line of boundary, Kh. Cutting with tunnel .....				
Contours with sub-features, Rocky slopes, Cliffs .....				
Salt features (Salt, Zandar, Deshpurment), (Saltwater, Shifting) .....				
Towers or Villages: inhabited, deserted, Fort .....				
Huts, permanent, temporary, Tower, Antiquities .....				
Temple, Chhatra, Church, Mosque, Light, Tomb, Graves .....				
Lighthouse, Lightship, Buoys: lighted, unlighted, Anchorage .....				
Moss, Vine on trees, Grass, Scrub .....				
Palms; palmry, other, Plantain, Conifer, Bamboo, Other trees .....				
Areas: cultivated, wooded, Surveyed tree .....				
Boundary, international .....				
state demarcated, undemarcated .....				
district, sub-division, taluk or block, local .....				
Boundary plane: surveyed, uncoloured .....				
Height, triangulated station, point, approximate .....				
BM 63-3 .....				
Post office, Telegraph office, Overhead tank .....				
Rest house or Inspection bungalow, Court house, Police station .....				
Camping ground, Forest: reserved, protected .....				
Species names: administrative, locally or tribal .....				
Hospital, Dispensary, Hospital / Dispensary .....				
Aerodrome, Helipad, Tourist site .....				
Power line: with pylons surveyed; with poles unsurveyed .....				

### NOTES :-

Heights and contours are in metres and above Indian mean sea level.

Contours are approximate.

A relative height, e.g., 100, represents the approximate height, in metres, between the top and bottom of a steep slope.

Tanks, shown dry in this area, usually contain water from July to October.

Cactus hedges generally exist along cart-roads and feed lands.

### COMPLIANCE INDEX

A

A. Surveyed during 1967-68 Updated for major details from 1:25,000 and above 1997-99.

**Projection - UTM Datum - WGS 84**

Magnetic Variation from True North about  $4^{\circ}$  West in 2005.  
(Decreasing by about 1' annually)

500 m to 1 cm

Metres 1000 500 0 0 0

**1:50,000**

CONTOUR INTERVAL 20 METRES

2 cm to 1 km

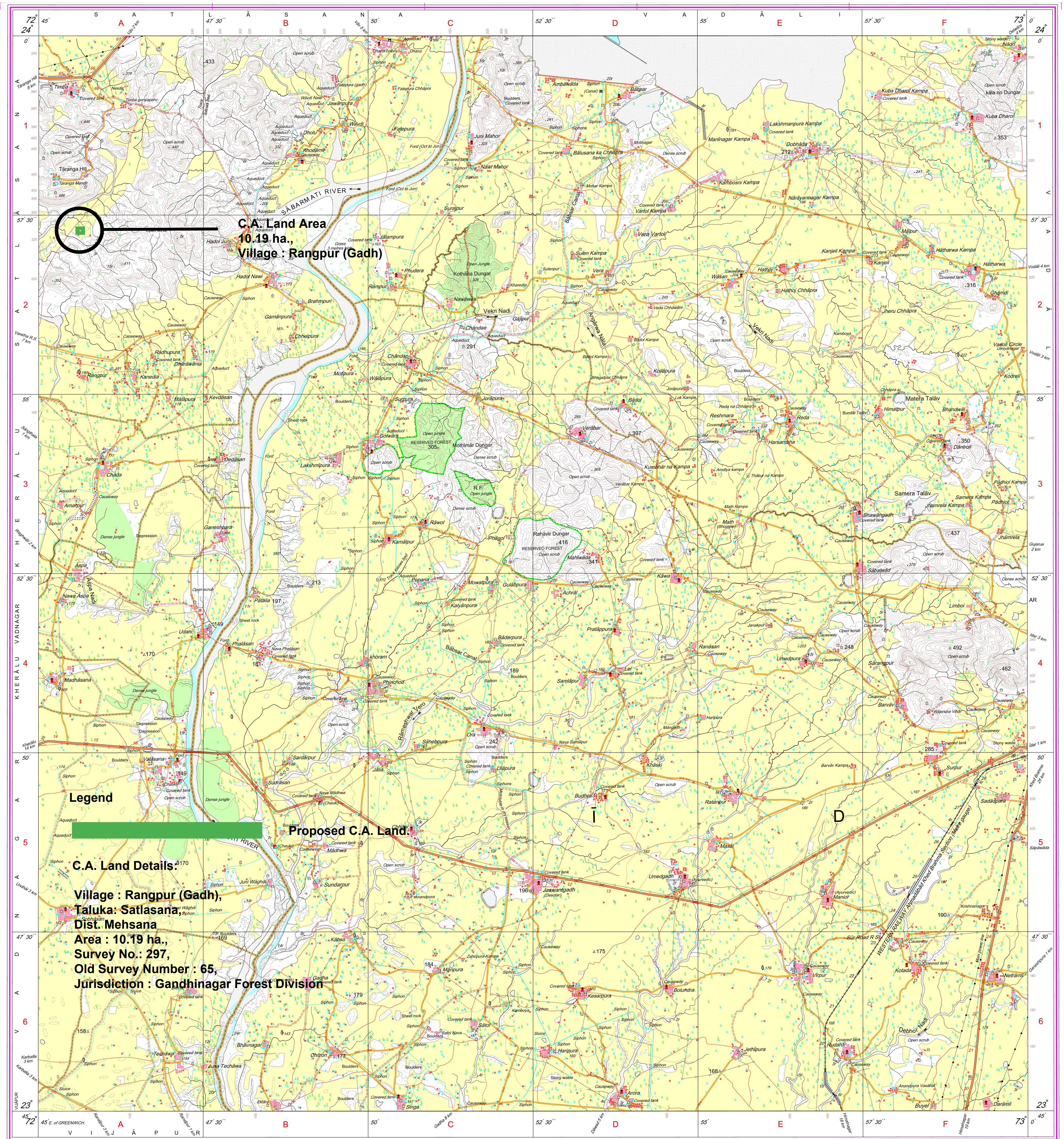
0 1 2 3 Kilometres

For further details about this map, please contact  
Director  
Gujarat, Damán & Diu Geo-Spatial Data Centre  
Survey of India, Sector 10(A)  
Gandhinagar.

[WEBSITE - www.surveyofindia.gov.in](http://www.surveyofindia.gov.in)

*Reproduction in whole or part by any means is prohibited without the written permission of Survey of India, the National Mapping Agency.*

GOVERNMENT OF INDIA COPYRIGHT, 2011.



भारत के महासर्वेक्षक, स्वर्ण सुब्बा राव, बी०ई०, के निदेशन में प्रकाशित,  
Published under the direction of Swarna Subba Rao, B.E., Surveyor General of India,  
Survey of India, Hāthibarkala Estate, Post Box No.37, Dehra Dūn-248001 (Uttarākhānd  
Department of Science & Technology, Government of India.

PRINTED AT THE SOUTHERN PRINTING GROUP OF SURVEY OF INDIA.