

No. F42E3

Scale 1:50,000

F42D14 (41E/14)	F42E2 (41I/2)	F42E6 (41I/6)
F42D15 (41E/15)	Kachchh GUJARAT F42E3 (41I/3)	F42E7 (41I/7)
F42D16 (41E/16)	F42E4 (41I/4)	F42E8 (41I/8)

1 GULF OF KACHCHH.

भारतीय सर्वेक्षण विभाग SURVEY OF INDIA

1st Edition 2011.

Price: Rs. 118/-

CONVENTIONAL SYMBOLS

Express highway with toll; with bridge; with distance stone	20
Roads, metalled: according to importance	
Roads, double carriageway: according to importance	
Unmetalled road. Cart-track. Pack-track with pass. Foot-path	
Streams with track in bed; underlined. Canal	
Dam: masonry or rock-filled; earthenwork. Weir	
River: dry with water channel; with island & rocks. Tidal river	
Submerged rocks. Shoal. Swamp. Reeds	
Wells: lined; unlined. Tubewell. Spring. Tanks: perennial; dry	
Embankments: road or rail; tank. Broken ground	
Railways, broad gauge: double; single with station; under constn.	
Railways, other gauges: double; single with distance stone; do.	
Mineral line or tramway. Kin. Cutting with tunnel	
Contours with sub-features. Rocky slopes. Cliffs	
Sand features: (1) flat, (2) sand hills (permanent), (3) dunes (shifting)	
Towns or Villages: inhabited; deserted. Fort	
Hills: permanent; temporary. Tower. Antiquities	
Temple. Chhatra. Church. Mosque. Idgh. Tomb. Graves	
Lighthouse. Lightship. Buoy: lighted; unlighted. Anchorage	
Mine. Vine on trellis. Grass. Scrub	
Palms: palmyra; other. Plantain. Conifer. Bamboo. Other trees	
Arees: cultivated; wooded. Surveyed tree	
Boundary, International	
state: demarcated; undemarcated	
district: subdivided: taluk or taluk; forest	
Boundary pillars: surveyed; unlocated	
Heights: triangulated: station; point: approximate	
Bench-mark: geodetic; tertiary; canal	
Post office. Overhead tank	
Rest house or inspection bungalow. Circuit house. Police station	
Camping ground. Forest: reserved; protected	
Spaced names: administrative; locality or tribal	
Hospital. Dispensary. Veterinary. Hospital / Dispensary	
Aerodrome. Helipad. Tourist site	
Power line: with pylons surveyed; with poles unsurveyed	

NOTES

Heights and Contours have not been shown.
A relative height, e.g., 50, represents the approximate height, in metres, between top and bottom of a steep slope.
Cultivation is periodic and dependent on rainfall.
The area falling in this sheet, other than that of Anjar, Bhachau and Bhuj talukas, is not included in any taluka but is a part of Kachchh District.

COMPILATION INDEX

A Surveyed during 1966-67. Updated for major details during 2003-04.



Projection - UTM Datum - WGS 84

Magnetic Variation from True North about 0° in 2005.
(Increasing by about 1° East annually).

1:50,000



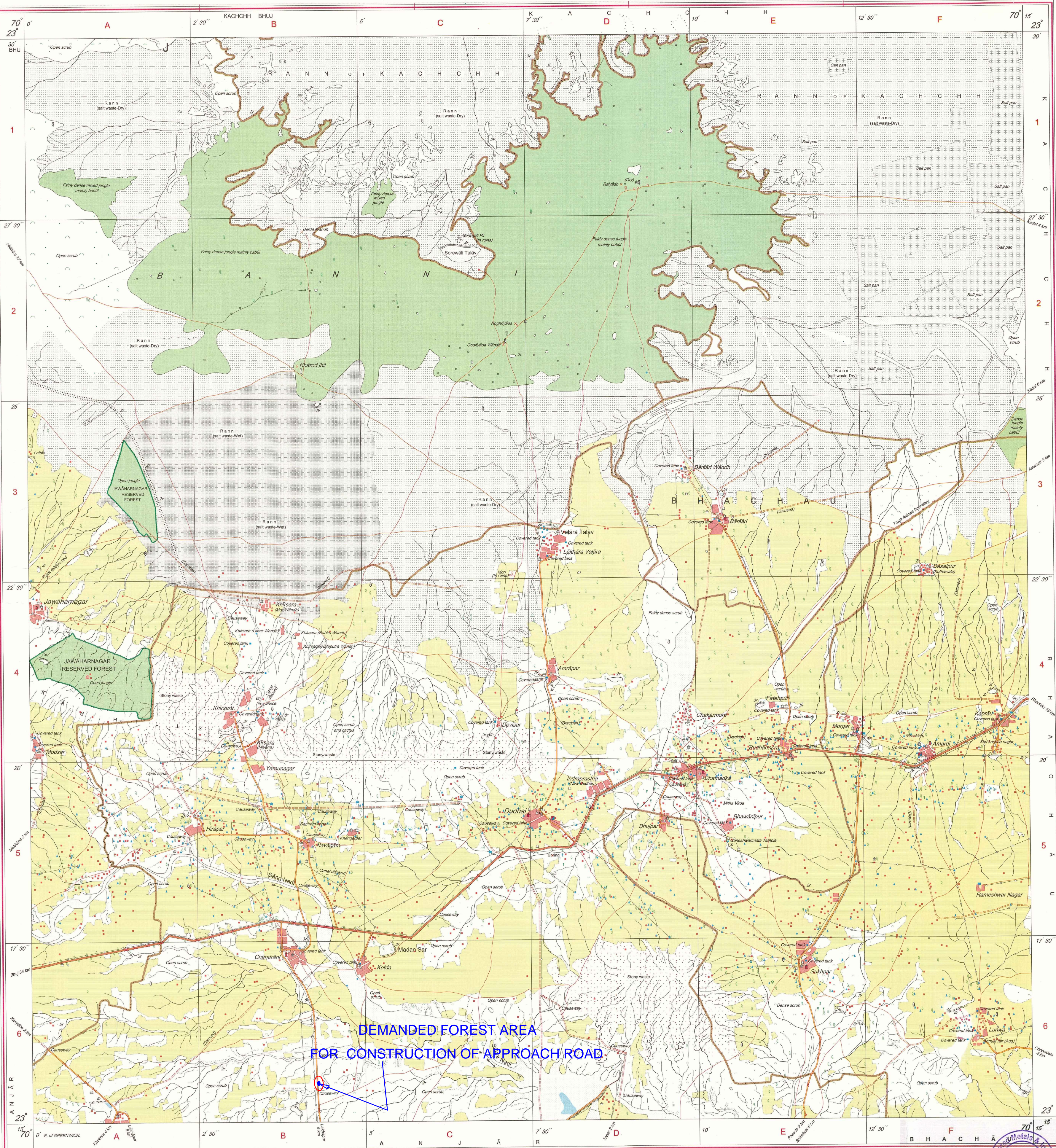
For further details about this map, please contact

Director
Gujarat, Damán & Diu Geo-Spatial Data Centre
Survey of India, Sector-10(A)
Gandhinagar.

WEBSITE - www.surveyofindia.gov.in

Reproduction in whole or part by any means is prohibited
without the written permission of Survey of India, the
National Mapping Agency.

GOVERNMENT OF INDIA COPYRIGHT, 2011.



REG. No. 905-SPG D 12 (G & D GCO-150,000)-1508 '15.

भारत के सर्वेक्षण विभाग: सर्वेक्षण विभाग (सर्वेक्षण), भू-सर्वेक्षण (सर्वेक्षण) के दिशानिर्देश प्रदान।
Published under the direction of: Rajendra Mani Tripathi, M.Sc. (Physics), P.G. Diploma (Carto) (ITC, The Netherlands) Surveyor General of India.
Survey of India, Hahibzalka Estate, Post Box No. 37, Dehra Dun - 248001 (Uttarakhand),
Department of Science & Technology, Government of India.

PRINTED AT THE SURVEY OF INDIA PRESS, NEW DELHI.

पुनर्मुद्रित

DEMANDED PF AREA