

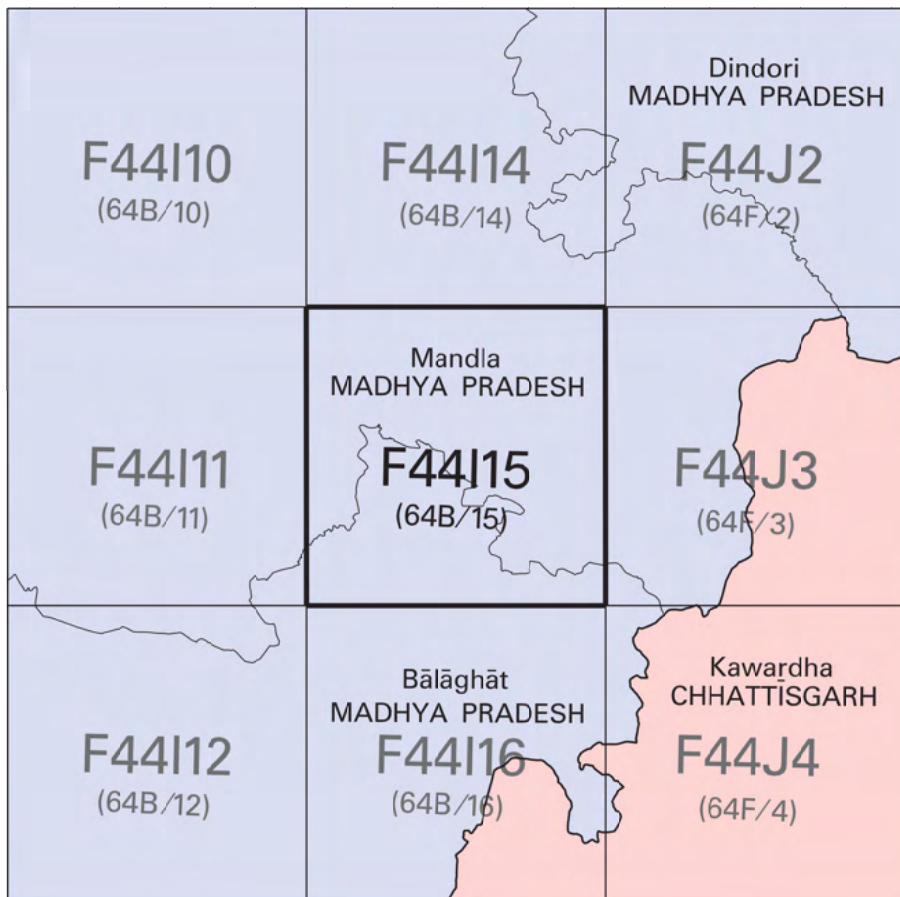


निर्गत के लिए नहीं NOT FOR EXPORT

OPEN SERIES
MAP

No. F44I15

Scale 1:50,000



5.70 Hectares

भारतीय सर्वेक्षण विभाग

SURVEY OF INDIA

1st Edition 2011.

Pice: ₹ 70/-

CONVENTIONAL SYMBOLS

- Express highway with toll; with bridge; with distance stone
Roads, metalled; according to importance
Roads, double carriageway; according to importance
Unmetalled road, Cart-track, Pack-track with pass, Foot-path
Streams; with track in bed; undrained, Canal
Dams; masonry or rock-filled; earthwork, Weir
River, dry with water channel; with island & rocks, Tidal river
Submerged rocks, Shoal, Swamp, Reeds
Wells; lined; unlined, Tube-well, Spring, Tanks; perennial; dry
Embankments; road or rail; tank, Broken ground
Railways, broad gauge; double; single with station; under constn
Railways, other gauges; double; single with distance stone; do
Mineral line or tramway, Kln, Cutting with tunnel
Contours with sub-features, Rocky slopes, Cliffs
Sand features: (liffat)Zsand-hills (permanent), (dis)unstablehills
Towns or Villages; inhabited; deserted, Fort
Huts; permanent; temporary, Tower, Antiquities
Temple, Chhatri, Church, Mosque, Idgah, Tomb, Graves
Lighthouses, Lightships, Buoys; lighted; unlighted, Anchorage
Mine, Vine on trellis, Grass, Scrub
Palms; palmyra; other, Plantain, Cofee, Bamboo, Other trees
Areas; cultivated; wooded, Surveyed tree
Boundary, international
state demarcated, undemarcated
district, subdivision, taluk or taluk forest
Boundary pillars; surveyed; uncoloured
Height, triangulated; station; point; approximate
Bench-mark; geodetic; tertiary; canal
Post office, Telegraph office, Overhead tank
Rest house or inspection bungalow, Circuit house, Police station
Camping ground, Forest; reserved; protected
Spaced names; administrative; locality or tribal
Hospital, Dispensary, Veterinary, Hospital / Dispensary
Aerodrome, Helipad, Tourist site
Power line; with pylons surveyed; with poles unsurveyed

REFERENCE

NH 12A National Highway No. 12A.

NOTES :-

- Heights are in metres and above Indian mean sea level.
Contours are approximate.
A relative height, 30, represents the approximate height, in metres, between the top and bottom of a steep slope.
The NW quarter of the area appearing on this sheet is magnetically disturbed and the variation given may differ largely from the actual value.

COMPILATION INDEX

A. Surveyed during 1971-72, Updated for major details during 2005-06.



Projection - UTM Datum - WGS 84

Magnetic Variation from True North about 1/2° West in 2005.
(Decreasing by about 1' annually).

1:50,000

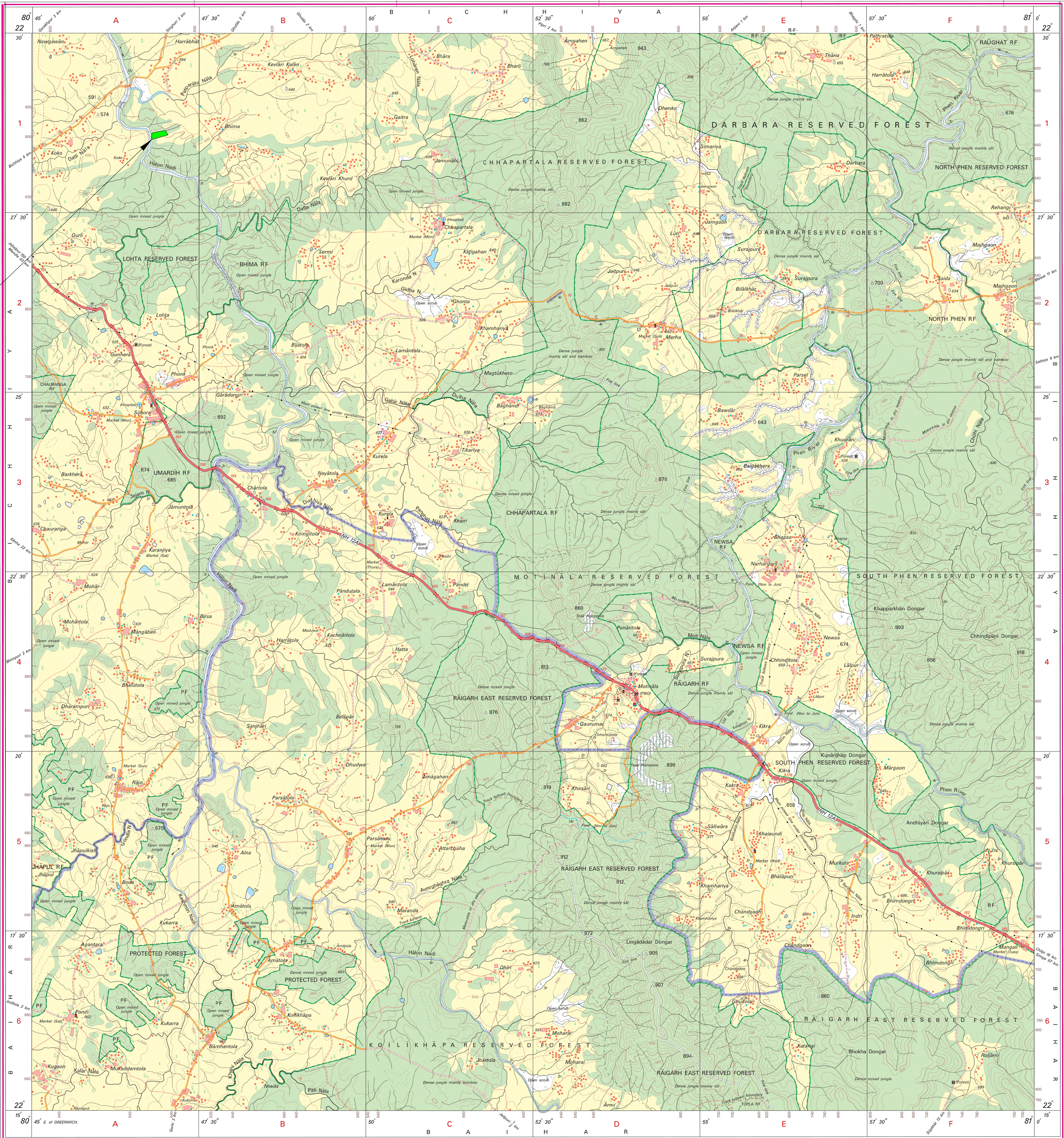
500 m to 1 cm
Metres 1000 500 0 1 2 3 Kilometres
CONTOUR INTERVAL 20 METRES

For further details about this map, please contact
Director
Madhya Pradesh Geo-Spatial Data Centre
Survey of India
Survey Colony, Vijaynagar
Jabalpur.

WEBSITE - www.surveyofindia.gov.in

Reproduction in whole or part by any means is prohibited
without the written permission of Survey of India, the
National Mapping Agency.

GOVERNMENT OF INDIA COPYRIGHT, 2011.



REG. No. -SPG D 11 (Madhya Pradesh GDC-1:50,000-)

भारत के भूगोलीय सर्वेक्षण विभाग, जे.डी.डी. के. विभाग के प्रकाशित।
Published under the direction of Swarna Subba Rao, B.E., Surveyor General of India,
Survey of India, Hathi Bank Estate, Post Box No. 37, Dehra Dun - 248001 (Uttarakhand),
Department of Science & Technology, Government of India.

PRINTED AT THE SOUTHERN PRINTING GROUP OF SURVEY OF INDIA.