

NEPĀL UTTAR PRADESH

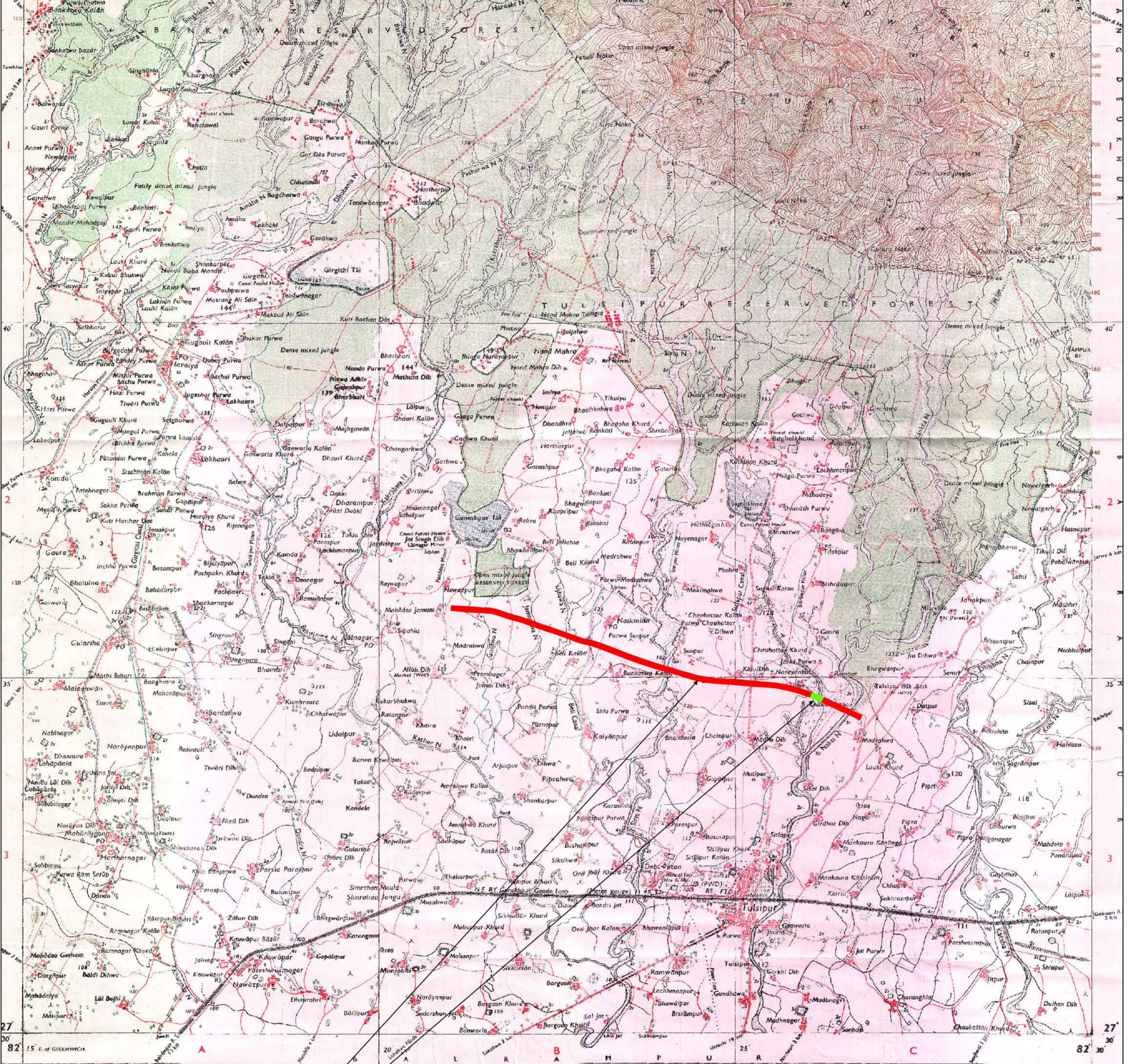
DĀNG DEUKHURI DISTRICT.
GONDA DISTRICT.

Surveyed 1959-60.

Magnetic Variation from True North about 1° West in 1953.
(Increasing by about 3" annually).

No. 63 1/6

Proposed Reserved Forest Land to be Diverted For construction of Rapti Main Canal in forest land between Km. 71.4900 to 72.3000 km, in Tehsil: Tulsipur, District: Balrampur (U.P.)



Published under the direction of the Surveyor General of India
1961.
1:50,000

Administrative index:
GONDA U.P.
DĀNG DEUKHURI, N.

Heights & Contours in Metres.
Contour Interval 20 Metres.

Water features are shown in blue where they generally contain water.
Cultivated areas are coloured yellow.
The exterior boundaries of areas of Reserved or Protected Forests are shown by green ribbons.

Contours are approximate.
A relative height, Δ , represents the approximate height in metres between the top and bottom of a steep slope.
Wooded areas are coloured green. Scattered trees and other vegetation are in green, but prominent surveyed trees are in black.

*Not applicable.

Forest areas in Nepal are Government Reserves. Their names and boundaries are not known nor are the boundaries demarcated on the ground.
Boundaries of subdivisions of districts in Nepal have not been shown for want of reliable information.
Distance zones along railways and roads are in miles.
All unmetalled roads are motorable in dry season. Permission to use the roads in Reserved Forest areas and those along the canal is required from the authorities concerned.
Canal distance stones are 5,000 feet apart.

GOVERNMENT OF INDIA COPYRIGHT, 1961.

Proposed Reserved Forest Land to be diverted
Non Forest Land

अविशासी अभियन्ता
राप्ती नहर निर्माण खाण्ड पञ्चम
तुलसीपुर