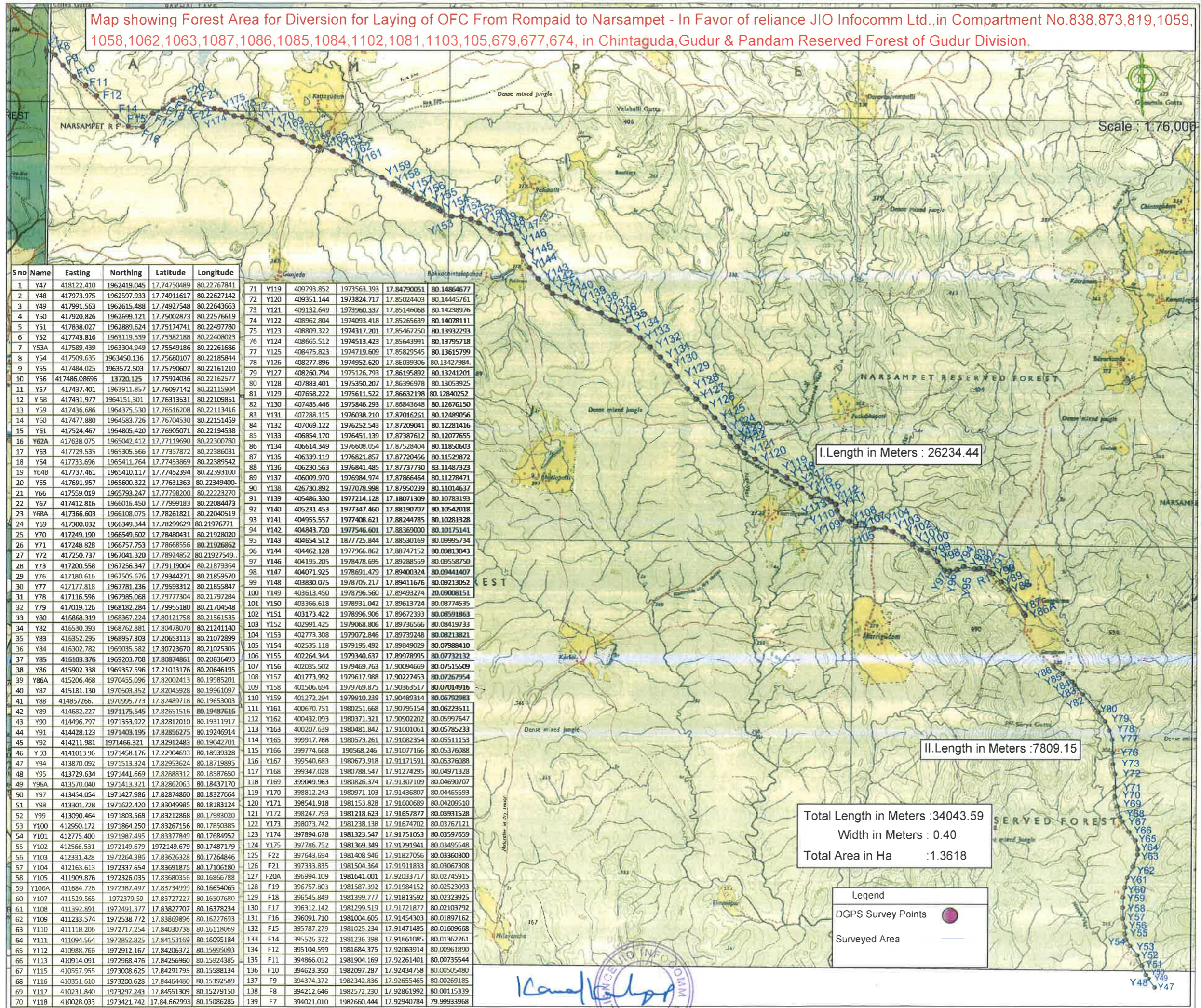


Map showing Forest Area for Diversion for Laying of OFC From Rompaid to Narsampet - In Favor of reliance JIO Infocomm Ltd., in Compartment No.838,873,819,1059, 1058,1062,1063,1087,1086,1085,1084,1102,1081,1103,105,679,677,674, in Chintaguda,Gudur & Pandam Reserved Forest of Gudur Division.



S no	Name	Easting	Northing	Latitude	Longitude
1	Y47	418122.410	1962419.045	17.74750489	80.22767841
2	Y48	417973.975	1962597.933	17.74911617	80.22627142
3	Y49	417991.563	1962615.488	17.74927548	80.22643663
4	Y50	417920.826	1962699.121	17.75002873	80.22576619
5	Y51	417838.027	1962889.624	17.75174741	80.22497780
6	Y52	417743.816	1963119.539	17.75382188	80.22408023
7	Y53A	417589.439	1963304.949	17.75549186	80.22261686
8	Y54	417509.635	1963450.136	17.75680107	80.22185844
9	Y55	417484.025	1963572.503	17.75790607	80.22161210
10	Y56	417486.08696	13720.125	17.75924036	80.22162577
11	Y57	417437.401	1963911.857	17.76097142	80.22115904
12	Y58	417431.977	1964151.301	17.76313531	80.22109851
13	Y59	417436.686	1964375.530	17.76516208	80.22113416
14	Y60	417477.880	1964583.726	17.76704530	80.22151459
15	Y61	417524.467	1964805.420	17.76905071	80.22194538
16	Y62A	417638.075	1965042.412	17.77119690	80.22300780
17	Y63	417729.535	1965305.566	17.77357872	80.22386031
18	Y64	417733.696	1965411.764	17.77453869	80.22389542
19	Y64B	417737.461	1965410.117	17.77452394	80.22393100
20	Y65	417691.957	1965600.322	17.77631363	80.22349400
21	Y66	417559.019	1965793.247	17.77798200	80.22232270
22	Y67	417412.816	1966016.450	17.77999183	80.22084473
23	Y68A	417366.603	1966108.075	17.78261821	80.22040519
24	Y69	417300.032	1966349.344	17.78299629	80.21976771
25	Y70	417249.190	1966549.602	17.78480431	80.21928020
26	Y71	417248.828	1966757.753	17.78668556	80.21926862
27	Y72	417250.737	1967041.320	17.78924852	80.21927549
28	Y73	417200.558	1967256.347	17.79119004	80.21879364
29	Y76	417180.616	1967505.676	17.79344271	80.21859570
30	Y77	417177.818	1967781.236	17.79593312	80.21855847
31	Y78	417116.596	1967985.068	17.79777304	80.21797284
32	Y79	417019.126	1968182.284	17.79955180	80.21704548
33	Y80	416868.319	1968367.224	17.80121758	80.21561535
34	Y82	416530.393	1968762.881	17.80478070	80.21241140
35	Y84	416352.295	1968957.303	17.80653113	80.21072899
36	Y84	416302.782	1969035.582	17.80723670	80.21025305
37	Y85	416103.376	1969203.708	17.80874861	80.20836493
38	Y86	415902.338	1969357.596	17.81013176	80.20646195
39	Y86A	415206.468	1970455.096	17.82002413	80.19985201
40	Y87	415181.130	1970503.352	17.82045928	80.19961097
41	Y88	414857.266	1970995.773	17.82489718	80.19653003
42	Y89	414682.227	1971175.545	17.82651516	80.19487616
43	Y90	414496.797	1971353.922	17.82812010	80.19311917
44	Y91	414428.123	1971403.195	17.82856275	80.19246914
45	Y92	414211.981	1971466.321	17.82912483	80.19042701
46	Y93	4141013.96	1971458.176	17.82904693	80.18939328
47	Y94	413870.092	1971513.324	17.82953624	80.18719895
48	Y95	413729.634	1971441.669	17.82888312	80.18587650
49	Y96A	413570.040	1971413.321	17.82862063	80.18437170
50	Y97	413454.054	1971427.986	17.82874860	80.18327664
51	Y98	413301.728	1971622.420	17.83049985	80.18183124
52	Y99	413090.464	1971803.568	17.83212868	80.17983020
53	Y100	412950.172	1971864.250	17.83267156	80.17850385
54	Y101	412775.400	1971987.495	17.83377849	80.17684952
55	Y102	412566.531	1972149.679	17.83521497	80.17487179
56	Y103	412331.428	1972264.386	17.83626328	80.17264846
57	Y104	412163.613	1972337.654	17.83691875	80.17106180
58	Y105	411909.876	1972326.035	17.83680356	80.16866788
59	Y106A	411684.726	1972387.497	17.83734999	80.16654065
60	Y107	411529.565	1972379.59	17.83727227	80.16507680
61	Y108	411392.891	1972491.377	17.83827707	80.16378234
62	Y109	411233.574	1972538.772	17.83869896	80.16227693
63	Y110	411118.206	1972717.254	17.84030738	80.16118069
64	Y111	411094.564	1972852.825	17.84153169	80.16095184
65	Y112	410988.766	1972912.167	17.84206372	80.15995093
66	Y113	410914.091	1972968.476	17.84256960	80.15924385
67	Y115	410557.955	1973008.625	17.84291795	80.15588134
68	Y116	410351.610	1973200.628	17.84464480	80.15392589
69	Y117	410231.840	1973297.243	17.84551309	80.15279150
70	Y118	410028.033	1973421.742	17.84662993	80.15086285
71	Y119	409793.852	1973563.393	17.84790051	80.14864677
72	Y120	409351.144	1973824.717	17.85024403	80.14445761
73	Y121	409132.649	1973960.337	17.85146068	80.14238976
74	Y122	408962.804	1974093.418	17.85265639	80.14078111
75	Y123	408809.322	1974317.201	17.85467250	80.13932293
76	Y124	408665.512	1974513.423	17.85643991	80.13795718
77	Y125	408475.823	1974719.609	17.85829545	80.13615799
78	Y126	408277.896	1974952.620	17.86039306	80.13427984
79	Y127	408260.794	1975126.793	17.86195892	80.13241201
80	Y128	407883.401	1975350.207	17.86396978	80.13053925
81	Y129	407658.222	1975611.522	17.86632198	80.12840252
82	Y130	407485.446	1975846.293	17.86843648	80.12676150
83	Y131	407288.115	1976038.210	17.87016261	80.12489056
84	Y132	407069.122	1976252.543	17.87209041	80.12281416
85	Y133	406854.170	1976451.139	17.87387612	80.12077655
86	Y134	406614.349	1976608.054	17.87528404	80.11850603
87	Y135	406339.119	1976821.857	17.87720456	80.11529872
88	Y136	406230.563	1976841.485	17.87737730	83.11487323
89	Y137	406009.970	1976984.974	17.87866464	80.11278471
90	Y138	426730.892	1977078.998	17.87950239	80.11014637
91	Y139	405486.330	1977214.128	17.88071309	80.10783193
92	Y140	405231.453	1977347.460	17.88190707	80.10542018
93	Y141	404955.557	1977408.621	17.88244785	80.10281328
94	Y142	404843.720	1977546.601	17.88369000	80.10175141
95	Y143	404654.512	1877725.844	17.88530169	80.09995734
96	Y144	404462.128	1977966.862	17.88747152	80.09813043
97	Y146	404195.205	1978478.695	17.89288559	80.09587500
98	Y147	404071.925	1978691.479	17.89400324	80.09441407
99	Y148	403830.075	1978705.217	17.89411676	80.09213052
100	Y149	403613.450	1978796.560	17.89493274	80.09008151
101	Y150	403366.618	1978931.042	17.89613724	80.08774535
102	Y151	403173.422	1978996.906	17.89672393	80.08591863
103	Y152	402991.425	1979068.806	17.89736566	80.08419733
104	Y153	402773.308	1979072.846	17.89739248	80.08213821
105	Y154	402535.118	1979195.492	17.89849029	80.07988410
106	Y155	402264.344	1979340.637	17.89978995	80.07732132
107	Y156	402035.502	1979469.763	17.90094669	80.07515509
108	Y157	401773.992	1979617.988	17.90227453	80.07267954
109	Y158	401506.694	1979769.875	17.90363517	80.07014916
110	Y159	401272.294	1979910.239	17.90489314	80.06792983
111	Y161	400670.751	1980251.668	17.90795154	80.06223511
112	Y162	400432.093	1980371.321	17.90902202	80.05997647
113	Y163	400207.639	1980481.842	17.91001061	80.05785233
114	Y165	399917.768	1980573.261	17.91082354	80.05511153
115	Y166	399774.668	198068.246	17.91077166	80.05376088
116	Y167	399540.683	1980673.918	17.91171591	80.05376088
117	Y168	399347.028	1980788.547	17.91274295	80.04971328
118	Y169	399049.963	1980826.374	17.91307109	80.04690707
119	Y170	398812.243	1980971.103	17.91436807	80.04465599
120	Y171	398541.918	1981153.828	17.91600689	80.04209510
121	Y172	398247.793	1981218.623	17.91657877	80.03931528
122	Y173	398073.742	1981238.138	17.91674702	80.03767121
123	Y174	397894.678	1981323.547	17.91751053	80.03597659
124	Y175	397786.752	1981369.349	17.91791941	80.03495548
125	F22	397643.694	1981408.946	17.91827056	80.03360300
126	F21	397333.835	1981504.364	17.91918333	80.03067308
127	F20A	396994.109	1981641.001	17.92033717	80.02745915
128	F19	396757.803	1981587.392	17.91984152	80.02523093
129	F18	396545.849	1981399.777	17.91813592	80.02323925
130	F17	396312.142	1981299.519	17.91721877	80.02103792
131	F16	396091.710	1981004.605	17.91454303	80.01897162
132	F15	395787.279	1981025.234	17.91471495	80.01609668
133	F14	395526.322	1981236.398	17.91661085	80.01362261
134	F12	395104.599	1981684.375	17.92063914	80.00961890
135	F11	394866.012	1981904.169	17.92261401	80.00735544
136	F10	394623.350	1982097.287	17.92434758	80.00505480
137	F9	394374.372	1982342.836	17.92655465	80.00269185
138	F8	394212.646	1982572.230	17.92861992	80.00115339
139	F7	394021.010	1982660.444	17.92940784	79.99933968

I.Length in Meters : 26234.44

II.Length in Meters : 7809.15

Total Length in Meters : 34043.59

Width in Meters : 0.40

Total Area in Ha : 1.3618

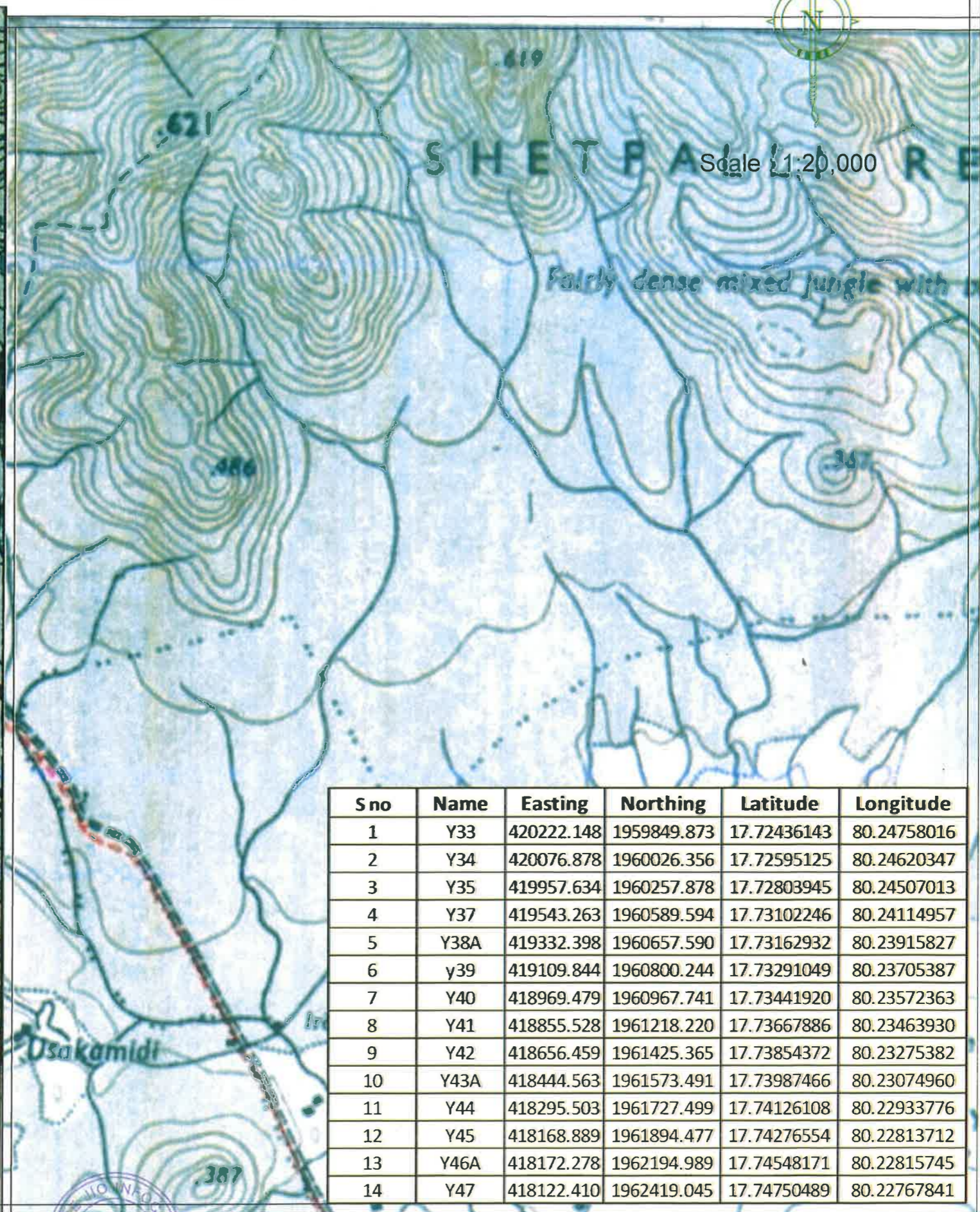
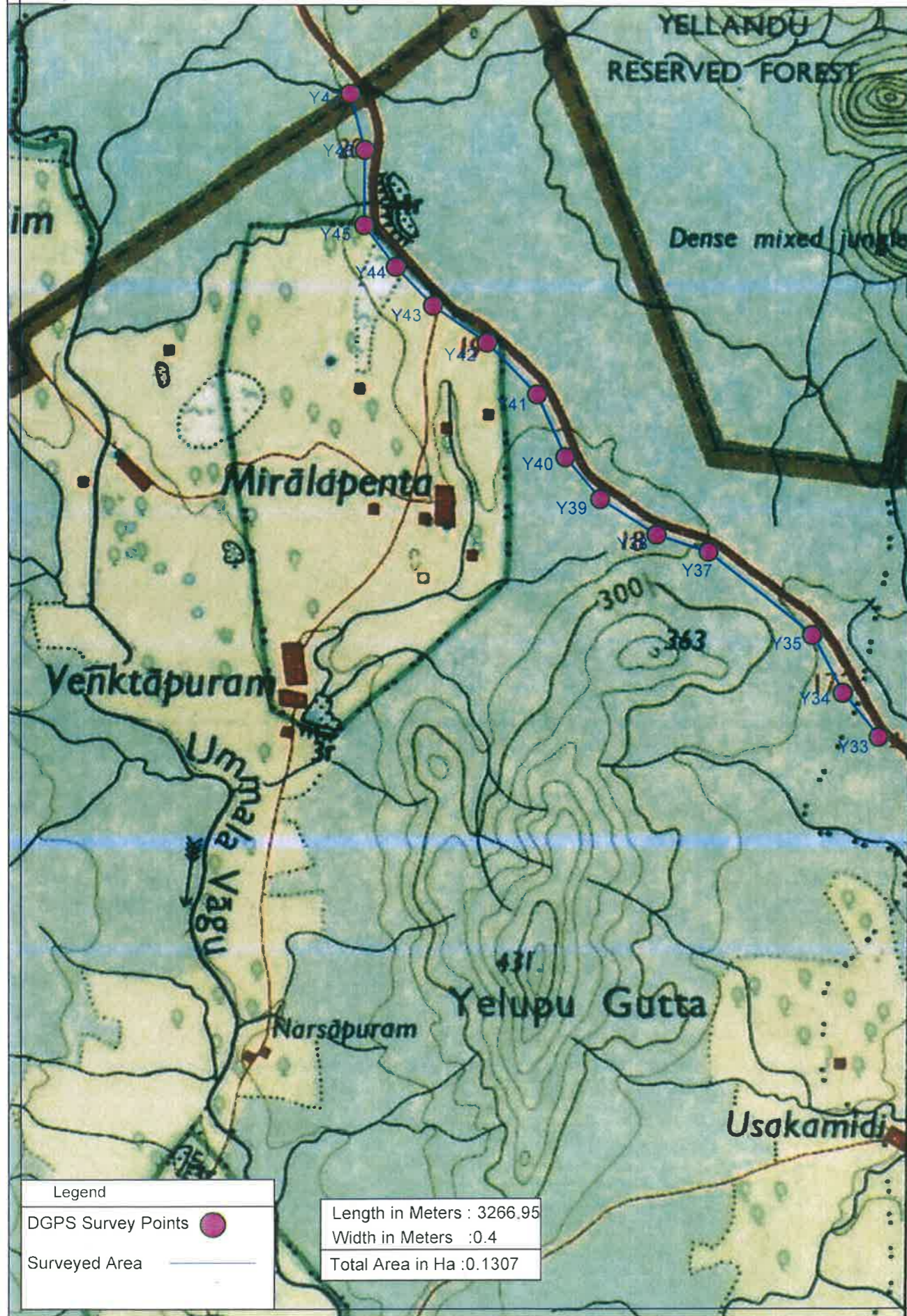
Legend

- DGPS Survey Points
- Surveyed Area



Map showing Forest Area for Diversion for Laying of OFC From Rompaid to Narsampet- in favour of Reliance JIO Infocomm Ltd., in Compartment No.104/1,101 in Miryalapenta Reserved Forest of Mahabubabad Division.



Scale 1:20,000



S no	Name	Easting	Northing	Latitude	Longitude
1	Y33	420222.148	1959849.873	17.72436143	80.24758016
2	Y34	420076.878	1960026.356	17.72595125	80.24620347
3	Y35	419957.634	1960257.878	17.72803945	80.24507013
4	Y37	419543.263	1960589.594	17.73102246	80.24114957
5	Y38A	419332.398	1960657.590	17.73162932	80.23915827
6	y39	419109.844	1960800.244	17.73291049	80.23705387
7	Y40	418969.479	1960967.741	17.73441920	80.23572363
8	Y41	418855.528	1961218.220	17.73667886	80.23463930
9	Y42	418656.459	1961425.365	17.73854372	80.23275382
10	Y43A	418444.563	1961573.491	17.73987466	80.23074960
11	Y44	418295.503	1961727.499	17.74126108	80.22933776
12	Y45	418168.889	1961894.477	17.74276554	80.22813712
13	Y46A	418172.278	1962194.989	17.74548171	80.22815745
14	Y47	418122.410	1962419.045	17.74750489	80.22767841

Legend
 DGPS Survey Points 
 Surveyed Area 

Length in Meters : 3266.95
 Width in Meters : 0.4
 Total Area in Ha : 0.1307

