

नियत के लिए नहीं NOT FOR EXPORT

DEHRA DUN AND SAHARANPUR DISTRICTS.

Surveyed 1965-66.

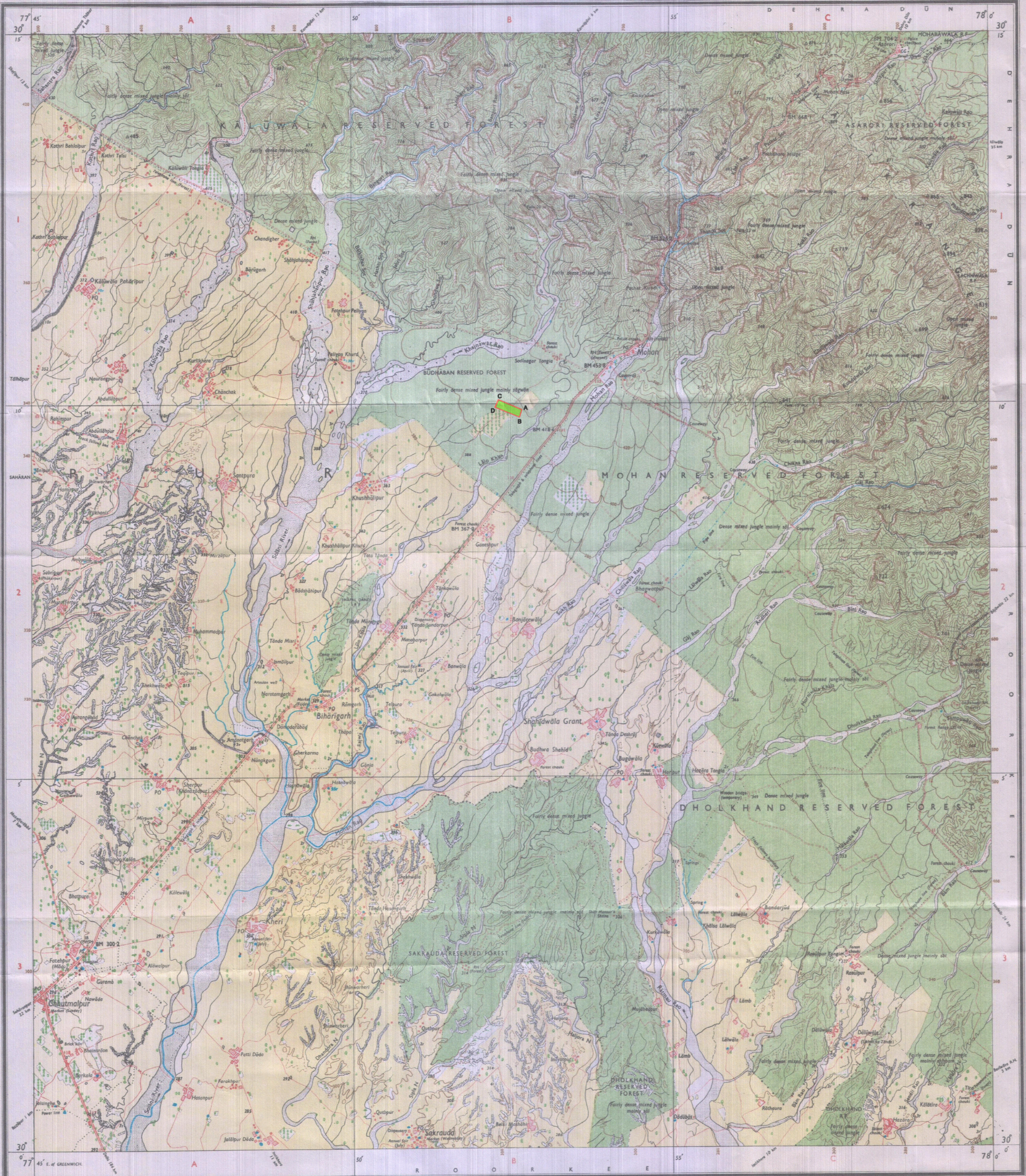
UTTAR PRADESH

FIRST EDITION

Magnetic Variation from True North about 1/2° East in 1965. (Decreasing by about 2' annually)

INDIA REFER TO THIS MAP AS 1:50,000 SHEET 53 F/16 FIRST EDITION

No. 53 F/16



REG. No. 2191-NPGD/88N.D.1.33.3331-581273-220677-3626079-830681-310485-9009-94-50-08/Reprint/50/1967

Published under the direction of Brigadier J. A. F. Dhill, B.A. (Hons.), p.r.c., M.S. M.C., Officiating Surveyor General of India, 1969.

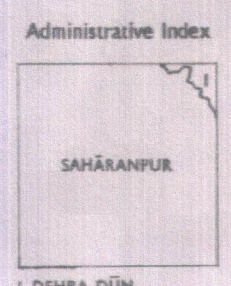


Table with 2 columns: Symbol and Description. It lists various symbols used on the map for towns, forests, rivers, and other features.

Table with 2 columns: Symbol and Description. It lists various symbols used on the map for roads, bridges, streams, and other features.

Table with 2 columns: Symbol and Description. It lists various symbols used on the map for wells, tanks, and other features.

1:50,000

HEIGHTS & CONTOURS IN METRES

CONTOUR INTERVAL 20 METRES

REFER TO THIS MAP AS 1:50,000 SHEET 53 F/16 FIRST EDITION INDIA

GPS COORDINATE OF KHAJWARA CA LAND A,X=777743.24,Y=3340973.04 B,X=777690.69,Y=3340785.25 C,X=777168.50,Y=3341233.44 D,X=777083.97,Y=3341044.09

The triangulated heights and contours in this sheet have not been adjusted to the heights of the spirit-levelled bench-marks, and are not strictly in accordance with them. The contour lines along the road are shown in solid type, e.g., '2' whereas milestone numbers are shown in upright type, e.g., '5'. The common boundaries between Reserved/Protected Forests in some cases, have not been shown for want of reliable information. A relative height, e.g., '30', against a well, in blue, indicates its total depth in metres. Shaded roads inside the forest areas are motorable in dry season. Permission to use forest roads is required from the Forest authorities. Shaded roads inside the forest areas are motorable in dry season. Permission to use forest roads is required from the Forest authorities.

Handwritten signature and date: 28/12/2018

GOVERNMENT OF INDIA COPYRIGHT, 1969. Price: Twenty-five Rupees.