

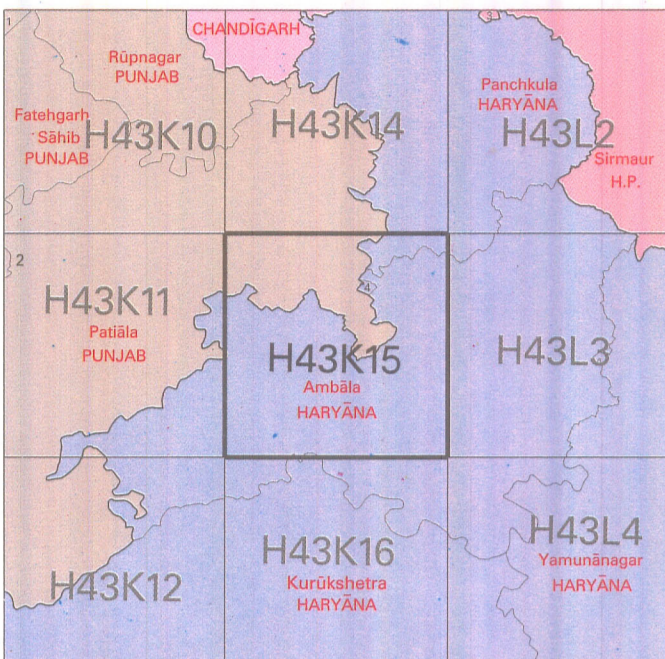


NOT FOR EXPORT

OPEN SERIES MAP

No. H43K15

Scale 1:50,000



- 1 Rupnagar, PUNJAB. 3 Solan, HIMACHAL PRADESH.
2 Fatehgarh Sahib, PUNJAB. 4 Panchkula, HARYANA.

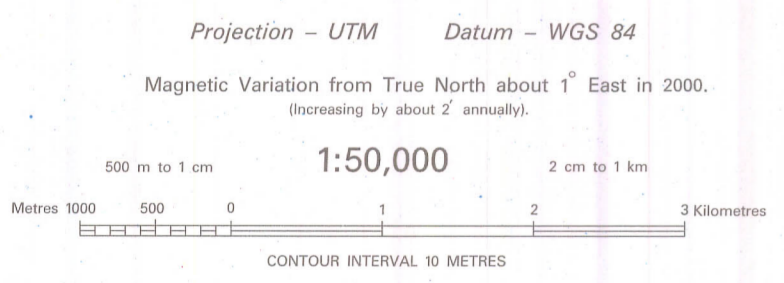
भारतीय सर्वेक्षण विभाग SURVEY OF INDIA
1st Edition 2006. Price: Rs. 94/-

Table of CONVENTIONAL SYMBOLS including Express highway, Roads, Unmetalled road, Streams, Dams, Rivers, Wells, Embankments, Railways, Mineral line, Contours, Sand features, Towns or Villages, Huts, Temples, Lighthouses, Mine, Palms, Areas, Boundary, Boundary pillars, Heights, Bench-mark, Post office, Rest house, Camping ground, Spaced names, Hospital, Aerodrome, Power line.

REFERENCES: NH-1 National Highway No. 1

NOTES: Heights and contours are in metres and above Indian mean sea level. Contours are approximate. The course of Daintri Nadi, Ghagghar and Markanda Rivers are liable to continual change owing to shifting of the river bed.

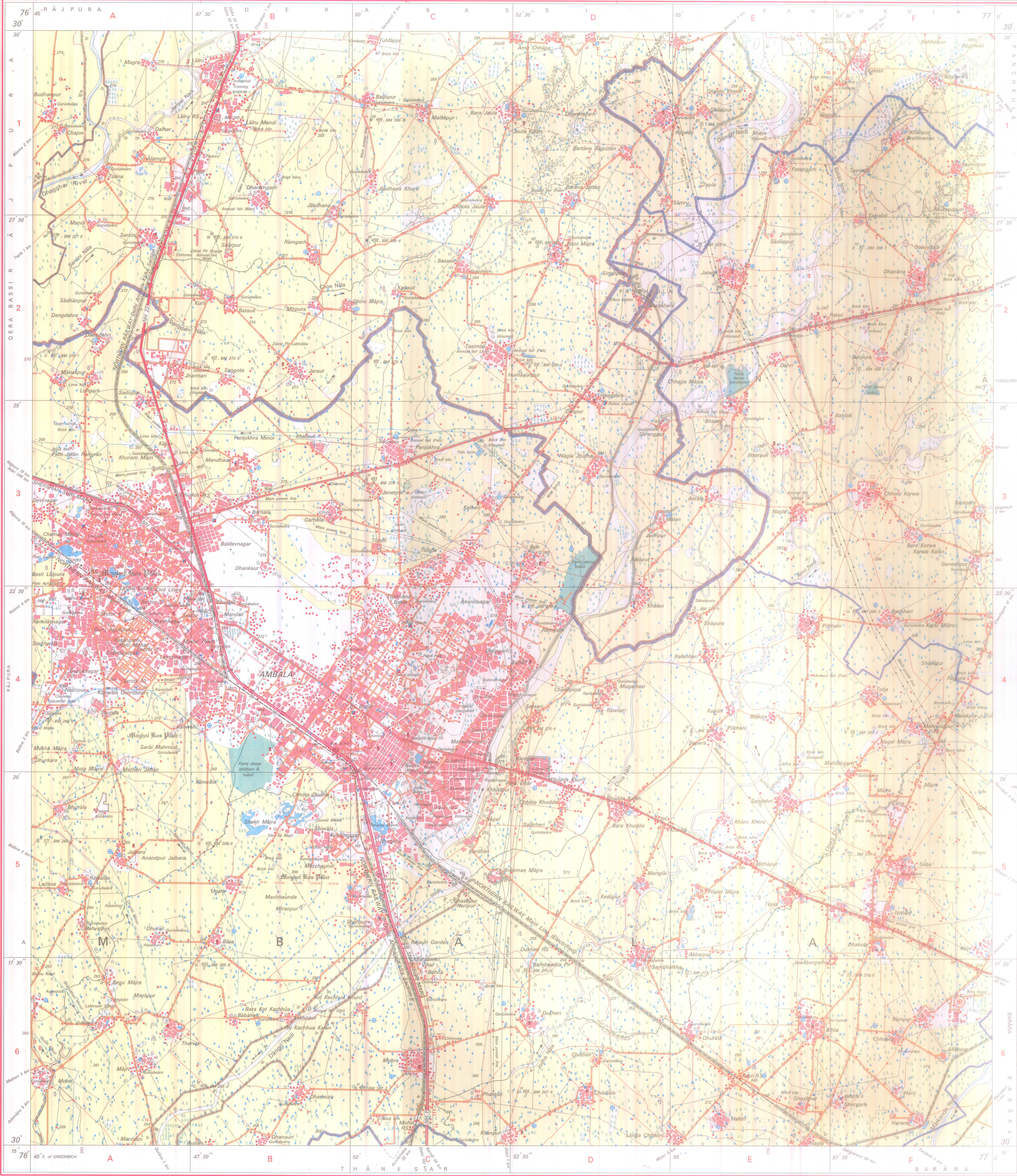
COMPILATION INDEX: A. Compiled from 1:25,000 survey of 1997-98.



For further details about this map, please contact Director Punjab & Chandigarh Geo-Spatial Data Centre Survey of India, Sector 32 A Chandigarh. Fax: 0172-2606916

WEBSITE - www.surveyofindia.gov.in

Reproduction in whole or part by any means is prohibited without the written permission of Survey of India, the National Mapping Agency.



REG. No. 03(6)-WPS D 96 (P&C GDC-1:50,000-1516)

भारत के नक्शासंकेत केन्द्र जनरल एण्ड स्पेशल एण्ड, सी.टी.डी.पी. (रिजिस्टर फोर्ट), एण्ड आर्किटेक्चरल, एण्ड ऑफिस, के विजय नगर प्रकल्प, Published under the direction of Major General M. Gopal Rao, B.Tech., P.C.Dip. (Aerial Photo), M.M.E., M.C.A., F.S. Surveyor General of India, Survey of India, Hishibarkala Estate, Post Box No. 37, Dehra Dun - 248001 (Utaranchal) Department of Science & Technology, Government of India.

PRINTED AT THE WESTERN PRINTING GROUP OF SURVEY OF INDIA.