

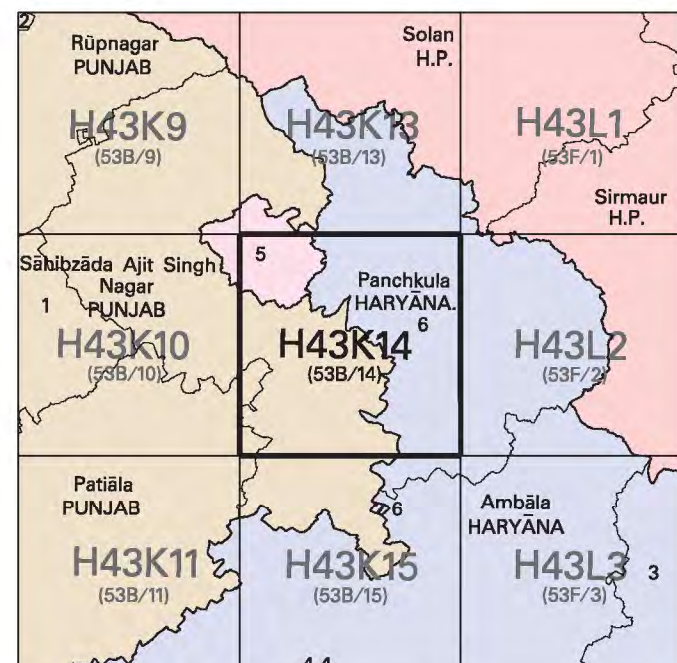


निर्यात के लिए नहीं NOT FOR EXPORT

OPEN SERIES
MAP

No. H43K14

Scale 1:50,000



भारतीय सर्वेक्षण विभाग

SURVEY OF INDIA

1st Edition 2010.

Price : Rs. 50/-

CONVENTIONAL SYMBOLS



REFERENCES

NH 73 National Highway No. 73. City: Chimney.

NOTES

Heights are in metres and above Indian mean sea level.
Contours are approximate.
The administrative headquarters of Haryana and Punjab States are at Chandigarh.
The state boundaries between Chandigarh (U.T.) & Punjab, Chandigarh (U.T.) & Haryana, Haryana & Punjab States have been surveyed as pointed out by the local officials on the ground but has not been verified by the Government concerned.
Tanks, shown dry, in this area usually contain water from July to March.
Tube-wells are numerous in plain area of this sheet, only the important ones have been shown.
Sector numbers in Chandigarh, S.A.S. Nagar (Mohali) and Panchkula city areas are indicated by blue figures thus ... 100 ...
Cart-track along Baran Canal is motorable in dry season. Permission to use it is required from the irrigation authorities.
The contours in this map have been shown at 10 metres vertical interval below 360 metres and 20 metres above it.
3,000-acre reclamation scheme of Bhakra Dam Project Survey based on Origin 30° 00' N, 75° 15' E with their numbers are shown as tertiary bench-marks thus ... 10 428, BM 290-1.

COMPILED INDEX

A. Compiled from 1:25,000 survey, 1985-86.
Updated for major details during 2005-06.

Projection - UTM Datum - WGS 84

Magnetic Variation from True North about 1° East in 2005.
(Increasing by about 1° annually).

1:50,000

500 m to 1 cm 2 cm to 1 km
3 Kilometres

CONTOUR INTERVAL 10 / 20 METRES

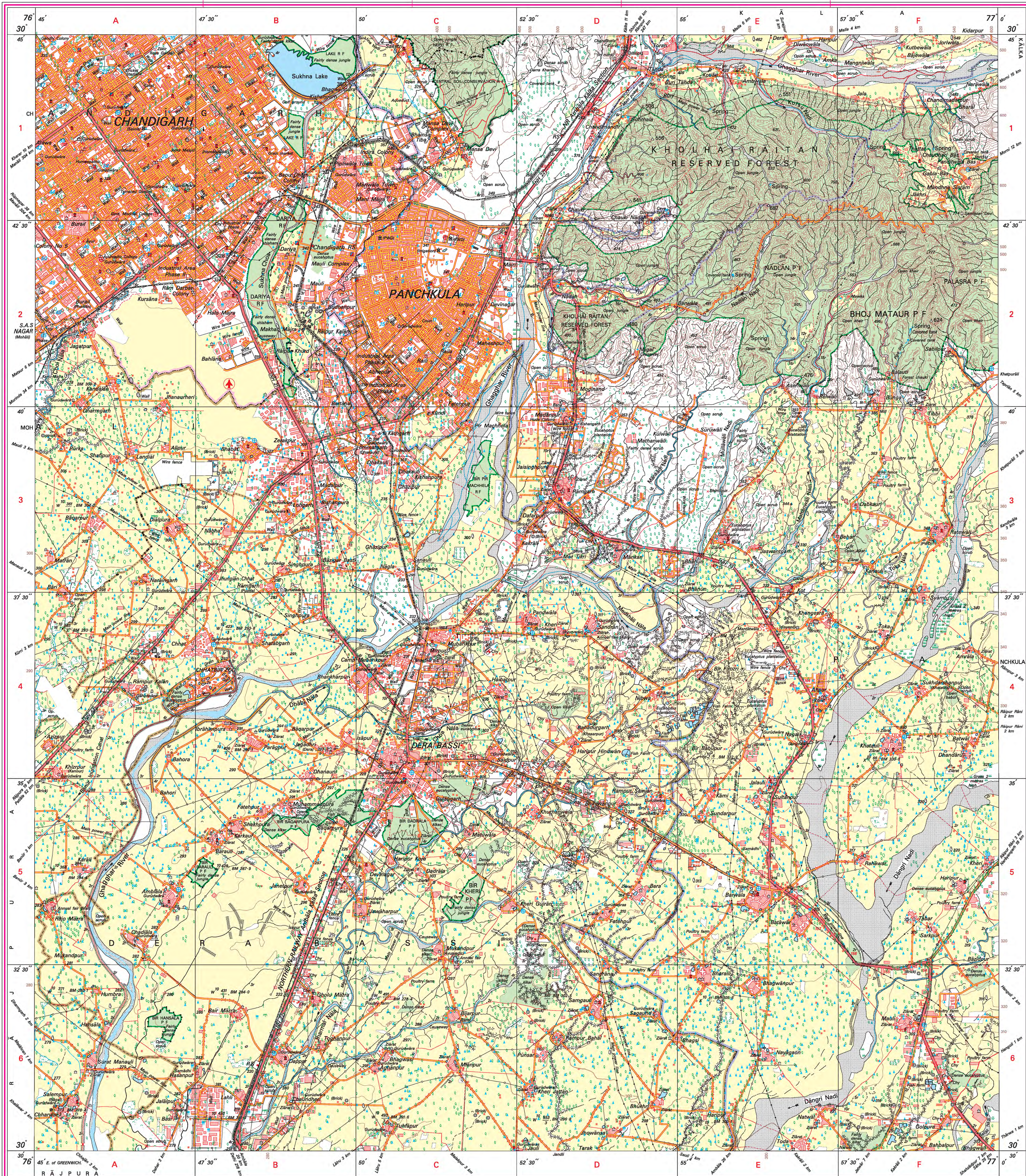
For further details about this map, please contact

Director
Punjab, Haryana & Chandigarh Geo-Spatial Data Centre
Survey of India, Sector 32 A
Chandigarh.
Fax : 0172 - 2604671

WEBSITE - www.surveyofindia.gov.in

Reproduction in whole or part by any means is prohibited
without the written permission of Survey of India, the
National Mapping Agency.

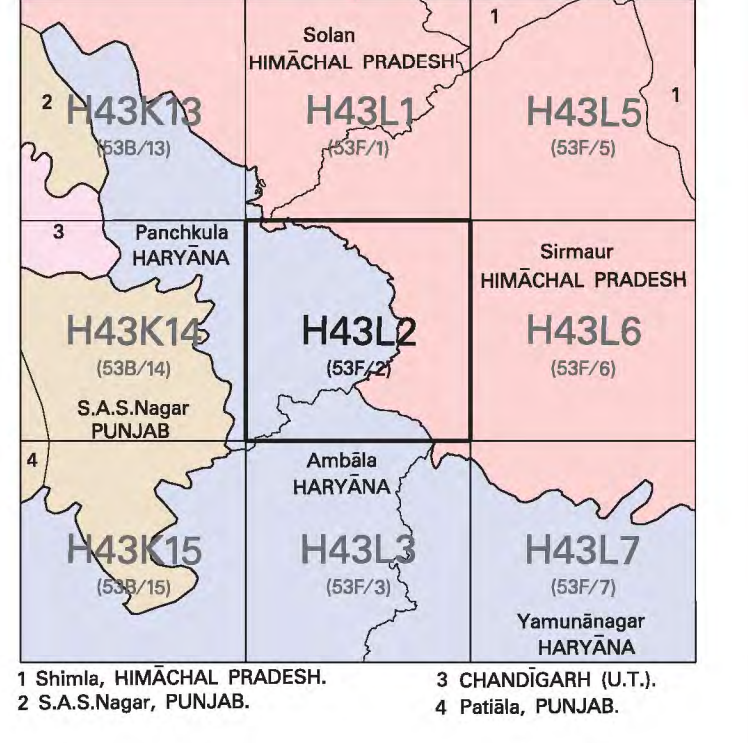
GOVERNMENT OF INDIA. COPYRIGHT, 2010.



REG. No. - WPG D 10 (P.H. & C. GDC-1:50,000)

भारत के महानगरिक में प्रकाशित,
Published under the direction of Surveyor General of India,
Survey of India, Hoshanwala Estate, Post Box No. 37, Darya Durrani 248001 (Uttarakhand),
Department of Science & Technology, Government of India.

PRINTED AT THE WESTERN PRINTING GROUP OF SURVEY OF INDIA.



CONVENTIONAL SYMBOLS

Express highway; with toll; with bridge; with distance stone

Roads, metalled; according to importance

Roads, double cartilage-way; according to importance

Unmetalled road. Cart-track. Pack-track with pass. Foot-path.

Streams: with track in bed; undefined. Canal

Dams: masonry or rock-filled; earthwork. Weir

River: dry with water channel; with island & rocks. Tidal river

Submerged rocks. Shoal. Swamp. Reeds

Wells: lined; unfired. Tube-well. Spring. Tanks: perennial; dry

Embankments: road or rail; tank. Broken ground

Railways, broad gauge: double; single with station under constr.

Railways, other gauges: double; single with distance stone; do

Mineral line or tramway. Kln. Cutting with tunnel

Contours with sub-features. Rocky slopes. Cliffs

Sand features: (1)flat.(2)sand-hills (permanent). (3)dunes(shifting)

Towns or Villages: inhabited; deserted. Fort

Notes: permanent; temporary. Tower. Antiquities

Temple. Chhatra. Church. Mosque. Idgah. Tomb. Graves

Lighthouse. Lightship. Buoys: lighted; unlighted. Anchorage

Mine. Vine on trellis. Grass. Scrub

Palms: palm; other. Plantain. Conifer. Bamboo. Other trees

Areas: cultivated; wooded. Surveyed tree

Boundary, international

state: demarcated; undemarcated

district; subdivision, tahsil or taluk; forest

Boundary pillars: surveyed; unlocated

Heights, triangulated: station; point; approximate

Bench-mark: geodetic; tertiary; canal

Post office. Telegraph office. Overhead tank

Rest house or inspection bungalow. Circuit house. Police station

Camping ground. Forest: reserved; protected

Spaced names: administrative; locality or tribal

Hospital. Dispensary. Veterinary: Hospital/Dispensary

Aerodrome. Helipad. Tourist site

Power line: with pylons surveyed; with poles unsurveyed

REFERENCE

NH 72 National Highway No. 72

NOTES :-

Contours are approximate.

The triangulated heights and contours in this sheet have not been adjusted to the heights of the semi-levelled bench-marks and may not be strictly in accordance with them.

A relative height, Δ , represents the approximate height, in metres, between the top and bottom of a steep slope.

The exterior boundaries of areas of Reserved or Protected forests are shown by green ribands.

Tanks in this area usually contain water from July to December.

Water features are shown in blue where they generally contain water.

COMPILATION INDEX

A Compiled from 1:25,000 scale survey, carried out during 1984-85.
Updated for major details during 2004-05.

Projection – UTM Datum – WGS 84

Magnetic Variation from True North about 1° East in 2005.
(increasing by about 1° annually).

1:50,000

500 m to 1 cm

2 cm to 1 km

3 Kilometres

CONTOUR INTERVAL 20 METRES

For further details about this map, please contact
Director
Himachal Pradesh Geo-Spatial Data Centre
Survey of India, Sector 32 A
Chandigarh.

