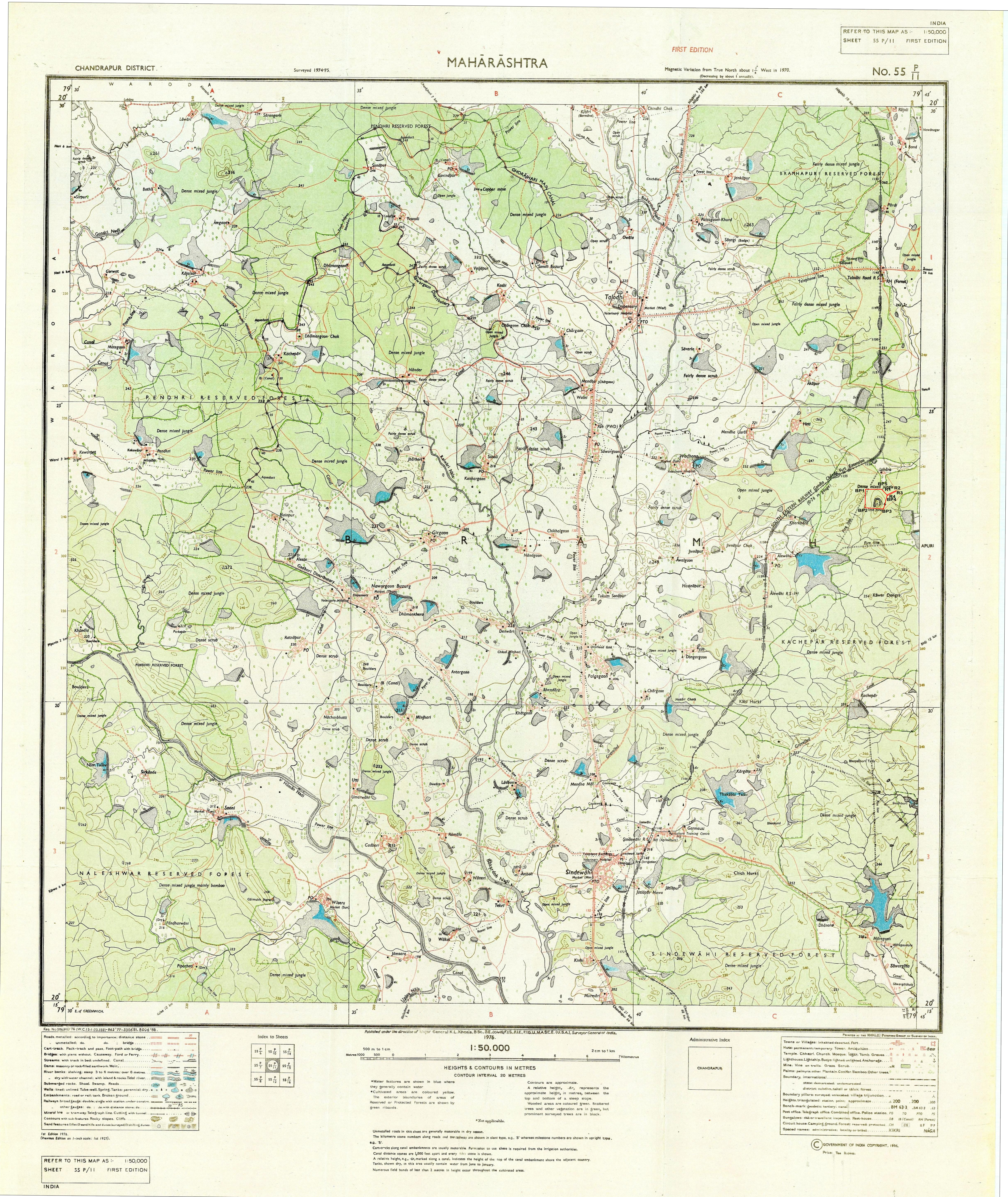


PROPOSAL FOR DIVERSION OF 35.94 FOREST LAND IN FAVOUR OF SUNFLAG IRON & STEEL COMPANY IN LOHARDONGRI IRON ORE BLOCK,
TALUKA BRAMHAPURI, DISTRICT CHANDRAPUR IN THE STATE OF MAHARSHTRA.



MINING AREA (AREA 35.73 HA)			
SR. NO.	BP	LATITUDE DMS	LONGITUDE DMS
01	BP1	20°23'37.17"N	79°43'58.97"E
02	BP2	20°23'18.79"N	79°43'58.73"E
03	BP3	20°23'17.65"N	79°44'18.31"E
04	BP4	20°23'31.51"N	79°44'22.11"E
06	BP5	20°23'37.29"N	79°44'16.10"E

APPROACH ROAD (AREA 0.21 HA)			
SR. NO.	R	LATITUDE DMS	LONGITUDE DMS
01	R01	20°23'31.53"N	79°44'22.11"E
02	R02	20°23'35.53"N	79°44'31.72"E
03	R03	20°23'35.21"N	79°44'32.10"E
04	R04	20°23'31.04"N	79°44'22.00"E