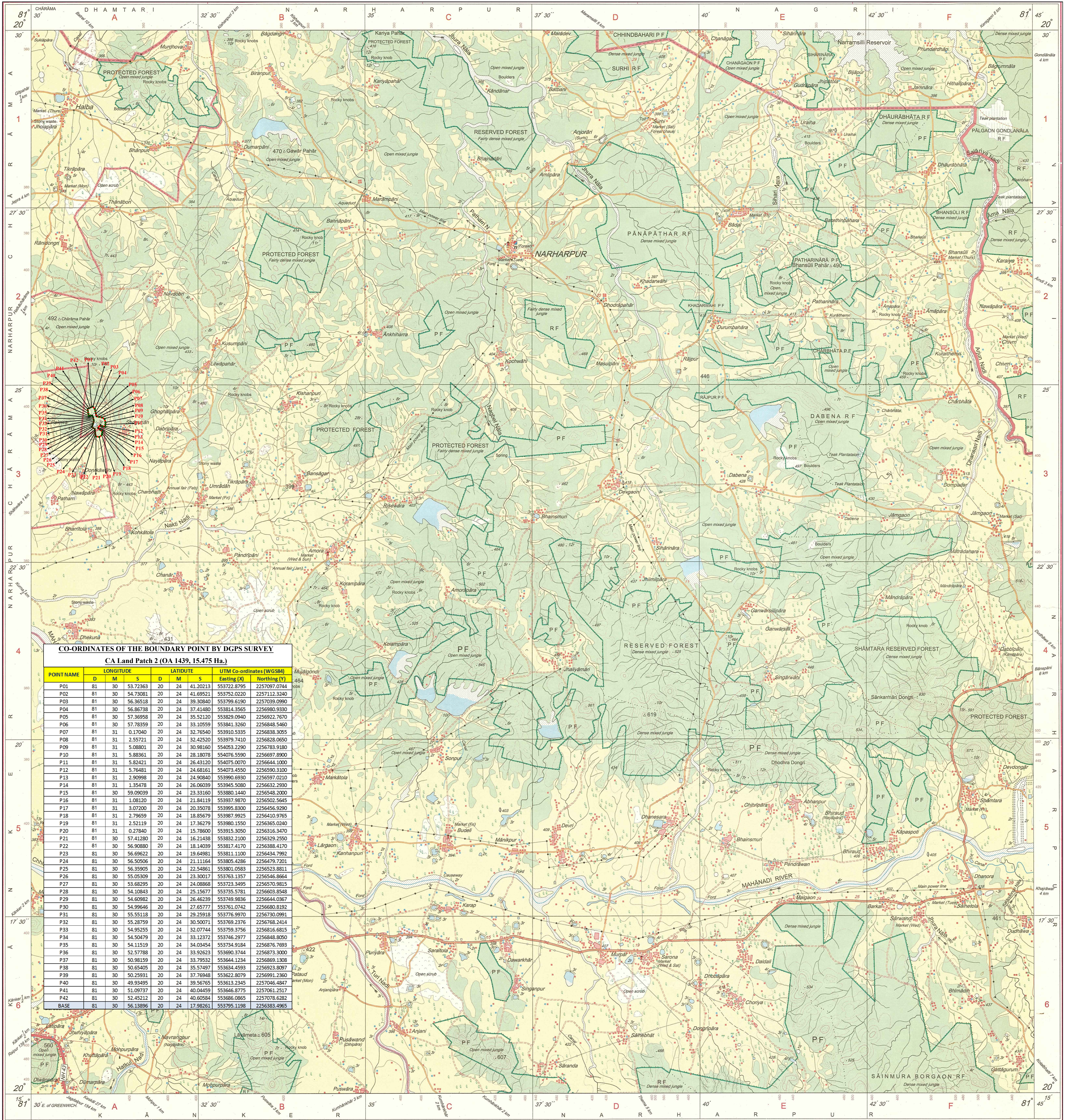
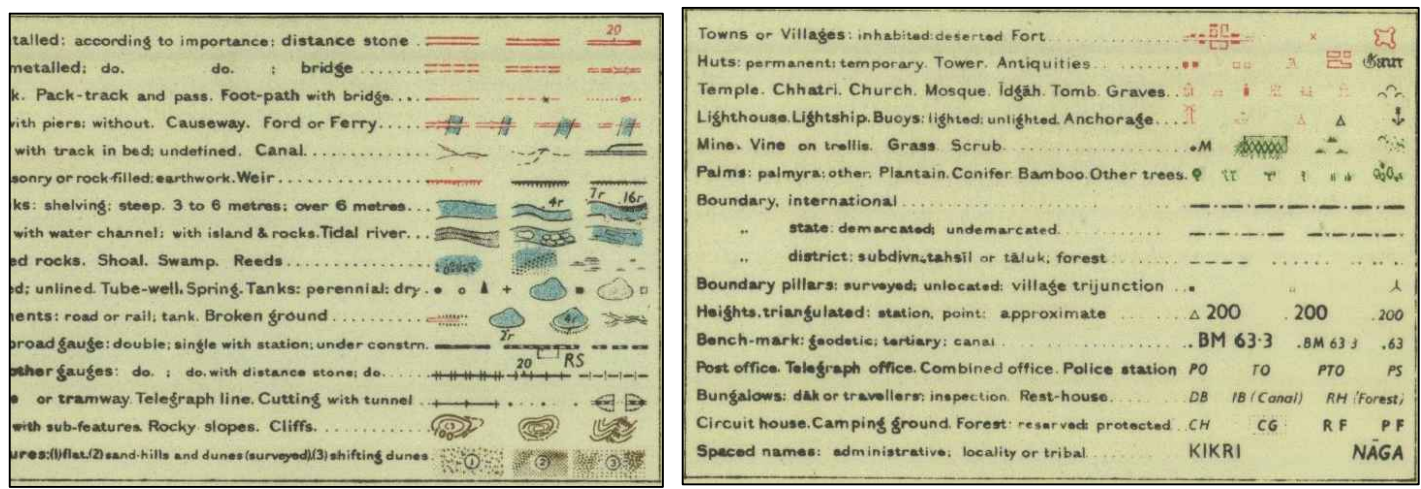
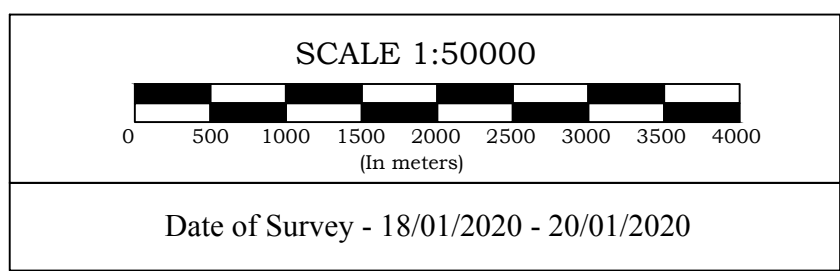


SUPERIMPOSED DGPS SURVEYED CA LAND AREA PATCH NO.-2 (OA-1439) ON TOPOSHEET MAP (Map No.- 64H/11)  
 FOR FOREST LAND DIVERSION PROPOSAL OF GOVERNMENT MEDICAL COLLEGE BUILDING OF HEALTH DEPARTMENT  
 LOCATION AT VILLAGE- PALEWA, TEHSIL-CHARAMA, DIST. -KANKER (C.G.)

ANNEXURE - 2(B)



POINT NAME	LONGITUDE			LATITUDE			UTM Co-ordinates (WGS84)	
	D	M	S	D	M	S	Eastings (X)	Northing (Y)
P01	81	30	53.7263	20	24	41.20213	553722.8795	2257097.0744
P02	81	30	54.73081	20	24	41.69521	553752.0220	2257112.3240
P03	81	30	56.36518	20	24	39.30840	553799.6190	2257039.0990
P04	81	30	56.86738	20	24	37.41480	553814.3565	2256980.9330
P05	81	30	57.36958	20	24	35.52120	553829.0940	2256922.7670
P06	81	30	57.78359	20	24	33.10559	553841.3260	2256848.5460
P07	81	31	0.17040	20	24	32.76540	553910.5335	2256838.3055
P08	81	31	2.55721	20	24	32.42520	553979.7410	2256828.0650
P09	81	31	5.08801	20	24	30.98160	554053.2290	2256783.9180
P10	81	31	5.88361	20	24	28.18078	554076.5590	2256697.8900
P11	81	31	5.82421	20	24	26.43120	554075.0070	2256644.1000
P12	81	31	5.76481	20	24	24.68161	554073.4550	2256590.3180
P13	81	31	2.50998	20	24	24.30840	553980.6930	2256597.0210
P14	81	31	1.35478	20	24	26.06039	553945.5080	2256632.2930
P15	81	30	59.09039	20	24	23.33160	553880.1440	2256548.2000
P16	81	31	1.08120	20	24	21.84119	553997.9870	2256502.5645
P17	81	31	3.07200	20	24	20.35078	553995.8300	2256456.9290
P18	81	31	2.79659	20	24	18.85679	553987.9925	2256410.9765
P19	81	31	2.52119	20	24	17.36279	553980.1550	2256365.0240
P20	81	31	0.27840	20	24	15.78600	553915.3050	2256316.3470
P21	81	30	57.41280	20	24	16.21438	553832.2100	2256329.2550
P22	81	30	56.90880	20	24	18.14039	553817.4170	2256388.4170
P23	81	30	56.69622	20	24	19.64981	553811.1100	2256434.7992
P24	81	30	56.50506	20	24	21.11164	553805.4286	2256479.7201
P25	81	30	56.35905	20	24	22.54861	553801.0583	2256523.8811
P26	81	30	55.05309	20	24	23.30017	553763.1357	2256546.8664
P27	81	30	53.68295	20	24	24.08868	553723.3495	2256570.9815
P28	81	30	54.10843	20	24	25.15677	553758.5781	2256603.8948
P29	81	30	54.60982	20	24	26.46239	553749.9836	2256604.0367
P30	81	30	54.99646	20	24	27.65777	553761.0742	2256680.8192
P31	81	30	55.55118	20	24	29.25918	553776.9970	2256730.0991
P32	81	30	55.28759	20	24	30.50071	553769.2376	2256768.2414
P33	81	30	54.95255	20	24	32.07744	553759.3756	2256816.6815
P34	81	30	54.50479	20	24	33.12372	553746.2977	2256848.8050
P35	81	30	54.11519	20	24	34.03454	553734.9184	2256876.7693
P36	81	30	52.57788	20	24	33.92623	553690.3744	2256873.3000
P37	81	30	50.98159	20	24	33.79532	553644.1234	2256869.1308
P38	81	30	50.65405	20	24	35.57497	553634.4593	2256923.8097
P39	81	30	50.25931	20	24	37.76948	553622.8079	2256991.2360
P40	81	30	49.93495	20	24	39.56765	553613.2345	2257046.4847
P41	81	30	51.09737	20	24	40.04459	553646.8775	2257061.2517
P42	81	30	52.45212	20	24	40.60584	553686.0865	2257078.6282
BASE	81	30	56.13896	20	24	17.98261	553795.1198	2256383.4965



	DGPS SURVEYED AREA
	DGPS SURVEYED BOUNDARY POINT
<b>P01</b>	BOUNDARY POINT NUMBER

SUPERIMPOSED DGPS SURVEYED CA LAND AREA PATCH NO.-2 (OA-1439) ON TOPOSHEET MAP (Map No.- 64H/11) FOR FOREST LAND DIVERSION PROPOSAL OF GOVERNMENT MEDICAL COLLEGE BUILDING OF HEALTH DEPARTMENT	
<b>DETAIL OF DGPS SURVEYED AREA</b> VILLAGE - PALEWA TEHSIL - CHARAMA, DISTRICT - KANKER (C.G.) CA LAND SURVEYED AREA - 15.475 Ha.	
SURVEYED BY  VINOD MARKAM [GEOLOGIST]	CHECKED BY  ALOK VERMA [SR. MANAGER]
SIDDHARTH GEO CONSULTANTS 621/3, BEHIND LIFEWORTH HOSPITAL RAMKUND SAMTA COLONY RAIPUR (C.G.)	
CHEIF MEDICAL AND HEALTH OFFICER Uttar Bastar, District - Kanker Chhattisgarh	
EMPANELMENT OUR FIRM SIDDHARTH GEO CONSULTANTS AUTHORIZED FOR DGPS SURVEY IN CHHATTISGARH UNDER VIDE THEIR LETTER NUMBER F7 - 14/2013/12, DATED 10/11/2014	