



निर्गत के लिए नहीं NOT FOR EXPORT

OPEN SERIES  
MAP

No. F42D3

Scale 1:50,000

F42C14 (41A/14)	F42D2 (41E/2)	F42D6 (41E/6)
F42C15 (41A/15)	F42D3 (41E/3) Kachchh GUJARAT	F42D7 (41E/7)
F42C16 (41A/16)	F42D4 (41E/4)	F42D8 (41E/8)

भारतीय सर्वेक्षण विभाग

SURVEY OF INDIA

1st Edition 2010.

Price: Rs. 103/-

CONVENTIONAL SYMBOLS

Express highway with toll; with bridge with distance stone	
Roads, metalled according to importance	
Roads, double cartway according to importance	
Unmetalled road, cart-track, pack-track with pass, foot-path	
Streams with track in bed, undefined, canal	
Dams, masonry or rock-filled, earthwork, weir	
River, dry with water channel; with island & rocks, tidal river	
Submerged rocks, Shoal, Swamp, Roads	
Wells, lined, unlined, tube-well, Spring, Tanks, perennial, dry	
Embankments, road or rail; tank, Broken ground	
Railways, broad gauge; double, single with station, under constr.	
Railways, other gauges; double, single with distance stone, do.	
Mineral line or tramway, Rtn. Cutting with tunnel	
Contours with sub-features, Rocky slopes, Cliffs	
Sand features (Y. flat, (Z. sand-hill) permanent), (Th. sand-hill)	
Towns, Villages, inhabited, deserted, Fort	
Huts, permanent, temporary, Tower, Aqueduct	
Temples, Church, Mosque, Synagogue, Tomb, Grotto	
Lighthouse, Lightship, Buoy, lighted, unlighted, Anchorage	
Mine, Vm on trails, Grass, Scrub	
Palms, palm-forest, other, Plantain, Cactus, Bamboo, Other trees	
Areas cultivated, wooded, Surveyed tree	
Boundary, international	
State demarcated, undemarcated	
District, subdivision, taluk or block, forest	
Boundary pillars, surveyed, uncoloured	
Height, triangulated, station, point, approximate	
BM 63-3, BM 63-3	
Post office, Overhead tank	
Rail house or inspection bungalow, Circuit house, Police station, H	
Camping ground, Forest: reserved, protected	
Squad names: administrative, locality or tribal	
Hospital, Dispensary, Veterinary Hospital / Dispensary	
Aerodrome, Heliport, Tourist site	
Power line: with pylons surveyed; with poles unsurveyed	

NOTES :-

Heights and Contours have not been shown.  
A relative height e.g., 8, represents the approximate height, in metres between the top and bottom of a steep slope.  
Tanks, shown dry, in this area usually contain water from July to October.  
Cultivation is periodic and depends on rain fall.

COMPILATION INDEX

A. Surveyed during 1986-87. Updated for major details during 2008-07.



Projection - UTM Datum - WGS 84

Magnetic Variation from True North about 0° in 2005.  
(Increasing by about 1° annually)

1:50,000

0 500 1 2 3 Kilometres

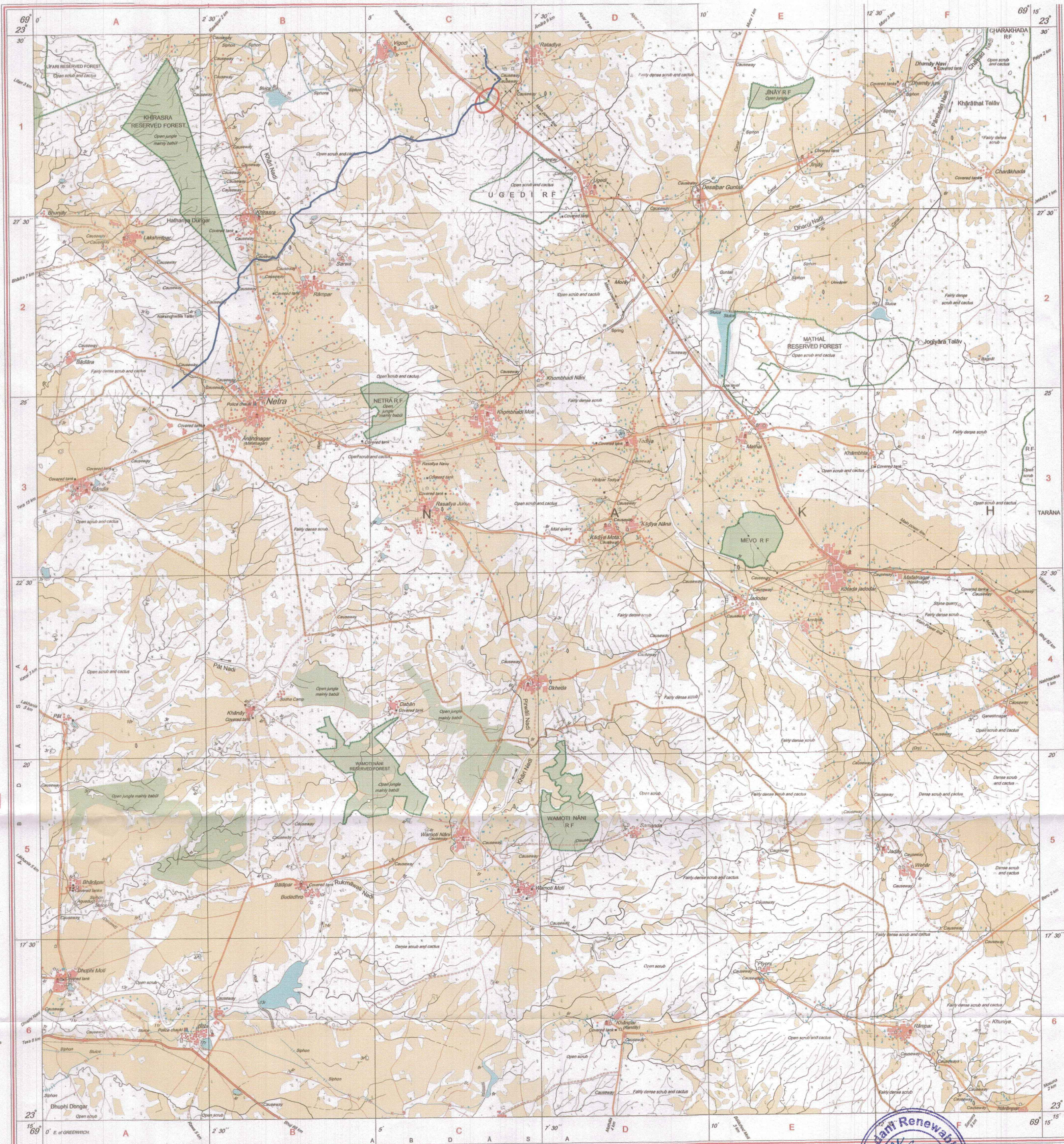
For further details about this map, please contact

Director  
Gujarat, Damán & Diu Geo-Spatial Data Centre  
Survey of India, Sector 10 (A)  
Gandhinagar.

WEBSITE - [www.surveyofindia.gov.in](http://www.surveyofindia.gov.in)

Reproduction in whole or part by any means is prohibited  
without the written permission of Survey of India, the  
National Mapping Agency.

GOVERNMENT OF INDIA COPYRIGHT, 2010.



LEGEND

	Proposed Route of Transmission Line
	Forest Area

सर्वेक्षण विभाग के द्वारा तैयार किया गया है।  
Published under the direction of Dr. Swarna Subha Rao, Surveyor General of India,  
Survey of India, Hithibarkata Estate, Post Box No. 37, Dehra Dun - 248001 (Uttarakhand),  
Department of Science & Technology, Government of India.

