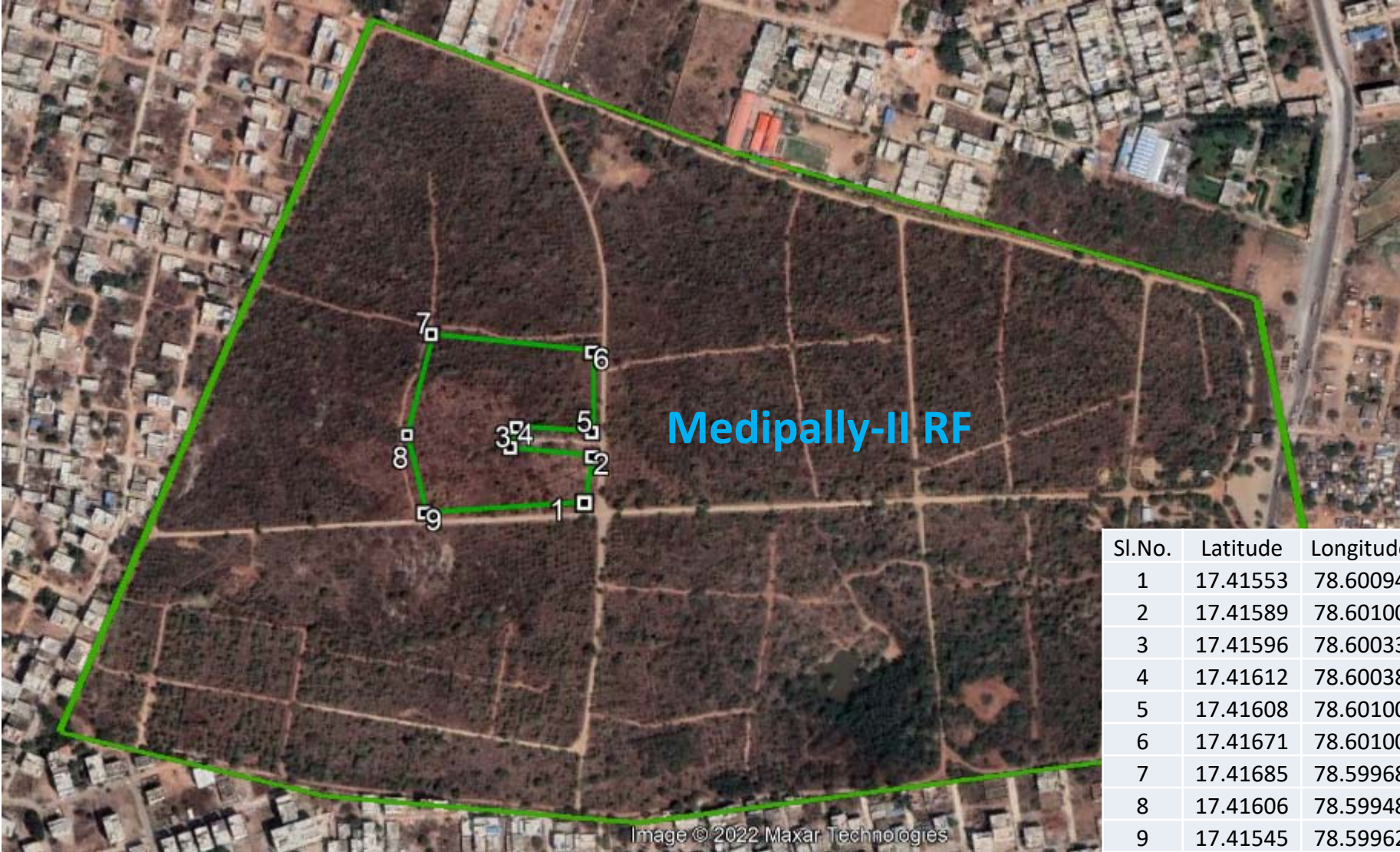


Surveyed Sketch Map Showing the Addl. Compensatory Afforestation of 2222 Plants for 2.00 Ha. in Medipally-II RF. Diversion of 0.624 Ha. of Forest land in Narepally Cluster of Uppal Range for Construction of Six Lane Elevated Corridor from Km.7.950 Km.14.200 of NH 163 to De-Congest the Urban limits of Hyderabad - Bhoopalapatnam Section on EPC Mode in favour of Chief Engineer, Regional Officer, Hyderabad Morth, GOI, Telangana State Forest Department.



Sl.No.	Latitude	Longitude
1	17.41553	78.60094
2	17.41589	78.60100
3	17.41596	78.60033
4	17.41612	78.60038
5	17.41608	78.60100
6	17.41671	78.60100
7	17.41685	78.59968
8	17.41606	78.59948
9	17.41545	78.59962