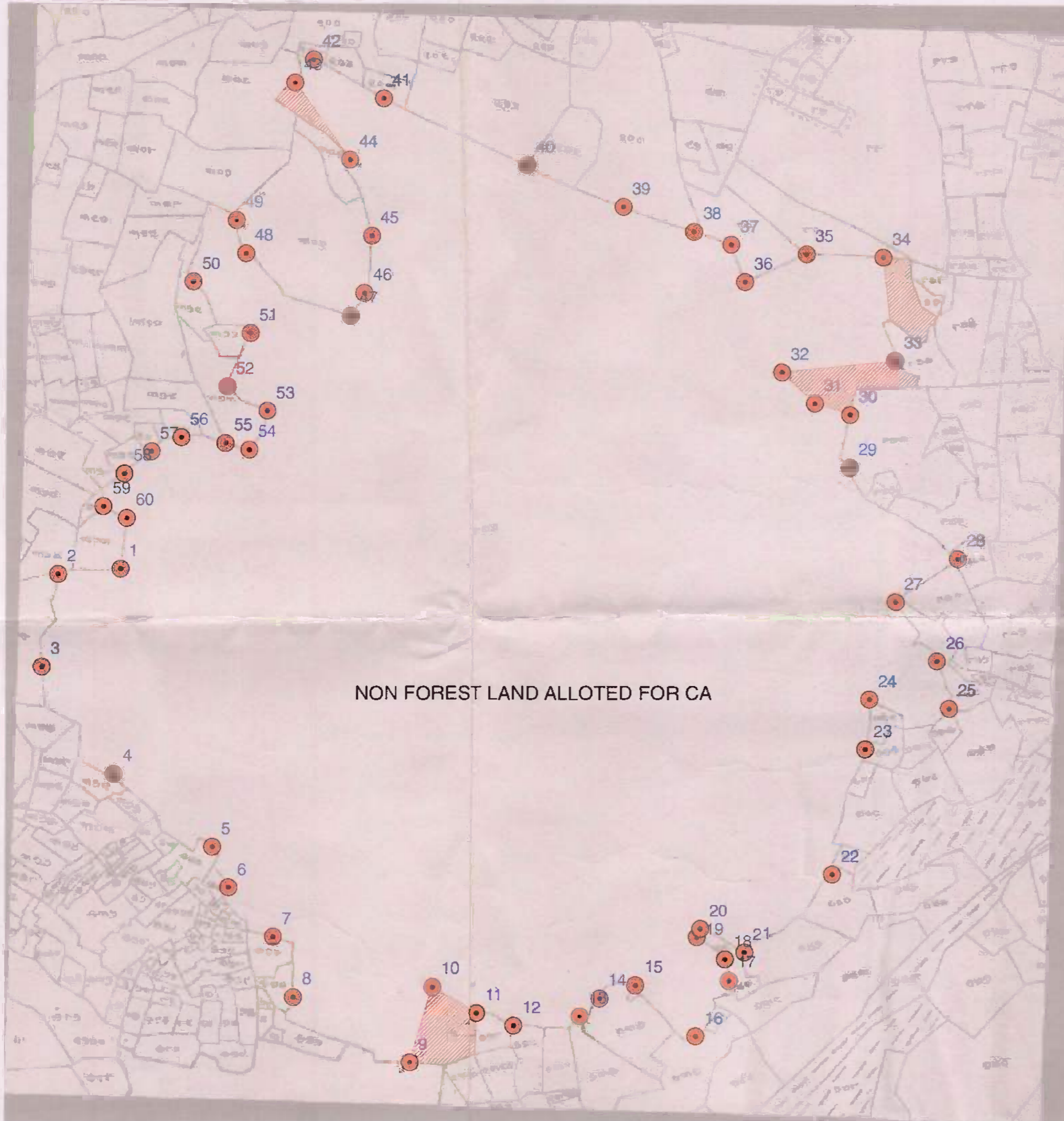




PLAN SHOWING THE NON GOVT. LAND IDENTIFIED FOR COMPENSATORY AFFORESTATION ALOTED BY THE COLLECTOR, KEONJHAR VIDE LETTER NO. 2694(2), DTD. 12.11.1999 AGAINST THE MINING PROJECT OF M/s D.C. JAIN FOR DALPAHAR IRON & MANGANESE LEASE.

SCALE - 16" = 1 MILE



GPS READING OF PILLARS ( PLOT NO - 876 )

Sl No.	Pillar No.	Latitude	Longitude	Sl No.	Pillar No.	Latitude	Longitude
1	1	21° 25' 54.9"	85° 23' 56.3"	31	31	21° 26' 00.4"	85° 24' 20.6"
2	2	21° 25' 54.8"	85° 23' 54.0"	32	32	21° 26' 01.4"	85° 24' 19.3"
3	3	21° 25' 51.4"	85° 23' 54.2"	33	33	21° 26' 01.8"	85° 24' 23.3"
4	4	21° 25' 48.2"	85° 23' 56.8"	34	34	21° 26' 05.0"	85° 24' 22.7"
5	5	21° 25' 45.7"	85° 24' 00.5"	35	35	21° 26' 05.3"	85° 24' 19.7"
6	6	21° 25' 44.2"	85° 24' 01.6"	36	36	21° 26' 04.3"	85° 24' 18.0"
7	7	21° 25' 42.7"	85° 24' 02.2"	37	37	21° 26' 05.4"	85° 24' 17.4"
8	8	21° 25' 40.9"	85° 24' 02.6"	38	38	21° 26' 05.7"	85° 24' 16.1"
9	9	21° 25' 39.6"	85° 24' 06.7"	39	39	21° 26' 06.5"	85° 24' 13.7"
10	10	21° 25' 41.3"	85° 24' 07.4"	40	40	21° 26' 08.3"	85° 24' 10.1"
11	11	21° 25' 41.3"	85° 24' 09.0"	41	41	21° 26' 10.5"	85° 24' 05.3"
12	12	21° 25' 40.9"	85° 24' 10.2"	42	42	21° 26' 11.3"	85° 24' 02.8"
13	13	21° 25' 40.1"	85° 24' 13.0"	43	43	21° 26' 10.6"	85° 24' 02.6"
14	14	21° 25' 40.3"	85° 24' 13.7"	44	44	21° 26' 08.1"	85° 24' 04.2"
15	15	21° 25' 41.4"	85° 24' 14.5"	45	45	21° 26' 05.7"	85° 24' 05.1"
16	16	21° 25' 40.3"	85° 24' 16.7"	46	46	21° 26' 03.7"	85° 24' 04.9"
17	17	21° 25' 41.6"	85° 24' 18.5"	47	47	21° 26' 03.1"	85° 24' 02.9"
18	18	21° 25' 42.4"	85° 24' 18.2"	48	48	21° 26' 05.0"	85° 24' 00.6"
19	19	21° 25' 43.2"	85° 24' 17.0"	49	49	21° 26' 06.0"	85° 24' 00.1"
20	20	21° 25' 43.4"	85° 24' 17.1"	50	50	21° 26' 04.1"	85° 23' 58.8"
21	21	21° 25' 42.7"	85° 24' 19.5"	51	51	21° 26' 01.9"	85° 24' 00.5"
22	22	21° 25' 44.6"	85° 24' 22.0"	52	52	21° 26' 00.8"	85° 24' 00.1"
23	23	21° 25' 48.9"	85° 24' 23.3"	53	53	21° 26' 00.7"	85° 24' 02.7"
24	24	21° 25' 51.9"	85° 24' 22.8"	54	54	21° 25' 59.3"	85° 24' 02.6"
25	25	21° 25' 51.6"	85° 24' 25.8"	55	55	21° 25' 59.1"	85° 24' 01.2"
26	26	21° 25' 52.5"	85° 24' 25.8"	56	56	21° 25' 58.8"	85° 23' 58.6"
27	27	21° 25' 53.8"	85° 24' 24.1"	57	57	21° 25' 58.5"	85° 23' 57.8"
28	28	21° 25' 55.7"	85° 24' 25.7"	58	58	21° 25' 57.4"	85° 23' 53.3"
29	29	21° 25' 58.4"	85° 24' 21.7"	59	59	21° 25' 57.0"	85° 23' 55.9"
30	30	21° 26' 00.1"	85° 24' 21.7"	60	60	21° 25' 56.3"	85° 23' 56.4"

GPS READING OF PILLARS ( PLOT NO - 1250/1 )

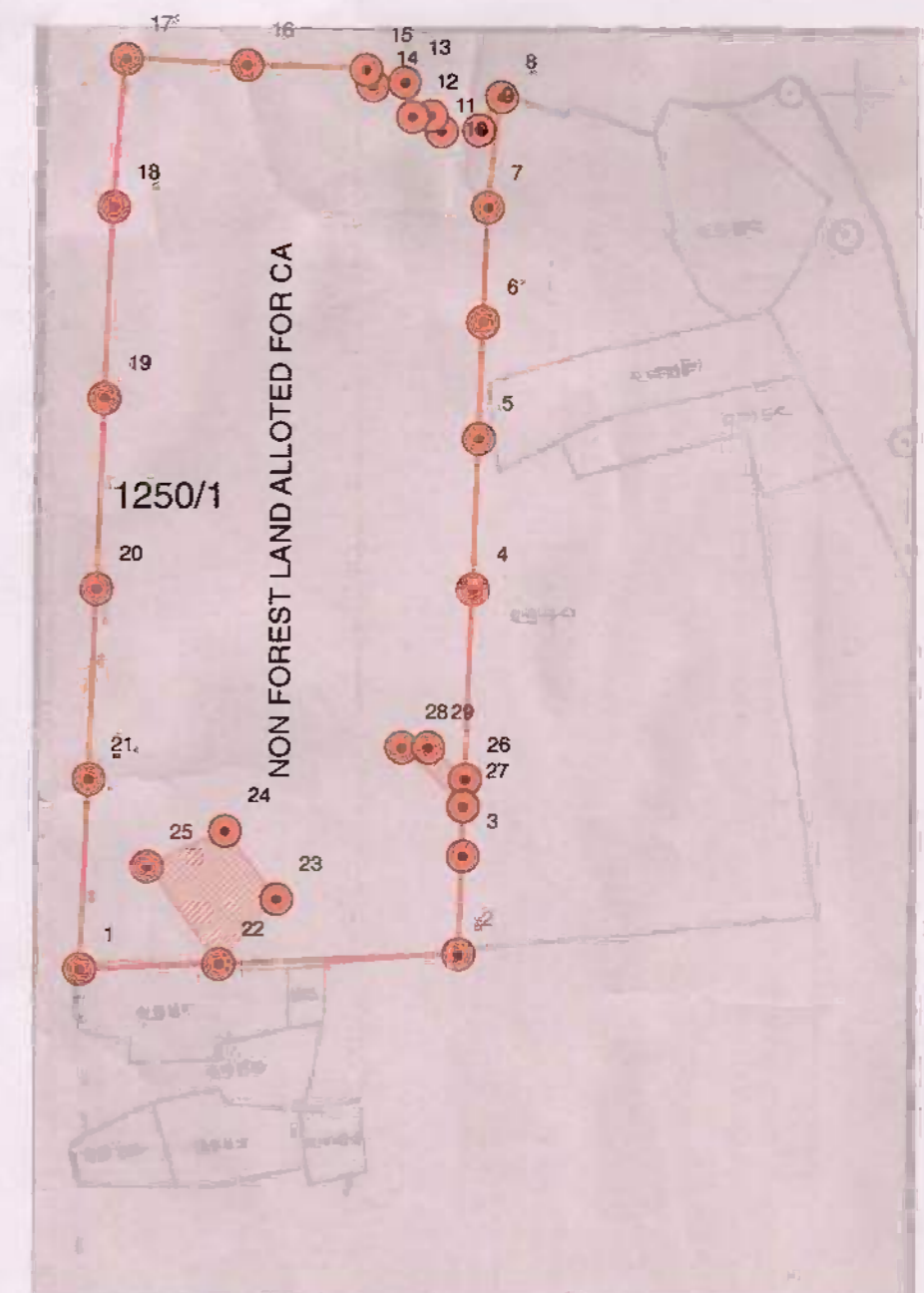
Sl No.	Pillar No.	Latitude	Longitude
1	1	21° 25' 07.6"	85° 24' 40.6"
2	2	21° 25' 07.9"	85° 24' 47.5"
3	3	21° 25' 09.6"	85° 24' 47.6"
4	4	21° 25' 14.1"	85° 24' 47.7"
5	5	21° 25' 16.7"	85° 24' 47.8"
6	6	21° 25' 18.7"	85° 24' 47.8"
7	7	21° 25' 20.6"	85° 24' 47.9"
8	8	21° 25' 21.9"	85° 24' 47.9"
9	9	21° 25' 21.7"	85° 24' 47.3"
10	10	21° 25' 21.6"	85° 24' 46.8"
11	11	21° 25' 21.9"	85° 24' 46.7"
12	12	21° 25' 21.9"	85° 24' 46.4"
13	13	21° 25' 22.4"	85° 24' 46.3"
14	14	21° 25' 22.5"	85° 24' 45.7"
15	15	21° 25' 22.7"	85° 24' 45.7"
16	16	21° 25' 22.8"	85° 24' 43.5"
17	17	21° 25' 23.0"	85° 24' 41.1"
18	18	21° 25' 20.6"	85° 24' 41.1"
19	19	21° 25' 17.3"	85° 24' 40.9"
20	20	21° 25' 14.1"	85° 24' 40.8"
21	21	21° 25' 10.8"	85° 24' 40.7"
22	22	21° 25' 07.7"	85° 24' 43.2"
23	23	21° 25' 08.8"	85° 24' 44.2"
24	24	21° 25' 10.0"	85° 24' 43.2"
25	25	21° 25' 09.3"	85° 24' 41.8"
26	26	21° 25' 10.9"	85° 24' 47.6"
27	27	21° 25' 10.4"	85° 24' 47.6"
28	28	21° 25' 11.4"	85° 24' 46.5"
29	29	21° 25' 11.4"	85° 24' 46.9"

Legend

● ALLOTTED NF BOUNDARY PILLAR

ENCROACHMENT AREA

TAHASL	VILLAGE	KHATA No.	PLOT No.	NAME OF TENANT	KISSAM	LAND SCHEDULED AREA IN HECTARES				BOUNDARY DESCRIPTION							
						FULL AREA	ALLOTTED AREA	ENCROACHMENT BY LOCAL PEOPLE	BALANCE AREA FOR C.A.	NORTH		SOUTH		EAST		WEST	
										PL. No.	K. No.	PL. No.	K. No.	PL. No.	K. No.	PL. No.	K. No.
TELKOI	DANDAR GONI	164	876	ABAD AJOGYA ANABADI	PARBAT-II	60.69	60.69	0.93	59.76	100	163	1313	163	849	152	363	163
		164	1250/1	Do	Do	15.93	10.13	0.25	9.88	948	164	1248	61	1252	164	949	162
TOTAL						76.62	70.82	1.18	69.64								



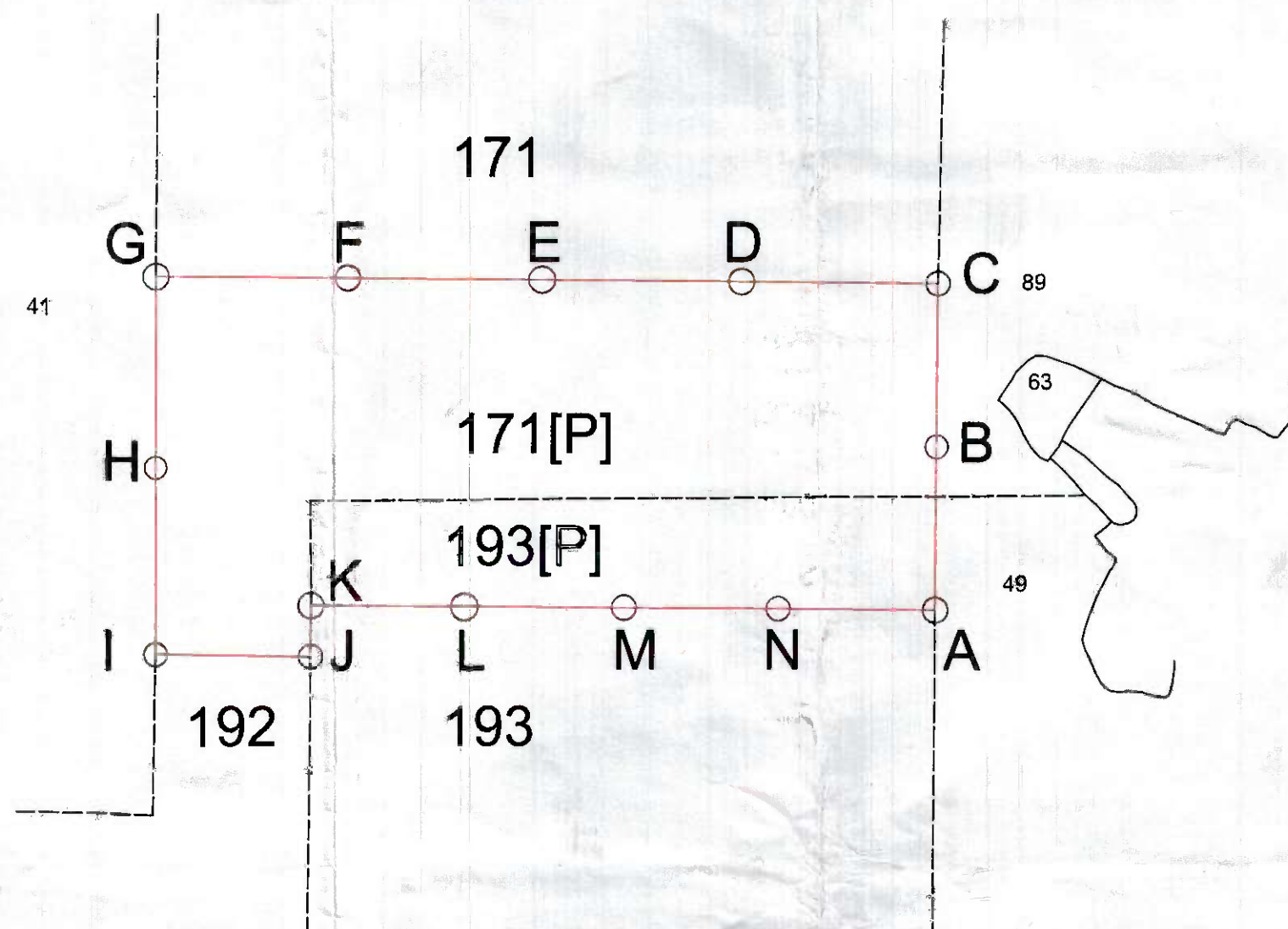
- CERTIFIED THAT THE ABOVE NON-FOREST GOVT. LAND IS IN COMPACT PATCHES OF MORE THAN 4 HECT. AND HAVING ADEQUATE SOIL DEPTH SUITABLE FOR PLANTATION FORM MANAGEMENT POINT OF VIEW.
- CERTIFIED THAT THE ABOVE NON-FOREST GOVT. LAND IS FREE FROM ENCROACHMENT AND ENCUMBRANCES.
- CERTIFIED THAT THE ABOVE LAND IS NOT COVERED UNDER 4(1) NOTIFICATION
- CERTIFIED THAT THE ABOVE LAND IS NOT COVERED UNDER D.L.C. REPORT KEONJHAR
- CERTIFIED THAT THE ABOVE LAND IS NOT ALLOTTED PREVIOUSLY.

REVENUE INSPECTOR, TELKOI, Chhemunda  
 TAHSILDAR, TELKOI, Chhemunda  
 FOREST OFFICER, TELKOI  
 RANGE OFFICER, TELKOI forest range

N

MAP SHOWING THE NON-FOREST GOVT LAND ALLOTTED BY THE COLLECTOR, KEONJHAR  
 VIDE LETTER NO 2255/REV. DATED 23-11-09 FOR COMPENSATORY AFFORESTATION  
 AGAINST DALPHAR IRON AND MANGANESE MINES OF D.C.JAIN OVER 9.800 HECTARES IN  
 VILLAGE CHAMPAJHAR UNDER BANSAPAL TAHASIL KEONJHAR DISTRICT.

SCALE-1:4000



SL.	PILLAR NO	LINE	DISTANCE	LATITUDE	LONGITUDE
01	A	A-B	96.26mt.	21°-34'-48.12"	85°-17'-56.76"
02	B	B-C	95.74mt.	21°-34'-51.23"	85°-17'-56.39"
03	C	C-D	123.27mt.	21°-34'-54.53"	85°-17'-56.10"
04	D	D-E	125.02mt.	21°-34'-54.14"	85°-17'-51.79"
05	E	E-F	121.64mt.	21°-34'-53.75"	85°-17'-47.47"
06	F	F-G	120.70mt.	21°-34'-53.36"	85°-17'-43.25"
07	G	G-H	111.22mt.	21°-34'-52.98"	85°-17'-39.07"
08	H	H-I	120.79mt.	21°-34'-49.19"	85°-17'-39.47"
09	I	I-J	97.83mt.	21°-34'-45.28"	85°-17'-39.87"
10	J	J-K	40.00mt.	21°-34'-45.59"	85°-17'-43.26"
11	K	K-L	97.43mt.	21°-34'-46.88"	85°-17'-43.13"
12	L	L-M	98.88mt.	21°-34'-47.19"	85°-17'-46.50"
13	M	M-N	97.81mt.	21-34'-47.50"	85-17'-49.96"
14	N	N-A	98.50mt.	21-34'-47.81"	85-17'-53.31"

**LAND SCHEDULE**

TAHASIL	VILLAGE	KHATA NO	PLOT NO	KISAM	AREA IN HECTS.	BOUNDARY DESCRIPTION			
						NORTH	SOUTH	EAST	WEST
BANSAPAL	CHAMPAJHAR	24	42/171[P]	PARBAT-II	7.3100	171	193[P]	89	41
		24	42/193[P]	PARBAT-II	2.4900	171[P]	193	49	171[P]
TOTAL					9.8000				

**CERTIFICATE**

1. CERTIFIED THAT THE ABOVE NON-FOREST GOVERNMENT LAND IS IN COMPACT PATCHES OF MORE THAN 4.00 HA. AND HAVING ADEQUATE SOIL DEPTH SUITABLE FOR PLANTATION FROM MANAGEMENT POINT OF VIEW.
2. CERTIFIED THAT THE ABOVE NON-FOREST GOVERNMENT LAND IS FREE FROM ENCROACHMENT AND ENCUMBRANCES.
3. CERTIFIED THAT THE ABOVE LAND IS NOT COVERED UNDER 4[1] NOTIFICATION.
4. CERTIFIED THAT THE ABOVE LAND IS NOT COVERED UNDER DLC REPORT KEONJHAR.
5. CERTIFIED THAT THE ABOVE LAND IS NOT ALLOTTED PREVIOUSLY.

REVENUE INSPECTOR  
NAYAKOT

FOREST SECTION OFFICER

RANGE OFFICER  
B.J.P. RANGE

TAHASILDAR  
TAHASILDAR  
BANSAPAL

D.F.O  
KEONJHAR DIVISION