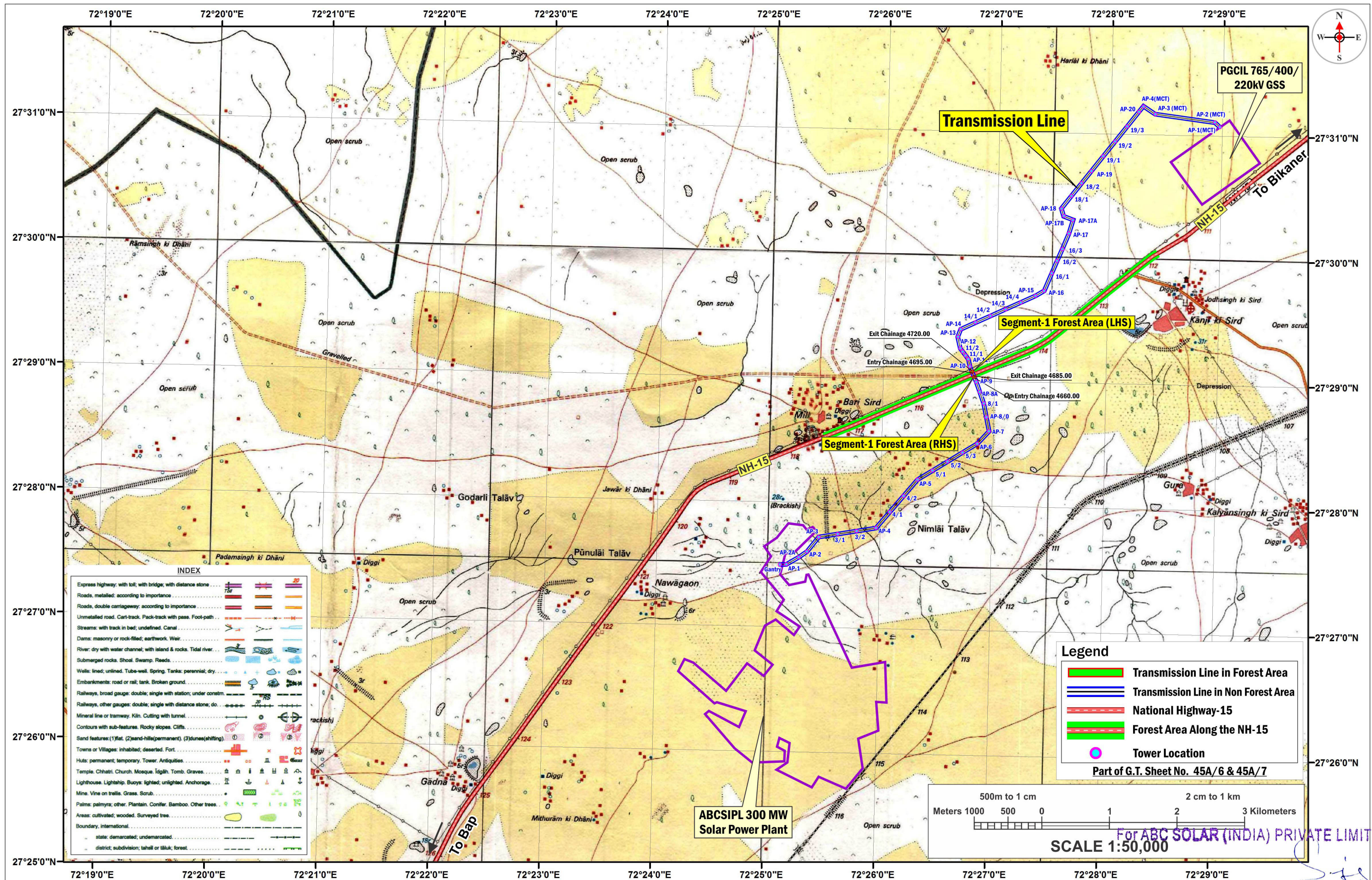


# MAP SHOWING GEO REFERENCED SOI TOPOSHEET MAP OF TOTAL LINE ALIGNMENT WITH REQUIRED FOREST LAND AND TOWER LOCATION

Project Name :- Construction of 220 kV S/C Transmission line on D/C towers laying between proposed ABCSIPL 300 MW Solar Power Plant to PGCIL 765/400/220kV GSS at Near Village - Badi Sird, Tehsil - BAP, District - Jodhpur in the State of Rajasthan

Proposal No. : FP/RJ/TRANS/153699/2022 (Applied Area - 0.1750 Hectare)





MAP SHOWING GEO REFERENCED SOI TOPOSHEET MAP OF TOTAL LINE ALIGNMENT WITH REQUIRED FOREST LAND AND TOWER LOCATION  
Project Name :- Construction of 220 kV S/C Transmission line on D/C towers laying between proposed ABCSIPL 300 MW Solar Power Plant to PGCIL 765/400/220kV GSS at Near Village - Badi Sird, Tehsil - BAP, District - Jodhpur in the State of Rajasthan  
Proposal No. : FP/RJ/TRANS/153699/2022 (Applied Area - 0.1750 Hectare)

निर्गत के लिए नहीं NOT FOR EXPORT

OPEN SERIES MAP

No. G43A7

Scale 1:50,000

Jaisalmer RAJASTHAN G43A2 (45A/2)	Bikaner RAJASTHAN G43A6 (45A/6)	G43A10 (45A/10)
G43A3 (45A/3)	G43A7 (45A/7)	G43A11 (45A/11)
G43A4 (45A/4)	G43A8 (45A/8)	G43A12 (45A/12)

1 Jaisalmer, RAJASTHAN.

भारतीय सर्वेक्षण विभाग SURVEY OF INDIA

1st Edition 2009. Price : Rs. 50 / -

CONVENTIONAL SYMBOLS

Express Highway: with toll; with bridge; with distance stone

Roads, metalled: according to importance

Roads, double carriageway: according to importance

Unmetalled Road, Cart-track, Pack-track and pass, Foot-path

Streams: with track in bed; undefined; Canal

Dams: masonry or rock-filled; earthenwork; Weir

River: dry with water channel; with island & rocks; Tidal river

Submerged rocks, Shoal, Swamp, Reeds

Wells: lined; unlined; Tube-well; Spring; Tanks: perennial; dry

Embankments: road or rail; tank; Broken ground

Railways, broad gauge: double; single with distance stone; do.

Railways, other gauges: double; single with distance stone; do.

Mineral: line or tramway; Kiln; Cutting with tunnel

Contours with sub-features: Rocky slopes, Cliffs

Sand features: (flat; (sand-hills) (permanent); (dunes) (shifting)

Towns or Villages: inhabited; deserted; Fort

Huts: permanent; temporary; Tower; Antiquities

Temple, Chhatra, Church, Mosque, Idgah, Tomb, Graves

Lighthouse, Lightship, Buoys: lighted; unlighted; Anchorage

Mine: Vine on trestle; Grass; Scrub

Palms: palmyra; other; Plantain, Conifer, Bamboo, Other trees

Areas: cultivated; wooded; Surveyed tree

Boundary, international

state: demarcated; undemarcated

district: subdivision; taluk or taluk; forest

Boundary Pillars: surveyed; unlocated; village trijunction

Heights, triangulated; station; point; approximate

Bench-mark: geodetic; tertiary; canal

Post office, Telegraph office, Overhead tank

Rest house or inspection bungalow, Circuit house, Police station

Camping ground, Forest: reserved; protected

Spaced names: administrative; locality or tribal

Hospital, Dispensary, Veterinary: Hospital / Dispensary

Aerodrome, Helipad, Tourist site

Power line: with pylons surveyed; with poles unsurveyed

REFERENCE

NH 15 National Highway No. 15

NOTES :-

1. Rights and contours have not been shown.

2. A relative height, e.g., 30', represents the approximate height, in metres, between the top and bottom of a steep slope.

3. A relative height, e.g., 30', against a well, indicates its total depth in metres.

4. Tanks, shown dry, in this area usually contain water from July to September.

5. Most of unlined well symbols indicate covered tanks, called Kund, which usually contain surface collection of rainwater.

6. Digpi is a tank which is used for collection of water.

7. I-tracks, in this sheet are generally motorable (four-wheel drive).

8. Cultivation is periodic and dependent on rainfall.

COMPILED INDEX

A. Surveyed during 2000-01.

Projection - UTM Datum - WGS 84

Magnetic Variation from True North about  $\frac{1}{2}^{\circ}$  East in 2005.  
(Increasing by about  $\frac{1}{2}^{\circ}$  annually).

1:50,000

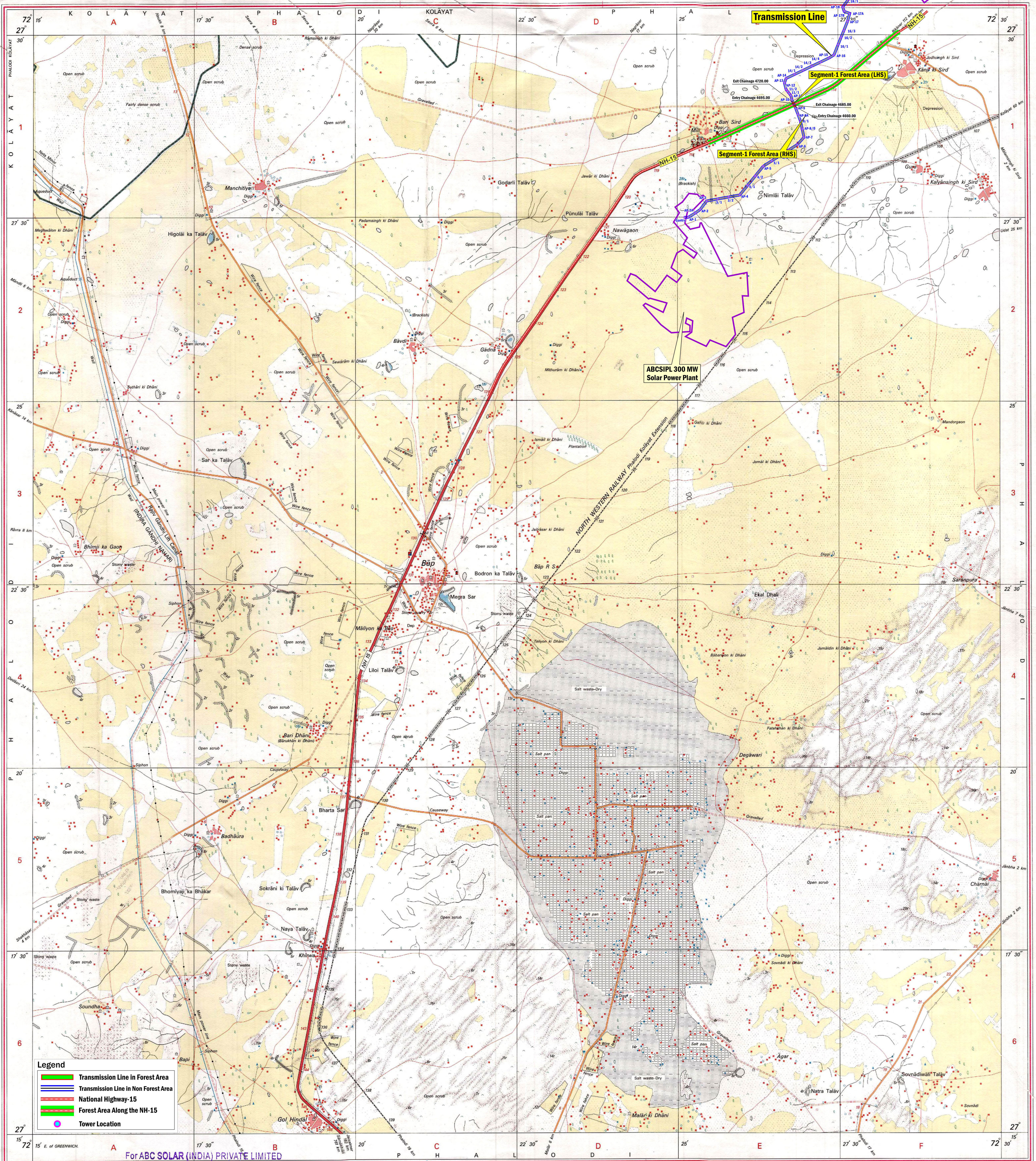
500 m to 1 cm

Metres 1000 500 0 1 2 3 Kilometres

For further details about this map, please contact  
Director  
Rajasthan Geo-Spatial Data Centre  
Survey of India  
Sector 10, VidyaDharnagar  
Jaipur.  
Fax : 0141 - 2236891

WEBSITE - www.surveyofindia.gov.in

Reproduction in whole or part by any means is prohibited without the written permission of Survey of India, the National Mapping Agency.



REG. No. 343/WGS D 09 (Rajasthan GDC-150,000-1515).

SANJAY PUROHIT  
Authorized Signatory

भारत के महासर्वेक्षक के निदेशन में प्रकाशित,  
Survey of India, Hattibarkala Estate, Post Box No. 37, Dehra Dun - 248001 (Uttarakhand),  
Department of Science & Technology, Government of India.

PRINTED AT THE WESTERN PRINTING GROUP OF SURVEY OF INDIA.