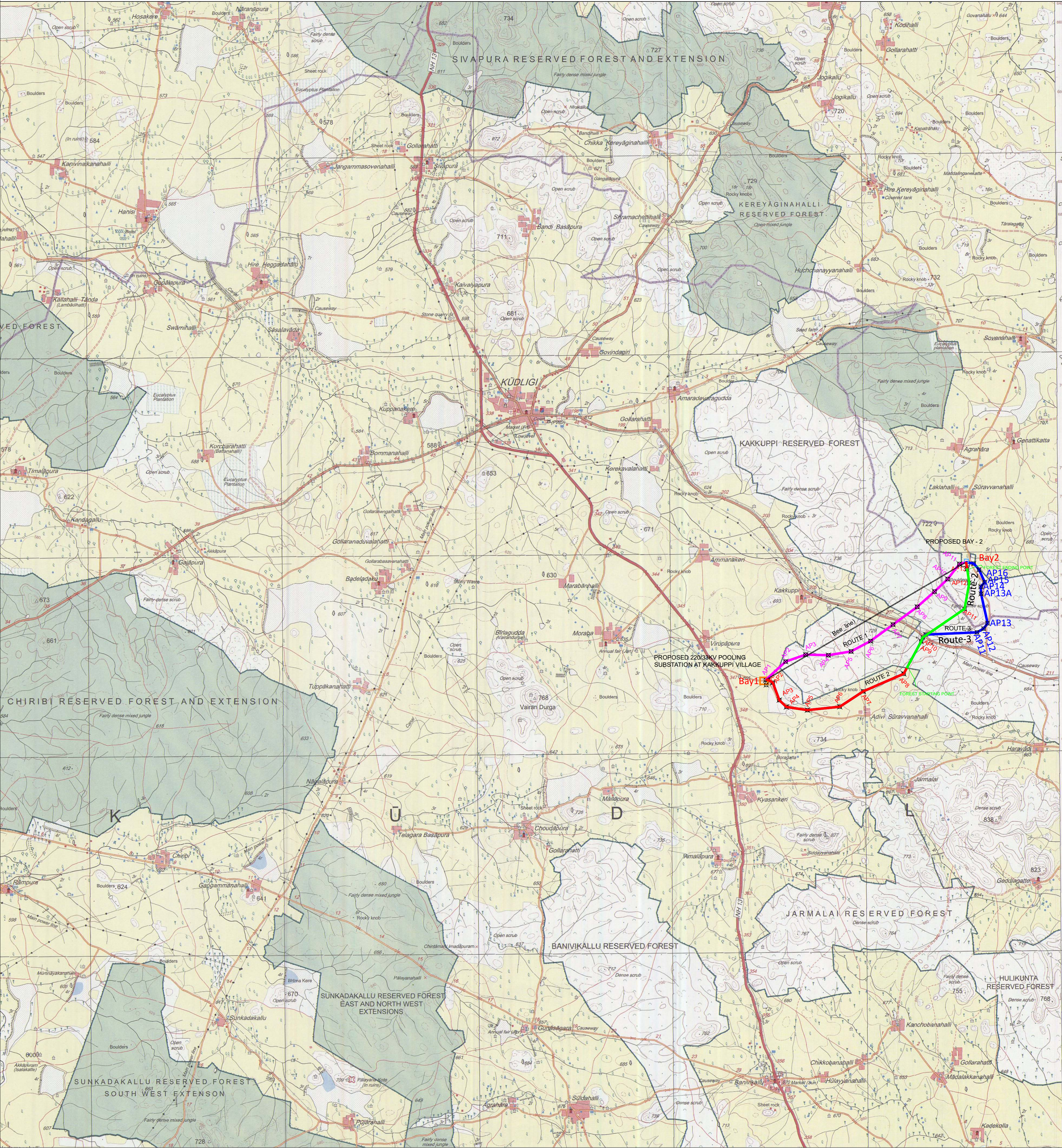


COMPARISON OF THREE ALTERNATIVE ROUTES ON SOI TOPOSHEET FOR CONSTRUCTION OF 33KV DC TRANSMISSION LINE FROM THE PROPOSED 220/33KV POOLING SUBSTATION AT KAKKUPPI VILLAGE TO THE PROPOSED WINDFARM IN KUDLIGI RANGE OF VIJAYANAGARA DISTRICT OF KARNATAKA STATE



LEGEND

RENEW GREEN ENERGY SOLUTIONS PRIVATE LIMITED

NAME OF WORK : CONSTRUCTION OF 33KV DC TRANSMISSION LINE FROM PROPOSED 220/33KV POOLING SUBSTATION AT KAKKUPPI VILLAGE TO THE PROPOSED WIND FARM IN KUDLIGI



SURVEY CONSULTANTS



M/S KARNATAKA SURVEYORS  
ENGINEERS AND CONTRACTORS  
# 492, 1st Floor, 12th Cross, 15th Main  
Palmnathi Nagar, BANGALORE - 560 070  
Mobile No. : 98455 45992, 78992 58380, Ph & Fax : 080-42002084  
E mail : karnatakasurveyors@gmail.com

- Bee-Line( Length =5.54 KMS)
- Proposed Route-1 (Length = 5.759 Kms) Forest(6.3 Ha)
- Proposed Route- 2 (Length = 7.005 Kms) Forest(4.338 Ha)
- Proposed Route-3 (Length = 7.849 Kms) Forest(5.17 Ha)
- PROPOSED 220/33KV PSS AT KUDLIGI
- PROPOSED BAY - 2

Surveywise, VillageWise & Project Component wise statement of Forest Area (4.338 Ha.) to be Diverted for Construction of 33KV DC Transmission Line from The Proposed 220/33KV Pooling Substation at Kakkuppi Village To The Proposed Windfarm									
Sl. No.	Division	Range Name	Village Name	Corridor Length (m)	Forest Area (Ha)	Project Component	Legal Status		
286	Bellary	Kakkuppi	Kakkuppi	15	21	Transmission Line	Reserve Forest		
368	Bellary	Kakkuppi	Kakkuppi	15	120	Transmission Line	Reserve Forest		
283	Bellary	Kakkuppi	Kakkuppi	15	149	Transmission Line	Reserve Forest		
282	Bellary	Kakkuppi	Kakkuppi	15	154.88	Transmission Line	Reserve Forest		
280	Bellary	Kakkuppi	Kakkuppi	15	183.29	Transmission Line	Reserve Forest		
301	Bellary	Kakkuppi	Kakkuppi	15	117.8	Transmission Line	Reserve Forest		
302	Bellary	Kakkuppi	Kakkuppi	15	20.07	Transmission Line	Reserve Forest		
304	Bellary	Kakkuppi	Kakkuppi	15	22.66	Transmission Line	Reserve Forest		
306	Bellary	Kakkuppi	Kakkuppi	15	357.73	Transmission Line	Reserve Forest		
314	Bellary	Kakkuppi	Kakkuppi	15	595.15	Transmission Line	Reserve Forest		
229	Bellary	Kakkuppi	Agrahara	15	1111	Transmission Line	Reserve Forest		
				TOTAL	2892	4.338			

JUSTIFICATION OF SELECTING THE PROPOSED ROUTE FOR THE CONSTRUCTION 33KV DC TRANSMISSION LINE FROM THE PROPOSED 220/33KV POOLING SUBSTATION AT KAKKUPPI VILLAGE TO THE PROPOSED WINDFARM IN BELLARY FOREST DIVISION- KARNATAKA

Sr No	Description	Alignment-1	Alignment-2	Alignment-3
1	Bee Line (In KM)	5.54	5.54	5.54
2	Length (In km)	5.759	7.005	7.849
3	Name of District through which line passes (Karnataka)	Bellary	Bellary	Bellary
4	Villages in Alignment	Kakkuppi, Suravanahalli, Agrahara,	Kakkuppi, Suravanahalli, Agrahara,	Kakkuppi, Adavi Sooravana, Harudi Suravanahalli,
5	Forest Area involved	6.3 Ha.	4.338 Ha.	5.178 Ha.
6	Sanctuary / Protected area involved	NIL	NIL	NIL
7	Historical / Cultural monument	NIL	NIL	NIL
8	Reason for selection of Route 2 as the proposed route	Minimum forest area in transmission line route with minimum number of tree cutting suitable at construction engineering aspect.		



A. M.