


NAME OF WORK: DIVERSION OF SURPLUS WATER FROM RAMANADHI RESERVOIR TO JAMBUNADHI SYSTEM OF TANKS AND EXCAVATION OF NEW CANAL FROM PADMANABAPERI TANK TO PUNGANKULAM AND LOWERDOWN TANKS IN TENKASI AND ALANGULAM TALUKS OF TENKASI DISTRICT.

Survey of India Toposheet indicating boundary of Kalakad Mundanthurai Tiger Reserve (KMTR) Protected Core & Buffer Area


NOT FOR EXPORT
OPEN SERIES MAP
No. C43X5
 Scale 1:50,000

Pattanamitta KERALA C43R4 (58G/4)	C43R8 (58G/8)	C43R12 (58G/12)
Kollam KERALA C43X1 (58H/1)	Tranvelly KERALA C43X5 (58H/5)	C43X9 (58H/9)
C43X2 (58H/2)	C43X6 (58H/6)	C43X10 (58H/10)

1 Kanniyakumari, TAMIL NADU.
 2 Tuticorin, TAMIL NADU.

भारतीय सर्वेक्षण विभाग SURVEY OF INDIA
 1st Edition 2010. Price: Rs. 50/-

CONVENTIONAL SYMBOLS
 Express highway with toll, with bridge, with distance stone
 Roads, metalled according to importance
 Roads, double carriageway, according to importance
 Unmetalled road, Cart track, Pack track with pass, Firepath
 Streams with rock in bed, cascaded Canal
 Dams, masonry or rock-filled, with or without spillway
 River, dry with water channel, with island & rocks, Tidal river
 Submerged rocks, Shoal, Swamp, Reeds
 Wells, hand-dug, Tube-well, Spring, Tanks, perennial, dry
 Embankment, road or rail tank, Broken ground
 Railways, broad gauge, double, single with station, under construction
 Railways, other gauges, double, single with distance stone
 Mineral line or terminus, Air, Cable, with tower
 Contours with sea-level, Rocky slopes, Cliff
 Sewer features (1:Flat, 2:Zoned, 3:Intermittent), (3:Intermittent)
 Towns or Villages, inhabited, deserted, Fort
 Hills, permanent, temporary, Tower, Antenna
 Temple, Church, Mosque, Mosque, Temple, Shrine, Other
 Lighthouse, Lightship, Buoy, Light, unlighted, Anchorage
 Mine, View on hills, Grass, Scrub
 Pines, palms, other, Parasol, Conifer, Bamboo, Other trees
 Areas cultivated, wooded, uncultivated
 Boundary, international
 State demarcated, undemarcated
 district, subdivision, taluk or taluk, forest
 Boundary, international
 Heights, triangulation station, approximate
 Bench-mark, geodetic, tertiary, canal
 Post office, Telegraph office, Overhead tank
 Rest house or reception building, Guard house, Police station
 Camping ground, Forest, reserved, prohibited
 Speeded names, administrative, locality or tribal
 Hospital, Dispensary, Veterinary, Hospital / Dispensary
 Aeronautics, Helipad, Towed site
 Power line, with poles surveyed, with poles unsurveyed

REFERENCES
 NH-209 National Highway No. 209
 S.R. Southern Railway

NOTES
 Heights and Contours have not been shown.
 Unmetalled roads and cart tracks are possible in dry season.
 Tanks shown dry in this area, except certain water from October to February.
 Wells are numerous, only important ones have been shown.
 Forest lines are numerous, some of the subsidiary lines connecting tube-wells have been omitted.
 A relative height, e.g., 10, represents the approximate height in metres between the top and bottom of a steep slope.
 Inhabited buildings are shown in black with names.
 Temples with gopurams are shown thus.
 Battered trees are shown thus.
 Christian memorial are shown thus.

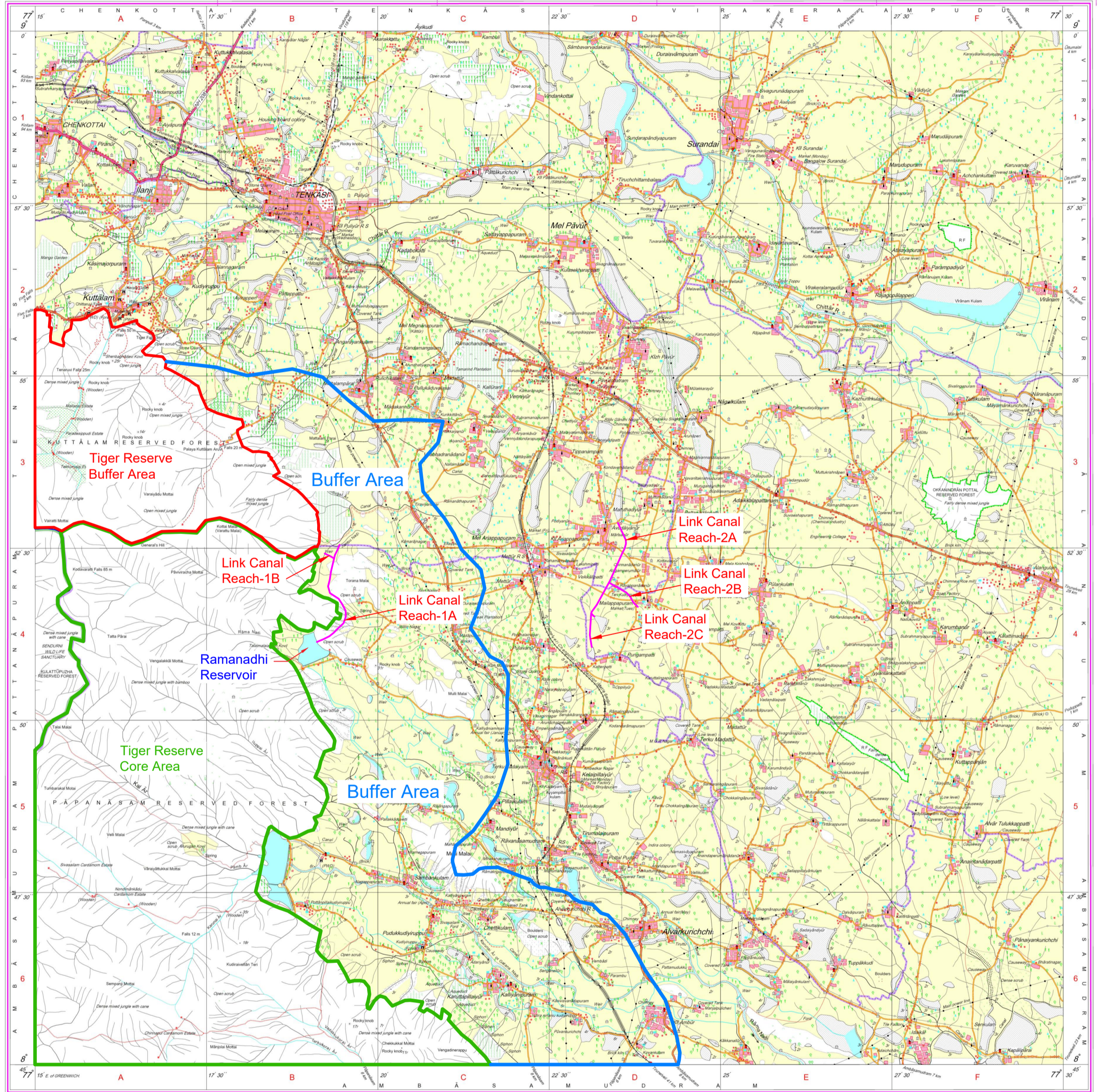
COMPLETION INDEX
 A. Surveyed during 1975-77. Updated for major details during 2004-05.

Projection - UTM Datum - WGS 84
 Magnetic Variation from True North about 2° West in 2005.
 (Decreasing by about 1' annually).
 1:50,000
 500 m to 1 km 2 cm to 1 km
 Metres 1000 500 0 1 2 3 Kilometres





For further details about this map, please contact
 Director
 Kerala and Lakshadweep Geo-Spatial Data Centre
 Survey of India, CGO Complex
 Poochikulam, Vellore P.O., Tiruvananthapuram.

WEBSITE - www.surveyofindia.gov.in
 Reproduction in whole or part by any means is prohibited without the written permission of Survey of India, the National Mapping Agency.

GOVERNMENT OF INDIA COPYRIGHT, 2010.



LEGEND

- Tiger Reserve Core Area 
- Tiger Reserve Buffer Area 
- Buffer Area 
- Proposed Canal 


 21/6/23
 Executive Engineer, WRD,
 Special Project Division
 Trunelveli - 627 011.

REG. No. 15 E of 1962/1963
 Published under the direction of Surveyor General of India
 Survey of India, Hyderabad Estate, Post Box No. 37, Dehra Dun - 248001 (Uttarakhand),
 Department of Science & Technology, Government of India.

PRINTED AT THE SOUTHERN PRINTING GROUP OF SURVEY OF INDIA.