

LOCATION MAP OF KHDF DRILL SITE AND APPROACH ROAD



No. G46J16

Scale 1:50,000

G46J11 (83F/11)	G46J15 (83F/15)	G46K3 (83J/3)
Kārbī Anglong ASSAM	Golaghat ASSAM	
G46J12 (83F/12)	G46J16 (83F/16)	G46K4 (83J/4)
	Wokha NAGALAND	
G46P9 (83G/9)	G46P13 (83G/13)	G46Q1 (83K/1)
	Kohima NAGALAND	

1 Jorhat, ASSAM

भारतीय सर्वेक्षण विभाग

SURVEY OF INDIA

1st Edition 2011.

Price: Rs. 77/-

CONVENTIONAL SYMBOLS

Express highway with toll with bridge with distance stone	
Road, metalled according to importance	
Road, double metalled according to importance	
Unmetalled road. Cart-track. Pack-track with pass. Foot-path.	
Stream, with lock in bed, underfed. Canal.	
Dam, masonry or rock-filled, earthwork. Weir.	
River dry with water channel, with island & rocks. Tidal river.	
Submerged rock. Shoal. Strong flow.	
Well, lined, unlined. Tube-well. Spring. Tank. Perennial, dry.	
Embankment, road or rail, bank. Broken ground.	
Railways, broad gauge double, single with station, under constr.	
Railways, other gauges, double, single with distance stone, do.	
Mixed line or tramway. K.M. Calling with tunnel.	
Contours with sub features. Rocky slopes. Cliff.	
Bound features (Cliff, Overhead, Underpass, etc.)	
Towns or Villages, inhabited, deserted, Fort.	
Hill, permanent, temporary. Tower. Antenna.	
Temple. Chhatra. Church. Mosque. Igloo. Tomb. Graves.	
Lighthouse. Lightship. Buoy, lighted, unlighted. Anchorage.	
Mine. View on traffic. Cross. Road.	
Palms, papyrus, other. Plantain. Coconut. Bamboo. Other trees.	
Area, cultivated, wooded, surveyed, forest.	
Boundary, international.	
state demarcated, undemarcated.	
district, subdivision, taluk or taluk, forest.	
Boundary pillars, surveyed, uncoloured.	
Height, triangulation station, point, approximate.	
Barometer, aneroid, barometer, aneroid.	
Post office, Telegraph office, Overhead tank.	
Rail house or inspection bungalow. Circus house. Police station.	
Camping ground. Forest, reserved, protected.	
Special names, administrative, locality or tribal.	
Hospital, Dispensary, Veterinary Hospital / Dispensary.	
Airfield. Helipad. Tourist site.	
Power line, with pylons surveyed, with poles unsurveyed.	

REFERENCES

NV 39 National Highway No. 39

NOTES

Height and Contour have not been shown.
A station height, e.g., 50, represents the approximate height, in metres, between top and bottom of a steep slope.
The state boundary between Assam and Nagaland states shown on this map is as interpreted from North Eastern Areas (Disputes) Act, 1971 but yet to be settled.
Boundary of sub-division of Golaghat District in Assam has been shown in the sheet but has yet to be settled.
The map is a derivative of the map, on which road has not been shown, can also take limited wheeled traffic. Permission to take vehicles along these embankments is required from the Commissioner & District Officer (P.W.D.) Diphu.
Boundaries of sub-division of Wokha District in Nagaland have not been shown for want of reliable information.
Alongside shown in this sheet are commonly worshipped places.
Barometer have not been shown.

COMPILATION INDEX

A. Compiled from 1:50,000 survey 1980-90. Updated for major details during 2005-06.

Projection - UTM Datum - WGS 84

Magnetic Variation from True North about West in 2005

(increasing by about 1° annually)

1:50,000

500 m 1 km 2 km 3 km

For further details about this map, please contact

Director

Assam & Nagaland Geo-Spatial Data Centre

Survey of India, Ganeshguri Chariali, Dispur

Guwahati.

WEBSITE - www.surveyofindia.gov.in

Reproduction in whole or part by any means is prohibited without the written permission of Survey of India, the National Mapping Agency.

GOVERNMENT OF INDIA COPYRIGHT, 2011.

Legend

Drill Site Area

Safety Zone

Approach Road

KHORAGHAT-EXTN-I-PML

D.G.P.S. COORDINATES OF DRILL SITE

DS1: 594487.61 2884978.79
DS2: 594484.94 2884948.32
DS3: 594653.89 2884845.24
DS4: 594657.67 2884975.41

Drill Site Area: 2.17 Hectares.

D.G.P.S. COORDINATES OF APPROACH ROAD

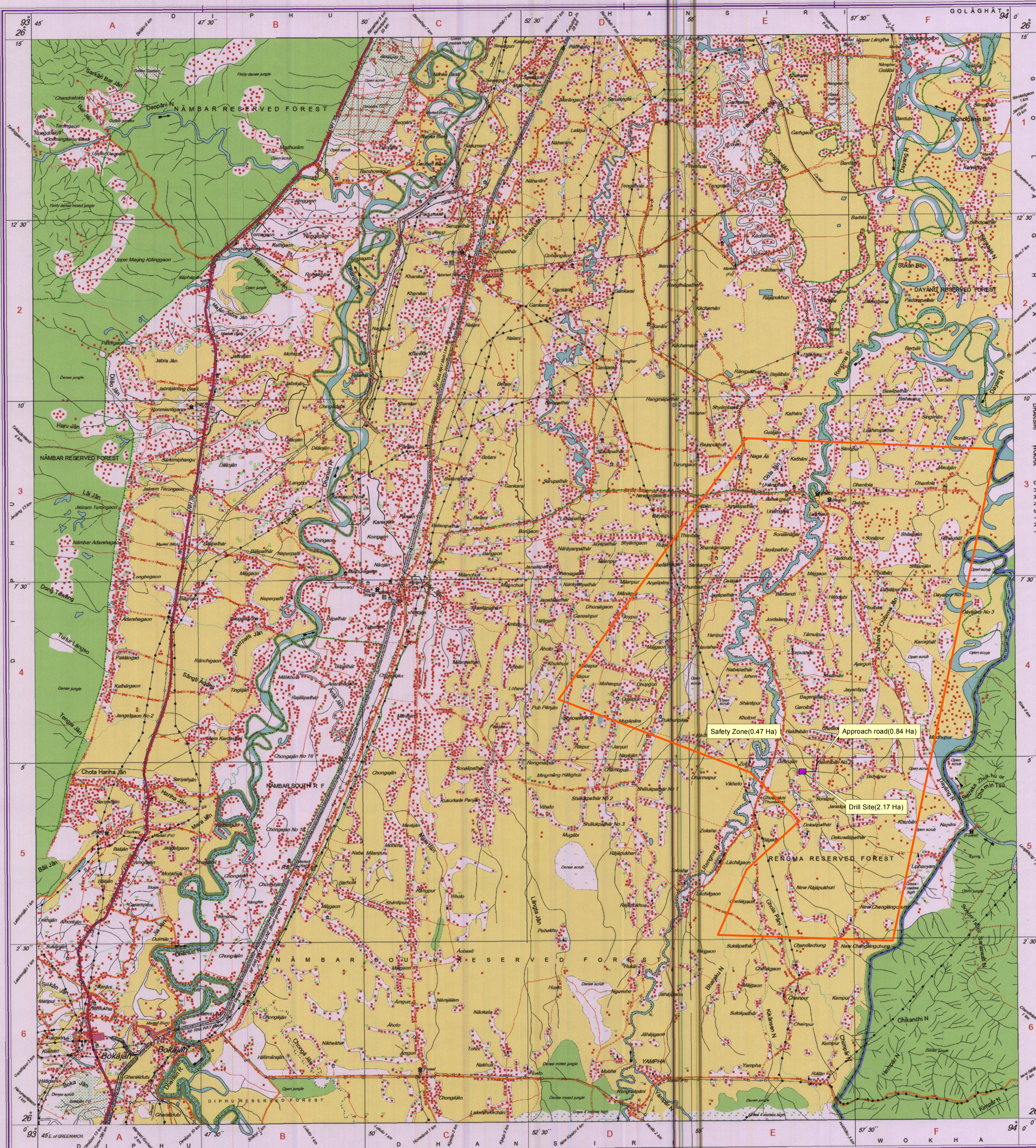
AP1: 594642.61 2884906.38
AP2: 594903.15 2884916.58
AP3: 594950.44 2885324.61
AP4: 594965.19 2885320.92
AP5: 594916.76 2884918.22
AP6: 594916.85 2884905.61
AP7: 594903.24 2884904.58
AP8: 594642.15 2884894.07

Approach Road Area: 0.84 Hectares.
Total Length: 683.41 m, Average Width: 12.27 m.

D.G.P.S. COORDINATES OF SAFETY ZONE

SZ1: 594480.11 2884984.01
SZ2: 594665.17 2884980.91
SZ3: 594661.39 2884837.74
SZ4: 594477.44 2884840.82

Safety Zone Area: 0.47 Hectares.



REG. No. WPD 711 (A & N) GDC 150,000.
Printed under the direction of: Swarna Subba Rao, B.E., Surveyor General of India.
Survey of India, H.B. Barkale Estate, Post Box No. 37, Dehra Dun-248001 (Uttarakhand)
Department of Science & Technology, Government of India.
PRINTED AT THE WESTERN PRINTING GROUP OF SURVEY OF INDIA.