

# ANNEXURE NO.2

REPLY OF QUERY S.NO. 4 D -(II)(A) FINAL LOCATION OF ALTERNATE ALIGNMENT OF BAHUTI CANAL TUNNEL

INDIA  
REFER TO THIS MAP AS - 1:50,000  
SHEET 63 H/7 FIRST EDITION

FIRST EDITION

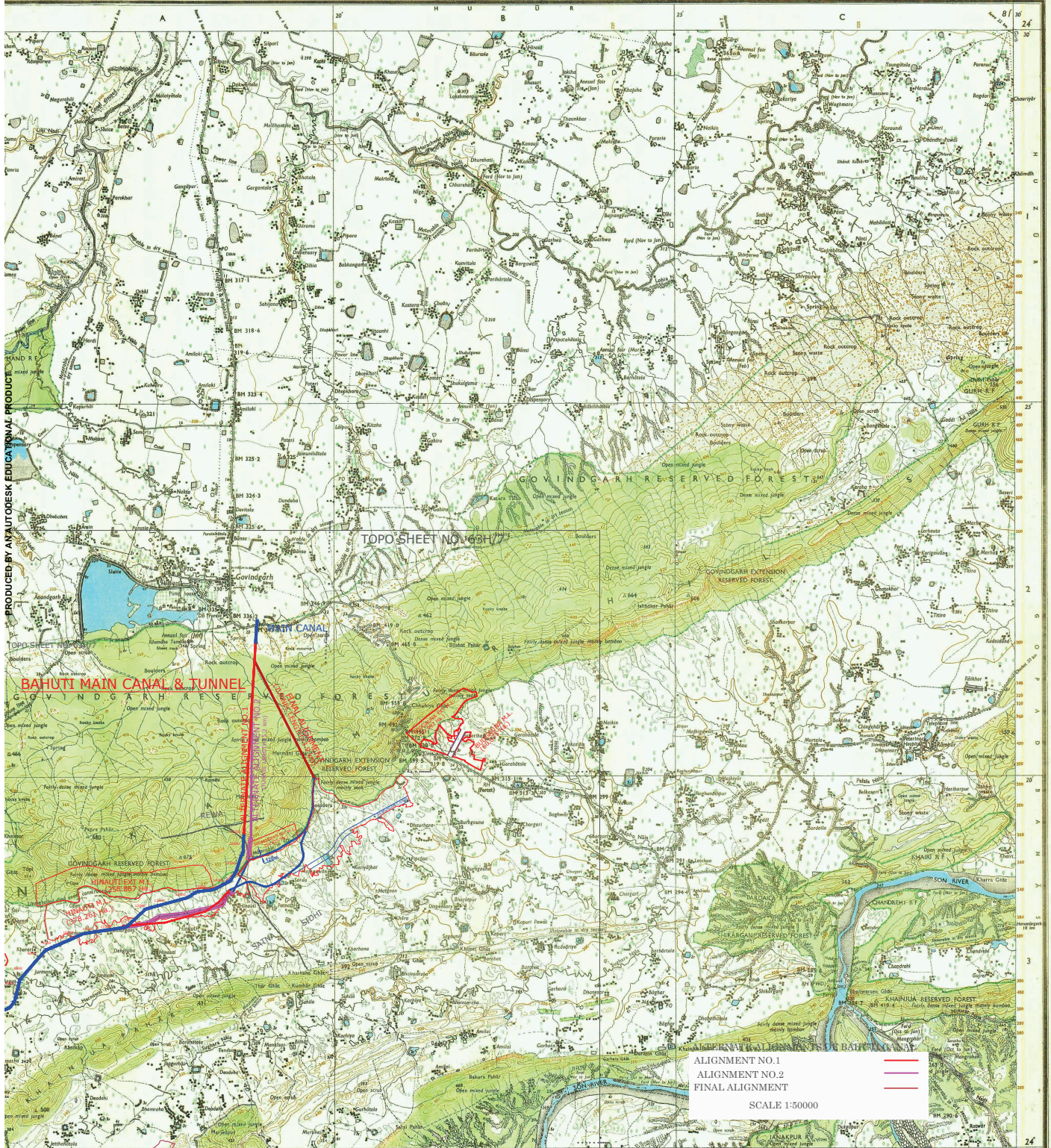
WA, SATNA, SHAHDOL AND  
DHI DISTRICTS.

MADHYA PRADESH

Magnetic Variation from True North about 2° West in 1970.  
(Decreasing by about 1' annually).

No. 63 H/7

Surveyed 1968-69.



PRODUCED BY AN AUTODESK EDUCATIONAL PRODUCT

PRODUCED BY AN AUTODESK EDUCATIONAL PRODUCT