

बिहार
BIHAR

FIRST EDITION

INDIA
REFER TO THIS MAP AS : 1:50,000
SHEET 73 B/13 FIRST EDITION

NO. 73 B/13 05-20

RANCHI DISTRICT.

Surveyed 1978-79.

Magnetic Variation from True North about 4° West in 1975.
(Decreasing by about 1° annually).



Sheet No. 67970-81 (S. 27-1-33-33)-6202/81-55249.

- Index to Sheets
- | | |
|---------|---------|
| 73 A/12 | 73 A/16 |
| 73 B/9 | 73 B/15 |
| 73 B/10 | 73 B/14 |
| 73 B/11 | 73 B/17 |
- Legend:
- Roads: installed, according to importance; distance stone - uninstalled; do. - bridge.
 - Cart-track: thick black line; pass: foot path with bridge.
 - Bridge: with arrow, without: Causeway, ford or ferry.
 - Survey line: with cross to both ends; Canal.
 - Dam: dam on river; Dam on lake.
 - River banks: sloping steep, 3 to 6 metres; over 6 metres - dry with water channel; with island & rocks; tidal river.
 - Submerged areas: Shaded brown; Shaded green.
 - Wells: hand-dug; Tubewell; Spring; Tank; pond; well; do. - with diameter more than 100 ft.
 - Embankment: road or rail track; Road; Ground.
 - Railways: broad gauge; double; single with station; under construction.
 - Other gauges: do. - do. with diameter more than 100 ft.
 - Planned line or boundary: Telegraph line; Casing with tunnel.
 - Contours with sub-features: Rocky slopes; Cliff.
 - Sand features: dunes; dunes with vegetation; dunes with trees.

Index to Sheets

73 A/12	73 A/16
73 B/9	73 B/15
73 B/10	73 B/14
73 B/11	73 B/17

भारत के सर्वेक्षण विभाग द्वारा
Published under the direction of the Survey General of India,
1981.

1:50,000

HEIGHTS & CONTOURS IN METRES
CONTOUR INTERVAL 20 METRES

*Water features are shown in blue where they generally contain water.
*Cultivated areas are coloured yellow.
*The exterior boundaries of areas of Reserved or Protected Forests are shown by green ribbons.
*Contours are approximate.
*A relative height, in feet, represents the approximate height, in metres, between the top and bottom of a steep slope.
*Wooded areas are coloured green. Seasonal trees and other vegetation are in green, but prominent surveyed trees are in black.
*Not applicable.

The kilometre scale numbers along right and left margins are shown in black type, e.g. '5'.
Wells are numerous throughout the sheet; only the important ones have been shown.

Administrative Index

RANCHI

Rakesh Kumar

Rakesh Kumar
राकेश कुमार
सर्वेक्षण (निर्माण) / MANAGER (CONSTRUCTION)
भारत (इंडिया) लिमिटेड / GAIL (INDIA) LIMITED
बोरोना, जिला-रांची-834002 (झारखण्ड) भारत
BORONA, DISTT. RANCHI-834002 (JHARKHAND) INDIA

- Points of Interest:
- Towns or Villages: inhabited; unpopulated.
 - Hill permanent; temporary; Tower; Ancestral.
 - Temple; Chhatra; Church; Mosque; Jagan; Tomb; Graves.
 - Lighthouse; Lightship; Buoy; Lighted; unlighted; Anchorage.
 - Mine; View on terrain; Grass; Scrub.
 - Palms; papyrus; other; Plantain; Cane; Bamboo; Other trees.
 - Boundary: International.
 - State demarcated; undemarcated.
 - District; sub-division; taluk; forest.
 - Boundary pillars: surveyed; uncoloured; village; junction.
 - Height: trigonometrical; station; point; approximate.
 - Bench mark; geodetic; tertiary; road.
 - Post office; Telegraph office; Combined office; Police station; PO; TO; PTO; PS.
 - Bungalows; dak or travellers; inspection; Rest-house.
 - Circuit house; Camping ground; Forest; reserved; protected; CH; CB; PI; PF.
 - Spaced names: administrative; locally or tribal.
 - KIKRI; NAGA.

GOVERNMENT OF INDIA COPYRIGHT, 1981.
SURESH & COMPANY
AGENTS: SURVEY OF INDIA, P.O. DIV.,
4148, ARYA PURA,
SUBZI MANDI, DELHI-7

REFER TO THIS MAP AS : 1:50,000
SHEET 73 B/13 FIRST EDITION
INDIA

बिहार के लिए नहीं
NOT FOR EXPORT

बिहार BIHAR

FIRST EDITION

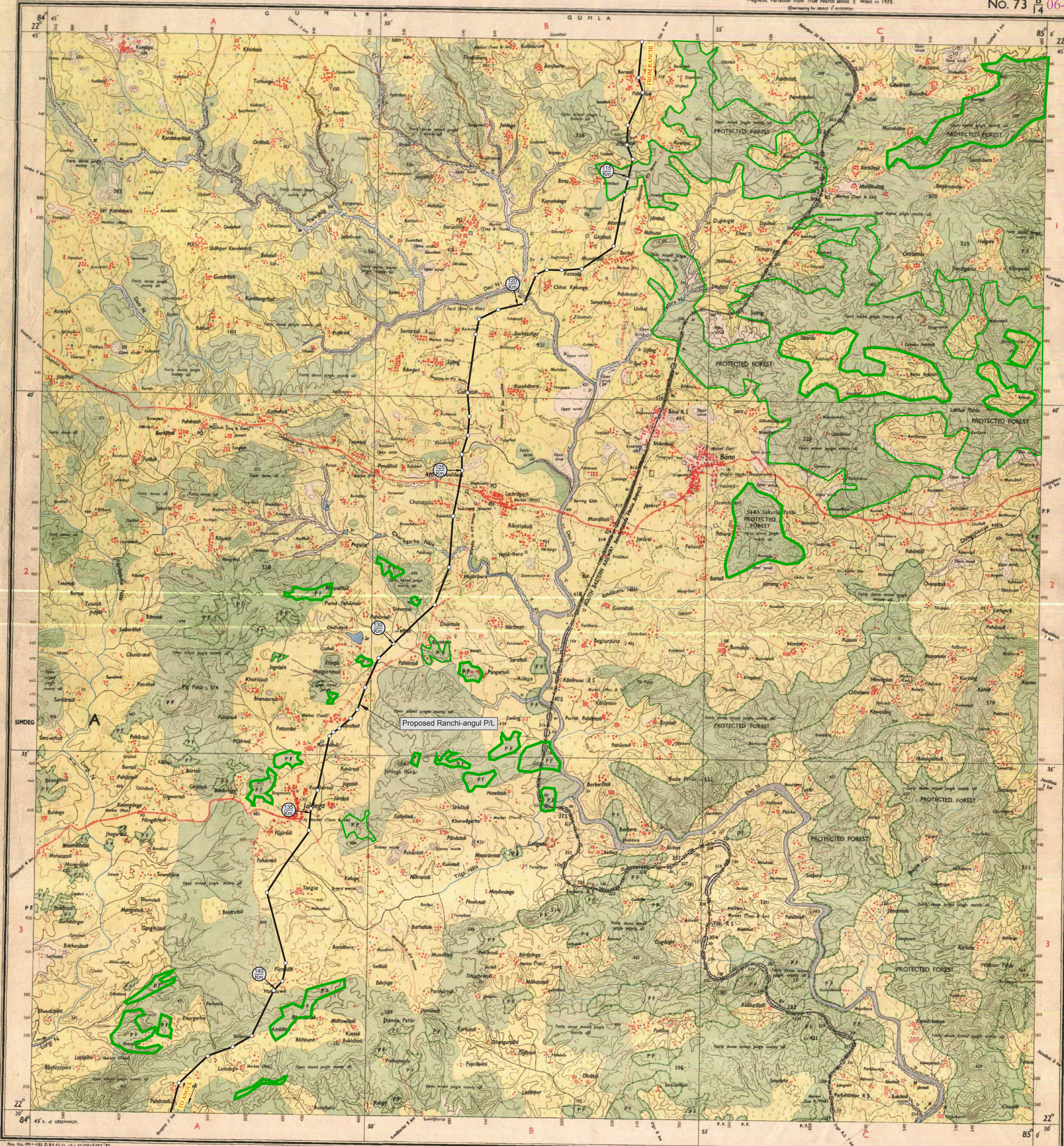
INDIA
REFER TO THIS MAP AS :- 1:50,000
SHEET 73 B/14 FIRST EDITION

No. 73 B/14 06-20

GUMLA DISTRICT.

Surveyed 1978-79.

Magnetic Variation from True North about 1° West in 1975.
(Decreasing by about 1' annually)



- Index to Sheets
- | | | | |
|-------|-------|-------|--------|
| 73/1 | 73/2 | 73/3 | 73/4 |
| 73/5 | 73/6 | 73/7 | 73/8 |
| 73/9 | 73/10 | 73/11 | 73/12 |
| 73/13 | 73/14 | 73/15 | 73/16 |
| 73/17 | 73/18 | 73/19 | 73/20 |
| 73/21 | 73/22 | 73/23 | 73/24 |
| 73/25 | 73/26 | 73/27 | 73/28 |
| 73/29 | 73/30 | 73/31 | 73/32 |
| 73/33 | 73/34 | 73/35 | 73/36 |
| 73/37 | 73/38 | 73/39 | 73/40 |
| 73/41 | 73/42 | 73/43 | 73/44 |
| 73/45 | 73/46 | 73/47 | 73/48 |
| 73/49 | 73/50 | 73/51 | 73/52 |
| 73/53 | 73/54 | 73/55 | 73/56 |
| 73/57 | 73/58 | 73/59 | 73/60 |
| 73/61 | 73/62 | 73/63 | 73/64 |
| 73/65 | 73/66 | 73/67 | 73/68 |
| 73/69 | 73/70 | 73/71 | 73/72 |
| 73/73 | 73/74 | 73/75 | 73/76 |
| 73/77 | 73/78 | 73/79 | 73/80 |
| 73/81 | 73/82 | 73/83 | 73/84 |
| 73/85 | 73/86 | 73/87 | 73/88 |
| 73/89 | 73/90 | 73/91 | 73/92 |
| 73/93 | 73/94 | 73/95 | 73/96 |
| 73/97 | 73/98 | 73/99 | 73/100 |
- 1st Edition 1984.
Previous editions on this scale: 1914/1915, 1947, 1964.

- Heights & Contours in Metres
Contour Interval 20 Metres
- Water features are shown in blue where they generally contain water.
Cultivated areas are coloured yellow.
The exterior boundaries of areas of Reserved or Protected Forests are shown by green ribbons.
- Contours are approximate.
A relative height, 40, represents the approximate height, in metres, between the top and bottom of a steep slope.
Wooded areas are coloured green. Scattered trees and other vegetation are in green, but prominent surveyed trees are in black.

- Administrative Index
- GUMLA
- Terms or Villages: inhabited, deserted, Fort, Halls, permanent, temporary, Tower, Antiquities, Temple, Chhatra, Church, Mosque, Jyoti, Tomb, Grave, Lighthouse, Lightship, Buoy, Lighted, unlighted, Anchorage, Mine, Vine on tree, Grass, Scrub, Palm, Paddy, other, Panch, Conifer, Bamboo, Other trees, Boundary, International, state, demarcated, undemarcated, district, sub-division, taluk, forest, Boundary pillars surveyed, unlocated, village, junction, Height, triangulated station, points, approximate, Bench mark, Gadget, tertiary, canal, Post office, Telegraph office, Combined office, Police station, PD, TO, PTO, PS, Bungalow, dak or travellers, inspection, Rest-house, DB, IB, (Contd) BH (Forest), Circuit House, Camping ground, forest, reserved, protected, CH, CE, BF, PF, Spaced names: administrative, locally or tribal, KIKRI, NAGA

REFER TO THIS MAP AS :- 1:50,000
SHEET 73 B/14 FIRST EDITION
INDIA

Rakesh Kumar
राकेश कुमार
प्रबंधक (निर्माण) / MANAGER (CONSTRUCTION)
नेट (हॉलिंग) लिमिटेड / GAIL (INDIA) LIMITED
बोरो, जिला-राँची-834002 (झारखण्ड) भारत
CORANDA, DIST. RANCHI-834002 (JHARKHAND) INDIA

GOVERNMENT OF INDIA COPYRIGHT, 1984.
SCIENTIFIC INSTRUMENTS STORES
J-355, New Rajinder Nagar, New Delhi-110060
Tel. 5761501, 5745527