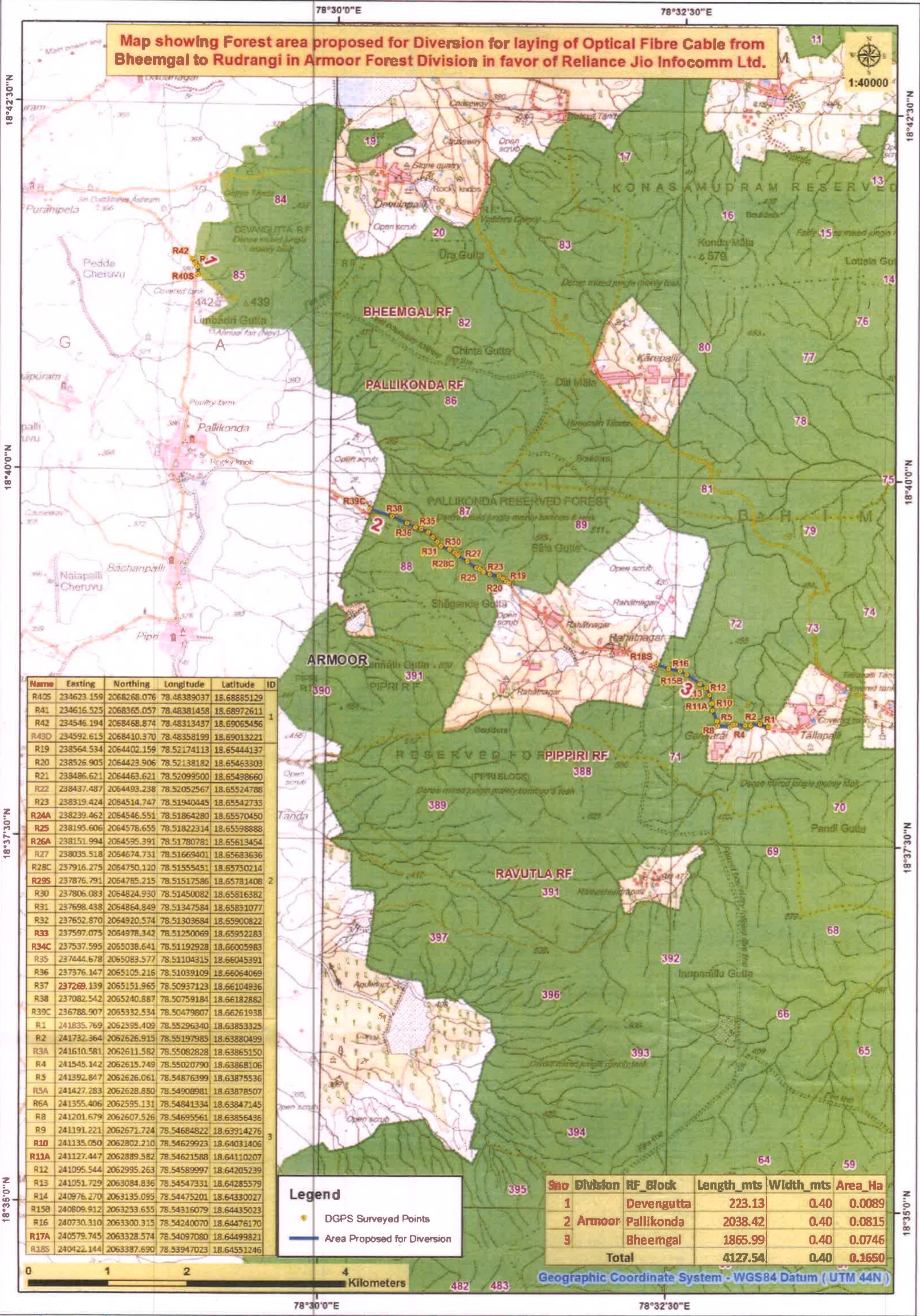


**Map showing Forest area proposed for Diversion for laying of Optical Fibre Cable from Bheemgal to Rudrangi in Armoor Forest Division in favor of Reliance Jio Infocomm Ltd.**



Name	Easting	Northing	Longitude	Latitude	ID
R40S	234623.159	2068268.076	78.48389037	18.68885129	1
R41	234616.525	2068365.057	78.48381458	18.68972611	
R42	234546.194	2068468.874	78.48313437	18.69065456	
R43D	234592.615	2068410.370	78.48358199	18.69013221	
R19	238564.534	2064402.159	78.52174113	18.65444137	
R20	238526.905	2064423.906	78.52138182	18.65463303	
R21	238486.621	2064463.621	78.52099500	18.65498660	
R22	238437.487	2064493.238	78.52052567	18.65524788	
R23	238319.424	2064514.747	78.51940445	18.65542733	
R24A	238239.462	2064546.551	78.51864280	18.65570450	
R25	238195.606	2064578.655	78.51822314	18.65598888	
R26A	238151.994	2064595.391	78.51780781	18.65613454	
R27	238035.518	2064674.731	78.51669401	18.65636366	
R28C	237916.275	2064750.120	78.51555451	18.65730214	
R29S	237876.791	2064785.215	78.51517586	18.65781408	
R30	237806.083	2064824.930	78.51450082	18.65816382	
R31	237698.438	2064864.849	78.51347584	18.65851077	
R32	237652.870	2064920.574	78.51303684	18.65900822	
R33	237597.075	2064978.342	78.51250069	18.65952283	
R34C	237537.595	2065038.641	78.51192928	18.66005963	
R35	237444.678	2065083.577	78.51104315	18.66045391	
R36	237376.147	2065105.216	78.51039109	18.66064069	
R37	237269.139	2065151.965	78.50937123	18.66104936	
R38	237082.542	2065240.887	78.50759184	18.66182882	
R39C	236788.907	2065332.534	78.50479607	18.66261938	
R1	241835.769	2062595.409	78.55296340	18.63853325	
R2	241732.364	2062626.915	78.55197985	18.63880499	
R3A	241610.581	2062611.582	78.55082828	18.63865150	
R4	241545.142	2062615.749	78.55020790	18.63868106	
R5	241392.847	2062626.061	78.54876399	18.63875536	
R5A	241427.283	2062628.880	78.54908981	18.63878507	
R6A	241355.406	2062595.131	78.54841334	18.63847145	
R8	241201.679	2062607.526	78.54695561	18.63856436	
R9	241191.221	2062671.724	78.54684822	18.63914276	
R10	241135.050	2062802.210	78.54629923	18.64031406	
R11A	241127.447	2062889.582	78.54621588	18.64110207	
R12	241095.544	2062995.263	78.54589997	18.64205239	
R13	241051.729	2063084.836	78.54547331	18.64285579	
R14	240976.270	2063135.095	78.54475201	18.64330927	
R15B	240809.912	2063253.655	78.54316079	18.64435023	
R16	240730.310	2063300.315	78.54240070	18.64476170	
R17A	240579.745	2063328.574	78.54097080	18.64499821	
R18S	240422.144	2063387.690	78.53947023	18.64551246	

**Legend**

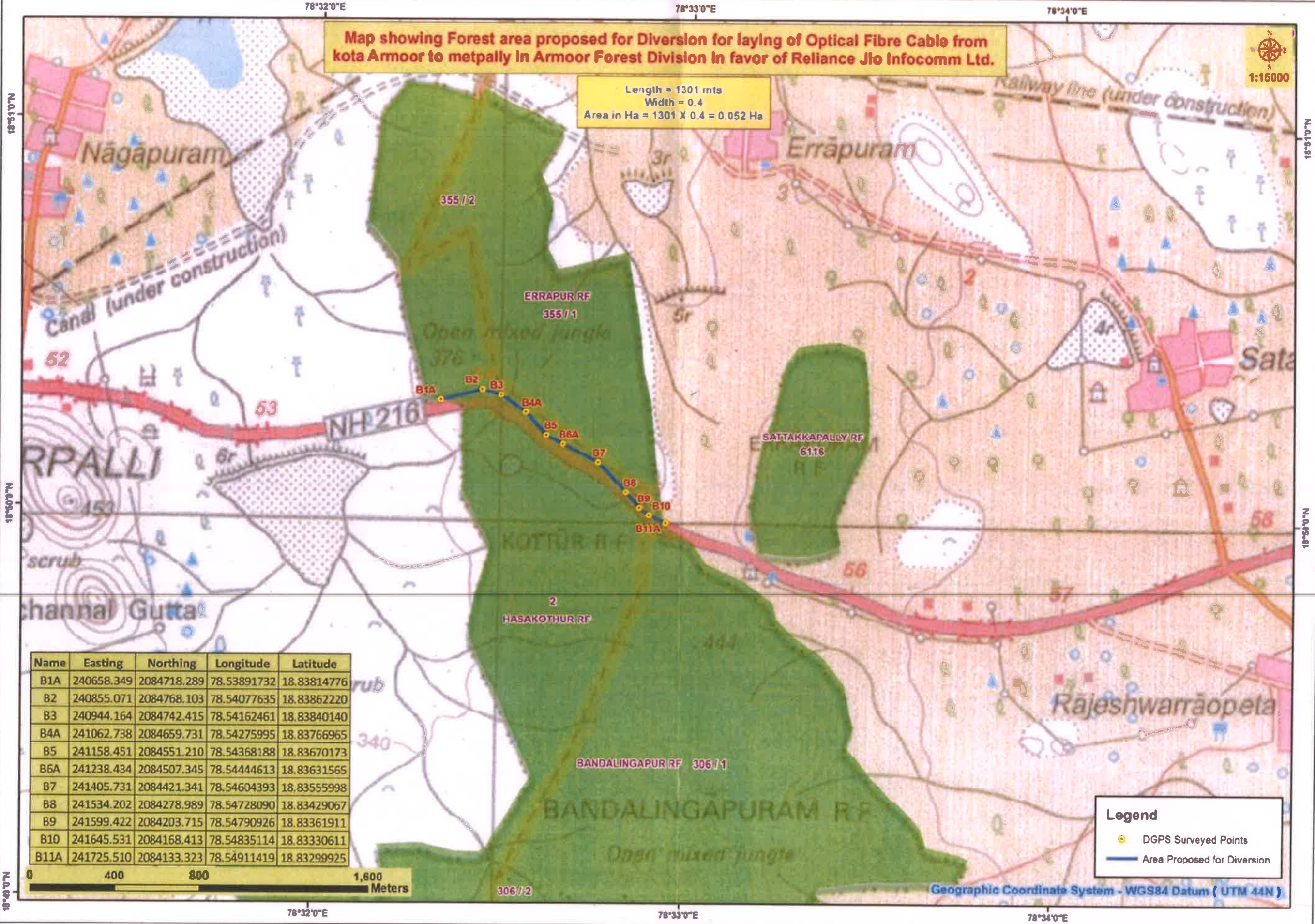
- DGPS Surveyed Points
- Area Proposed for Diversion

Sno	Division	RF_Block	Length_mts	Width_mts	Area_Ha
1		Devengutta	223.13	0.40	0.0089
2	Armoor	Pallikonda	2038.42	0.40	0.0815
3		Bheemgal	1865.99	0.40	0.0746
<b>Total</b>			<b>4127.54</b>	<b>0.40</b>	<b>0.1650</b>

*Handwritten signature*

**Map showing Forest area proposed for Diversion for laying of Optical Fibre Cable from kota Armour to metpally in Armour Forest Division In favor of Reliance Jio Infocomm Ltd.**

Length = 1301 mts  
 Width = 0.4  
 Area in Ha = 1301 X 0.4 = 0.052 Ha



Name	Easting	Northing	Longitude	Latitude
B1A	240658.349	2084718.289	78.53891732	18.83814776
B2	240855.071	2084768.103	78.54077635	18.83862220
B3	240944.164	2084742.415	78.54162461	18.83840140
B4A	241062.738	2084659.731	78.54275995	18.83766965
B5	241158.451	2084551.210	78.54368188	18.83670173
B6A	241238.434	2084507.345	78.54444613	18.83631565
B7	241405.731	2084421.341	78.54604393	18.83555998
B8	241534.202	2084278.989	78.54728090	18.83429067
B9	241599.422	2084203.715	78.54790926	18.83361911
B10	241645.531	2084168.413	78.54835114	18.83330611
B11A	241725.510	2084133.323	78.54911419	18.83299925

**Legend**  
 DGPS Surveyed Points  
 Area Proposed for Diversion

Geographic Coordinate System - WGS84 Datum ( UTM 44N )

*Kulkarni*

**Map showing Forest area proposed for Diversion for laying of Optical Fibre Cable from Nizamabad to kota Armour in Armour Forest Division in favor of Reliance Jio Infocomm Ltd.**

Length = 3938.84 mts  
 Width = 0.4  
 Area in Ha = 3938.84 X 0.4 = 0.1576 Ha

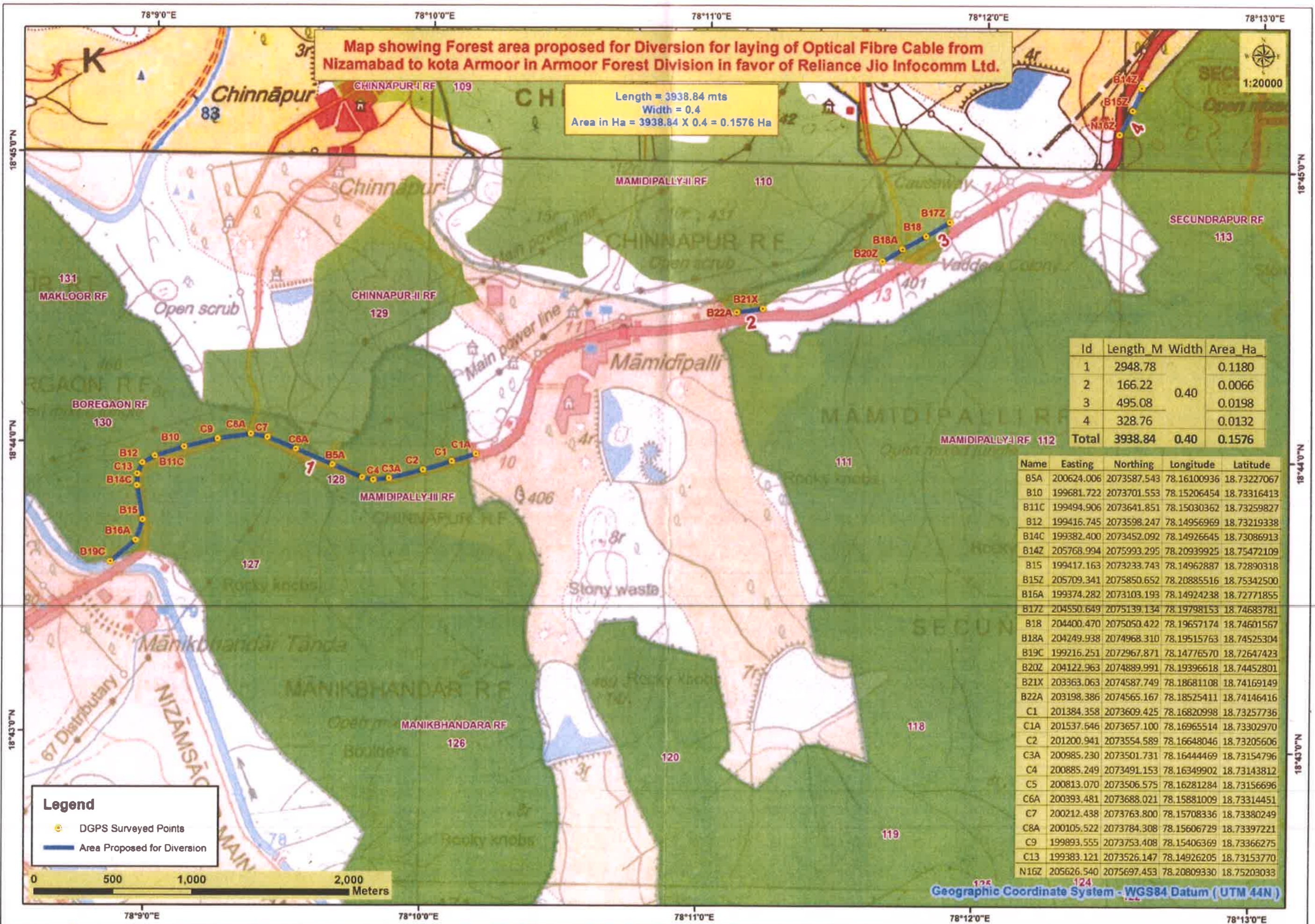
Id	Length M	Width	Area Ha
1	2948.78		0.1180
2	166.22	0.40	0.0066
3	495.08		0.0198
4	328.76		0.0132
<b>Total</b>	<b>3938.84</b>	<b>0.40</b>	<b>0.1576</b>

Name	Easting	Northing	Longitude	Latitude
B5A	200624.006	2073587.543	78.16100936	18.73227067
B10	199681.722	2073701.553	78.15206454	18.73316413
B11C	199494.906	2073641.851	78.15030362	18.73259827
B12	199416.745	2073598.247	78.14956969	18.73219338
B14C	199382.400	2073452.092	78.14926645	18.73086913
B14Z	205768.994	2075993.295	78.20939925	18.75472109
B15	199417.163	2073233.743	78.14962887	18.72890318
B15Z	205709.341	2075850.652	78.20885516	18.75342500
B16A	199374.282	2073103.193	78.14924238	18.72771855
B17Z	204550.649	2075139.134	78.19798153	18.74683781
B18	204400.470	2075050.422	78.19657174	18.74601567
B18A	204249.938	2074968.310	78.19515763	18.74525304
B19C	199216.251	2072967.871	78.14776570	18.72647423
B20Z	204122.963	2074889.991	78.19396618	18.74452801
B21X	203363.063	2074587.749	78.18681108	18.74169149
B22A	203198.386	2074565.167	78.18525411	18.74146416
C1	201384.358	2073609.425	78.16820998	18.73257736
C1A	201537.646	2073657.100	78.16965514	18.73302970
C2	201200.941	2073554.589	78.16644469	18.73154796
C3A	200985.230	2073501.731	78.16444469	18.73154796
C4	200885.249	2073491.153	78.16349902	18.73143812
C5	200813.070	2073506.575	78.16281284	18.73156696
C6A	200393.481	2073688.021	78.15881009	18.73314451
C7	200212.438	2073763.800	78.15708336	18.73380249
C8A	200105.522	2073784.308	78.15606729	18.73397221
C9	199893.555	2073753.408	78.15406369	18.73366275
C13	199383.121	2073526.147	78.14926205	18.73153770
N16Z	205626.540	2075697.453	78.20809330	18.75203033

**Legend**  
 ● DGPS Surveyed Points  
 — Area Proposed for Diversion



Geographic Coordinate System - WGS84 Datum (UTM 44N)



*Kandhar*