



निर्वात के लिए नहीं NOT FOR EXPORT

OPEN SERIES
MAP

No. F42E4

Scale 1:50,000

F42D15 (41E/15)	F42E3 (41I/3)	F42E7 (41I/7)
F42D16 (41E/16)	F42E4 (41I/4)	F42E8 (41I/8)
F42J13 (41F/13)	F42K1 (41J/1) GULF OF KACHCHH	F42K5 (41J/5) Jamnagar GUJARAT

1 Rajkot, GUJARAT.

भारतीय सर्वेक्षण विभाग

SURVEY OF INDIA

1st Edition 2011.

Price : Rs. 70/-

CONVENTIONAL SYMBOLS

Express highway with toll, with bridge, with distance stone	
Roads, metalled, according to importance	
Roads, double carriageway, according to importance	
Unmetalled road, Cart-track, Pack-track with pass, Foot-path	
Streams, with track in bed, undefined, Canal	
Dams, masonry or rock-filled, earthwork, Weir	
River, dry with water channel, with island & rocks, Tidal river	
Submerged rocks, Shoal, Swamp, Reeds	
Wells, lined, unlined, Tube-well, Spring, Tanks, perennial, dry	
Embankments, road or rail, tank, Broken ground	
Railways, broad gauge, double, single with station, under constn.	
Railways, other gauges, double, single with distance stone, do.	
Mineral line or tramway, Kin, Cutting with tunnel	
Contours with sub-features, Rocky slopes, Cliffs	
Sand features (1) flat, (2) sand-hills (permanent), (3) dunes (shifting)	
Towns or Villages, inhabited, deserted, Fort	
Hills, permanent, temporary, Tower, Antiquities	
Temple, Chhatra, Church, Mosque, High, Tomb, Graves	
Lighthouse, Lightship, Buoys, lighted, unlighted, Anchorage	
Mine, Vine on trellis, Grass, Scrub	
Palms, palmyra, other, Plantain, Conifer, Bamboo, Other trees	
Areas, cultivated, wooded, Surveyed trees	
Boundary, international	
state, demarcated, undemarcated	
district, subdivision, tahsil or taluk, forest	
Boundary pillars, surveyed, unlocated	
Heights, triangulated, station, point, approximate	
BM 63-3, BM 63-3	
Post office, Overhead tank	
Rest house or inspection bungalow, Circuit house, Police station	
Camping ground, Forest, reserved, protected	
Spaced names: administrative, locality or tribal	
Hospital, Dispensary, Veterinary Hospital / Dispensary	
Aerodrome, Helipad, Tourist site	
Power line, with pylons surveyed, with poles unsurveyed	

REFERENCES

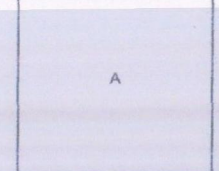
NH 64 National Highway No. 64. (IPCC) Indian Foods & fertilizers Corporation.

NOTES

Heights and Contours have not been shown.
A relative height, 8, represents the approximate height, between the top and bottom of a steep slope.
Tanks, shown dry in this area usually contain water from July to November.
Cultivation is periodic and dependent on rainfall.
Area in this sheet, other than that of Anjar, Bhachau and Gandhidham talukas, is not included any taluk, but is part of Kachchh District.

COMPILATION INDEX

A. Surveyed during 1987-88. Updated for major details during 2003-04.



Projection - UTM Datum - WGS 84

Magnetic Variation from True North about 1/4° West in 2005.
(Decreasing by about 1' annually).

1:50,000

Metres 1000 500 0 1 2 3 Kilometres

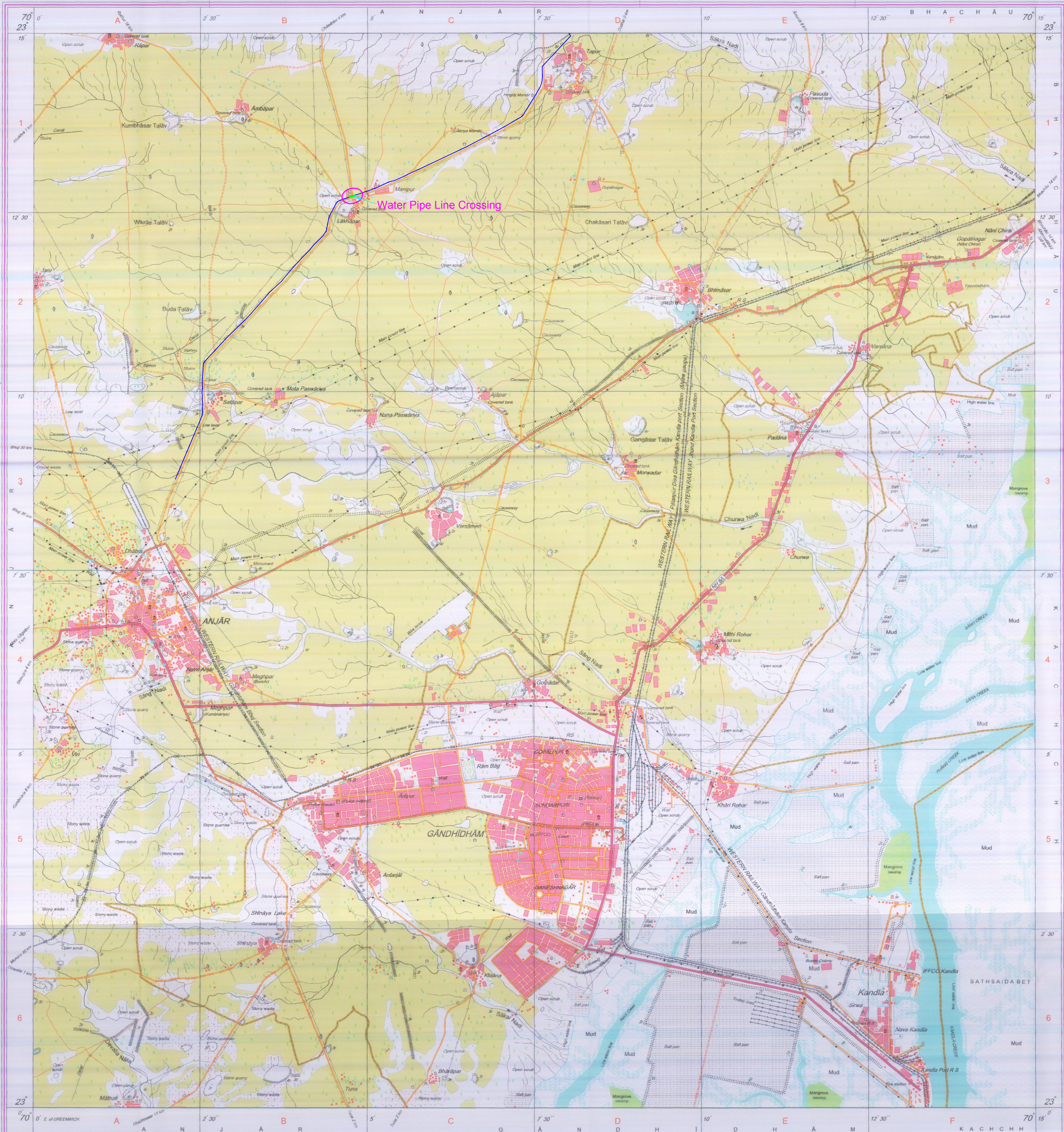
For further details about this map, please contact

Director
Gujarat, Damam & Diu Geo-Spatial Data Centre
Survey of India, Sector-10 (A)
Gandhinagar.

WEBSITE - www.surveyofindia.gov.in

Reproduction in whole or part by any means is prohibited
without the written permission of Survey of India, the
National Mapping Agency.

GOVERNMENT OF INDIA COPYRIGHT, 2011.



REG. No. -SPG D11 (GD&D GDC-150,000)

water pipe line

भारत के सर्वेक्षण, सर्वेक्षण, सर्वेक्षण, के निदेशन से प्रकाशित,
Published under the direction of Swarna Subba Rao, B.E., Surveyor General of India,
Survey of India, Hattibarkala Estate, Post Box No. 37, Dehra Dun-248001 (Uttarakhand)
Department of Science & Technology, Government of India.

PRINTED AT THE SOUTHERN PRINTING GROUP OF SURVEY OF INDIA.

Executive Engineer
P.H.W. Division, Anjar