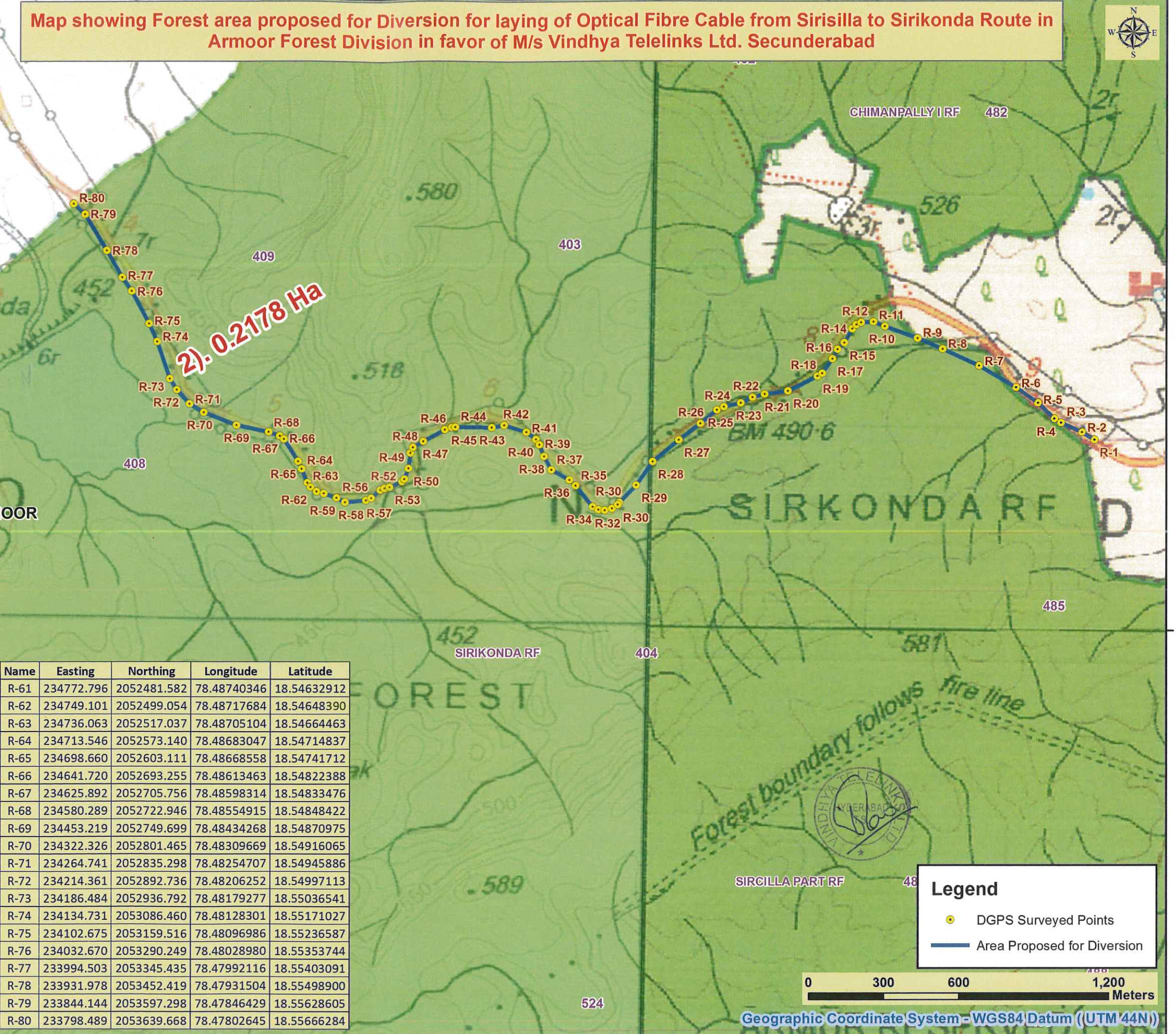


Map showing Forest area proposed for Diversion for laying of Optical Fibre Cable from Sirisilla to Sirikonda Route in
Armor Forest Division in favor of M/s Vindhya Telelinks Ltd. Secunderabad



Name	Easting	Northing	Longitude	Latitude
R-1	237886.605	2052689.675	78.51685401	18.54859826
R-2	237837.193	2052720.243	78.51638223	18.54886812
R-3	237753.762	2052758.340	78.51558741	18.54920172
R-4	237727.223	2052774.232	78.51533409	18.54934191
R-5	237660.777	2052837.692	78.51469675	18.54990664
R-6	237572.768	2052900.641	78.51385534	18.55046407
R-7	237424.816	2052987.437	78.51244331	18.55122934
R-8	237278.311	2053055.286	78.51104744	18.55182370
R-9	237177.876	2053098.873	78.51009091	18.55220472
R-10	237047.747	2053146.977	78.50885265	18.55262282
R-11	237001.661	2053164.957	78.50841399	18.55277940
R-12	236951.994	2053162.442	78.50794412	18.55275049
R-13	236933.425	2053153.487	78.50776950	18.55266730
R-14	236917.119	2053136.917	78.50761729	18.55251565
R-15	236884.774	2053080.252	78.50731851	18.55199994
R-16	236857.537	2053053.527	78.50706416	18.55175522
R-17	236837.198	2053016.369	78.50687648	18.55141716
R-18	236796.560	2052958.023	78.50649941	18.55088524
R-19	236778.507	2052945.897	78.50633009	18.55077349
R-20	236659.748	2052886.231	78.50521363	18.55021988
R-21	236566.932	2052873.282	78.50433664	18.55009133
R-22	236518.721	2052860.582	78.50388189	18.54997062
R-23	236471.536	2052837.799	78.50343819	18.54975900
R-24	236404.650	2052822.957	78.50280693	18.54961660
R-25	236377.261	2052810.282	78.50254930	18.54949872
R-26	236311.138	2052755.447	78.50193053	18.54899530
R-27	236224.338	2052690.122	78.50111738	18.54839457
R-28	236120.627	2052602.172	78.50014713	18.54758743
R-29	236054.567	2052506.917	78.49953428	18.54671904
R-30	235986.355	2052436.157	78.49889784	18.54607156
R-30	235981.031	2052427.261	78.49884861	18.54599056
R-31	235957.383	2052412.389	78.49862670	18.54585331
R-32	235928.170	2052404.507	78.49835118	18.54577847
R-33	235902.954	2052408.010	78.49811201	18.54580694
R-34	235880.173	2052418.871	78.49789492	18.54590215
R-35	235811.505	2052504.315	78.49723361	18.54666505
R-36	235787.413	2052526.797	78.49700258	18.54686502
R-37	235714.971	2052566.978	78.49631150	18.54721874
R-38	235685.553	2052622.397	78.49602571	18.54771544
R-39	235666.607	2052668.875	78.49584023	18.54813274
R-40	235652.607	2052690.652	78.49570483	18.54832761
R-41	235615.059	2052719.680	78.49534554	18.54858500
R-42	235525.628	2052747.817	78.49449521	18.54882782
R-43	235476.633	2052739.266	78.49403251	18.54874445
R-44	235330.617	2052741.040	78.49264996	18.54874211
R-45	235316.143	2052739.855	78.49251309	18.54872959
R-46	235288.728	2052731.161	78.49225471	18.54864764
R-47	235202.373	2052684.366	78.49144337	18.54821424
R-48	235159.666	2052660.053	78.49104229	18.54798934
R-49	235149.771	2052637.284	78.49095162	18.54778250
R-50	235141.793	2052574.673	78.49088435	18.54721616
R-51	235125.898	2052532.450	78.49073945	18.54683291
R-52	235116.320	2052521.212	78.49065026	18.54673023
R-53	235065.965	2052498.768	78.49017653	18.54652123
R-54	235045.218	2052493.953	78.48998076	18.54647514
R-55	235028.809	2052487.211	78.48982631	18.54641221
R-56	234992.868	2052454.599	78.48949038	18.54611321
R-57	234970.324	2052445.494	78.48927816	18.54602816
R-58	234886.498	2052438.008	78.48848560	18.54595001
R-59	234852.720	2052456.386	78.48816340	18.54611170
R-60	234801.563	2052473.028	78.48767692	18.54625551
R-61	234772.796	2052481.582	78.48740346	18.54632912
R-62	234749.101	2052499.054	78.48717684	18.54648390
R-63	234736.063	2052517.037	78.48705104	18.54664463
R-64	234713.546	2052573.140	78.48683047	18.54714837
R-65	234698.660	2052603.111	78.48668558	18.54741712
R-66	234641.720	2052693.255	78.48613463	18.54822388
R-67	234625.892	2052705.756	78.48598314	18.54833476
R-68	234580.289	2052722.946	78.48554915	18.54848422
R-69	234453.219	2052749.699	78.48434268	18.54870975
R-70	234322.326	2052801.465	78.48309669	18.54916065
R-71	234264.741	2052835.298	78.48254707	18.54945886
R-72	234214.361	2052892.736	78.48206252	18.54997113
R-73	234186.484	2052936.792	78.48179277	18.55036541
R-74	234134.731	2053086.460	78.48128301	18.55171027
R-75	234102.675	2053159.516	78.48096986	18.55236587
R-76	234032.670	2053290.249	78.48028980	18.55353744
R-77	233994.503	2053345.435	78.47992116	18.55403091
R-78	233931.978	2053452.419	78.47931504	18.55498900
R-79	233844.144	2053597.298	78.47846429	18.55628605
R-80	233798.489	2053639.668	78.47802645	18.55666284

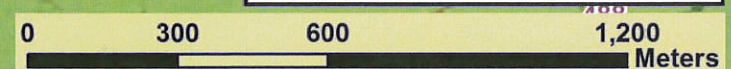


2). 0.2178 Ha

Name	Easting	Northing	Longitude	Latitude
R-61	234772.796	2052481.582	78.48740346	18.54632912
R-62	234749.101	2052499.054	78.48717684	18.54648390
R-63	234736.063	2052517.037	78.48705104	18.54664463
R-64	234713.546	2052573.140	78.48683047	18.54714837
R-65	234698.660	2052603.111	78.48668558	18.54741712
R-66	234641.720	2052693.255	78.48613463	18.54822388
R-67	234625.892	2052705.756	78.48598314	18.54833476
R-68	234580.289	2052722.946	78.48554915	18.54848422
R-69	234453.219	2052749.699	78.48434268	18.54870975
R-70	234322.326	2052801.465	78.48309669	18.54916065
R-71	234264.741	2052835.298	78.48254707	18.54945886
R-72	234214.361	2052892.736	78.48206252	18.54997113
R-73	234186.484	2052936.792	78.48179277	18.55036541
R-74	234134.731	2053086.460	78.48128301	18.55171027
R-75	234102.675	2053159.516	78.48096986	18.55236587
R-76	234032.670	2053290.249	78.48028980	18.55353744
R-77	233994.503	2053345.435	78.47992116	18.55403091
R-78	233931.978	2053452.419	78.47931504	18.55498900
R-79	233844.144	2053597.298	78.47846429	18.55628605
R-80	233798.489	2053639.668	78.47802645	18.55666284

Legend

- DGMS Surveyed Points
- Area Proposed for Diversion

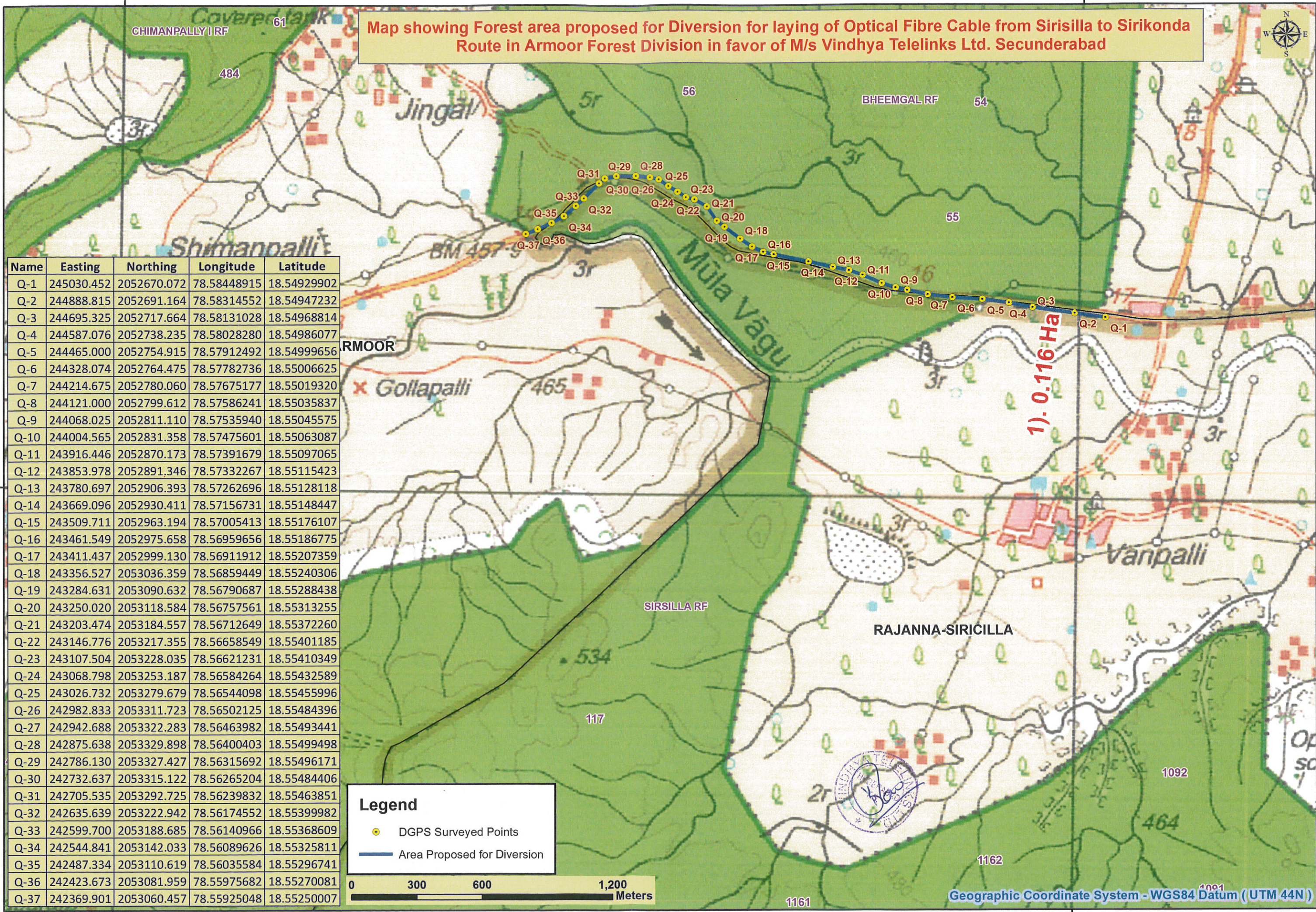


Geographic Coordinate System - WGS84 Datum (UTM 44N)

78°32'30"E

78°35'0"E

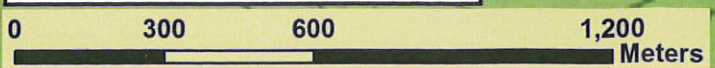
Map showing Forest area proposed for Diversion for laying of Optical Fibre Cable from Sirisilla to Sirikonda Route in Armoor Forest Division in favor of M/s Vindhya Telelinks Ltd. Secunderabad



Name	Easting	Northing	Longitude	Latitude
Q-1	245030.452	2052670.072	78.58448915	18.54929902
Q-2	244888.815	2052691.164	78.58314552	18.54947232
Q-3	244695.325	2052717.664	78.58131028	18.54968814
Q-4	244587.076	2052738.235	78.58028280	18.54986077
Q-5	244465.000	2052754.915	78.57912492	18.54999656
Q-6	244328.074	2052764.475	78.57782736	18.55006625
Q-7	244214.675	2052780.060	78.57675177	18.55019320
Q-8	244121.000	2052799.612	78.57586241	18.55035837
Q-9	244068.025	2052811.110	78.57535940	18.55045575
Q-10	244004.565	2052831.358	78.57475601	18.55063087
Q-11	243916.446	2052870.173	78.57391679	18.55097065
Q-12	243853.978	2052891.346	78.57332267	18.55115423
Q-13	243780.697	2052906.393	78.57262696	18.55128118
Q-14	243669.096	2052930.411	78.57156731	18.55148447
Q-15	243509.711	2052963.194	78.57005413	18.55176107
Q-16	243461.549	2052975.658	78.56959656	18.55186775
Q-17	243411.437	2052999.130	78.56911912	18.55207359
Q-18	243356.527	2053036.359	78.56859449	18.55240306
Q-19	243284.631	2053090.632	78.56790687	18.55288438
Q-20	243250.020	2053118.584	78.56757561	18.55313255
Q-21	243203.474	2053184.557	78.56712649	18.55372260
Q-22	243146.776	2053217.355	78.56658549	18.55401185
Q-23	243107.504	2053228.035	78.56621231	18.55410349
Q-24	243068.798	2053253.187	78.56584264	18.55432589
Q-25	243026.732	2053279.679	78.56544098	18.55455996
Q-26	242982.833	2053311.723	78.56502125	18.55484396
Q-27	242942.688	2053322.283	78.56463982	18.55493441
Q-28	242875.638	2053329.898	78.56400403	18.55499498
Q-29	242786.130	2053327.427	78.56315692	18.55496171
Q-30	242732.637	2053315.122	78.56265204	18.55484406
Q-31	242705.535	2053292.725	78.56239832	18.55463851
Q-32	242635.639	2053222.942	78.56174552	18.55399982
Q-33	242599.700	2053188.685	78.56140966	18.55368609
Q-34	242544.841	2053142.033	78.56089626	18.55325811
Q-35	242487.334	2053110.619	78.56035584	18.55296741
Q-36	242423.673	2053081.959	78.55975682	18.55270081
Q-37	242369.901	2053060.457	78.55925048	18.55250007

Legend

- DGPS Surveyed Points
- Area Proposed for Diversion



Geographic Coordinate System - WGS84 Datum (UTM 44N)

78°32'30"E

78°35'0"E