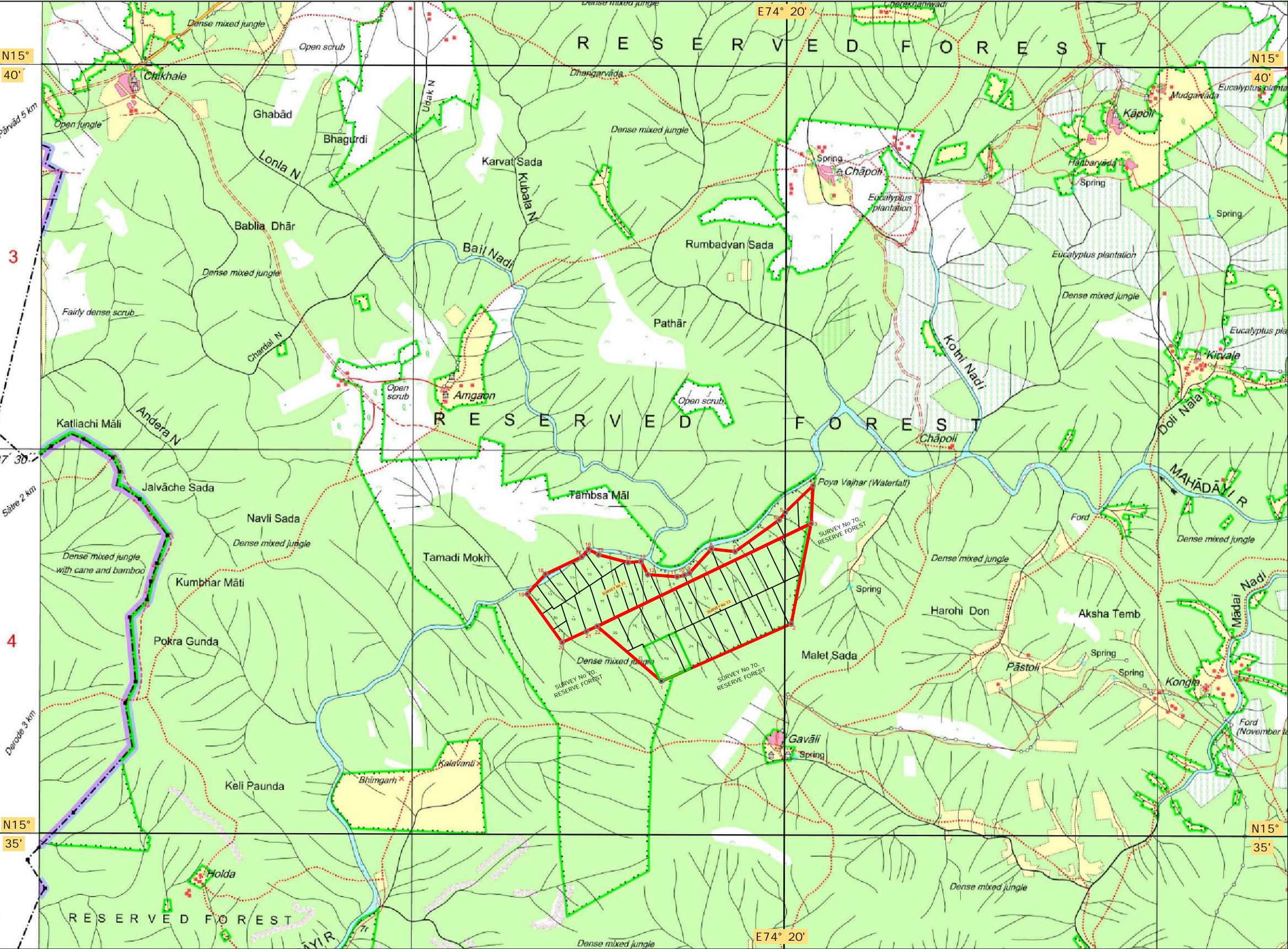
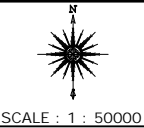


TOPO MAP SHOWING THE COMPENSATORY AFFORESTATION LAND OVER AN EXTENT OF 19.17 Ha IN RESPECT TO DOWNHILL PIPE CONVEYOR SYSTEM INCLUDES DHPC INFRASTRUCTURES, APPROACH ROAD, SERVICE ROAD, POWER TRANSMISSION LINES, WATER LINE, FIRE HYDRANT LINE AREA FROM NARASIMHA IRON ORE MINES OF M/S. MSPL LIMITED., (ERSTWHILE LESSEE SRI. H.G.RANGANGOUDA ML.NO.2148) TO PLANT AREA (SOMALAPURA VILLAGE) OF M/S. MSPL LIMITED, IN SM BLOCK FOREST, SANDUR SOUTH RANGE, SANDUR TALUK, BALLARI DIVISION, BALLARI DISTRICT KARNATAKA STATE CA LAND LOCATED AT PART OF SY.No.72 IN GAVALI VILLAGE,GUNJI HOBLI, KHANAPUR TALUK , BELAGAVI DISTRICT



GPS READINGS OF SURVEY No 71 & 72
OF GAVALI VILLAGE, KHANAPUR
TALUK

In DECIMAL. DEGREES		
POINT	LATITUDE	LONGITUDE
1	N15.60001	E74.31957
2	N15.60626	E74.33405
3	N15.61716	E74.33625
4	N15.62127	E74.33645
5	N15.61837	E74.33338
6	N15.61752	E74.33268
7	N15.61409	E74.32777
8	N15.61435	E74.32513
9	N15.61174	E74.32267
10	N15.61151	E74.32210
11	N15.61134	E74.32130
12	N15.61156	E74.31801
13	N15.61298	E74.31725
14	N15.61286	E74.31581
15	N15.61370	E74.31248
16	N15.61429	E74.31137
17	N15.61346	E74.31063
18	N15.61158	E74.30656
19	N15.60941	E74.30454
20	N15.60418	E74.30845
21	N15.60540	E74.31116
22	N15.60595	E74.31238

DATUM : WGS 84

GPS READINGS OF COMPENSATORY
AFFORESTATION LAND IN
RESPECT TO DOWNHILL PIPE CONVEYOR
SYSTEM OF M/s MSPL LIMITED

In DECIMAL. DEGREES		
POINT	LATITUDE	LONGITUDE
D1	N15.60001	E74.31957
D2	N15.60115	E74.32221
D3	N15.60147	E74.32294
D4	N15.60534	E74.32111
D5	N15.60502	E74.32039
D6	N15.60376	E74.31760
D7	N15.60014	E74.31940

DATUM : WGS 84

CA LAND AREA DETAILS FOR DOWNHILL CONVEYOR SYSTEM OF
M/s. MSPL LIMITED

VILLAGE: GAVALI, HOBLE: GUNJI, TALUK: KHANAPUR & DISTRICT:
BELAGAVI

SURVEY No	Acre	Area (Sqm)	Area (Ha)
72/18	37.453	151567	15.157
Part of 72/16	9.917	40133	4.013
Total	47.370	191700	19.170

INDEX

- BOUNDARY OF SURVEY No 71 & 72 OF
GAVALI VILLAGE, KHANAPUR TALUK
- COMPENSATORY AFFORESTATION LAND IN
RESPECT TO DOWNHILL CONVEYOR SYSTEM
OF M/s. MSPL LIMITED - 19.17 Ha

PART OF TOPO SHEET No D43C6

for MSPL LIMITED

K.MADHUSUDHANA
VP Mines & CC