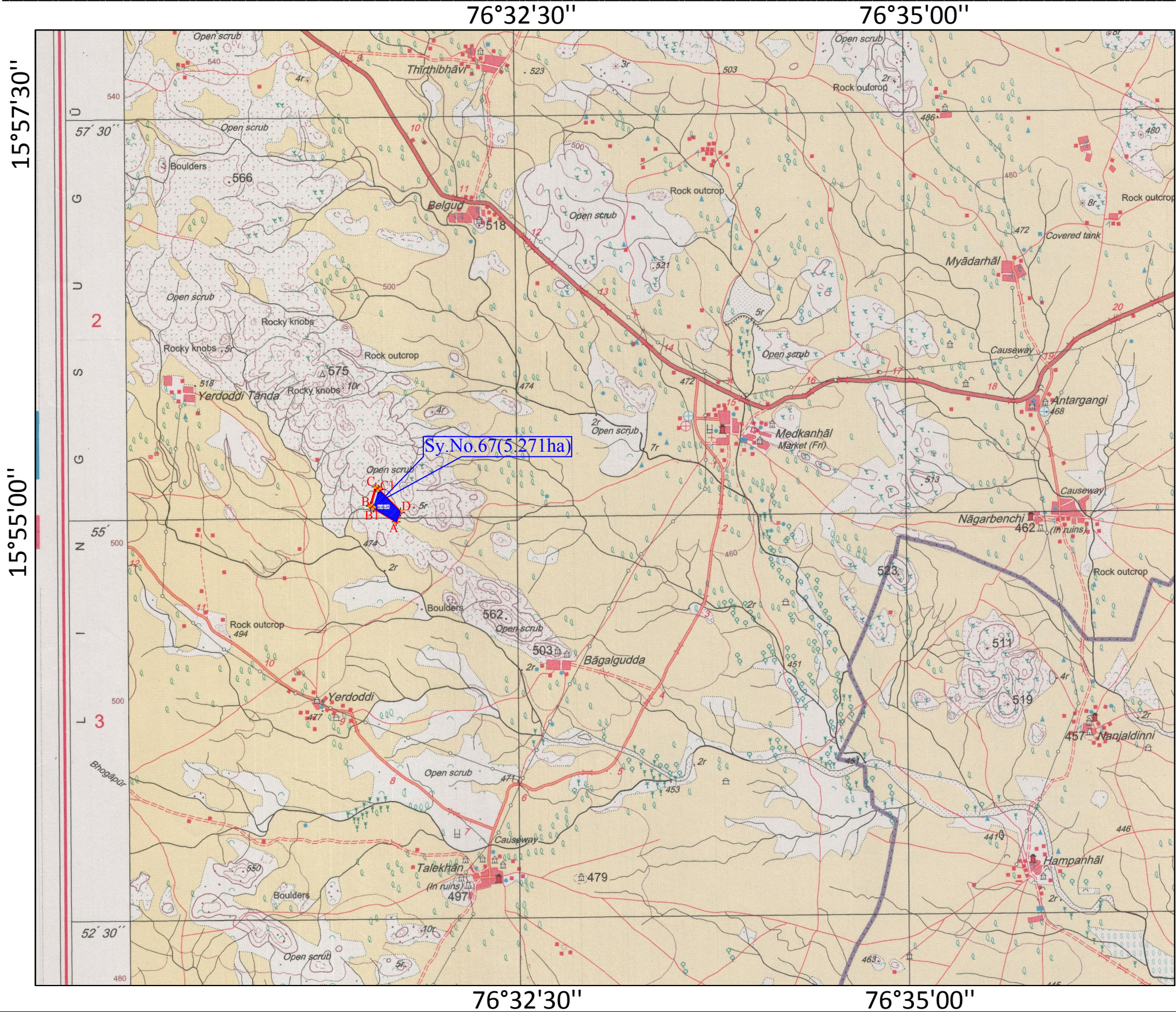
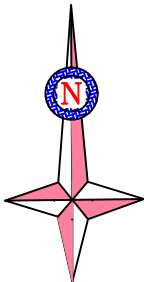


TOPO MAP SHOWING THE AREA IDENTIFIED AS A "COMPENSATORY AFORESTATION " (CA) LAND BY M/S JSW STEEL LTD., OVER AN EXTENT OF 5.271 HA(Sy.No.67) EARMARKED IN LIEU OF FC FOR "EXISTING / PROPOSED APPROACH ROAD,DOWNHILL CONVEYOR,SERVICE ROAD, TRANSMISSION & WATER PIPE LINE FOR DEVADARI IRON ORE MINE OF M/S JSW STEEL LTD (ERSTWHILE LESSEE VS LAD ML NO.2290) ."IN BAGGALGUDDA VILLAGE OF LINGASUGUR TALUK, RAICHUR DISTRICT.

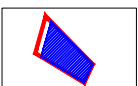


Topo -Sheet No. D43E9(57A/9)



SCALE - 1:50000R.F.

LEGEND



Area -5.271 ha. of Sy. No.67 earmarked as a CA land in lieu of FC for "existing / proposed approach road,downhill conveyor,service road, transmission & water pipe line for Devadari Iron Ore Mine of M/s JSW Steel Ltd (erstwhile lessee VS Lad ML No.2290) over an extent of 5.271 ha."



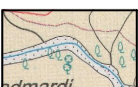
Corner points of Sy.No.67



Contour



Villages



Nalla (seasonal)



Road

"GPS CO ORDINATES OF AREA -5.271 HA.EARMARKED AS A CA LAND IN LIEU OF FC FOR "EXISTING / PROPOSED APPROACH ROAD,DOWNHILL CONVEYOR,SERVICE ROAD, TRANSMISSION & WATER PIPE LINE AREA FOR DEVADARI IRON ORE MINE OF M/s JSW STEEL LTD (ERSTWHILE LESSEE V.S.LAD ML NO.2290) OVER AN EXTENT OF 5.271 Ha."

DATUM -WGS 84 , ZONE 43P

DEGREES DECIMAL		Deg.Min.Sec.		Deg.Min.Sec.
Point ID	Latitude	Longitude	Latitude	Longitude
A	15.9164	76.5290	15° 54' 58.8"	76° 31' 44.2"
B1	15.9178	76.52650	15° 55' 04.2"	76°31' 35.4"
C1	15.9197	76.5271	15° 55' 11.0"	76° 31' 37.5"
D	15.9173	76.5294	15° 55' 02.4"	76° 31' 46.0"