

निर्यात के लिए नहीं NOT FOR EXPORT

OPEN SERIES MAP

No. F43P5

Scale 1:50,000

Dhār MADHYA PRADESH F43J4 (46N/4)	F43J8 (46N/8)	F43J12 (46N/12)
Barwāni MADHYA PRADESH F43P1 (46O/1)	F43P5 (46O/5)	Khargon West Nimār MADHYA PRADESH F43P9 (46O/9)
F43P2 (46O/2)	F43P6 (46O/6)	F43P10 (46O/10)

1 Dhule, MAHARASHTRA.

भारतीय सर्वेक्षण विभाग

SURVEY OF INDIA

1st Edition 2009.

Price : Rs. 50/-

CONVENTIONAL SYMBOLS

Express highway, with toll; with bridge, with distance stone.

Roads, metalled, according to importance.

Roads, double carriageway, according to importance.

Unmetalled road. Cart-track. Pack-track with pass. Foot-path.

Streams: with track in bed; underfined. Canal.

Dams: masonry or rock-filled, earthwork. Weir.

River, dry with water channel, with island & rocks. Tidal river.

Submerged rocks. Shoal. Swamp. Reeds.

Wells: lined, unlined. Tube-well. Spring. Tanks: perennial, dry.

Embankments: road or rail, tank. Broken ground.

Railways, broad gauge: double, single with station; under constn.

Railways, other gauges: double, single with distance stone; do.

Mineral line or tramway. Kln. Cutting with tunnel.

Contours with sub-features. Rocky slopes. Cliffs.

Sand features: (1) flat. (2) sand-hills(permanent). (3) dunes(shifting).

Towns or Villages: inhabited; deserted. Fort.

Huts: permanent, temporary. Tower. Antiquities.

Temples. Chhatra. Church. Mosque. Igah. Tomb. Graves.

Lighthouse. Lightship. Buoys: lighted; unlighted. Anchorage.

Mine. Vine on trellis. Grass. Scrub.

Palms: palmyra; other. Plantain. Conifer. Bamboo. Other trees.

Areas: cultivated; wooded. Surveyed tree.

Boundary, international.

state: demarcated; undemarcated.

district, subdivision; tahsil or taluk; forest.

Boundary pillars: surveyed; unlocated.

Heights, triangulated; station; point: approximate.

Bench-mark: geodetic; tertiary; canal.

Post office. Telegraph office. Overhead tank.

Rest house or inspection bungalow. Circuit house. Police station.

Camping ground. Forest: reserved; protected.

Spaced names: administrative; locality or tribal.

Hospital. Dispensary. Veterinary. Hospital / Dispensary.

Aerodrome. Helipad. Tourist site.

Power line: with pylons surveyed; with poles unsurveyed.

REFERENCE

NH-3 National Highway No. 3.

NOTES :-

Heights are in metres and above Indian mean sea level.

Contours are approximate.

A relative height, e.g., 3r, represents the approximate height, in metres, between the top and bottom of a steep slope.

The triangulated heights and contours in this sheet have not been adjusted to the heights of the spirit-levelled bench-marks and may not be strictly in accordance with them.

COMPILATION INDEX

A. Surveyed during 1977-78. Updated for major details during 2005-06.

Projection - UTM Datum - WGS 84

Magnetic Variation from True North about 1/2° West in 2005.
(Decreasing by about 1° annually).

500 m to 1 cm

1:50,000

2 cm to 1 km

Metres 1000 500 0 1 2 3 Kilometres

CONTOUR INTERVAL 20 METRES

For further details about this map, please contact

Director

Madhya Pradesh Geo-Spatial Data Centre

Survey of India

Survey Colony, Vijaynagar

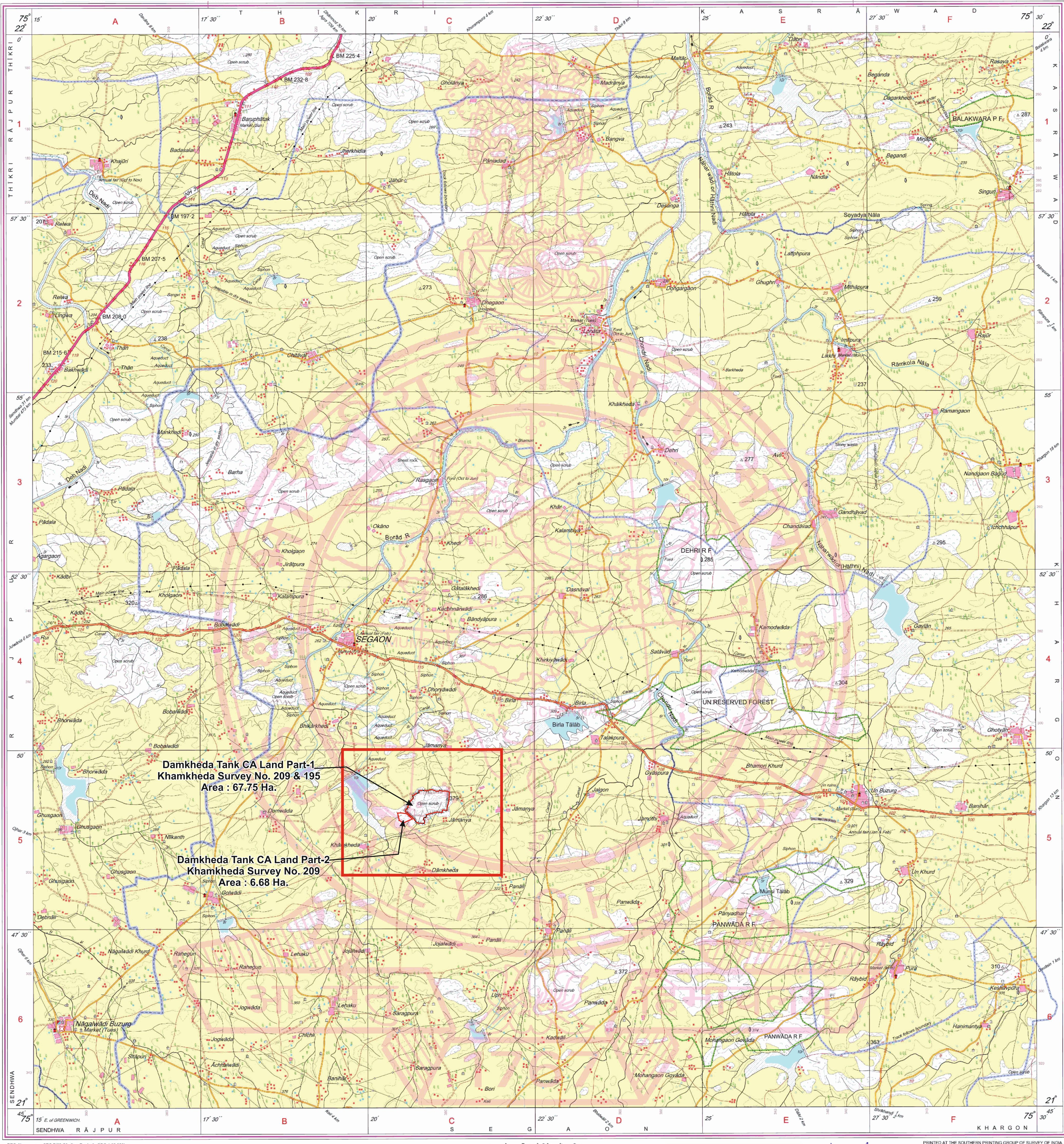
Jabalpur.

Fax : 0761 - 2644683

WEBSITE - www.surveyofindia.gov.in

Reproduction in whole or part by any means is prohibited without the written permission of Survey of India, the National Mapping Agency.

GOVERNMENT OF INDIA COPYRIGHT, 2009.



REG. No. PDF -SPG D105 (Madhya Pradesh GDC-1:50,000).

भारत के महामैपक के निदेशन से प्रकाशित,
Published under the direction of Surveyor General of India,
Survey of India, Haidibarkala Estate, Post Box No.37, Dehra Dun-248001 (Uttarakhand)
Department of Science & Technology, Government of India.

अनुभागीय अधिकारी
जल संसाधन उप संग्रह क.1
भीकनगोव

कार्यपालन यंत्री
जल संसाधन संग्रह
खरगोन

PRINTED AT THE SOUTHERN PRINTING GROUP OF SURVEY OF INDIA