



निर्यात के लिये नहीं NOT FOR EXPORT

OPEN SERIES
MAP

No. F45B10

Scale 1:50,000

F45B5 (73E/5)	F45B9 (73E/9)	F45B13 (73E/13)
F45B6 (73E/6)	F45B10 (73E/10) Jharkhand	Bokaro Jharkhand F45B14 (73E/14)
F45B7 (73E/7)	F45B11 (73E/11) Jharkhand	Purulia West Bengal F45B15 (73E/15)

1 Gridid, JHARKHAND.

भारतीय सर्वेक्षण विभाग

SURVEY OF INDIA

1st Edition 2010.

Price: Rs. 70/-

CONVENTIONAL SYMBOLS

Express highway with toll; with bridge with distance stone	20
Roads, metalled: according to importance	20
Roads, double carriageway: according to importance	20
Unmetalled road. Cart-track. Pack-track with pass. Foot-path	20
Sewers: with track in bed; undefined. Canal	20
Dams: masonry or rock-filled; earthen. Weir	20
River: dry with water channel with island & rocks. Tidal river	20
Submerged rocks. Shoal. Swamp. Reeds	20
Wells: lined; unlined. Tube-well. Spring. Tanks: perennial; dry	20
Embankments: road or rail; tank. Broken ground	20
Railways, broad gauge: double; single with station; under constr.	20
Railways, other gauges: double; single with station; under constr.	20
Mineral line or tramway. Kin. Cutting with tunnel	20
Contours with sub-features. Rocky slopes. Cliffs	20
Sand features: (littoral) (land-hills permanent). (dunes) (shifting)	20
Towns or Villages: inhabited; deserted. Fort	20
Huts: permanent; temporary. Tower. Antiquities	20
Temple. Chhatra. Church. Mosque. Idgah. Tomb. Graves	20
Lighthouse. Lightship. Buoy: lighted; unlighted. Anchorage	20
Mine. Vine on trails. Grass. Scrub	20
Palms; palms; other. Plantain. Coffee. Bamboo. Other trees	20
Artes: cultivated; wooded. Surveyed tree	20
Boundary, international	20
State: demarcated; undemarcated	20
district; subdivision; taluk or taluk; tehsil	20
Boundary pillars: surveyed; unlocated; village junction	20
Height: triangulated; station; point; approximate	20
Bench-mark: geodetic; tertiary; canal	20
Post office. Telegraph office. Overhead tank	20
Rest house or inspection bungalow. Circuit house. Police station	20
Camping ground. Forest: reserved; protected	20
Speed names: administrative; locality or tribal	20
Hospital. Dispensary. Veterinary: Hospital / Dispensary	20
Aerodrome. Helipad. Tourist site	20
Power line: with pylons surveyed; with poles unsurveyed	20
Proposed Final Route (Route-1)	20
Proposed Route-2 (Alternative Route)	20
Proposed Route-3 (Alternative Route)	20

REFERENCES

NH 33 National Highway No. 33. PWD Public Works Department.
SER South Eastern Railway. Chy. Chyway.

NOTES :-

Heights are in metres and above Indian mean sea level.
Contours are approximate.
A relative height, Δ , represents the approximate height, in metres, between the top and bottom of a steep slope.
The triangulated heights and contours in this sheet have not been adjusted to the heights of the spirit levelled bench - marks and may not be strictly in accordance with them.
The kilometre distance numbers along roads are shown in stant type, e.g. 5, whereas milestone numbers are shown in upright type, e.g. 5.
Forest boundaries north of the Damodar River have not been shown for want of reliable information.
The exterior boundaries of areas of Reserved or Protected Forests are shown by green ribbons.

COMPILATION INDEX

A. Surveyed during 1976-78. Updated for major details from satellite imagery of 2007 during 2008-09.

Projection - UTM Datum - WGS 84

Magnetic Variation from True North about $\frac{1}{4}$ West in 2005.
(Decreasing by about 1' annually).

1:50,000

500 m to 1 cm 2 cm to 1 km

CONTOUR INTERVAL 10 METRES

For further details about this map, please contact
Director

Jharkhand Geo-Spatial Data Centre

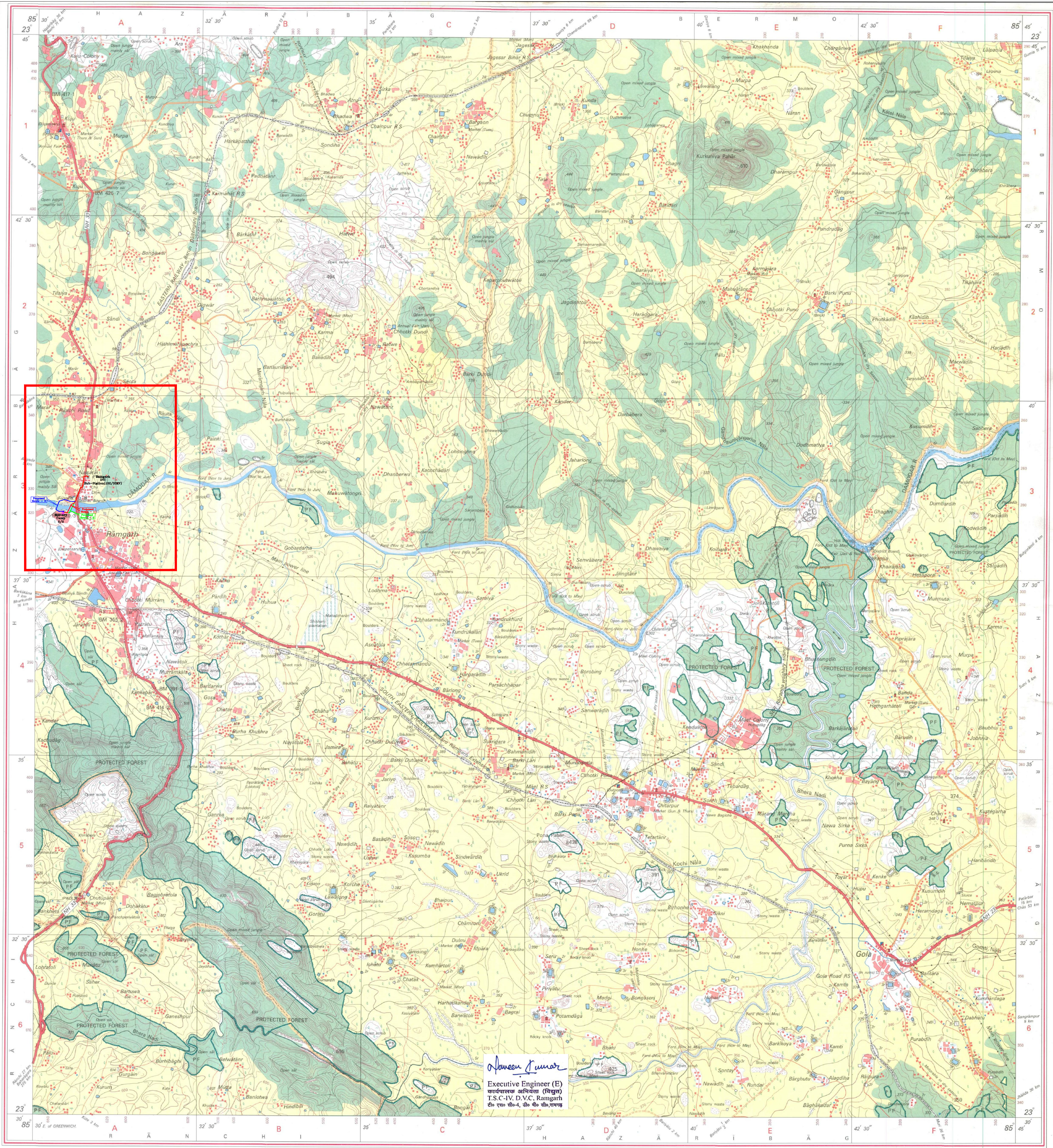
Survey of India, Doranda

Ranchi - 834002.

Fax : 0651 - 2482789

WEBSITE - www.surveyofindia.gov.in

Reproduction in whole or part by any means is prohibited



Signature

Executive Engineer (E)
कर्मचारी अभियंता (विगत)
T.S.-N.D.N.C. Ranchi
को एन डी न सी एन सी