


TOPO LOCATION MAP OF THE AREA SHOWN IN COLOR RED, SHOWING 50.0 HA. OF FOREST LAND FOR COMPENSATORY AFFORESTATION PURPOSE, IN DISTRICT - CHATRA, JHARKHAND.FOR NH-99 CHATRA BYPASS ROAD, CHATRA, JHARKHAND

 निर्यात के लिये नहीं NOT FOR EXPORT

OPEN SERIES MAP

No. G45T8

Scale 1:50,000

G45T3	G45T7	G45T11
G45T4	G45T8	G45T12
F45B1	F45B5	F45B9

1 Giridih, JHARKHAND.
2 Bokaro, JHARKHAND.

भारतीय सर्वेक्षण विभाग SURVEY OF INDIA

1st Edition 2009. Price : Rs. 50 /-

- CONVENTIONAL SYMBOLS**
- Express highway: with toll; with bridge; with distance stone
Roads, metalled: according to importance
Roads, double carriageway: according to importance
Unmetalled road, Cart-track, Pack-track with pass, Foot-path
Stream: with track in bed; unfordable. Canal
Ditch: masonry or rock-filled; earthenwork. Well
River: dry with water channel; with island & rocks. Tidal river
Submerged rocks. Shoal. Swamp. Reeds
Well: hand, vertical. Tube-well. Spring. Tank: perennial; dry
Enticement: road or rail; tank. River ground
Railways, broad gauge: double; single with station under canopy
Railways, other gauges: double; single with distance stone, etc.
Mineral line or tramway. Kin. Casing with tunnel
Contours with sub-features. Rocky slopes. Cliffs
Sand features: (Flat) (Dune) (Hill) (Spermatophyte) (Shrubland) (Forest)
Towns or Villages: inhabited; deserted. Fort
Hut: permanent; temporary. Tower. Aqueduct
Temple. Chhatra. Church. Mosque. Igloo. Tomb. Grave
Lighthouse. Lightship. Buoy: lighted; unlighted. Anchorage
Mine. Vine on trellis. Grass. Sand
Palms: palm; other. Plantain. Conifer. Bamboo. Other trees
Areas cultivated; wooded. Surveyed tree
Boundary: international
Water: dammed; undammed
ditch; substation; well or shaft; forest
Boundary pillars: surveyed; uncoloured; village inspection
Height: triangulated station; point; approximate
Spot height: geodetic; levelling; aneroid
Post office. Telegraph office. Overhead tank
Rail house or inspection bungalow. Circuit house. Police station
Camping ground. Forest: reserved; protected
Spent name: administrative; locality or tribal
Hospital. Dispensary. Veterinary hospital
Aerodrome. Helipad. Tourist site
Power line: with pylons surveyed; with poles unsurveyed

REFERENCES
NH 32 National Highway No. 32
PWD Public Works Department

NOTES
Heights are in metres and above Indian mean sea level.
Contours are approximate.
The kilometre scale numbers along roads and railroads are shown in solid type, e.g. 5, whereas milestone numbers are shown in upright type, e.g. 5.
A station height e.g. 80, marked along a canal indicates the height of the top of the canal embankment above the adjacent country.
Tanks, shown dry in this area, usually contain water from June to February.
Numerals with note throughout the sheet, only the important ones have been shown.
Unmetalled roads, in this sheet, appear which there is no descriptive remark, are generally unmetalled in dry season.
Cart-track along Lalla Lal Main Canal is jeepable in dry season. Permission to use this is required from the irrigation authorities.
The triangulated heights and contours in this sheet have not been adjusted to the heights of the epoch-levelled bench-marks and may not be strictly in accordance with them.

COMPILED INDEX
A. Compiled from 1:50,000 survey 1977-78. Updated for major details during 2004-05.

Projection - UTM Datum - WGS 84
Magnetic Variation from True North about 1° West in 2005. (Decreasing by about 1' annually).
Scale 1:50,000
1 cm to 1 km
2 cm to 1 km
3 km to 1 km
CONTOUR INTERVAL IN METRES
For further details about this map, please contact
Director
Jharkhand Geo-Spatial Data Centre
Survey of India, Dardas
Ranchi-834002
Fax : 0659-2482789

WEBSITE - www.surveyofindia.gov.in

Reproduction in whole or part by any means is prohibited without the written permission of Survey of India, the National Mapping Agency.

GOVERNMENT OF INDIA COPYRIGHT, 2008

LEGEND
C.A. LAND BOUNDARY



REG. No. B197-SFG D 09 (Jharkhand GDC-1:50,000-1015)

PRINTED AT THE SOUTHERN PRINTING GROUP OF SURVEY OF INDIA.

Surveyed & Drawn by
Checked by

Mukesh Kumar I.F.S.
Divisional Forest Officer
Chatra South Forest Division

TOPO LOCATION MAP OF THE AREA SHOWN IN COLOR RED, SHOWING 23.0 HA. OF FOREST LAND FOR COMPENSATORY AFFORESTATION PURPOSE, IN VILLAGE - KARMA, SHEET NO.-2, THANA NO.-252 AT ANCHAL-ITKHORI, DISTRICT - CHATRA, JHARKHAND. FOR NH-99 CHATRA BYPASS ROAD, CHATRA, JHARKHAND



OPEN SERIES
MAP

No. G45T4

Scale 1:50,000

G45S15 (72H/15)	G45T3 (72H/3)	G45T7 (72H/7)
G45S16 (72H/16)	G45T4 (72H/4)	G45T8 (72H/8)
F45A13 (73A/13)	F45B1 (73E/1)	F45B5 (73E/5)

भारतीय सर्वेक्षण विभाग

SURVEY OF INDIA

1st Edition 2008.

Price : Rs. 90 / -

CONVENTIONAL SYMBOLS

Express highway with toll; with bridge with distance stone	...
Roads, metalled according to importance	...
Roads, disused; camouflaged according to importance	...
Unmetalled road. Cam-track. Park-track with pass. Foot-path	...
Dam: masonry or rock-filled; earthwork. Wall	...
River: dry with water channel; with island & rocks. Tidal river	...
Canal: dry with water channel; with island & rocks. Tidal river	...
Water tank, well, spring, waterfall, spring, water, spring, water, spring	...
Telegraph line, telegraph, telegraph, telegraph, telegraph, telegraph	...
Power line, power line, power line, power line, power line, power line	...
...	...

REFERENCE

Notes :-
1. Heights are in metres and above Indian mean sea level.
2. Heights are approximate.
3. Relative height, 'R', represents the approximate height in metres between the top and bottom of a hill.
4. The area shown on this map is usually correct under water from July to February.
5. The area shown on this map is usually correct under water from July to February.
6. The area shown on this map is usually correct under water from July to February.
7. The area shown on this map is usually correct under water from July to February.
8. The area shown on this map is usually correct under water from July to February.
9. The area shown on this map is usually correct under water from July to February.
10. The area shown on this map is usually correct under water from July to February.

COMPILATION INDEX

A. Surveyed during 1977-78. Updated for major details during 2004-05.

Projection - UTM Datum - WGS 84

Magnetic Variation from True North about 1° West in 2005.

(Decreasing by about 1° annually).

Scale 1:50,000

500 m to 1 km

2 km to 1 km

CONTOUR INTERVAL 20 METRES

For further details about this map, please contact

Director

Jharkhand Geo-Spatial Data Centre

Survey of India, Ranchi

Ranchi-834002

Fax : 0661 - 2482789

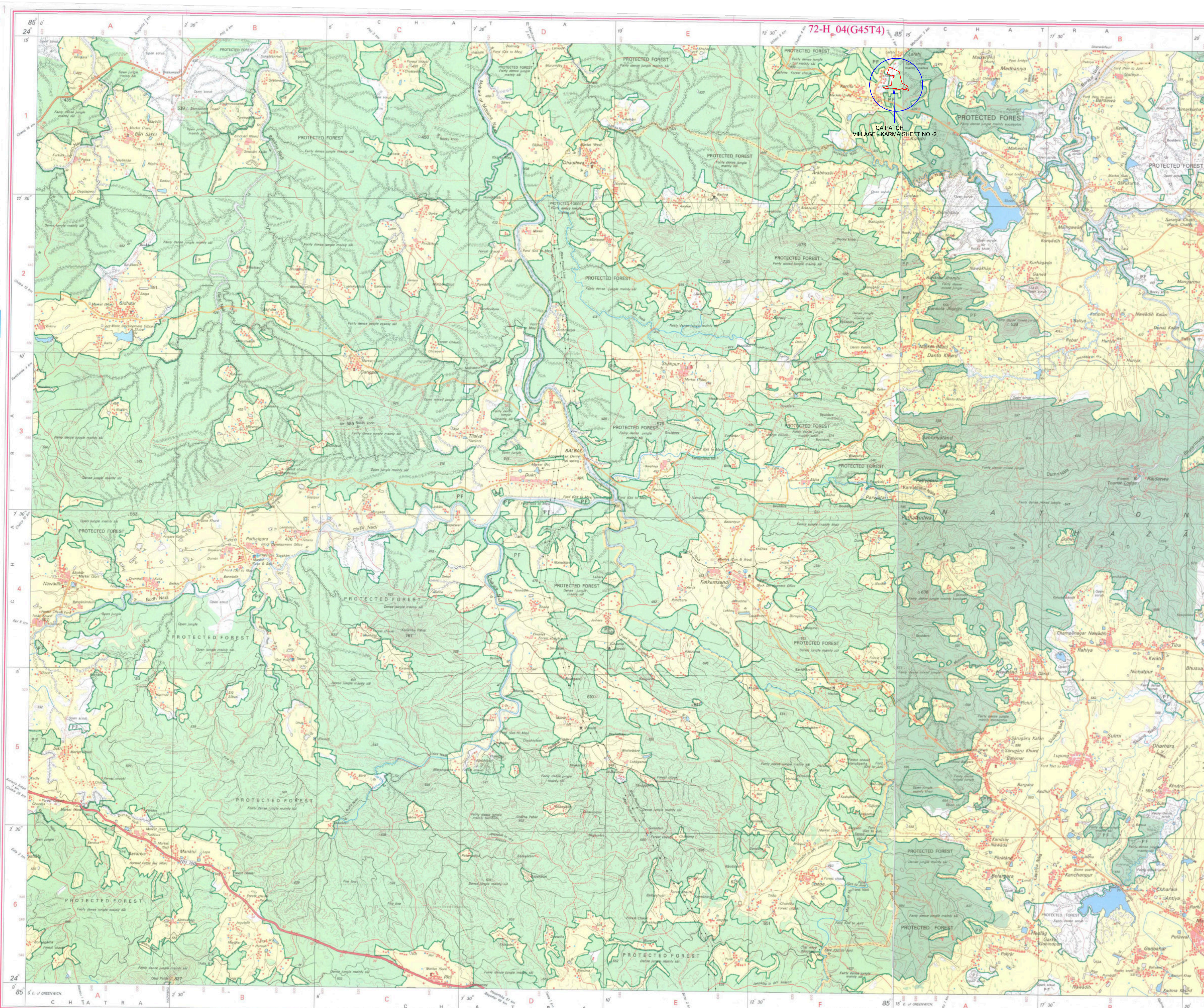
WEBSITE - www.surveyofindia.gov.in

Reproduction in whole or part by any means is prohibited

without the written permission of Survey of India, the

National Mapping Agency.

GOVERNMENT OF INDIA COPYRIGHT, 2005



LEGEND

C.A. LAND BOUNDARY

GOC-150,000-1015

Survey of India

Director

Jharkhand Geo-Spatial Data Centre

Survey of India, Ranchi

Ranchi-834002

Fax : 0661 - 2482789

WEBSITE - www.surveyofindia.gov.in

Reproduction in whole or part by any means is prohibited

without the written permission of Survey of India, the

National Mapping Agency.

GOVERNMENT OF INDIA COPYRIGHT, 2005

GOVERNMENT OF INDIA COPYRIGHT, 2005

GOVERNMENT OF INDIA COPYRIGHT, 2005

GOVERNMENT OF INDIA COPYRIGHT, 2005

GOVERNMENT OF INDIA COPYRIGHT, 2005

GOVERNMENT OF INDIA COPYRIGHT, 2005

GOVERNMENT OF INDIA COPYRIGHT, 2005

GOVERNMENT OF INDIA COPYRIGHT, 2005

GOVERNMENT OF INDIA COPYRIGHT, 2005

GOVERNMENT OF INDIA COPYRIGHT, 2005

GOVERNMENT OF INDIA COPYRIGHT, 2005

GOVERNMENT OF INDIA COPYRIGHT, 2005

GOVERNMENT OF INDIA COPYRIGHT, 2005

GOVERNMENT OF INDIA COPYRIGHT, 2005

GOVERNMENT OF INDIA COPYRIGHT, 2005

GOVERNMENT OF INDIA COPYRIGHT, 2005

GOVERNMENT OF INDIA COPYRIGHT, 2005

GOVERNMENT OF INDIA COPYRIGHT, 2005

GOVERNMENT OF INDIA COPYRIGHT, 2005

GOVERNMENT OF INDIA COPYRIGHT, 2005

GOVERNMENT OF INDIA COPYRIGHT, 2005

GOVERNMENT OF INDIA COPYRIGHT, 2005

GOVERNMENT OF INDIA COPYRIGHT, 2005

GOVERNMENT OF INDIA COPYRIGHT, 2005

GOVERNMENT OF INDIA COPYRIGHT, 2005

GOVERNMENT OF INDIA COPYRIGHT, 2005

GOVERNMENT OF INDIA COPYRIGHT, 2005

GOVERNMENT OF INDIA COPYRIGHT, 2005

GOVERNMENT OF INDIA COPYRIGHT, 2005

GOVERNMENT OF INDIA COPYRIGHT, 2005

GOVERNMENT OF INDIA COPYRIGHT, 2005

GOVERNMENT OF INDIA COPYRIGHT, 2005

GOVERNMENT OF INDIA COPYRIGHT, 2005

GOVERNMENT OF INDIA COPYRIGHT, 2005

GOVERNMENT OF INDIA COPYRIGHT, 2005

GOVERNMENT OF INDIA COPYRIGHT, 2005

GOVERNMENT OF INDIA COPYRIGHT, 2005

GOVERNMENT OF INDIA COPYRIGHT, 2005

GOVERNMENT OF INDIA COPYRIGHT, 2005

GOVERNMENT OF INDIA COPYRIGHT, 2005

GOVERNMENT OF INDIA COPYRIGHT, 2005

GOVERNMENT OF INDIA COPYRIGHT, 2005

GOVERNMENT OF INDIA COPYRIGHT, 2005

GOVERNMENT OF INDIA COPYRIGHT, 2005

GOVERNMENT OF INDIA COPYRIGHT, 2005

GOVERNMENT OF INDIA COPYRIGHT, 2005

GOVERNMENT OF INDIA COPYRIGHT, 2005

GOVERNMENT OF INDIA COPYRIGHT, 2005

GOVERNMENT OF INDIA COPYRIGHT, 2005

GOVERNMENT OF INDIA COPYRIGHT, 2005

GOVERNMENT OF INDIA COPYRIGHT, 2005

GOVERNMENT OF INDIA COPYRIGHT, 2005

GOVERNMENT OF INDIA COPYRIGHT, 2005

GOVERNMENT OF INDIA COPYRIGHT, 2005

GOVERNMENT OF INDIA COPYRIGHT, 2005

GOVERNMENT OF INDIA COPYRIGHT, 2005

GOVERNMENT OF INDIA COPYRIGHT, 2005

GOVERNMENT OF INDIA COPYRIGHT, 2005

GOVERNMENT OF INDIA COPYRIGHT, 2005

GOVERNMENT OF INDIA COPYRIGHT, 2005

GOVERNMENT OF INDIA COPYRIGHT, 2005

GOVERNMENT OF INDIA COPYRIGHT, 2005

GOVERNMENT OF INDIA COPYRIGHT, 2005

GOVERNMENT OF INDIA COPYRIGHT, 2005

GOVERNMENT OF INDIA COPYRIGHT, 2005

GOVERNMENT OF INDIA COPYRIGHT, 2005

GOVERNMENT OF INDIA COPYRIGHT, 2005

GOVERNMENT OF INDIA COPYRIGHT, 2005

GOVERNMENT OF INDIA COPYRIGHT, 2005

GOVERNMENT OF INDIA COPYRIGHT, 2005

GOVERNMENT OF INDIA COPYRIGHT, 2005

GOVERNMENT OF INDIA COPYRIGHT, 2005

GOVERNMENT OF INDIA COPYRIGHT, 2005

GOVERNMENT OF INDIA COPYRIGHT, 2005

GOVERNMENT OF INDIA COPYRIGHT, 2005

GOVERNMENT OF INDIA COPYRIGHT, 2005

GOVERNMENT OF INDIA COPYRIGHT, 2005

GOVERNMENT OF INDIA COPYRIGHT, 2005

GOVERNMENT OF INDIA COPYRIGHT, 2005

GOVERNMENT OF INDIA COPYRIGHT, 2005

GOVERNMENT OF INDIA COPYRIGHT, 2005

GOVERNMENT OF INDIA COPYRIGHT, 2005

GOVERNMENT OF INDIA COPYRIGHT, 2005

GOVERNMENT OF INDIA COPYRIGHT, 2005

GOVERNMENT OF INDIA COPYRIGHT, 2005

GOVERNMENT OF INDIA COPYRIGHT, 2005

GOVERNMENT OF INDIA COPYRIGHT, 2005

GOVERNMENT OF INDIA COPYRIGHT, 2005

GOVERNMENT OF INDIA COPYRIGHT, 2005

GOVERNMENT OF INDIA COPYRIGHT, 2005

GOVERNMENT OF INDIA COPYRIGHT, 2005

GOVERNMENT OF INDIA COPYRIGHT, 2005

GOVERNMENT OF INDIA COPYRIGHT, 2005

GOVERNMENT OF INDIA COPYRIGHT, 2005

GOVERNMENT OF INDIA COPYRIGHT, 2005

GOVERNMENT OF INDIA COPYRIGHT, 2005

GOVERNMENT OF INDIA COPYRIGHT, 2005

GOVERNMENT OF INDIA COPYRIGHT, 2005

GOVERNMENT OF INDIA COPYRIGHT, 2005

GOVERNMENT OF INDIA COPYRIGHT, 2005

GOVERNMENT OF INDIA COPYRIGHT, 2005

GOVERNMENT OF INDIA COPYRIGHT, 2005

GOVERNMENT OF INDIA COPYRIGHT, 2005

GOVERNMENT OF INDIA COPYRIGHT, 2005

GOVERNMENT OF INDIA COPYRIGHT, 2005

GOVERNMENT OF INDIA COPYRIGHT, 2005

GOVERNMENT OF INDIA COPYRIGHT, 2005

GOVERNMENT OF INDIA COPYRIGHT, 2005

GOVERNMENT OF INDIA COPYRIGHT, 2005

GOVERNMENT OF INDIA COPYRIGHT, 2005

GOVERNMENT OF INDIA COPYRIGHT, 2005

GOVERNMENT OF INDIA COPYRIGHT, 2005

GOVERNMENT OF INDIA COPYRIGHT, 2005

GOVERNMENT OF INDIA COPYRIGHT, 2005

GOVERNMENT OF INDIA COPYRIGHT, 2005

GOVERNMENT OF INDIA COPYRIGHT, 2005

GOVERNMENT OF INDIA COPYRIGHT, 2005

GOVERNMENT OF INDIA COPYRIGHT, 2005

GOVERNMENT OF INDIA COPYRIGHT, 2005

GOVERNMENT OF INDIA COPYRIGHT, 2005

GOVERNMENT OF INDIA COPYRIGHT, 2005

GOVERNMENT OF INDIA COPYRIGHT, 2005

GOVERNMENT OF INDIA COPYRIGHT, 2005

GOVERNMENT OF INDIA COPYRIGHT, 2005

GOVERNMENT OF INDIA COPYRIGHT, 2005

GOVERNMENT OF INDIA COPYRIGHT, 2005

GOVERNMENT OF INDIA COPYRIGHT, 2005

GOVERNMENT OF INDIA COPYRIGHT, 2005

GOVERNMENT OF INDIA COPYRIGHT, 2005

GOVERNMENT OF INDIA COPYRIGHT, 2005

GOVERNMENT OF INDIA COPYRIGHT, 2005

GOVERNMENT OF INDIA COPYRIGHT, 2005

GOVERNMENT OF INDIA COPYRIGHT, 2005

GOVERNMENT OF INDIA COPYRIGHT, 2005

GOVERNMENT OF INDIA COPYRIGHT, 2005

GOVERNMENT OF INDIA COPYRIGHT, 2005

GOVERNMENT OF INDIA COPYRIGHT, 2005

GOVERNMENT OF INDIA COPYRIGHT, 2005

GOVERNMENT OF INDIA COPYRIGHT, 2005

GOVERNMENT OF INDIA COPYRIGHT, 2005

GOVERNMENT OF INDIA COPYRIGHT, 2005

GOVERNMENT OF INDIA COPYRIGHT, 2005

GOVERNMENT OF INDIA COPYRIGHT, 2005

GOVERNMENT OF INDIA COPYRIGHT, 2005

GOVERNMENT OF INDIA COPYRIGHT, 2005

GOVERNMENT OF INDIA COPYRIGHT, 2005

GOVERNMENT OF INDIA COPYRIGHT, 2005

GOVERNMENT OF INDIA COPYRIGHT, 2005

GOVERNMENT OF INDIA COPYRIGHT, 2005

GOVERNMENT OF INDIA COPYRIGHT, 2005

GOVERNMENT OF INDIA COPYRIGHT, 2005

GOVERNMENT OF INDIA COPYRIGHT, 2005

GOVERNMENT OF INDIA COPYRIGHT, 2005

GOVERNMENT OF INDIA COPYRIGHT, 2005

GOVERNMENT OF INDIA COPYRIGHT, 2005

GOVERNMENT OF INDIA COPYRIGHT, 2005

GOVERNMENT OF INDIA COPYRIGHT, 2005

GOVERNMENT OF INDIA COPYRIGHT, 2005

GOVERNMENT OF INDIA COPYRIGHT, 2005

GOVERNMENT OF INDIA COPYRIGHT, 2005

GOVERNMENT OF INDIA COPYRIGHT, 2005

GOVERNMENT OF INDIA COPYRIGHT, 2005

GOVERNMENT OF INDIA COPYRIGHT, 2005

GOVERNMENT OF INDIA COPYRIGHT, 2005

GOVERNMENT OF INDIA COPYRIGHT, 2005

GOVERNMENT OF INDIA COPYRIGHT, 2005

GOVERNMENT OF INDIA COPYRIGHT, 2005

GOVERNMENT OF INDIA COPYRIGHT, 2005

GOVERNMENT OF INDIA COPYRIGHT, 2005

GOVERNMENT OF INDIA COPYRIGHT, 2005

GOVERNMENT OF INDIA COPYRIGHT, 2005

GOVERNMENT OF INDIA COPYRIGHT, 2005

GOVERNMENT OF INDIA COPYRIGHT, 2005

GOVERNMENT OF INDIA COPYRIGHT, 2005

GOVERNMENT OF INDIA COPYRIGHT, 2005

GOVERNMENT OF INDIA COPYRIGHT, 2005

GOVERNMENT OF INDIA COPYRIGHT, 2005

GOVERNMENT OF INDIA COPYRIGHT, 2005

GOVERNMENT OF INDIA COPYRIGHT, 2005

GOVERNMENT OF INDIA COPYRIGHT, 2005

GOVERNMENT OF INDIA COPYRIGHT, 2005

GOVERNMENT OF INDIA COPYRIGHT, 2005

GOVERNMENT OF INDIA COPYRIGHT, 2005

GOVERNMENT OF INDIA COPYRIGHT, 2005

GOVERNMENT OF INDIA COPYRIGHT, 2005

GOVERNMENT OF INDIA COPYRIGHT, 2005

GOVERNMENT OF INDIA COPYRIGHT, 2005

GOVERNMENT OF INDIA COPYRIGHT, 2005

GOVERNMENT OF INDIA COPYRIGHT, 2005

GOVERNMENT OF INDIA COPYRIGHT, 2005

GOVERNMENT OF INDIA COPYRIGHT, 2005

GOVERNMENT OF INDIA COPYRIGHT, 2005

GOVERNMENT OF INDIA COPYRIGHT, 2005

GOVERNMENT OF INDIA COPYRIGHT, 2005

GOVERNMENT OF INDIA COPYRIGHT, 2005

GOVERNMENT OF INDIA COPYRIGHT, 2005

GOVERNMENT OF INDIA COPYRIGHT, 2005

GOVERNMENT OF INDIA COPYRIGHT, 2005

GOVERNMENT OF INDIA COPYRIGHT, 2005

GOVERNMENT OF INDIA COPYRIGHT, 2005

Ranjit Kumar Barwal
Ranjit Kumar Barwal
Executive Engineer,
Public Health Engineering Department, Haryana

Ranjit Kumar Barnwal
Executive Engineer,
National Highway Division, Huzib