

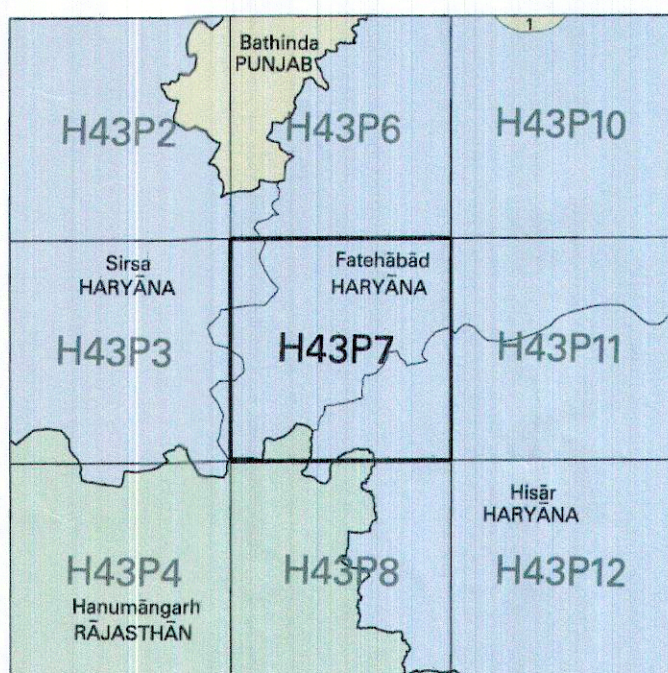


NOT FOR EXPORT

OPEN SERIES
MAP

No. H43P7

Scale 1:50,000



1 Mansa, PUNJAB.

भारतीय सर्वेक्षण विभाग

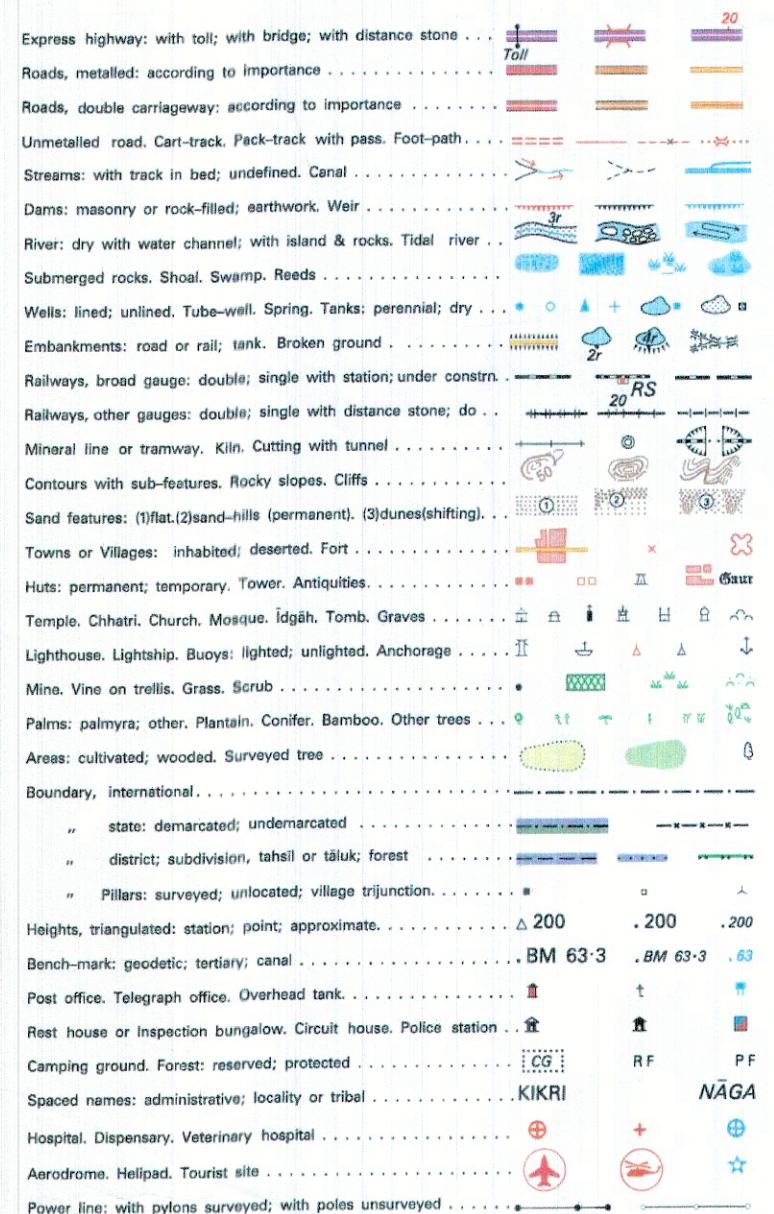
SURVEY OF INDIA

1st Edition 2007.

Price Rs. 50/-

IS 280

CONVENTIONAL SYMBOLS



REFERENCE

NH-10 National Highway No. 10

NOTES

Heights are in metres and above Indian mean sea level.
Contours are approximate.
A relative height e.g. 35, represents the approximate height in metres between the top and bottom of a steep slope.
Tanks shown dry, in this area usually contain water from July to December.
Canal distance stones are 1,000 feet apart and every existing fifth stone is shown.
Tube-wells are numerous throughout the sheet, only the important ones have been shown.
Unmetalled roads and cart-tracks in this sheet are generally motorable in dry season. Permission to use those along canals is required from the Irrigation authorities.
3,000 acre reclamation scheme, of Bhakra Dam Project Surveys with their numbers are shown as tertiary bench marks thus: S 12 61 BM 202.6

COMPILATION INDEX

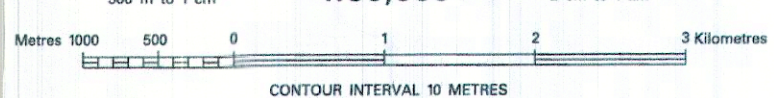
A. Surveyed during 1985-86. Updated for major details during 2004-05.



Projection - UTM Datum - WGS 84

Magnetic Variation from True North about 3° East in 2000.
(Increasing by about 2' annually).

1:50,000



CONTOUR INTERVAL 10 METRES

For further details about this map, please contact

Director

Haryana Geo-Spatial Data Centre

Survey of India, Sector 32 A

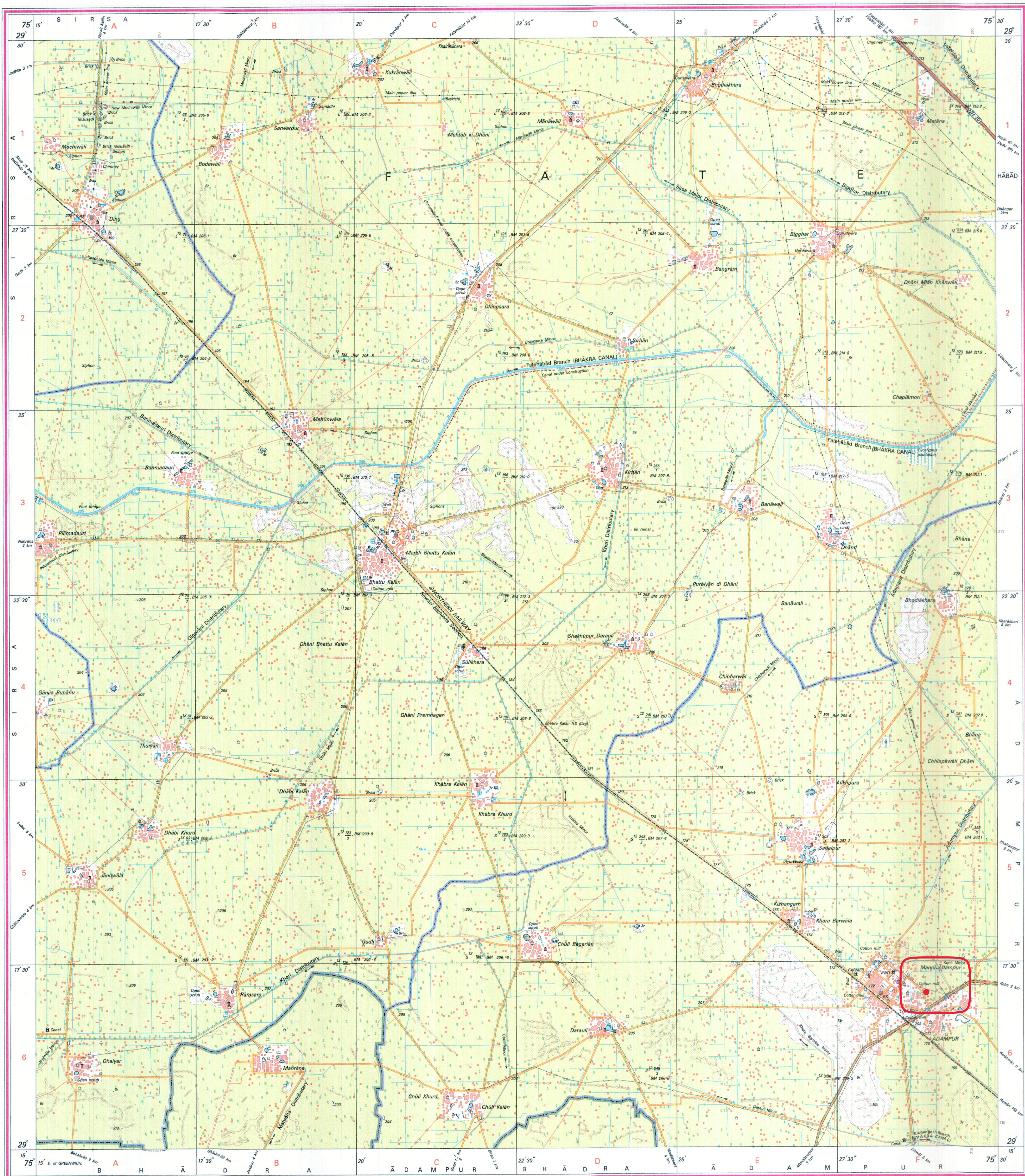
Chandigarh.

Fax : 0172 - 2604671

WEBSITE - www.surveyofindia.gov.in

Reproduction in whole or part by any means is prohibited
without the written permission of Survey of India, the
National Mapping Agency.

GOVERNMENT OF INDIA COPYRIGHT, 2007.



REG. No. -WPS D 97 (Haryana GDC-1:50,000)

भारत के महामहोदय नेजर जनरल एम. गोपाल राव, बी.टेक., पी.जी. डिप्लोमा (एरियल फोटो), एम.एडमिनिस्ट्रेशन, एम.सी.एडमिनिस्ट्रेशन, के निवेशन में प्रकाशित,
Published under the direction of Major General M. Gopal Rao, B.Tech., P.G.Dip. (Aerial Photo), MME, MCA, FIS, Surveyor General of India,
Survey of India, Hathi Barkala Estate, Post Box No. 37, Dehra Dun - 248001 (Uttarakhand)
Department of Science & Technology, Government of India.

PRINTED AT THE WESTERN PRINTING GROUP OF SURVEY OF INDIA