

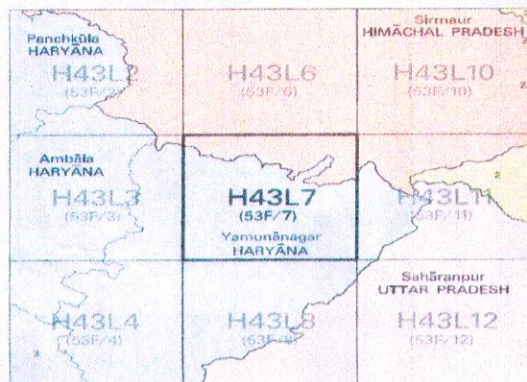


निर्गत के लिए नहीं NOT FOR EXPORT

OPEN SERIES MAP

No. H43L7

Scale 1:50,000



1 Solan, HIMACHAL PRADESH,
2 Dehra Dun, UTTARAKHAND,
3 Kurukshetra, HARYANA.

भारतीय सर्वेक्षण विभाग

SURVEY OF INDIA

1st Edition 2009

Price : Rs. 50/-

CONVENTIONAL SYMBOLS

Table of conventional symbols for various features like roads, railways, rivers, and buildings.

REFERENCE

MS 72 National Highway No. 73

NOTES

Contours are approximate. Heights are in metres and above Indian mean sea level. Contour intervals are 1000 feet and above...

COMPILATION INDEX

Table with 2 columns: A, B. A: Compiled from 1:25,000 survey, 1995-96. Updated for major change during 2004-05. B: ...

Projection - UTM Datum - WGS 84

Magnetic Variation from True North about 1° East in 2009, increasing by about 1' annually.

1:50,000

Scale bar showing 0 to 2 km.

CONTOUR INTERVAL 10.00 METRES

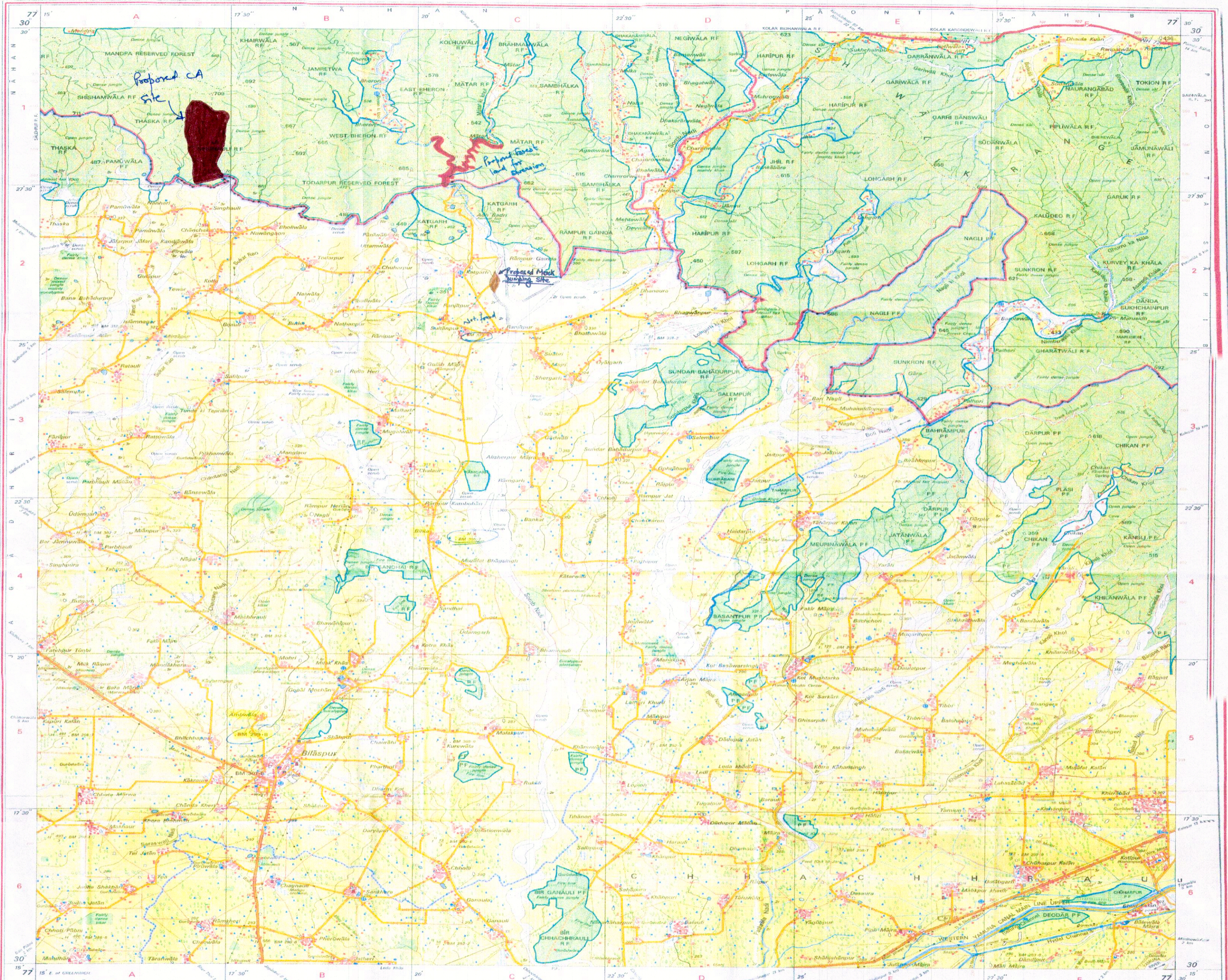
For further details about this series please contact Director, Himachal Pradesh Geo-Spatial Data Centre, Survey of India, Sector 32 A, Chandigarh.

Fax : 0172-2613396

WEBSITE - www.surveyofindia.gov.in

Reproduction in whole or part by any means is prohibited without the written permission of Survey of India, the National Mapping Agency.

GOVERNMENT OF INDIA COPYRIGHT, 2009



Published under the direction of Surveyor General of India, Survey of India, Hattibarkala Estate, Post Box No. 37, Dehra Dun - 248001 (Uttarakhand), Department of Science & Technology, Government of India.

Sub-Divisional Officer, Saranwati Heritage Sub-Division No. 2, Jagadhri

Executive Engineer, Saranwati Heritage Division No. 1, Jagadhri

Signature and stamp of the Survey of India official.